

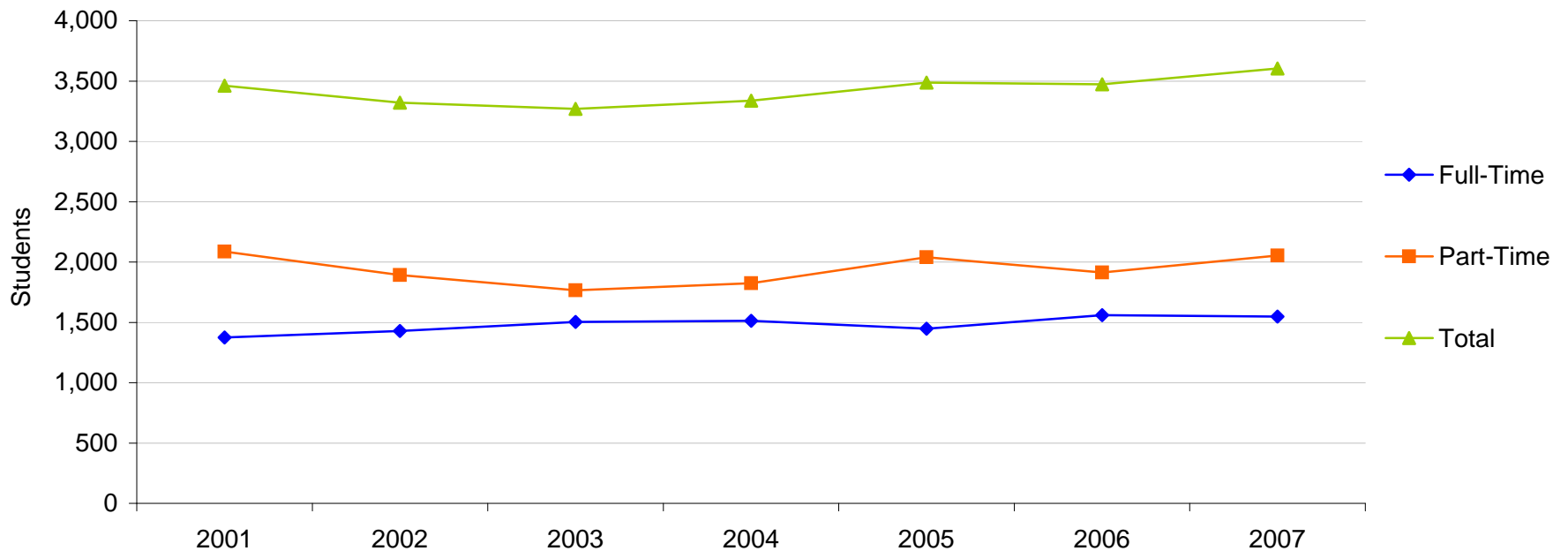
1.1 Fall 2007 Student Characteristics

	Freshmen	Sophomore	Other	Dual Credit/ Dual Enrolled	Dual Tech Credit	Total	% of Total
Total	1,811	779	238	420	356	3,604	100.0%
Gender							
Male	671	262	75	177	254	1,439	39.9%
Female	1,140	517	163	243	102	2,165	60.1%
Enrollment Status							
Full-Time	1,056	418	55	6	14	1,549	43.0%
Part-Time	755	361	183	414	342	2,055	57.0%
Developmental Courses							
1 course	506	79	8	0	0	593	16.5%
2 courses	153	4	1	0	0	158	4.4%
3+ courses	79	2	0	0	0	81	2.2%
Location							
In-District	1,081	543	179	301	178	2,282	63.3%
Out-of-District	720	235	59	119	178	1,311	36.4%
Out-of-State	6	0	0	0	0	6	0.2%
International	3	1	0	0	0	4	0.1%
Unknown	1	0	0	0	0	1	0.0%
Age							
< 18	91	0	0	356	263	710	19.7%
18-19	836	150	3	62	47	1,098	30.5%
20-21	251	222	30	0	5	508	14.1%
22-24	140	93	40	1	4	278	7.7%
25-29	140	105	50	0	11	306	8.5%
30-34	89	59	31	0	9	188	5.2%
35-39	70	56	21	1	6	154	4.3%
40-49	122	73	39	0	6	240	6.7%
50-64	36	19	19	0	5	79	2.2%
65 and older	34	2	5	0	0	41	1.1%
Unknown	2	0	0	0	0	2	0.1%
Race/Ethnicity							
American Indian/Alaska Native	9	3	0	0	3	15	0.4%
Asian/Pacific Islander	16	4	0	1	0	21	0.6%
Black, non-Hispanic	20	10	1	3	2	36	1.0%
Hispanic	31	7	3	6	3	50	1.4%
Nonresident Alien	0	0	0	0	0	0	0.0%
Race/Ethnicity Unknown	102	46	4	20	53	225	6.2%
White, non-Hispanic	1,633	709	230	390	295	3,257	90.4%

Source: Colleague Fall Census

1.2 Fall Credit Enrollment By Enrollment Status

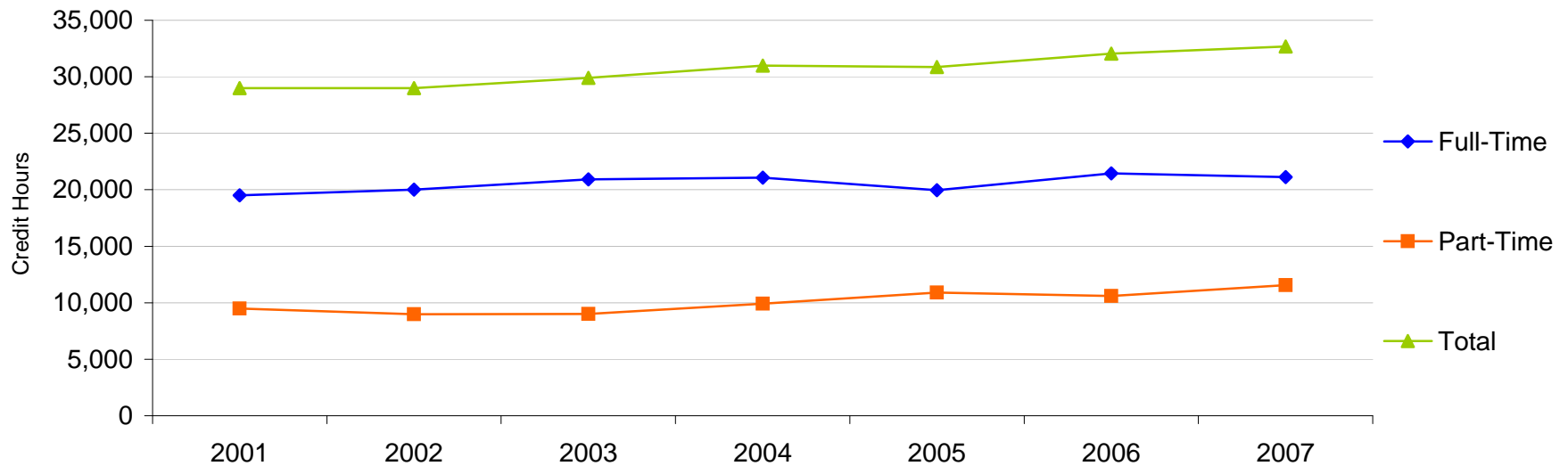
	2001	2002	2003	2004	2005	2006	2007	% Change	
								2001-2007	2006-2007
Total	3,462	3,320	3,269	3,337	3,486	3,474	3,604	4.1%	3.7%
Headcount									
Full-Time	1,375	1,428	1,503	1,512	1,447	1,560	1,549	12.7%	-0.7%
Part-Time	2,087	1,892	1,766	1,825	2,039	1,914	2,055	-1.5%	7.4%
Percentages									
Full-Time	39.7%	43.0%	46.0%	45.3%	41.5%	44.9%	43.0%		
Part-Time	60.3%	57.0%	54.0%	54.7%	58.5%	55.1%	57.0%		



Source: IPEDS

1.3 Fall Credit Hours

	2001	2002	2003	2004	2005	2006	2007	% Change	
								2001-2007	2006-2007
Total	28,989	28,993	29,912	30,989	30,861	32,046	32,677	12.7%	2.0%
Credit Hours									
Full-Time	19,512	20,011	20,911	21,083	19,950	21,437	21,109	8.2%	-1.5%
Part-Time	9,477	8,982	9,001	9,906	10,911	10,609	11,568	22.1%	9.0%
Percentages									
Full-Time	67.3%	69.0%	69.9%	68.0%	64.6%	66.9%	64.6%		
Part-Time	32.7%	31.0%	30.1%	32.0%	35.4%	33.1%	35.4%		



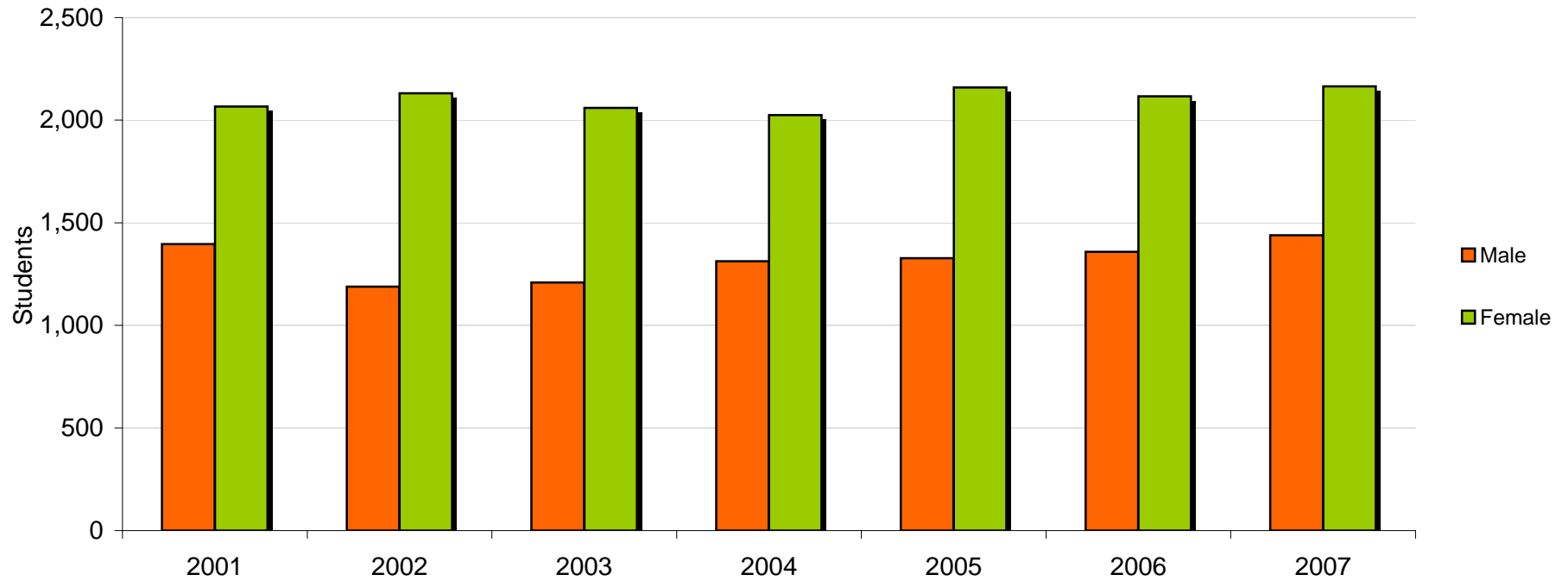
1.4 Fall Full-Time Equivalent (FTE) Enrollment

	2001	2002	2003	2004	2005	2006	2007	% Change	
								2001-2007	2006-2007
FTE Enrollment	1,932	1,934	1,994	2,066	2,057	2,136	2,178	12.7%	2.0%

Source: DHE02, Supplement to the IPEDS EF and EMSAS

1.5 Fall Credit Enrollment By Gender

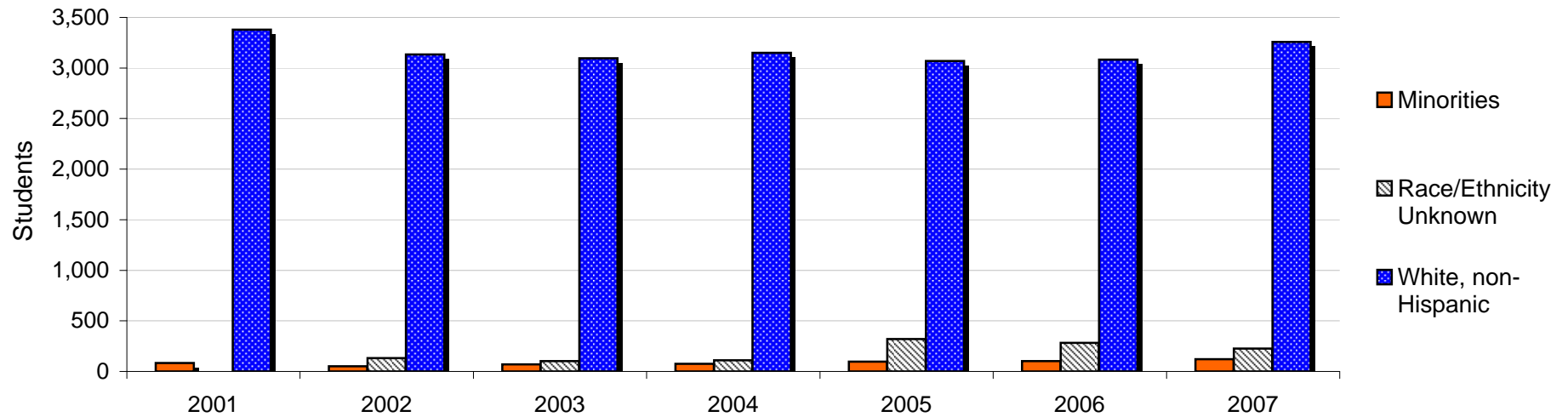
	2001	2002	2003	2004	2005	2006	2007	% Change	
								2001-2007	2006-2007
Total	3,462	3,320	3,269	3,337	3,486	3,474	3,604	4.1%	3.7%
Headcount									
Male	1,396	1,189	1,209	1,312	1,327	1,358	1,439	3.1%	6.0%
Female	2,066	2,131	2,060	2,025	2,159	2,116	2,165	4.8%	2.3%
Percentages									
Male	40.3%	35.8%	37.0%	39.3%	38.1%	39.1%	39.9%		
Female	59.7%	64.2%	63.0%	60.7%	61.9%	60.9%	60.1%		



Source: IPEDS

1.6 Fall Credit Enrollment By Ethnicity

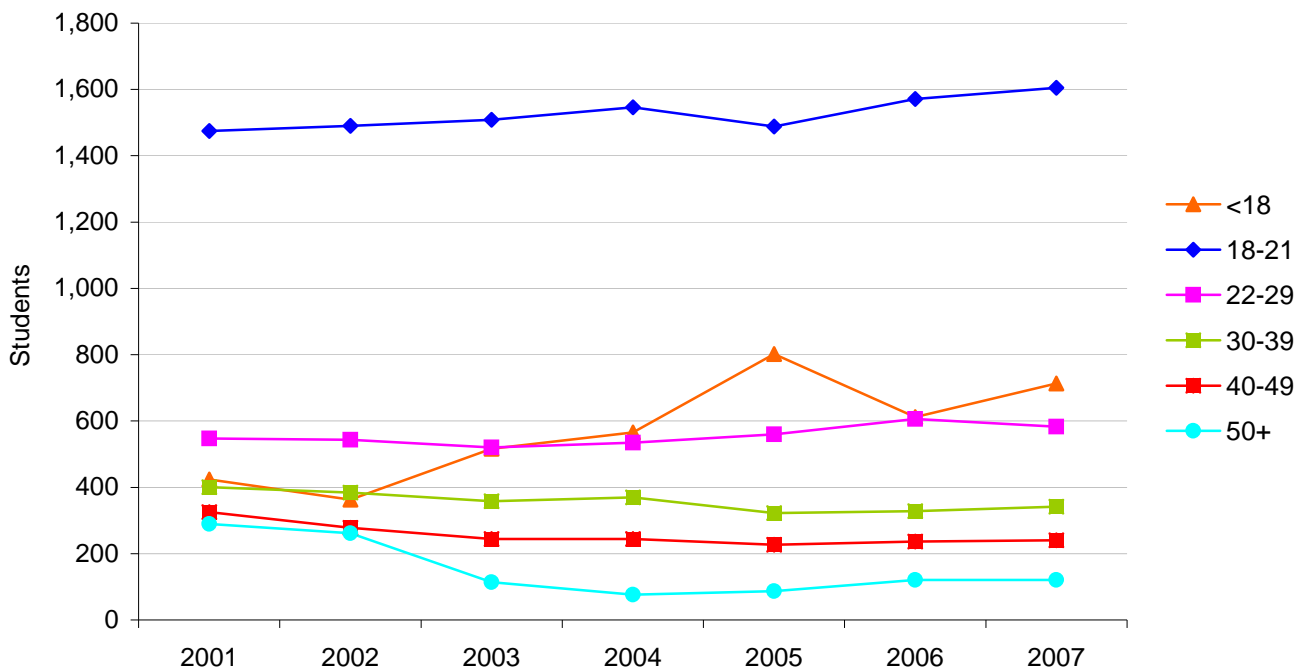
	2001	2002	2003	2004	2005	2006	2007	% Change	
								2001-2007	2006-2007
Total	3,462	3,320	3,269	3,337	3,486	3,474	3,604	4.1%	3.7%
Race/Ethnicity									
American Indian/Alaska Native	13	5	5	10	14	13	15	15.4%	15.4%
Asian/Pacific Islander	21	10	20	22	27	24	21	0.0%	-12.5%
Black, non-Hispanic	32	18	20	18	21	26	36	12.5%	38.5%
Hispanic	18	19	24	26	35	40	50	177.8%	25.0%
Nonresident Alien	0	0	1	1	1	5	0	0.0%	-100.0%
Race/Ethnicity Unknown	0	133	102	110	320	283	225	na	-20.5%
White, non-Hispanic	3,378	3,135	3,097	3,150	3,068	3,083	3,257	-3.6%	5.6%
Percentages									
American Indian/Alaska Native	0.4%	0.2%	0.2%	0.3%	0.4%	0.4%	0.4%		
Asian/Pacific Islander	0.6%	0.3%	0.6%	0.7%	0.8%	0.7%	0.6%		
Black, non-Hispanic	0.9%	0.5%	0.6%	0.5%	0.6%	0.7%	1.0%		
Hispanic	0.5%	0.6%	0.7%	0.8%	1.0%	1.2%	1.4%		
Nonresident Alien	0.0%	0.0%	0.0%	0.0%	0.0%	0.1%	0.0%		
Race/Ethnicity Unknown	0.0%	4.0%	3.1%	3.3%	9.2%	8.1%	6.2%		
White, non-Hispanic	97.6%	94.4%	94.7%	94.4%	88.0%	88.7%	90.4%		



Source: IPEDS

1.7 Fall Credit Enrollment by Age

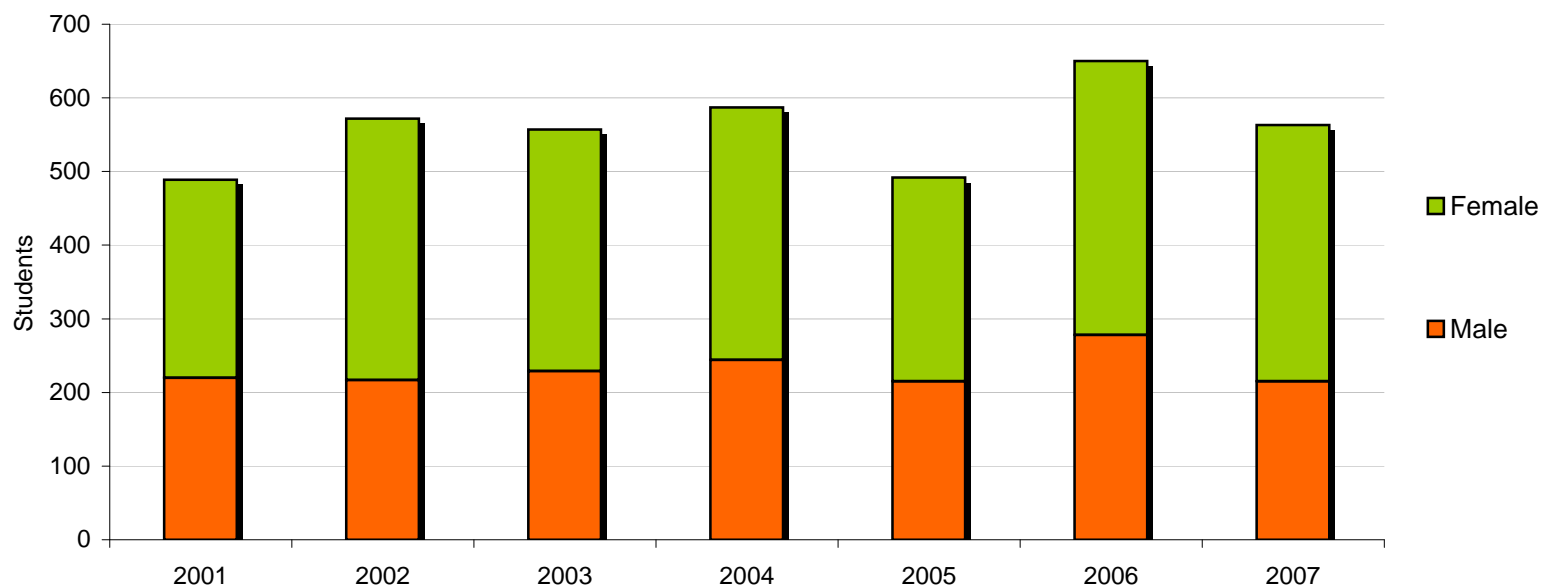
	2001	2002	2003	2004	2005	2006	2007	% Change	
								2001-2007	2006-2007
Total	3,462	3,320	3,269	3,337	3,486	3,474	3,604	4.1%	3.4%
Age Category									
<18	424	363	516	566	802	612	713	68.2%	16.5%
18-19	966	1,001	1,006	1,052	1,019	1,078	1,098	13.7%	1.9%
20-21	509	489	503	494	469	493	507	-0.4%	2.8%
22-24	265	281	274	293	301	306	278	4.9%	-9.2%
25-29	282	262	246	242	259	300	305	8.2%	1.7%
30-34	203	188	182	211	187	186	188	-7.4%	1.1%
35-39	198	196	176	159	135	142	154	-22.2%	8.5%
40-49	325	278	244	244	227	236	240	-26.2%	1.7%
50-64	142	111	70	56	65	83	79	-44.4%	-4.8%
65 and older	148	151	44	20	22	38	42	-71.6%	10.5%
Unknown	0	0	8	0	0	0	0	na	na
Percentages									
<18	12.2%	10.9%	15.8%	17.0%	23.0%	17.6%	19.8%		
18-19	27.9%	30.2%	30.8%	31.5%	29.2%	31.0%	30.5%		
20-21	14.7%	14.7%	15.4%	14.8%	13.5%	14.2%	14.1%		
22-24	7.7%	8.5%	8.4%	8.8%	8.6%	8.8%	7.7%		
25-29	8.1%	7.9%	7.5%	7.3%	7.4%	8.6%	8.5%		
30-34	5.9%	5.7%	5.6%	6.3%	5.4%	5.4%	5.2%		
35-39	5.7%	5.9%	5.4%	4.8%	3.9%	4.1%	4.3%		
40-49	9.4%	8.4%	7.5%	7.3%	6.5%	6.8%	6.7%		
50-64	4.1%	3.3%	2.1%	1.7%	1.9%	2.4%	2.2%		
65 and older	4.3%	4.5%	1.3%	0.6%	0.6%	1.1%	1.2%		
Unknown	0.0%	0.0%	0.2%	0.0%	0.0%	0.0%	0.0%		



Source: IPEDS

1.8 Fall Credit Enrollment By Full-Time, First-Time, Degree/Certificate-Seeking Students

	2001	2002	2003	2004	2005	2006	2007	% Change	
								2001-2007	2006-2007
Total*	489	572	557	587	492	650	563	15.1%	-13.4%
Headcount									
Male	220	217	229	244	215	278	215	-2.3%	-22.7%
Female	269	355	328	343	277	372	348	29.4%	-6.5%
Percentages									
Male	45.0%	37.9%	41.1%	41.6%	43.7%	42.8%	38.2%		
Female	55.0%	62.1%	58.9%	58.4%	56.3%	57.2%	61.8%		

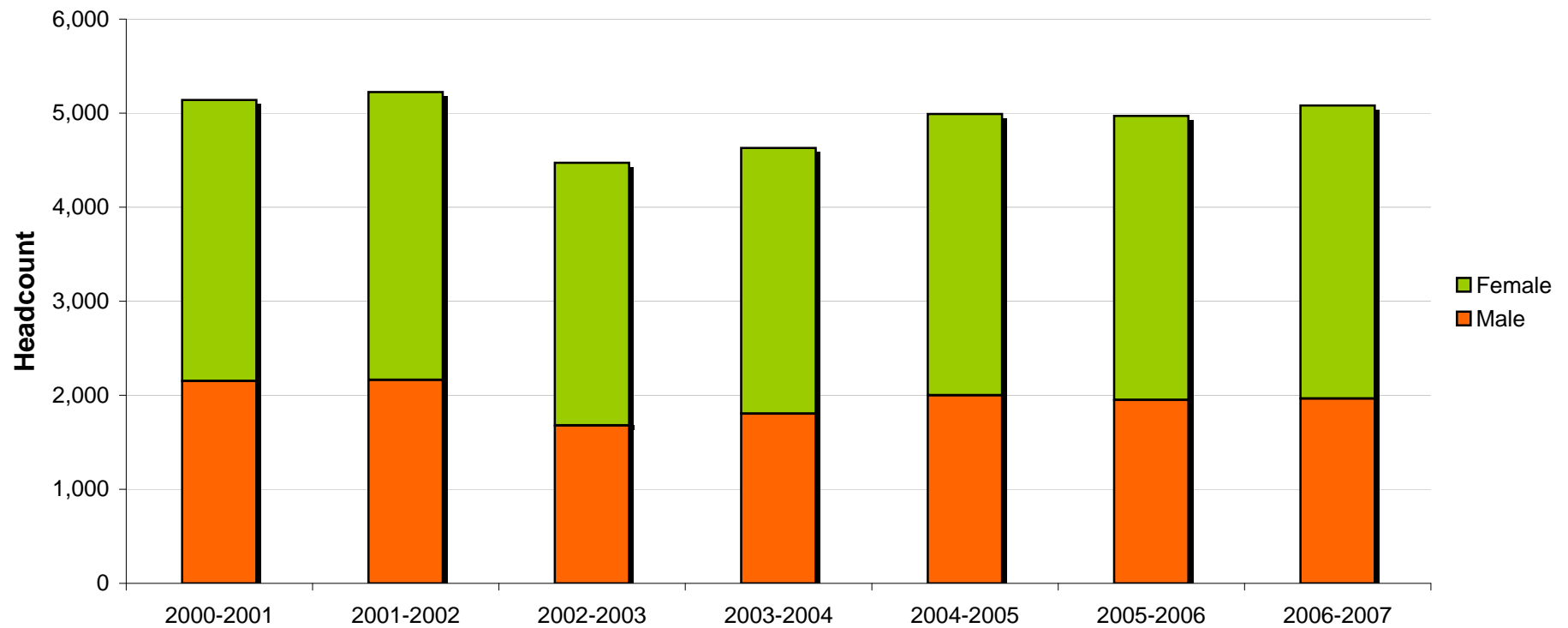


Source: IPEDS

* Represents the IPEDS Graduation Rate Survey cohort

1.9 Twelve-Month* Unduplicated Headcount

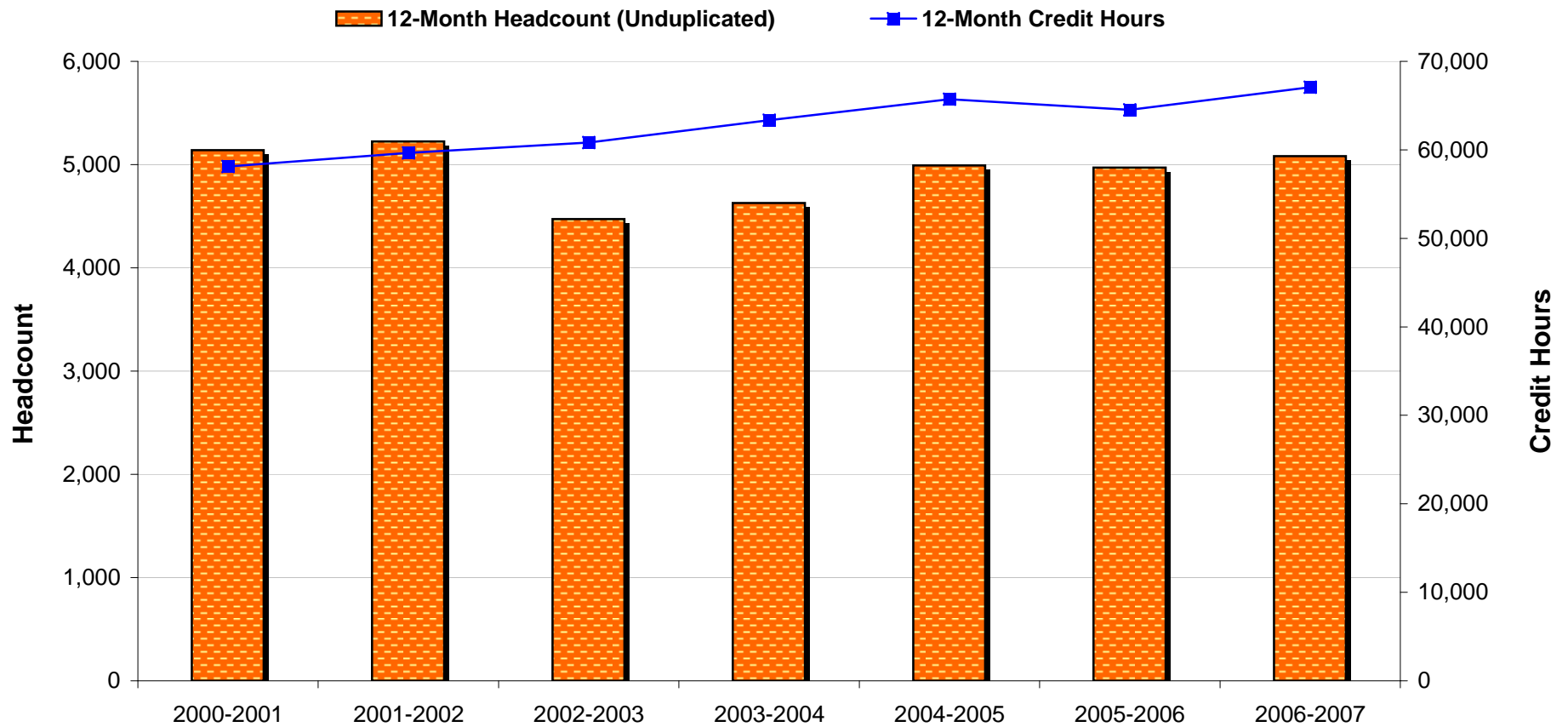
	2000-2001	2001-2002	2002-2003	2003-2004	2004-2005	2005-2006	2006-2007	% Change	
								2000-2001 to 2006-2007	2005-2006 to 2006-2007
Total	5,140	5,225	4,473	4,629	4,992	4,971	5,083	-1.1%	2.3%
Headcount									
Male	2,151	2,163	1,680	1,805	1,999	1,951	1,966	-8.6%	0.8%
Female	2,989	3,062	2,793	2,824	2,993	3,020	3,117	4.3%	3.2%



Source: IPEDS
* July 1 - June 30

1.10 Twelve-Month* Credit Hours & Full-Time Equivalent (FTE) Enrollment

								% Change	
	2000-2001	2001-2002	2002-2003	2003-2004	2004-2005	2005-2006	2006-2007	2000-2001 to 2006-2007	2005-2006 to 2006-2007
Credit Hours	58,104	59,658	60,831	63,347	65,715	64,532	67,072	15.4%	3.9%
FTE	1,937	1,989	2,028	2,112	2,191	2,151	2,236	15.4%	4.0%



Source: IPEDS

* July 1 - June 30

Note: FTE for twelve-month instructional activity = twelve-month credit hours/30

1.11 Fall 2007 Students by Zip Code*



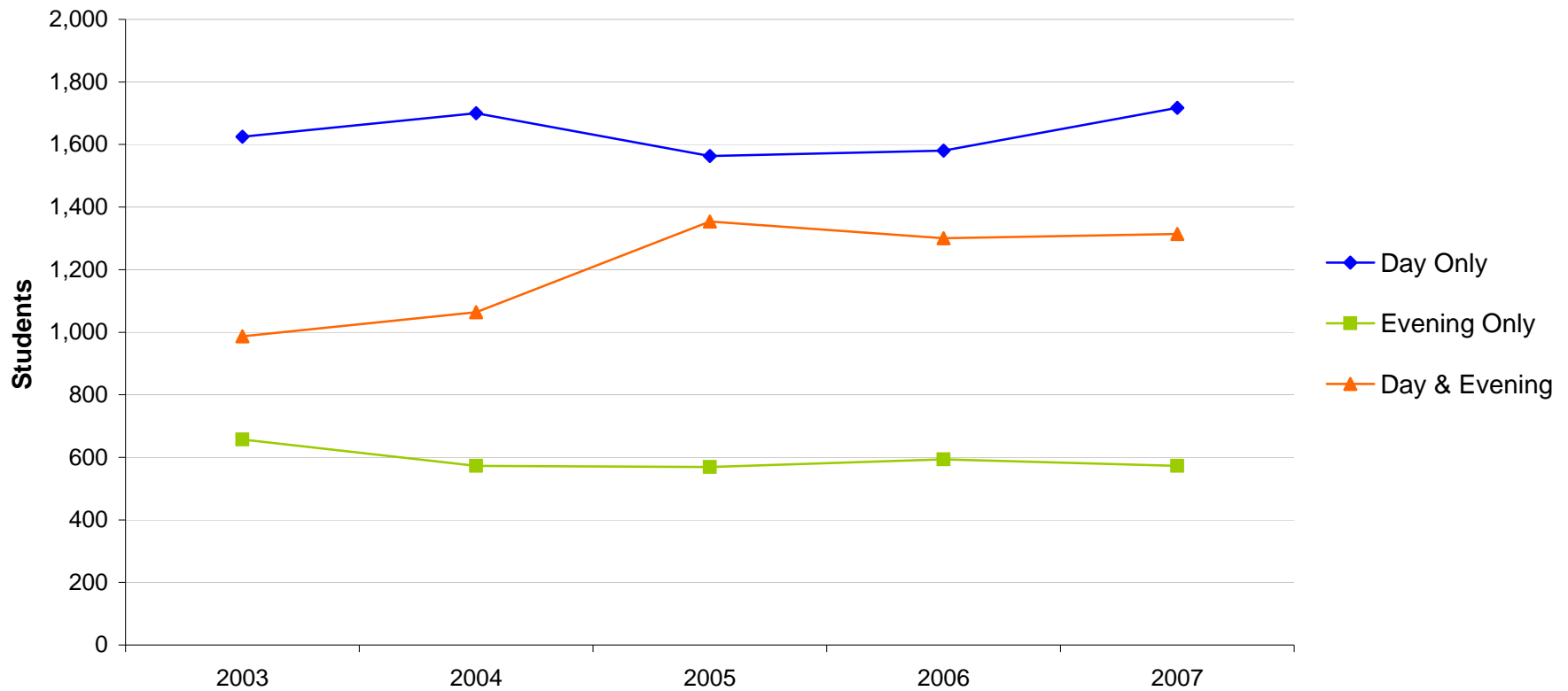
	Zip Area	Headcount	% of Total Students
1.	Washington	647	18.0%
2.	Union	488	13.5%
3.	Rolla **	296	8.2%
4.	Sullivan	278	7.7%
5.	St. Clair	254	7.0%
6.	Owensville **	122	3.4%
7.	Villa Ridge	107	3.0%
8.	Bourbon	105	2.9%
9.	New Haven	105	2.9%
10.	Marthasville	104	2.9%

*Top 10 contributing zip codes shown

**Not shown on map

1.12 Fall Enrollment by Day & Evening Students

						% Change	
	2003	2004	2005	2006	2007	2003-2007	2006-2007
Total	3,269	3,337	3,486	3,474	3,604	10.2%	3.7%
Day Only	1,625	1,700	1,563	1,580	1,717	5.7%	8.7%
Evening Only	657	573	569	594	573	-12.8%	-3.5%
Day & Evening	987	1,064	1,354	1,300	1,314	33.1%	1.1%



Source: Colleague