

10.1 Fall Continuing Education Student Characteristics

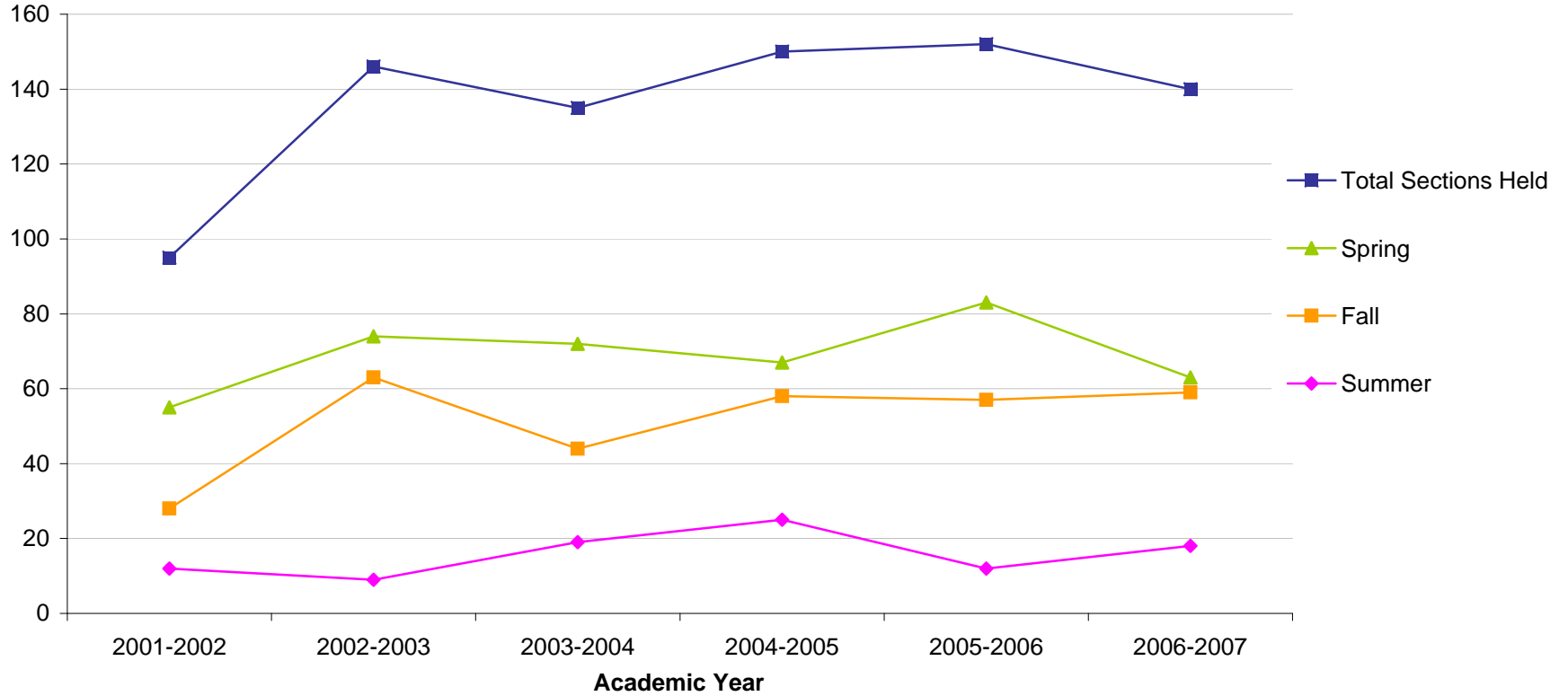
	Fall 2002	Fall 2003	Fall 2004	Fall 2005	Fall 2006	Fall 2007
Total	404	378	262	372	282	357
Gender						
Male	154	115	95	131	104	108
Female	250	263	167	241	178	249
Enrollment Status						
Full-Time	0	0	0	0	0	0
Part-Time	404	378	262	372	282	357
Location						
In-District	283	275	184	298	204	270
Out-of-District	120	102	77	72	77	86
Out-of-State	1	0	0	2	0	0
International	0	0	0	0	0	0
Other	0	1	1	0	1	1
Age						
< 18	24	30	21	29	64	75
18-19	7	7	2	4	2	8
20-21	5	21	8	10	8	5
22-24	15	15	5	17	8	4
25-29	25	14	12	16	13	12
30-34	22	15	8	18	8	16
35-39	35	17	13	18	11	15
40-49	78	78	44	69	53	62
50-64	74	69	58	112	71	99
65 and older	71	59	46	74	34	47
Unknown	48	53	45	5	10	14
Race/Ethnicity						
American Indian/Alaska Native	0	0	0	0	1	0
Asian/Pacific Islander	0	1	0	0	0	1
Black, non-Hispanic	0	0	0	1	1	0
Hispanic	0	2	0	0	0	1
Nonresident Alien	0	0	0	0	0	0
Race/Ethnicity Unknown	145	123	106	155	126	197
White, non-Hispanic	259	252	156	216	154	158

Source: Colleague

Note: Data are based on end of fall term continuing education students.

10.2 Continuing Education Sections by Term

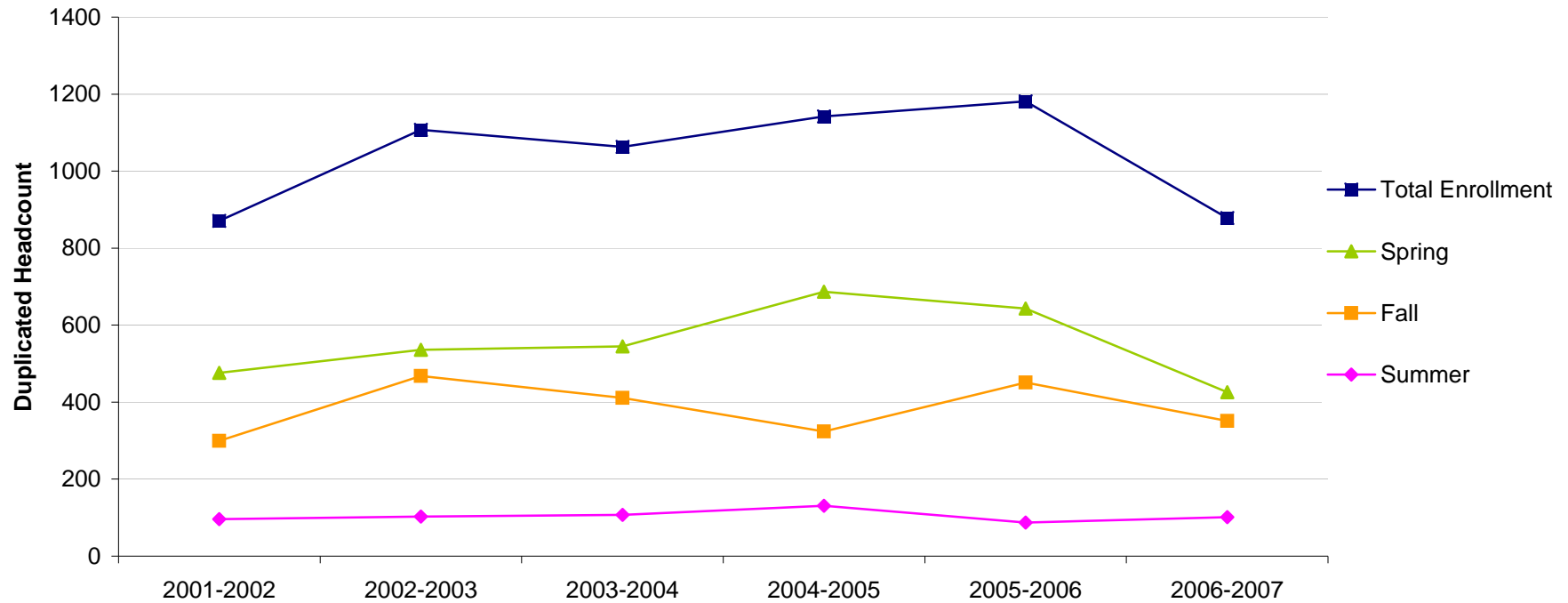
							% Change	
	2001-2002	2002-2003	2003-2004	2004-2005	2005-2006	2006-2007	2001-2002 to 2006-2007	2005-2006 to 2006-2007
Total Sections Held	95	146	135	150	152	140	47.4%	-7.9%
Summer	12	9	19	25	12	18	50.0%	50.0%
Fall	28	63	44	58	57	59	110.7%	3.5%
Spring	55	74	72	67	83	63	14.5%	-24.1%



Source: Colleague (end of term data)

10.3 Continuing Education Enrollment

							% Change	
	2001-2002	2002-2003	2003-2004	2004-2005	2005-2006	2006-2007	2001-2002 to 2006-2007	2005-2006 to 2006-2007
Total Enrollment (duplicated)	871	1107	1063	1142	1181	878	0.8%	-25.7%
Summer	96	103	107	131	87	101	5.2%	16.1%
Fall	299	468	411	324	451	351	17.4%	-22.2%
Spring	476	536	545	687	643	426	-10.5%	-33.7%
Total Students (unduplicated)	721	941	848	819	872	660	-8.5%	-24.3%
Summer	79	102	100	120	85	96	21.5%	12.9%
Fall	271	404	378	262	372	282	4.1%	-24.2%
Spring	417	472	449	545	512	365	-12.5%	-28.7%



Source: Colleague (end of term data)