
Main Campus

4.1 Fall 2007 Main Campus Student Characteristics

	Freshmen	Sophomore	Other	Total	% of Total
Total	1,286	606	185	2,077	100.0%
Gender					
Male	486	206	58	750	36.1%
Female	800	400	127	1,327	63.9%
Enrollment Status					
Full-Time	876	365	47	1,288	62.0%
Part-Time	410	241	138	789	38.0%
Developmental Courses					
1 Course	308	48	3	359	17.3%
2 Courses	171	10	1	182	8.8%
3+ Courses	134	2	0	136	6.5%
Location					
In-District	936	479	148	1,563	75.3%
Out-of-District	341	125	37	503	24.2%
Out-of-State	5	0	0	5	0.2%
International	3	1	0	4	0.2%
Other	1	1	0	2	0.1%
Age					
<18	43	0	0	43	2.1%
18-19	648	132	3	783	37.7%
20-21	191	188	28	407	19.6%
22-24	92	67	33	192	9.2%
25-29	79	81	35	195	9.4%
30-34	61	34	25	120	5.8%
35-39	39	39	16	94	4.5%
40-49	77	46	29	152	7.3%
50-64	25	17	11	53	2.6%
65 and older	30	2	5	37	1.8%
Unknown	1	0	0	1	0.0%
Race/Ethnicity					
American Indian/Alaska Native	3	1	0	4	0.2%
Asian/Pacific Islander	10	4	0	14	0.7%
Black, non-Hispanic	11	8	1	20	1.0%
Hispanic	22	6	3	31	1.5%
Nonresident Alien	0	0	0	0	0.0%
Race/Ethnicity Unknown	76	42	3	121	5.8%
White, non-Hispanic	1,164	545	178	1,887	90.9%

Source: Colleague Census Data

Notes:

(1)Includes students enrolled in any credit bearing course located on the Main Campus (includes Main Campus ITV)

(2)Developmental coursework is for any ECC campus

4.2 Main Campus Headcount, Credit Hours & FTE by Academic Year

AY 2006-2007

	06/SU	06/FA	07/SP	AY Totals	
Headcount	717	2,130	2,012	Headcount (duplicated)	4,859
Credit Hours	2,993.50	20,348.50	19,111.00	Headcount (unduplicated)	2,897
FTE	499	1,357	1,274	Credit Hours	42,453.00
				Annual FTE	1,415

AY 2005-2006

	05/SU	05/FA	06/SP	AY Totals	
Headcount	773	2,036	1,900	Headcount (duplicated)	4,709
Credit Hours	3,230.50	19,937.00	18,285.50	Headcount (unduplicated)	2,825
FTE	538	1,329	1,219	Credit Hours	41,453.00
				Annual FTE	1,382

AY 2004-2005

	04/SU	04/FA	05/SP	AY Totals	
Headcount	721	2,085	1,920	Headcount (duplicated)	4,726
Credit Hours	3,085.50	21,075.00	18,822.50	Headcount (unduplicated)	2,814
FTE	514	1,405	1,255	Credit Hours	42,983.00
				Annual FTE	1,433

AY 2003-2004

	03/SU	03/FA	04/SP	AY Totals	
Headcount	780	2,094	1,943	Headcount (duplicated)	4,817
Credit Hours	3,216.50	20,868.00	19,134.50	Headcount (unduplicated)	2,893
FTE	536	1,391	1,276	Credit Hours	43,219.00
				Annual FTE	1,441

AY 2002-2003

	02/SU	02/FA	03/SP	AY Totals	
Headcount	856	2,204	1,944	Headcount (duplicated)	5,004
Credit Hours	3,705.00	21,769.50	19,154.00	Headcount (unduplicated)	3,057
FTE	618	1,451	1,277	Credit Hours	44,628.50
				Annual FTE	1,488

AY 2001-2002

	01/SU	01/FA	02/SP	AY Totals	
Headcount	769	2,287	2,046	Headcount (duplicated)	5,102
Credit Hours	3,431.00	22,101.00	19,460.50	Headcount (unduplicated)	3,179
FTE	572	1,473	1,297	Credit Hours	44,992.50
				Annual FTE	1,500

Notes:

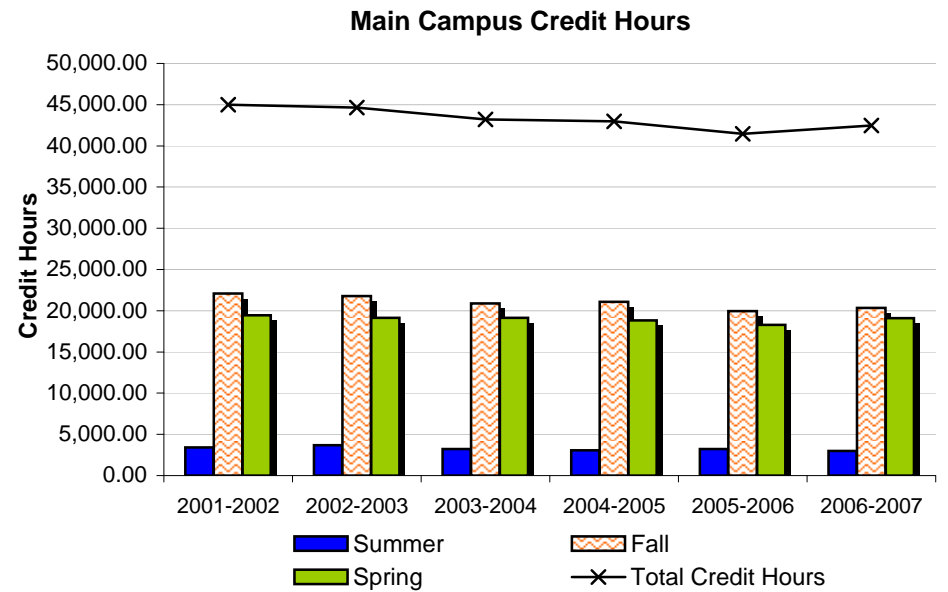
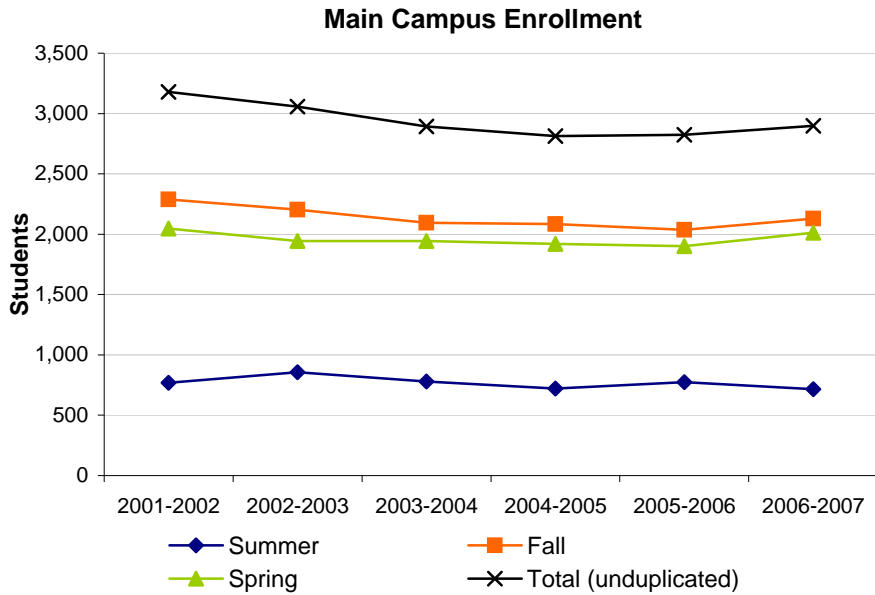
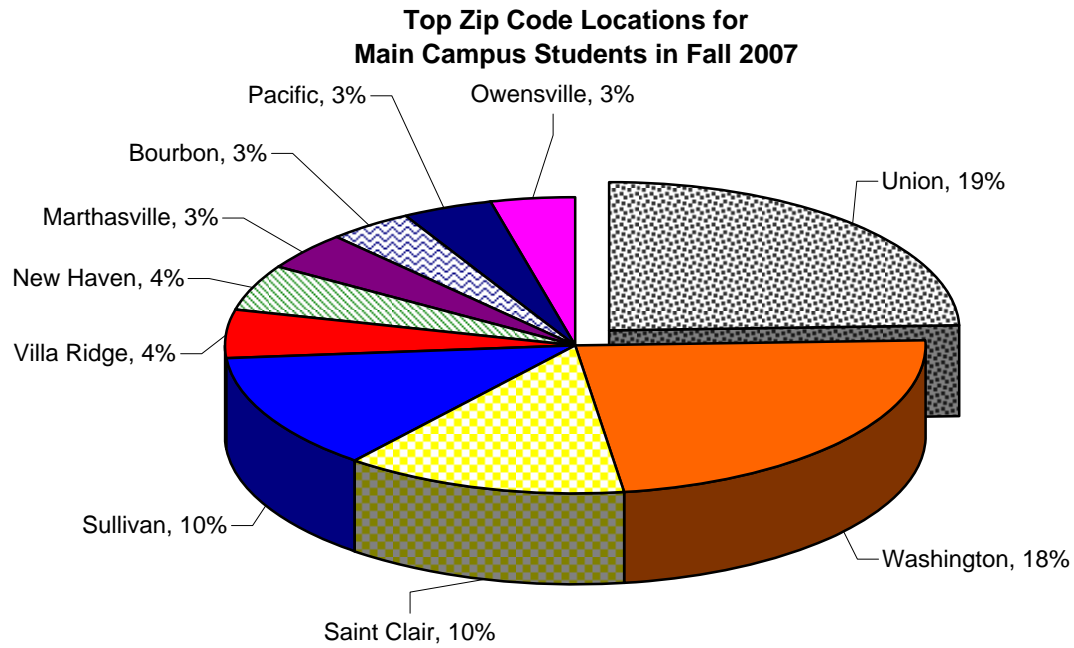
(1) All data includes students who completed a course on the Main Campus (including ITV) with a verified grade.

(2) FTE (Full-Time Equivalent): Fall and Spring = total semester hours divided by 15

Summer = total semester hours divided by 6

Annual = total academic year hours divided by 30

4.3 Main Campus Enrollment Summary



Four Rivers

4.4 Fall 2007 Four Rivers Student Characteristics

	Freshmen	Sophomore	Other	Total	% of Total
Total	136	78	21	235	100.0%
Gender					
Male	83	36	10	129	54.9%
Female	53	42	11	106	45.1%
Enrollment Status					
Full-Time	61	33	6	100	42.6%
Part-Time	75	45	15	135	57.4%
Developmental Courses					
1 Course	32	8	0	40	17.0%
2 Courses	8	2	0	10	4.3%
3+ Courses	4	0	0	4	1.7%
Location					
In-District	100	61	17	178	75.7%
Out-of-District	36	17	4	57	24.3%
Out-of-State	0	0	0	0	0.0%
International	0	0	0	0	0.0%
Other	0	0	0	0	0.0%
Age					
<18	8	0	0	8	3.4%
18-19	36	8	0	44	18.7%
20-21	25	19	1	45	19.1%
22-24	13	16	1	30	12.8%
25-29	17	12	5	34	14.5%
30-34	4	9	2	15	6.4%
35-39	5	2	4	11	4.7%
40-49	19	12	6	37	15.7%
50-64	5	0	2	7	3.0%
65 and older	3	0	0	3	1.3%
Unknown	1	0	0	1	0.4%
Race/Ethnicity					
American Indian/Alaska Native	2	0	0	2	0.9%
Asian/Pacific Islander	0	0	0	0	0.0%
Black, non-Hispanic	0	1	0	1	0.4%
Hispanic	1	0	0	1	0.4%
Nonresident Alien	0	0	0	0	0.0%
Race/Ethnicity Unknown	12	2	0	14	6.0%
White, non-Hispanic	121	75	21	217	92.3%

Source: Colleague Census Data

Notes:

(1)Includes students enrolled in any credit bearing course located on the Four Rivers campus (includes Four Rivers ITV)

(2)Developmental coursework is for any ECC campus

4.5 Four Rivers Headcount, Credit Hours & FTE by Academic Year

AY 2006-2007

	06/SU	06/FA	07/SP	AY Totals	
Headcount	23	260	206	Headcount (duplicated)	489
Credit Hours	69.00	1,316.00	1,010.00	Headcount (unduplicated)	384
FTE	12	88	67	Credit Hours	2,395.00
				Annual FTE	80

AY 2005-2006

	05/SU	05/FA	06/SP	AY Totals	
Headcount	3	161	192	Headcount (duplicated)	356
Credit Hours	9.00	895.00	1,005.00	Headcount (unduplicated)	279
FTE	2	60	67	Credit Hours	1,909.00
				Annual FTE	64

AY 2004-2005

	04/SU	04/FA	05/SP	AY Totals	
Headcount	9	180	201	Headcount (duplicated)	390
Credit Hours	27.00	871.00	994.00	Headcount (unduplicated)	295
FTE	5	58	66	Credit Hours	1,892.00
				Annual FTE	63

AY 2003-2004

	03/SU	03/FA	04/SP	AY Totals	
Headcount	9	179	215	Headcount (duplicated)	403
Credit Hours	27.00	881.00	1,084.00	Headcount (unduplicated)	316
FTE	5	59	72	Credit Hours	1,992.00
				Annual FTE	66

AY 2002-2003

	02/SU	02/FA	03/SP	AY Totals	
Headcount	12	128	235	Headcount (duplicated)	375
Credit Hours	38.00	675.00	1,097.00	Headcount (unduplicated)	285
FTE	6	45	73	Credit Hours	1,810.00
				Annual FTE	60

AY 2001-2002

	01/SU	01/FA	02/SP	AY Totals	
Headcount	10	140	203	Headcount (duplicated)	353
Credit Hours	30.00	659.00	929.00	Headcount (unduplicated)	282
FTE	5	44	62	Credit Hours	1,618.00
				Annual FTE	54

Notes:

(1) All data includes students who completed a course on the Four Rivers campus (including ITV) with a verified grade.

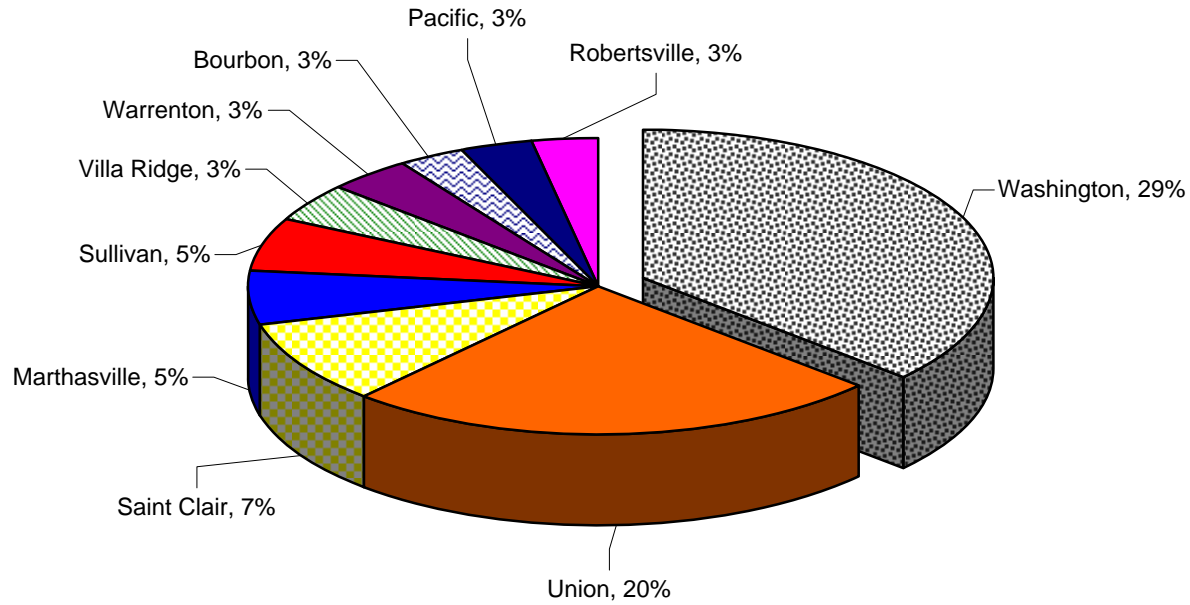
(2) FTE (Full-Time Equivalent): Fall and Spring = total semester hours divided by 15

Summer = total semester hours divided by 6

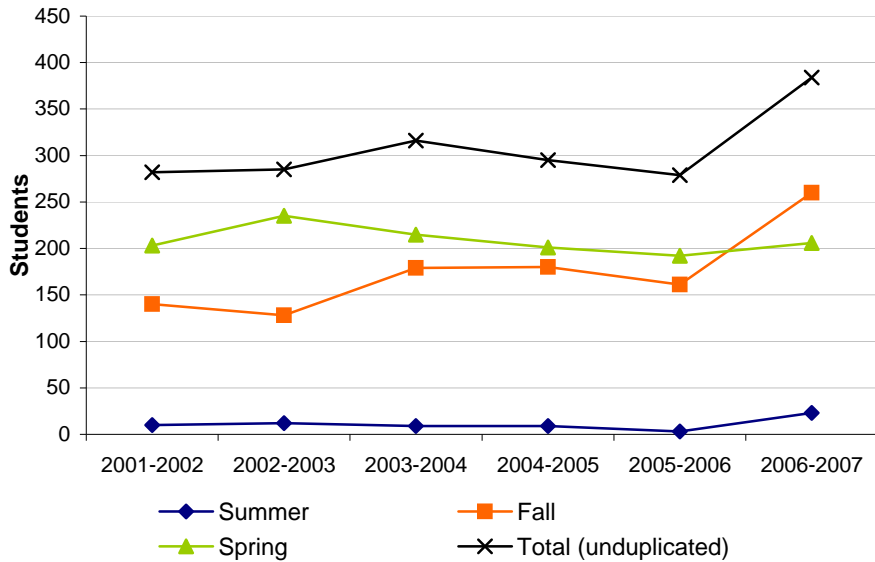
Annual = total academic year hours divided by 30

4.6 Four Rivers Enrollment Summary

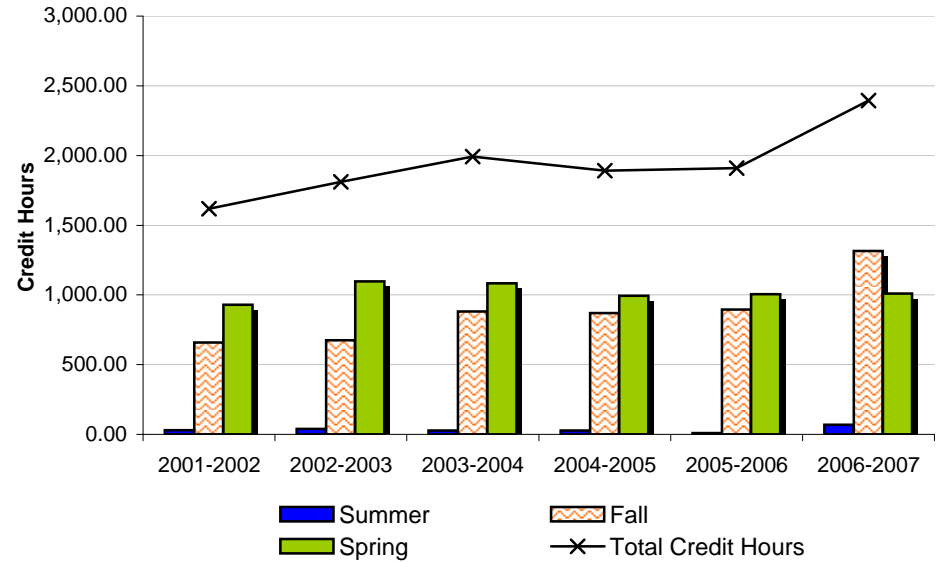
**Top Zip Code Locations for
Four Rivers Students in Fall 2007**



Four Rivers Enrollment



Four Rivers Credit Hours



Rolla

4.7 Fall 2007 Rolla Student Characteristics

	Freshmen	Sophomore	Other	Total	% of Total
Total	346	114	21	481	100.0%
Gender					
Male	100	29	4	133	27.7%
Female	246	85	17	348	72.3%
Enrollment Status					
Full-Time	185	55	5	245	50.9%
Part-Time	161	59	16	236	49.1%
Developmental Courses					
1 Course	91	12	1	104	21.6%
2 Courses	33	6	1	40	8.3%
3+ Courses	34	1	0	35	7.3%
Location					
In-District	15	11	4	30	6.2%
Out-of-District	330	103	17	450	93.6%
Out-of-State	1	0	0	1	0.2%
International	0	0	0	0	0.0%
Other	0	0	0	0	0.0%
Age					
<18	6	0	0	6	1.2%
18-19	163	18	0	181	37.6%
20-21	45	26	1	72	15.0%
22-24	31	15	3	49	10.2%
25-29	40	16	6	62	12.9%
30-34	19	14	2	35	7.3%
35-39	21	9	2	32	6.7%
40-49	16	15	4	35	7.3%
50-64	4	1	3	8	1.7%
65 and older	1	0	0	1	0.2%
Unknown	0	0	0	0	0.0%
Race/Ethnicity					
American Indian/Alaska Native	5	2	0	7	1.5%
Asian/Pacific Islander	6	0	0	6	1.2%
Black, non-Hispanic	8	2	0	10	2.1%
Hispanic	9	1	0	10	2.1%
Nonresident Alien	0	0	0	0	0.0%
Race/Ethnicity Unknown	13	5	1	19	4.0%
White, non-Hispanic	305	104	20	429	89.2%

Source: Colleague Census Data

Notes:

(1)Includes students enrolled in any credit bearing course located on the Rolla campus (includes Rolla ITV)

(2)Developmental coursework is for any ECC campus

4.8 Rolla Headcount, Credit Hours & FTE by Academic Year

AY 2006-2007

	06/SU	06/FA	07/SP	AY Totals	
Headcount	177	421	362	Headcount (duplicated)	960
Credit Hours	857.00	3,809.00	3,273.00	Headcount (unduplicated)	643
FTE	143	254	218	Credit Hours	7,939.00
				Annual FTE	265

AY 2005-2006

	05/SU	05/FA	06/SP	AY Totals	
Headcount	169	398	349	Headcount (duplicated)	916
Credit Hours	878.00	3,489.00	3,017.00	Headcount (unduplicated)	603
FTE	146	233	201	Credit Hours	7,384.00
				Annual FTE	246

AY 2004-2005

	04/SU	04/FA	05/SP	AY Totals	
Headcount	135	434	407	Headcount (duplicated)	976
Credit Hours	674.00	3,690.00	3,418.50	Headcount (unduplicated)	644
FTE	112	246	228	Credit Hours	7,782.50
				Annual FTE	259

AY 2003-2004

	03/SU	03/FA	04/SP	AY Totals	
Headcount	143	435	345	Headcount (duplicated)	923
Credit Hours	721.00	3,742.00	3,028.00	Headcount (unduplicated)	602
FTE	120	249	202	Credit Hours	7,491.00
				Annual FTE	250

AY 2002-2003

	02/SU	02/FA	03/SP	AY Totals	
Headcount	109	374	326	Headcount (duplicated)	809
Credit Hours	473.00	2,952.00	2,739.50	Headcount (unduplicated)	545
FTE	79	197	183	Credit Hours	6,164.50
				Annual FTE	205

AY 2001-2002

	01/SU	01/FA	02/SP	AY Totals	
Headcount	96	343	305	Headcount (duplicated)	744
Credit Hours	327.00	2,383.00	2,100.50	Headcount (unduplicated)	531
FTE	55	159	140	Credit Hours	4,810.50
				Annual FTE	160

Notes:

(1) All data includes students who completed a course on the Rolla campus (including ITV) with a verified grade.

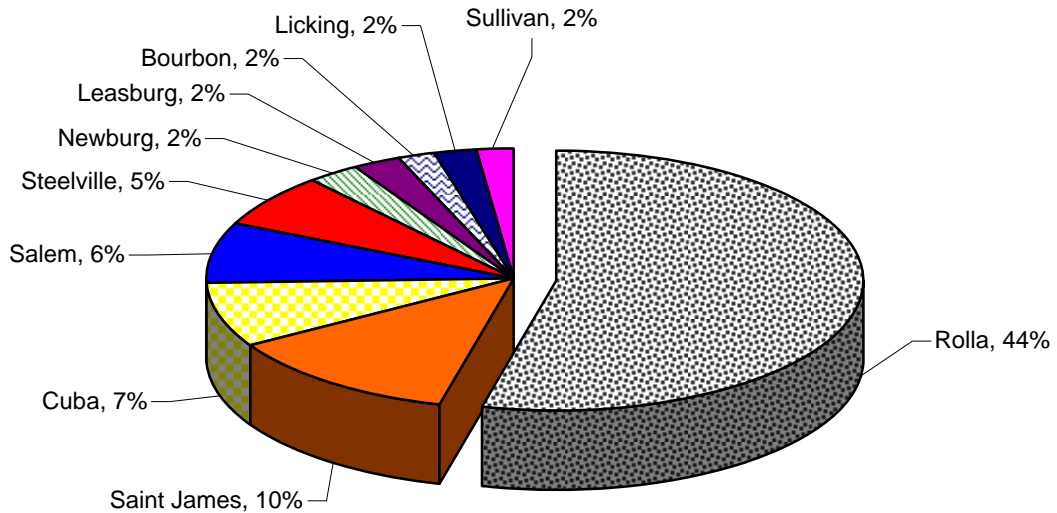
(2) FTE (Full-Time Equivalent): Fall and Spring = total semester hours divided by 15

Summer = total semester hours divided by 6

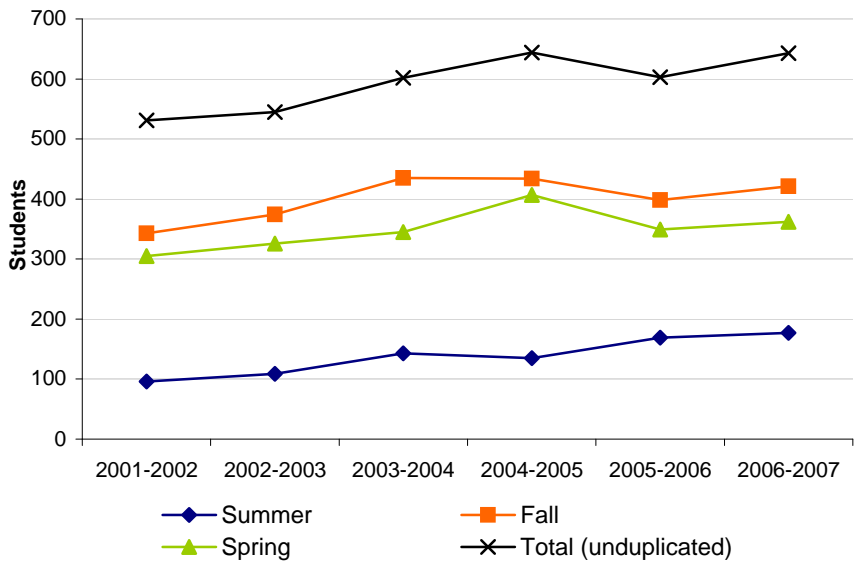
Annual = total academic year hours divided by 30

4.9 Rolla Enrollment Summary

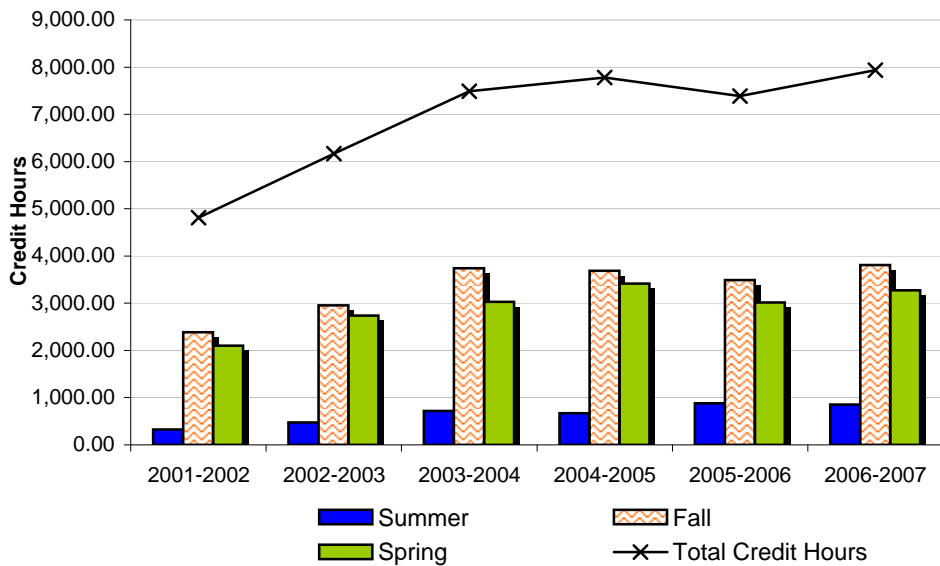
Top Zip Code Locations for Rolla Students in Fall 2007



Rolla Enrollment



Rolla Credit Hours



Southwest Area Center

4.10 Fall 2007 Southwest Area Center (SAC) Student Characteristics

	Freshmen	Sophomore	Other	Total	% of Total
Total	125	45	16	186	100.0%
Gender					
Male	30	13	7	50	26.9%
Female	95	32	9	136	73.1%
Enrollment Status					
Full-Time	67	25	8	100	53.8%
Part-Time	58	20	8	86	46.2%
Developmental Courses					
1 Course	40	11	3	54	29.0%
2 Courses	18	3	1	22	11.8%
3+ Courses	15	0	0	15	8.1%
Location					
In-District	100	43	15	158	84.9%
Out-of-District	25	2	1	28	15.1%
Out-of-State	0	0	0	0	0.0%
International	0	0	0	0	0.0%
Other	0	0	0	0	0.0%
Age					
<18	2	0	0	2	1.1%
18-19	51	10	1	62	33.3%
20-21	18	12	1	31	16.7%
22-24	13	3	2	18	9.7%
25-29	13	6	5	24	12.9%
30-34	14	5	1	20	10.8%
35-39	7	4	2	13	7.0%
40-49	6	4	3	13	7.0%
50-64	1	1	1	3	1.6%
65 and older	0	0	0	0	0.0%
Unknown	0	0	0	0	0.0%
Race/Ethnicity					
American Indian/Alaska Native	0	0	0	0	0.0%
Asian/Pacific Islander	0	0	0	0	0.0%
Black, non-Hispanic	0	0	0	0	0.0%
Hispanic	0	0	0	0	0.0%
Nonresident Alien	0	0	0	0	0.0%
Race/Ethnicity Unknown	8	3	0	11	5.9%
White, non-Hispanic	117	42	16	175	94.1%

Source: Colleague Census Data

Notes:

- (1)Includes students enrolled in any credit bearing course located on the SAC campus (includes SAC ITV)
- (2)Developmental coursework is for any ECC campus

4.11 SAC Headcount, Credit Hours & FTE by Academic Year

AY 2006-2007

	06/SU	06/FA	07/SP	AY Totals	
Headcount	76	210	177	Headcount (duplicated)	463
Credit Hours	210.00	1,032.00	798.00	Headcount (unduplicated)	364
FTE	35	69	53	Credit Hours	2,040.00
				Annual FTE	68

AY 2005-2006

	05/SU	05/FA	06/SP	AY Totals	
Headcount	62	152	156	Headcount (duplicated)	370
Credit Hours	190.00	655.00	734.00	Headcount (unduplicated)	293
FTE	32	44	49	Credit Hours	1,579.00
				Annual FTE	53

AY 2004-2005

	04/SU	04/FA	05/SP	AY Totals	
Headcount	84	176	150	Headcount (duplicated)	410
Credit Hours	182.00	780.00	632.00	Headcount (unduplicated)	337
FTE	30	52	42	Credit Hours	1,594.00
				Annual FTE	53

AY 2003-2004

	03/SU	03/FA	04/SP	AY Totals	
Headcount	89	153	162	Headcount (duplicated)	404
Credit Hours	155.00	623.00	663.00	Headcount (unduplicated)	336
FTE	26	42	44	Credit Hours	1,441.00
				Annual FTE	48

AY 2002-2003

	02/SU	02/FA	03/SP	AY Totals	
Headcount	117	136	168	Headcount (duplicated)	421
Credit Hours	189.00	570.00	616.00	Headcount (unduplicated)	356
FTE	32	38	41	Credit Hours	1,375.00
				Annual FTE	46

AY 2001-2002

	01/SU	01/FA	02/SP	AY Totals	
Headcount	113	185	150	Headcount (duplicated)	448
Credit Hours	250.00	672.00	486.00	Headcount (unduplicated)	377
FTE	42	45	32	Credit Hours	1,408.00
				Annual FTE	47

Notes:

(1) All data includes students who completed a course on the SAC campus (including ITV) with a verified grade.

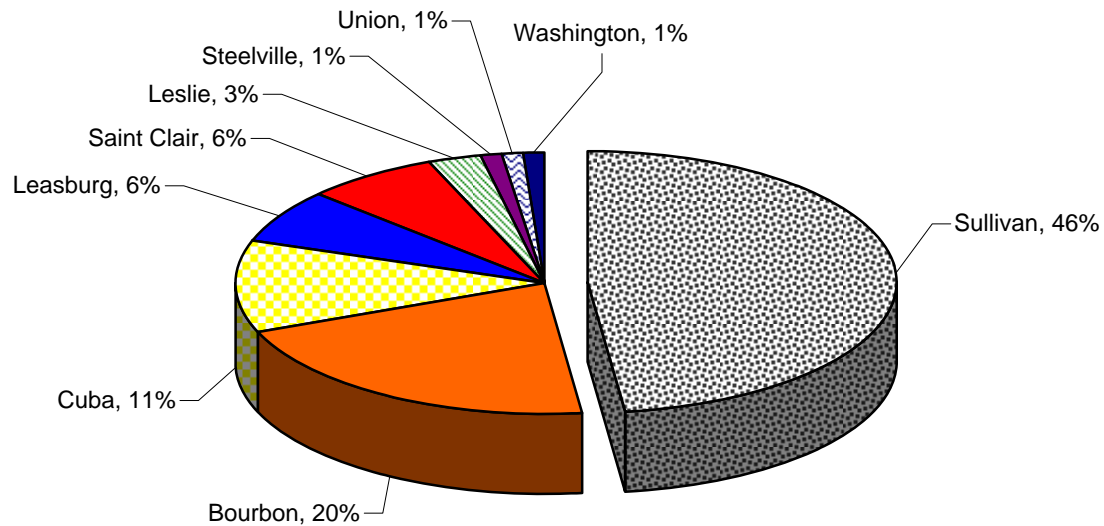
(2) FTE (Full-Time Equivalent): Fall and Spring = total semester hours divided by 15

Summer = total semester hours divided by 6

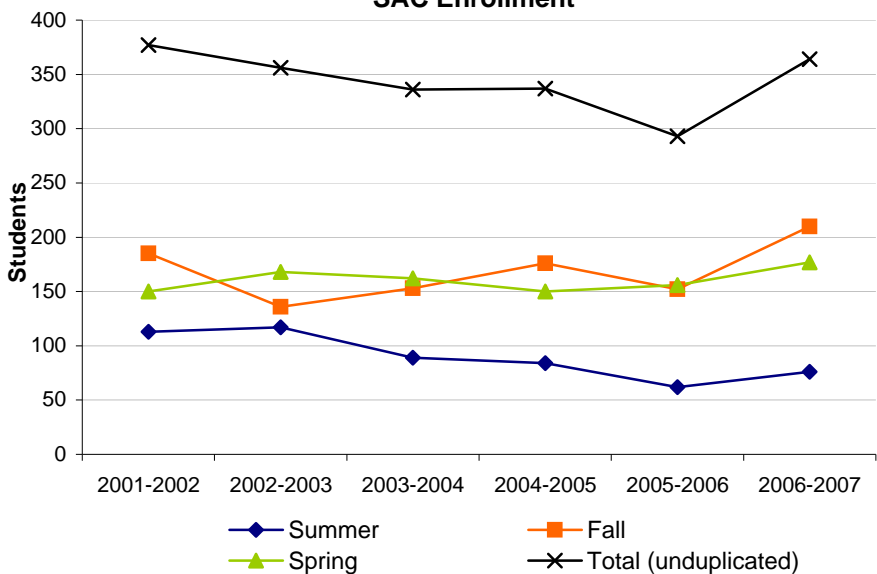
Annual = total academic year hours divided by 30

4.12 SAC Enrollment Summary

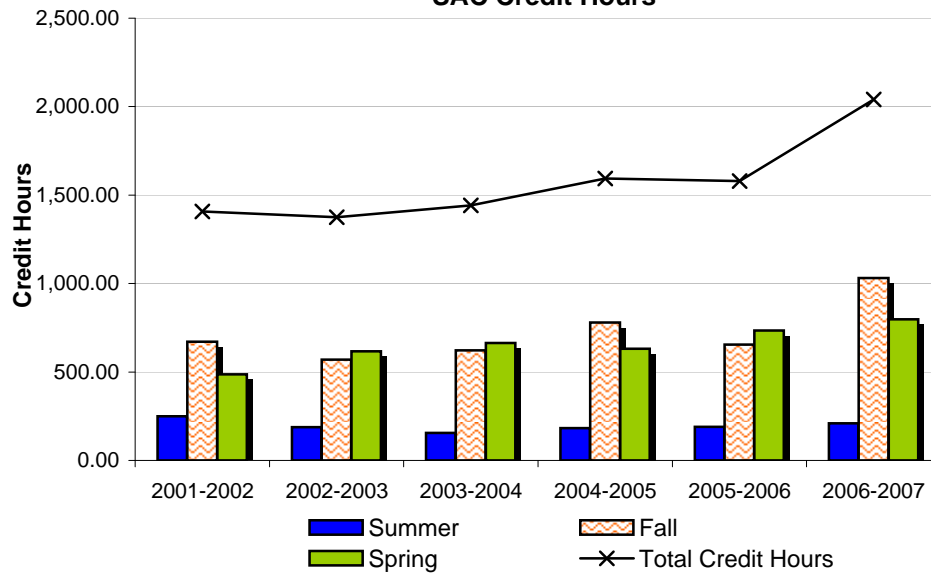
Top Zip Code Locations for SAC Students in Fall 2007



SAC Enrollment



SAC Credit Hours



On-Line Students

4.13 Fall 2007 On-Line Student Characteristics

	Freshmen	Sophomore	Other	Total	% of Total
Total	195	155	37	387	100.0%
Gender					
Male	55	34	10	99	25.6%
Female	140	121	27	288	74.4%
Enrollment Status					
Full-Time	112	80	13	205	53.0%
Part-Time	83	75	24	182	47.0%
Developmental Courses					
1 Course	61	11	2	74	19.1%
2 Courses	22	7	1	30	7.8%
3+ Courses	11	0	0	11	2.8%
Location					
In-District	111	113	30	254	65.6%
Out-of-District	83	42	7	132	34.1%
Out-of-State	0	0	0	0	0.0%
International	1	0	0	1	0.3%
Other	0	0	0	0	0.0%
Age					
<18	1	0	0	1	0.3%
18-19	69	25	2	96	24.8%
20-21	24	36	6	66	17.1%
22-24	14	23	4	41	10.6%
25-29	28	24	9	61	15.8%
30-34	16	19	3	38	9.8%
35-39	15	13	4	32	8.3%
40-49	22	11	4	37	9.6%
50-64	5	4	5	14	3.6%
65 and older	1	0	0	1	0.3%
Unknown	0	0	0	0	0.0%
Race/Ethnicity					
American Indian/Alaska Native	0	0	0	0	0.0%
Asian/Pacific Islander	1	2	0	3	0.8%
Black, non-Hispanic	3	0	0	3	0.8%
Hispanic	0	1	0	1	0.3%
Nonresident Alien	0	0	0	0	0.0%
Race/Ethnicity Unknown	10	5	0	15	3.9%
White, non-Hispanic	181	147	37	365	94.3%

Source: Colleague Census Data

Notes:

- (1)Includes students enrolled in any on-line credit bearing course
- (2)Developmental coursework is for any ECC campus

4.14 On-Line Student Headcount, Credit Hours & FTE by Academic Year

AY 2006-2007

	06/SU	06/FA	07/SP	AY Totals	
Headcount	257	410	448	Headcount (duplicated)	1,115
Credit Hours	886.00	1,612.00	1,704.00	Headcount (unduplicated)	906
FTE	148	107	114	Credit Hours	4,202.00
				Annual FTE	140

AY 2005-2006

	05/SU	05/FA	06/SP	AY Totals	
Headcount	189	369	374	Headcount (duplicated)	932
Credit Hours	652.00	1,449.00	1,454.00	Headcount (unduplicated)	795
FTE	109	97	97	Credit Hours	3,555.00
				Annual FTE	119

AY 2004-2005

	04/SU	04/FA	05/SP	AY Totals	
Headcount	154	284	268	Headcount (duplicated)	706
Credit Hours	511.00	1,074.00	1,008.00	Headcount (unduplicated)	607
FTE	85	72	67	Credit Hours	2,593.00
				Annual FTE	86

AY 2003-2004

	03/SU	03/FA	04/SP	AY Totals	
Headcount	175	179	240	Headcount (duplicated)	594
Credit Hours	584.00	619.00	877.00	Headcount (unduplicated)	507
FTE	97	41	58	Credit Hours	2,080.00
				Annual FTE	69

AY 2002-2003

	02/SU	02/FA	03/SP	AY Totals	
Headcount	133	151	193	Headcount (duplicated)	477
Credit Hours	394.00	487.00	639.00	Headcount (unduplicated)	421
FTE	66	32	43	Credit Hours	1,520.00
				Annual FTE	51

AY 2001-2002

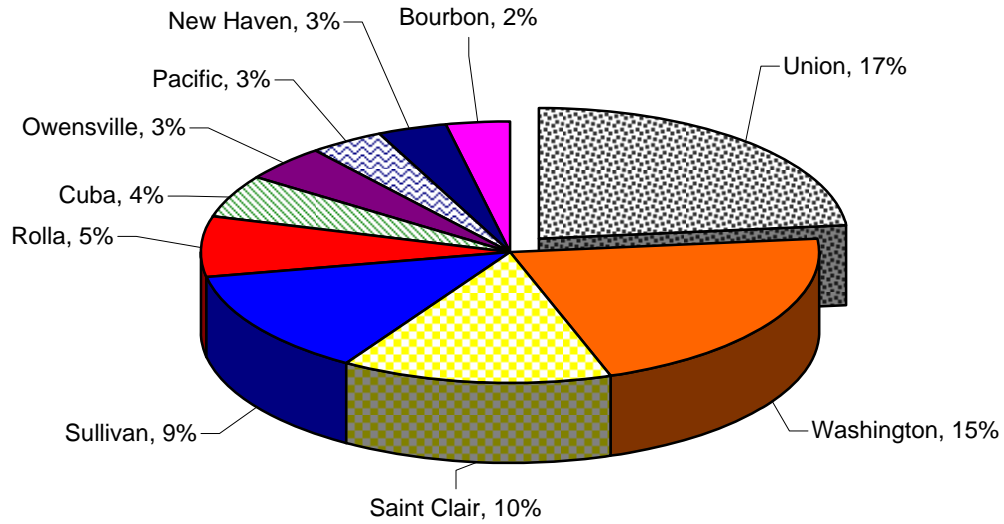
	01/SU	01/FA	02/SP	AY Totals	
Headcount	50	82	171	Headcount (duplicated)	303
Credit Hours	126.00	264.00	551.00	Headcount (unduplicated)	277
FTE	21	18	37	Credit Hours	941.00
				Annual FTE	31

Notes:

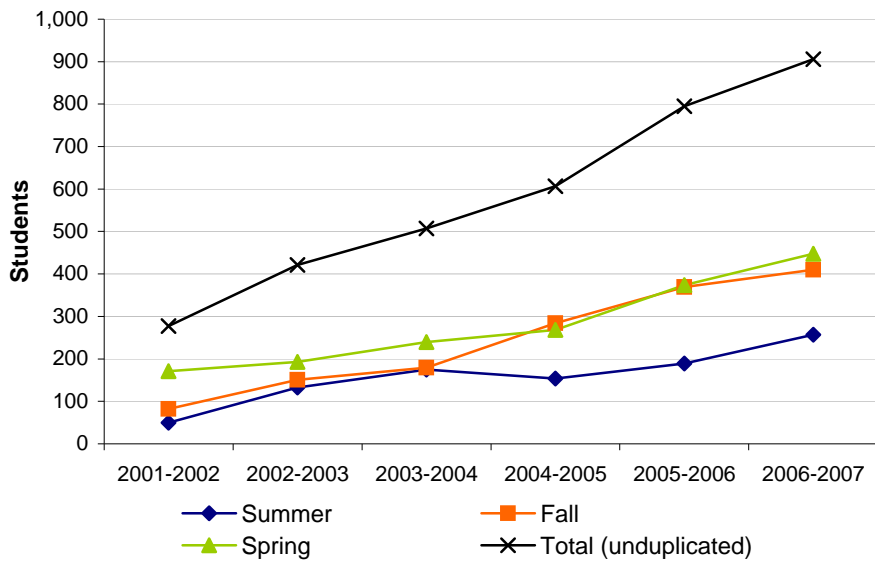
- (1) All data includes students who completed an on-line course with a verified grade.
- (2) FTE (Full-Time Equivalent):
 Fall and Spring = total semester hours divided by 15
 Summer = total semester hours divided by 6
 Annual = total academic year hours divided by 30

4.15 On-Line Student Enrollment Summary

Top Zip Code Locations for On-Line Students in Fall 2007



On-Line Enrollment



On-Line Credit Hours

