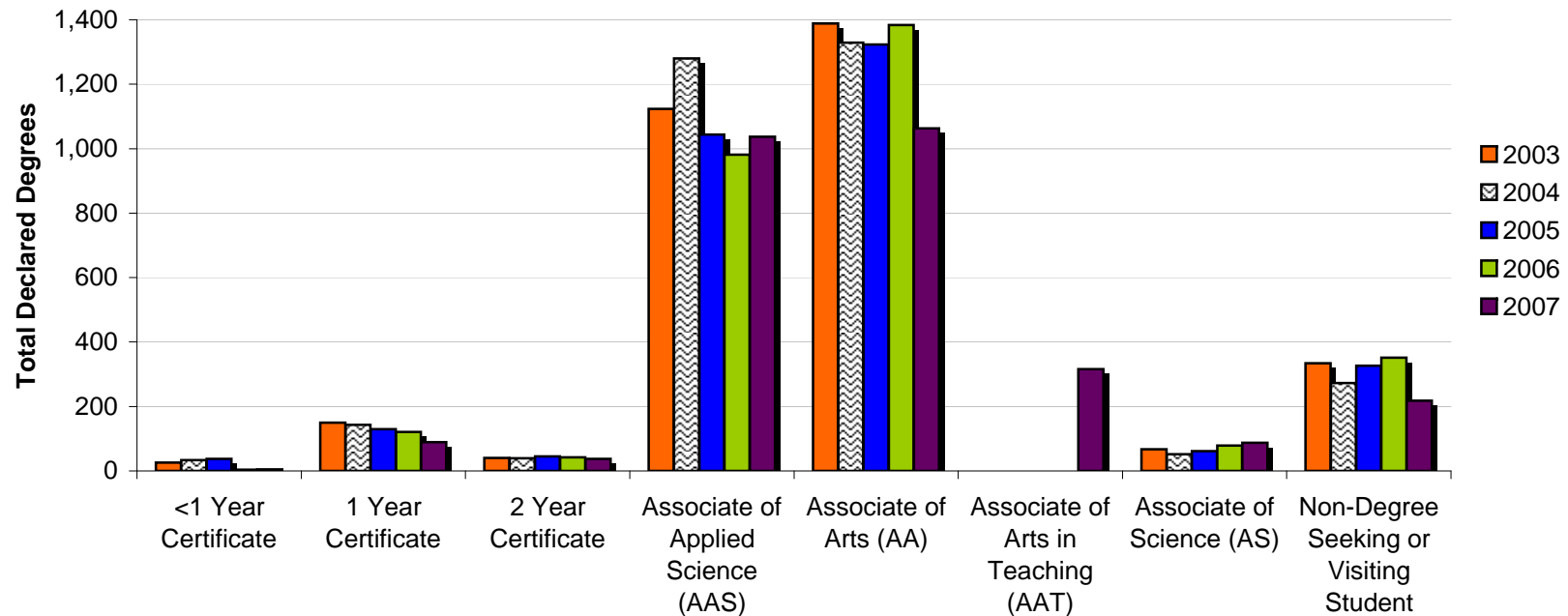


## 5.1 Fall Declared Degrees and Certificates

						% Change	
	2003	2004	2005	2006	2007	2003-2007	2006-2007
Total Declared Degrees*	3,128	3,150	2,966	2,962	2,852	-8.8%	-3.7%
<b>Degree Type</b>							
<1 Year Certificate	26	34	37	4	5	-80.8%	25.0%
1 Year Certificate	150	143	130	121	89	-40.7%	-26.4%
2 Year Certificate	40	39	45	42	37	-7.5%	-11.9%
Associate of Applied Science (AAS)	1,123	1,280	1,044	981	1,037	-7.7%	5.7%
Associate of Arts (AA)	1,388	1,329	1,323	1,384	1,063	-23.4%	-23.2%
Associate of Arts in Teaching (AAT)	na	na	na	na	316	na	na
Associate of Science (AS)	67	52	61	79	87	29.9%	10.1%
Non-Degree Seeking or Visiting Student	334	273	326	351	218	-34.7%	-37.9%



Source: Colleague

\*Students may have more than one active declared degree (dual credit/dual technical credit students not included).

## 5.2 Fall Course Enrollment by Academic Division

### Career & Technical

							% Change		
Course Prefix	Description	2003	2004	2005	2006	2007	Total Students	2003-2007	2006-2007
AI	HVAC/R	212	306	321	222	181	1,242	-14.6%	-18.5%
AT	Automotive Technology	41	49	36	37	20	183	-51.2%	-45.9%
BC	Building Construction Technology	24	14	14	18	10	80	-58.3%	-44.4%
CS	Computer Information Systems	467	328	330	320	262	1,707	-43.9%	-18.1%
DF	Drafting & Design	87	113	58	86	98	442	12.6%	14.0%
HM	Hospitality/Culinary Arts	145	205	183	185	159	877	9.7%	-14.1%
IE	Industrial Engineering Technology	105	85	91	84	75	440	-28.6%	-10.7%
MA	Precision Machining	127	85	119	116	68	515	-46.5%	-41.4%
WL	Welding	14	15	28	29	16	102	14.3%	-44.8%
<b>Total Students in Career &amp; Technical</b>		<b>1,222</b>	<b>1,200</b>	<b>1,180</b>	<b>1,097</b>	<b>889</b>	<b>5,588</b>	<b>-27.3%</b>	<b>-19.0%</b>

### Education & Social Sciences

							% Change		
Course Prefix	Description	2003	2004	2005	2006	2007	Total Students	2003-2007	2006-2007
AC	Accounting	263	272	341	311	275	1,462	4.6%	-11.6%
AN	Anthropology	6	10	10	--	--	26	na	na
BT	Business Technology	262	282	281	322	229	1,376	-12.6%	-28.9%
BU	Business	329	295	336	433	361	1,754	9.7%	-16.6%
CJ	Criminal Justice	20	31	68	48	55	222	175.0%	14.6%
EC	Economics	184	185	142	154	135	800	-26.6%	-12.3%
ED	Education	308	269	226	143	222	1,168	-27.9%	55.2%
GE	Geography	40	42	46	32	26	186	-35.0%	-18.8%
HI	History	376	354	277	280	315	1,602	-16.2%	12.5%
PE	Physical Education	618	546	456	525	595	2,740	-3.7%	13.3%
PS	Political Science	185	174	162	150	102	773	-44.9%	-32.0%
PY	Psychology	379	365	308	365	425	1,842	12.1%	16.4%
SO	Sociology	246	211	215	271	274	1,217	11.4%	1.1%
<b>Total Students in Education &amp; Social Sciences</b>		<b>3,216</b>	<b>3,036</b>	<b>2,868</b>	<b>3,034</b>	<b>3,014</b>	<b>15,168</b>	<b>-6.3%</b>	<b>-0.7%</b>

### English, Foreign Language & Philosophy

							% Change		
Course Prefix	Description	2003	2004	2005	2006	2007	Total Students	2003-2007	2006-2007
EN	English	1,246	1,317	1,350	1,511	1,487	6,911	19.3%	-1.6%
FL	Foreign Language (Arabic, French, German & Spanish)	65	74	88	132	131	490	101.5%	-0.8%
JR	Journalism	7	6	8	1	6	28	-14.3%	500.0%
PR	Philosophy	109	86	89	135	116	535	6.4%	-14.1%
<b>Total Students in English, Foreign Language &amp; Philosophy</b>		<b>1,427</b>	<b>1,483</b>	<b>1,535</b>	<b>1,779</b>	<b>1,740</b>	<b>7,964</b>	<b>21.9%</b>	<b>-2.2%</b>

## 5.2 Fall Course Enrollment by Academic Division (cont'd)

### Fine & Performing Arts

							% Change		
Course Prefix	Description	2003	2004	2005	2006	2007	Total Students	2003-2007	2006-2007
AR	Art	325	310	282	286	345	1,548	6.2%	20.6%
CT	Communication, Media & Theatre	515	434	469	487	523	2,428	1.6%	7.4%
GD	Graphic Design	159	164	149	162	172	806	8.2%	6.2%
MU	Music	362	328	265	304	302	1,561	-16.6%	-0.7%
<b>Total Students in Fine &amp; Performing Arts</b>		<b>1,361</b>	<b>1,236</b>	<b>1,165</b>	<b>1,239</b>	<b>1,342</b>	<b>6,343</b>	<b>-1.4%</b>	<b>8.3%</b>

### Nursing & Allied Health

							% Change		
Course Prefix	Description	2003	2004	2005	2006	2007	Total Students	2003-2007	2006-2007
EM	Emergency Medical Technology/Paramedic	111	148	94	125	112	590	0.9%	-10.4%
FT	Fire Technology	20	40	38	35	30	163	50.0%	-14.3%
NR	Nursing	199	190	225	196	158	968	-20.6%	-19.4%
RC	Respiratory Care	71	61	64	81	96	373	35.2%	18.5%
<b>Total Students in Nursing &amp; Allied Health</b>		<b>401</b>	<b>439</b>	<b>421</b>	<b>437</b>	<b>396</b>	<b>2,094</b>	<b>-1.2%</b>	<b>-9.4%</b>

### Science & Mathematics

							% Change		
Course Prefix	Description	2003	2004	2005	2006	2007	Total Students	2003-2007	2006-2007
BI	Biology	977	1,028	845	892	933	4,675	-4.5%	4.6%
CH	Chemistry	253	281	185	263	240	1,222	-5.1%	-8.7%
EG	Pre-Engineering	69	56	75	62	69	331	0.0%	11.3%
ES	Environmental Science	--	--	9	28	35	72	na	25.0%
GL	Geology	--	39	41	44	29	153	na	-34.1%
MT	Mathematics	950	1,101	1,040	1,102	1,178	5,371	24.0%	6.9%
PH	Physics/Physical Science	125	130	138	115	82	590	-34.4%	-28.7%
<b>Total Students in Science &amp; Mathematics</b>		<b>2,374</b>	<b>2,635</b>	<b>2,333</b>	<b>2,506</b>	<b>2,566</b>	<b>12,414</b>	<b>8.1%</b>	<b>2.4%</b>

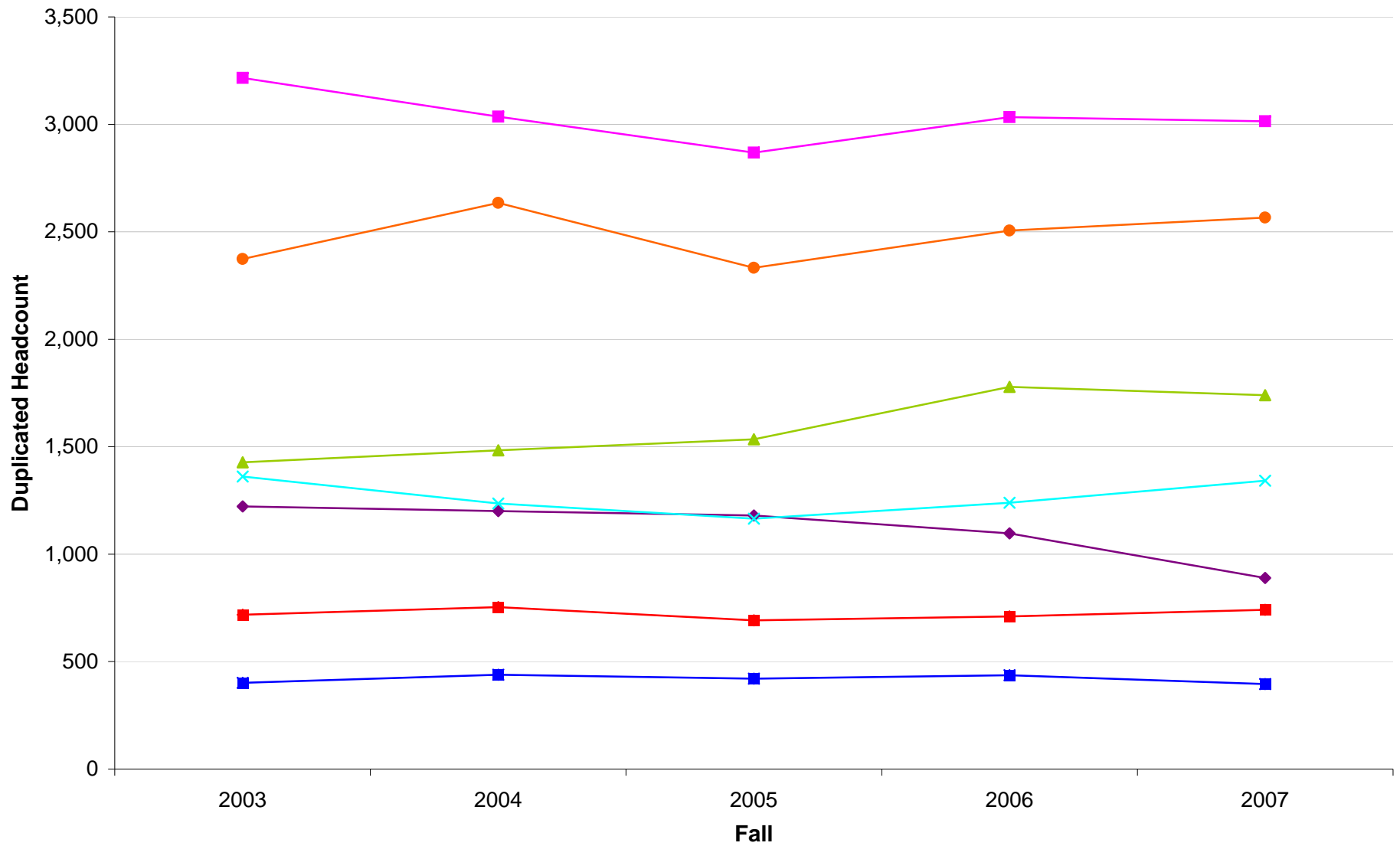
### Student Success

							% Change		
Course Prefix	Description	2003	2004	2005	2006	2007	Total Students	2003-2007	2006-2007
FS	Student Success	718	754	692	710	741	3,615	3.2%	4.4%

Source: Colleague Fall Census

Note: enrollment figures are duplicated student headcounts

### 5.3 Fall Enrollment Trend by Academic Division



- ◆ Career & Technical
- ▲ English, Foreign Language & Philosophy
- Nursing & Allied Health
- Student Success
- Education & Social Sciences
- × Fine & Performing Arts
- Science & Mathematics

Source: Colleague Fall Census

## 5.4 Fall Dual Credit Course Enrollment

Dual Credit/Dual Enrollment							% Change		
Course		2003	2004	2005	2006	2007	Total Students	2003-2007	2006-2007
Prefix	Description								
BI	Biology	40	18	52	56	70	236	75.0%	25.0%
CT	Communication, Media & Theatre	32	30	66	67	83	278	159.4%	23.9%
EN	English	73	46	70	65	47	301	-35.6%	-27.7%
GL	Geology	--	--	--	12	22	34	na	83.3%
HI	History	127	133	91	106	117	574	-7.9%	10.4%
MT	Mathematics	113	104	132	152	152	653	34.5%	0.0%
PE	Physical Education	--	--	--	3	--	3	na	na
PY	Psychology	135	86	78	94	72	465	-46.7%	-23.4%
SO	Sociology	35	37	57	86	121	336	245.7%	40.7%
<b>Total Students in Dual Credit/Dual Enrollment</b>		<b>555</b>	<b>454</b>	<b>546</b>	<b>641</b>	<b>684</b>	<b>2,880</b>	<b>23.2%</b>	<b>6.7%</b>

Dual Technical Credit							% Change		
Course		2003	2004	2005 <sup>(1)</sup>	2006	2007	Total Students	2003-2007	2006-2007
Prefix	Description								
AC	Accounting	4	--	120	8	--	132	na	na
AI	HVAC/R	36	18	--	--	--	54	na	na
AR	Art	9	5	3	2	42	61	366.7%	2000.0%
AT	Automotive Technology	13	72	86	65	143	379	1000.0%	120.0%
BC	Building Construction Technology	36	95	82	82	96	391	166.7%	17.1%
BT	Business Technology	85	167	291	64	93	700	9.4%	45.3%
BU	Business	--	45	23	7	8	83	na	14.3%
CS	Computer Information Systems	21	28	41	36	47	173	123.8%	30.6%
DF	Drafting & Design	33	45	69	72	76	295	130.3%	5.6%
ED	Education	--	--	--	--	9	9	na	na
EM	Emergency Medical Technology/Paramedic	--	--	--	16	29	45	na	na
GD	Graphic Design	28	25	67	45	135	300	382.1%	200.0%
HM	Hospitality	--	7	--	--	--	7	na	na
IE	Industrial Engineering Technology	10	11	13	9	8	51	-20.0%	-11.1%
MA	Precision Machining	40	64	76	56	82	318	105.0%	46.4%
WL	Welding	6	41	33	59	80	219	1233.3%	35.6%
<b>Total Students in Dual Technical Credit</b>		<b>321</b>	<b>623</b>	<b>904</b>	<b>521</b>	<b>848</b>	<b>3,217</b>	<b>164.2%</b>	<b>62.8%</b>

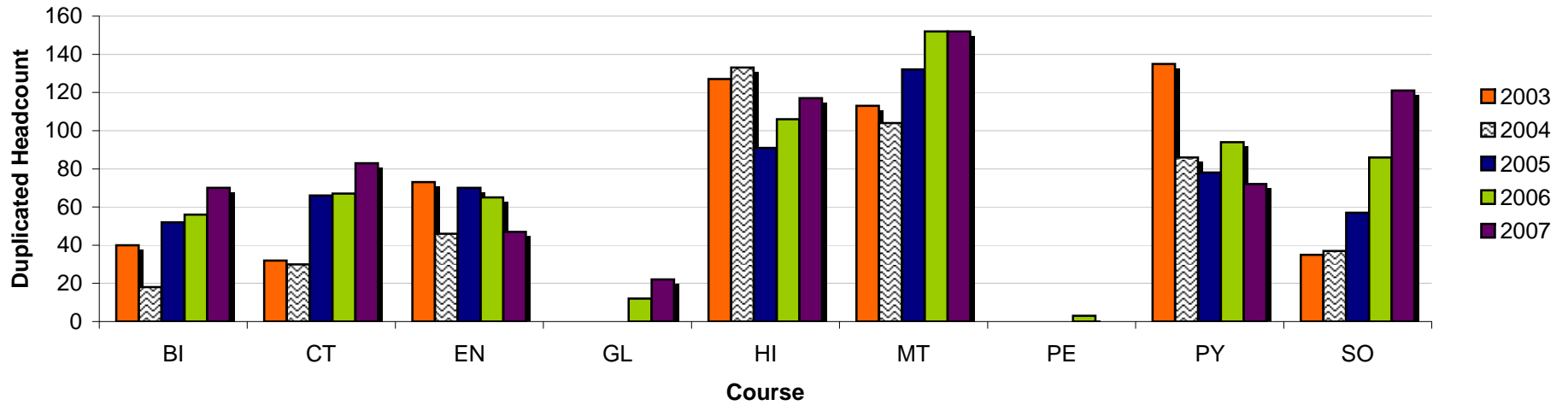
Source: Colleague Fall Census

Notes:

- (1) The increase for Dual Technical Credit enrollment in Fall 2005 was due to a temporary change in the enrollment process
- (2) Enrollment figures are duplicated student headcounts

## 5.5 Fall Dual Credit Course Enrollment Charts

### Dual Credit/Dual Enrollment



### Dual Technical Credit

