

## 6.1 2006 - 2007 Degrees & Certificates Awarded by Program Area

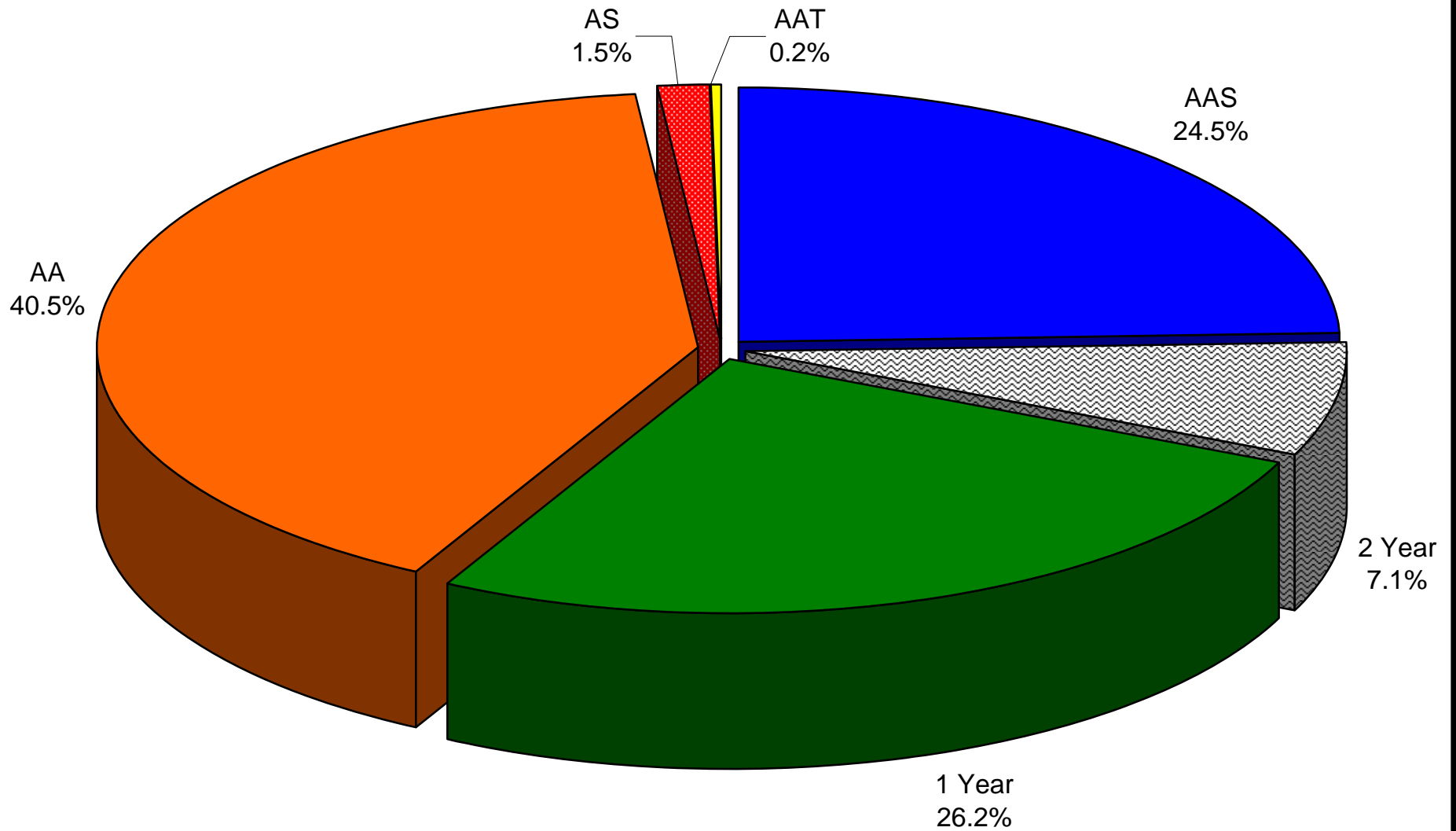
Career & Technical Majors				
Program	AAS	2 Year	1 Year	Total
Accounting	4		5	9
Administrative Assistant	4	4	8	16
Apprenticeship Training	1			1
Automotive Technology	3		3	6
Building Construction	2		2	4
Business Management/Marketing	18		22	40
Business Technology Specialist	4	8	11	23
Computer Information Systems	2		2	4
Criminal Justice	1			1
Culinary Arts	9		9	18
Drafting and Design	4		4	8
EMT/Paramedic	9		14	23
Fire Technology	3		2	5
HVAC	2		15	17
Industrial Engineering Technology	2	7	7	16
Legal Secretary	2	2	5	9
Medical Secretary	4	4	7	15
Medical Transcription			1	1
Multimedia/Graphic Design	7	4	7	18
Nursing	29			29
Precision Machine/CNC	5	8	11	24
Radiologic Technology	3			3
Respiratory Care	10			10
Welding			2	2
<b>Total</b>	<b>128</b>	<b>37</b>	<b>137</b>	<b>302</b>

General Majors				
Program	AA	AS	AAT	Total
Biology	4			4
Business	38			38
Communications	1			1
Computer Information Systems	6			6
Education	22		1	23
Engineering Management		8		8
English	3			3
Fine Arts	7			7
General Studies	97			97
Health Science	5			5
History	2			2
Hospitality				0
Mathematics	1			1
Medical Science	6			6
Physical Science	1			1
Psychology	11			11
Recreation	1			1
Social Science	7			7
<b>Total</b>	<b>212</b>	<b>8</b>	<b>1</b>	<b>221</b>

Source: Colleague

Note: For degree type definitions, see the *Glossary of Terms*

6.2 2006 - 2007 Degrees & Certificates  
Awarded by Program Area  
Chart

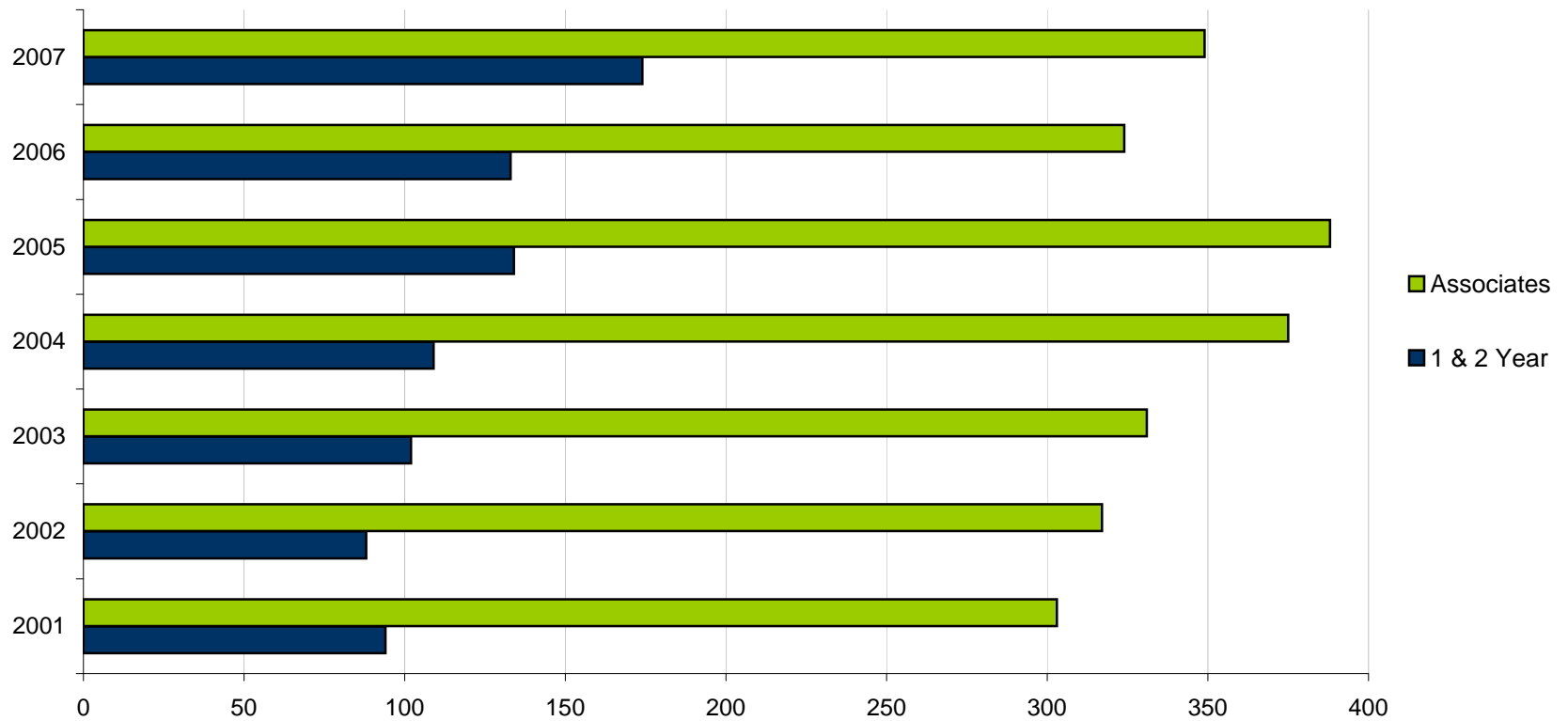


Source: Colleague

Note: For degree type definitions, see the Glossary of Terms

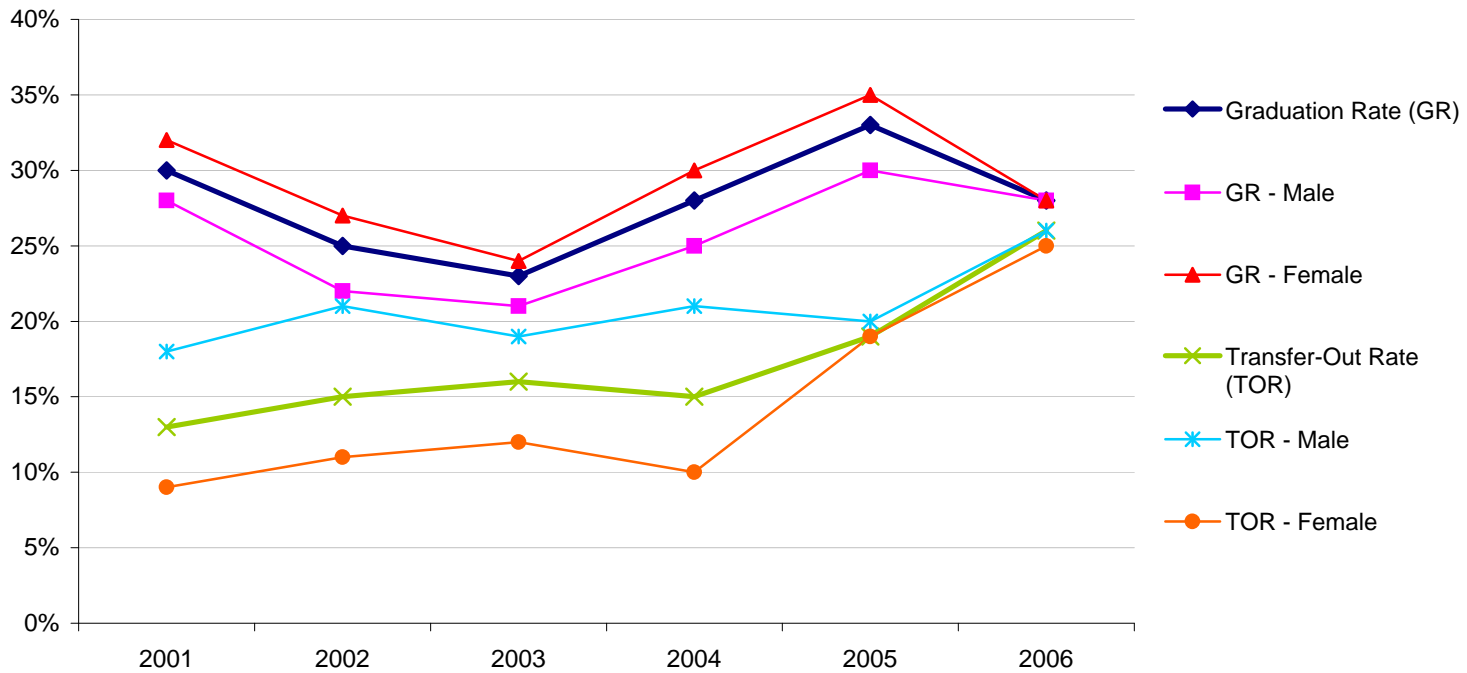
### 6.3 Degrees Awarded

	2001	2002	2003	2004	2005	2006	2007	% Change	
								2001-2007	2006-2007
Total	397	405	433	484	522	457	523	31.7%	14.4%
<b>Degree Type</b>									
Associates (AA, AS, AAT, AAS)	303	317	331	375	388	324	349	15.2%	7.7%
1 & 2 Year Certificates	94	88	102	109	134	133	174	85.1%	30.8%



### 6.4 Graduation & Transfer Rates

	2001	2002	2003	2004	2005	2006	% Difference	
							2001-2006	2005-2006
<b>Graduation Rate*</b>	30%	25%	23%	28%	33%	28%	-2%	-5%
Male	28%	22%	21%	25%	30%	28%	0%	-2%
Female	32%	27%	24%	30%	35%	28%	-4%	-7%
<b>Transfer-Out Rate*</b>	13%	15%	16%	15%	19%	26%	13%	7%
Male	18%	21%	19%	21%	20%	26%	8%	6%
Female	9%	11%	12%	10%	19%	25%	16%	6%



Source: IPEDS

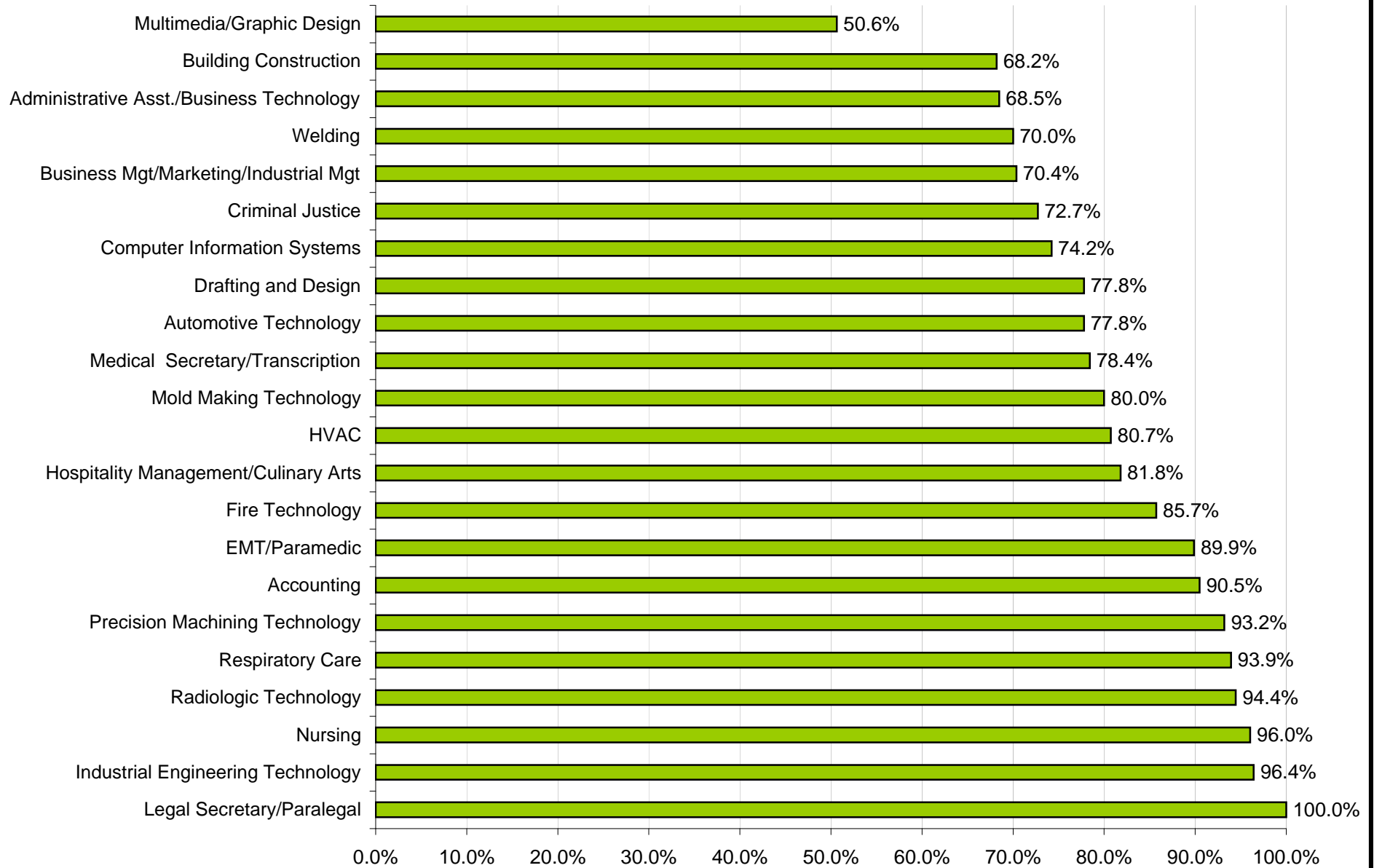
\*Based on fall cohort - see *Glossary of Terms* for graduation rate and transfer-out rate definition

## 6.5 Career & Technical Graduate Placement Rates 1998-2006

Program	Total Graduates	Employed Related	Employed Not Related	Continuing Education Related	Continuing Education Not Related	Not Employed	Not Available or Unknown
Accounting	42	85.7%	4.8%	4.8%	0.0%	2.4%	2.4%
Administrative Asst./Business Technology	92	66.3%	14.1%	2.2%	1.1%	8.7%	7.6%
Automotive Technology	9	77.8%	22.2%	0.0%	0.0%	0.0%	0.0%
Building Construction	22	63.6%	18.2%	4.5%	0.0%	0.0%	13.6%
Business Mgt/Marketing/Industrial Mgt	108	62.0%	13.9%	8.3%	0.0%	10.2%	4.6%
Computer Information Systems	66	63.6%	19.7%	10.6%	0.0%	1.5%	4.5%
Criminal Justice	11	63.6%	18.2%	9.1%	0.0%	0.0%	9.1%
Drafting and Design	72	66.7%	13.9%	11.1%	0.0%	2.8%	5.6%
EMT/Paramedic	69	88.4%	2.9%	1.4%	0.0%	2.9%	4.3%
Fire Technology	21	85.7%	4.8%	0.0%	0.0%	0.0%	9.5%
Hospitality Management/Culinary Arts	22	81.8%	9.1%	0.0%	0.0%	4.5%	4.5%
HVAC	83	78.3%	9.6%	2.4%	0.0%	6.0%	3.6%
Industrial Engineering Technology	28	92.9%	0.0%	3.6%	0.0%	0.0%	3.6%
Legal Secretary/Paralegal	15	100.0%	0.0%	0.0%	0.0%	0.0%	0.0%
Medical Secretary/Transcription	51	72.5%	5.9%	5.9%	2.0%	5.9%	7.8%
Mold Making Technology	10	80.0%	10.0%	0.0%	0.0%	10.0%	0.0%
Multimedia/Graphic Design	77	37.7%	33.8%	13.0%	1.3%	7.8%	6.5%
Nursing	202	96.0%	0.0%	0.0%	0.0%	0.5%	3.5%
Precision Machining Technology	44	88.6%	6.8%	4.5%	0.0%	0.0%	0.0%
Radiologic Technology	18	94.4%	5.6%	0.0%	0.0%	0.0%	0.0%
Respiratory Care	33	90.9%	3.0%	3.0%	0.0%	0.0%	6.1%
Welding	10	70.0%	30.0%	0.0%	0.0%	0.0%	0.0%
<b>Overall Total/Percentage</b>	<b>1105</b>	<b>76.6%</b>	<b>10.1%</b>	<b>4.5%</b>	<b>0.3%</b>	<b>3.8%</b>	<b>4.7%</b>

Source: 180-Day Graduate Follow-Up Report

**6.6 Percentage of Career & Technical Graduates Employed or  
Continuing Education in Related Field of Study  
1998-2006**

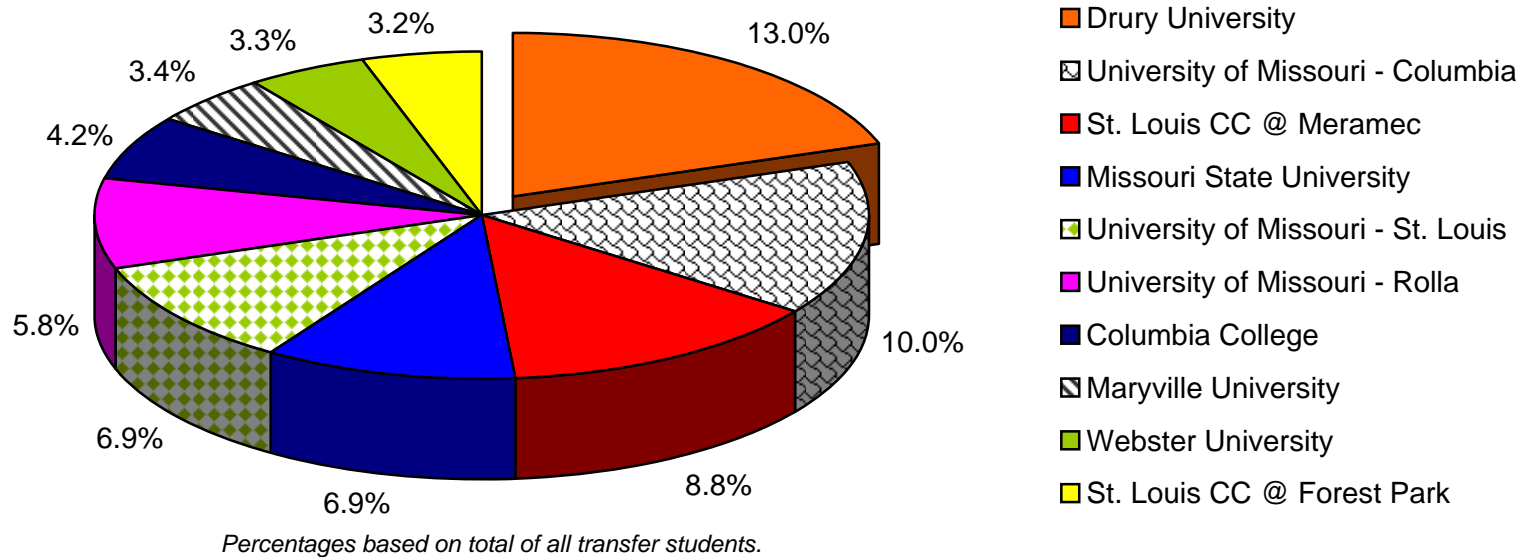


Source: 180-Day Graduate Follow-up Report

### 6.7 Institutional Destination of ECC Transfer Students

Top 10	2004		2005		2006	
	Institution	Transfers	Institution	Transfers	Institution	Transfers
1	St. Louis CC @ Meramec	37	Drury University	45	Drury University	49
2	University of Missouri - Columbia	37	University of Missouri - Columbia	32	University of Missouri - Columbia	31
3	Drury University	36	University of Missouri - St. Louis	31	Missouri State University	25
4	Missouri State University	26	St. Louis CC @ Meramec	27	St. Louis CC @ Meramec	24
5	University of Missouri - Rolla	21	Columbia College	21	University of Missouri - St. Louis	20
6	University of Missouri - St. Louis	18	University of Missouri - Rolla	20	Central Methodist University	19
7	Missouri Baptist University	16	Webster University	19	University of Missouri - Rolla	17
8	Maryville University	13	Missouri State University	18	St. Louis CC @ Forest Park	14
9	Lindenwood University	12	Central Missouri State University	17	Southeast Missouri State University	13
10	Columbia College	11	Maryville University	16	Columbia College	10

**Top 10 Receiving Institutions of ECC Transfer Students  
2004-2006**



Source: DHE07-2 (Institutional Origin of Undergraduate Transfer Students) and EMSAS

Note: Data are provided by receiving institutions. Data includes first-time transfer students in summer or fall of given year.