

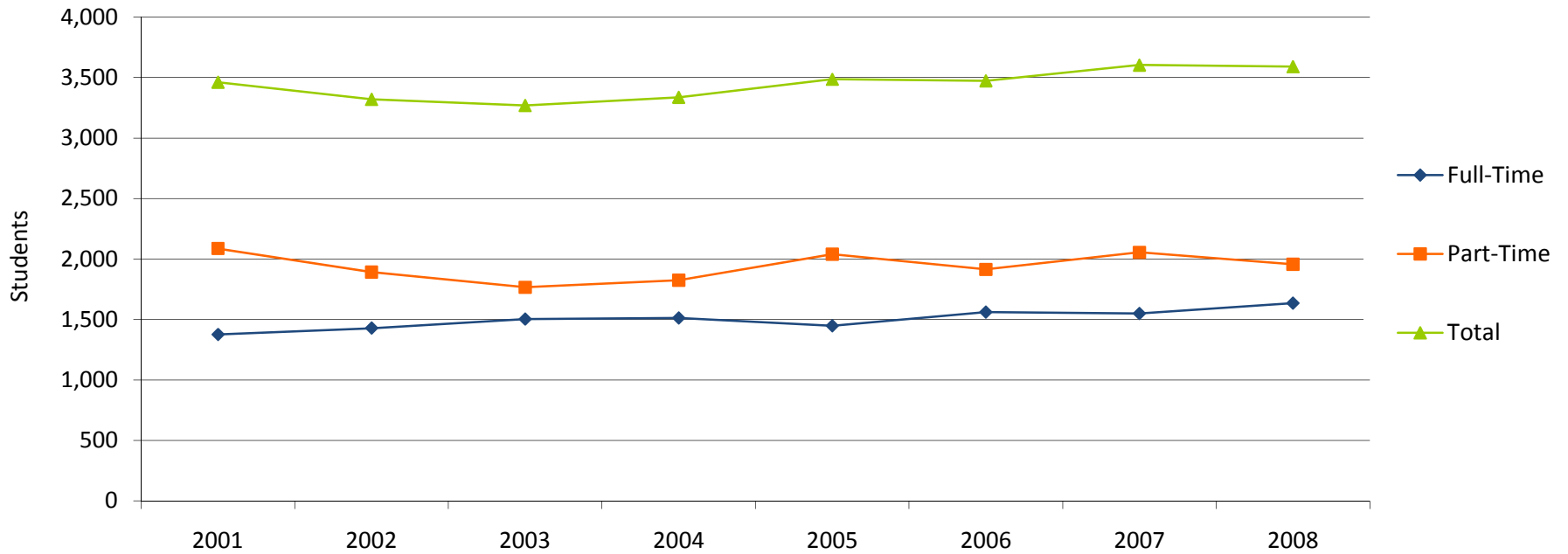
### 1.1 Fall 2008 Student Characteristics

	Freshmen	Sophomore	Other	Dual Credit/ Dual Enrolled	Dual Tech Credit	Total	% of Total
<b>Total</b>	1,771	866	256	434	264	3,591	100.0%
<b>Gender</b>							
Male	713	267	84	159	194	1,417	39.5%
Female	1,058	599	172	275	70	2,174	60.5%
<b>Enrollment Status</b>							
Full-Time	1,057	479	76	13	10	1,635	45.5%
Part-Time	714	387	180	421	254	1,956	54.5%
<b>Developmental Courses</b>							
1 course	545	97	9	0	0	651	18.1%
2 courses	90	2	0	0	0	92	2.6%
3+ courses	83	1	0	0	0	84	2.3%
<b>Location</b>							
In-District	1,065	569	184	320	130	2,268	63.2%
Out-of-District	698	294	72	114	134	1,312	36.5%
Out-of-State	7	0	0	0	0	7	0.2%
International	1	3	0	0	0	4	0.1%
Unknown	0	0	0	0	0	0	0.0%
<b>Age</b>							
< 18	78	0	0	357	193	628	17.5%
18-19	819	157	1	77	46	1,100	30.6%
20-21	246	255	42	0	6	549	15.3%
22-24	126	122	51	0	1	300	8.4%
25-29	145	113	48	0	6	312	8.7%
30-34	91	62	30	0	1	184	5.1%
35-39	79	52	32	0	3	166	4.6%
40-49	122	73	33	0	2	230	6.4%
50-64	34	25	17	0	6	82	2.3%
65 and older	31	7	2	0	0	40	1.1%
Unknown	0	0	0	0	0	0	0.0%
<b>Race/Ethnicity</b>							
American Indian/Alaska Native	8	3	0	0	0	11	0.3%
Asian/Pacific Islander	8	11	0	1	0	20	0.6%
Black, non-Hispanic	26	12	3	2	3	46	1.3%
Hispanic	25	11	3	2	2	43	1.2%
Nonresident Alien	2	1	0	0	0	3	0.1%
Race/Ethnicity Unknown	66	41	5	15	33	160	4.5%
White, non-Hispanic	1,636	787	245	414	226	3,308	92.1%

Source: Colleague Fall Census

## 1.2 Fall Credit Enrollment By Enrollment Status

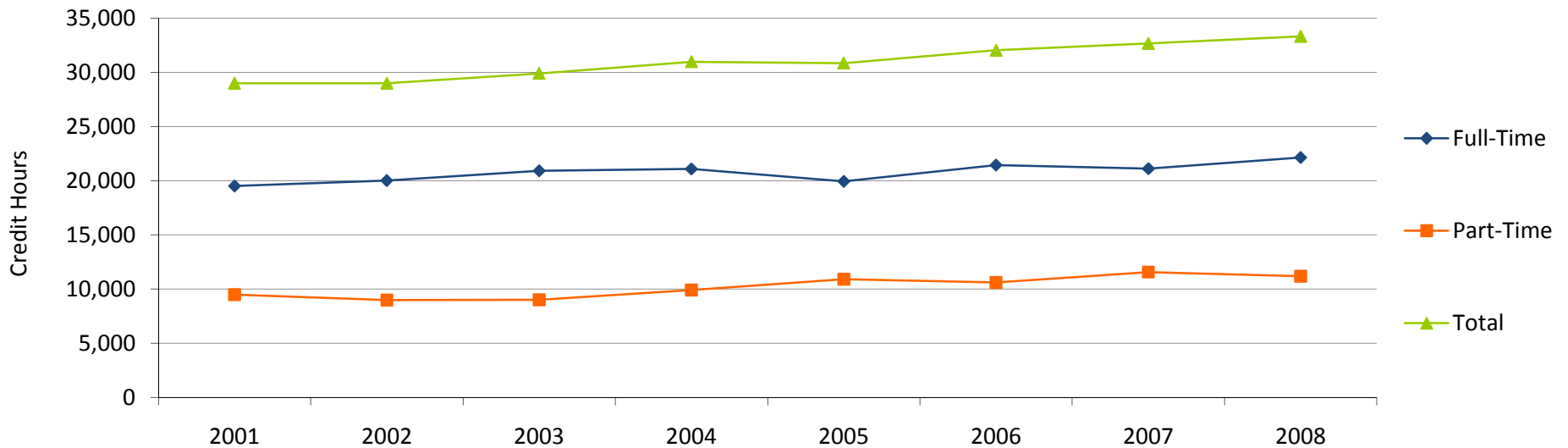
	2001	2002	2003	2004	2005	2006	2007	2008	% Change	
									2001-2008	2007-2008
<b>Total</b>	3,462	3,320	3,269	3,337	3,486	3,474	3,604	3,591	3.7%	-0.4%
<b>Headcount</b>										
Full-Time	1,375	1,428	1,503	1,512	1,447	1,560	1,549	1,635	18.9%	5.6%
Part-Time	2,087	1,892	1,766	1,825	2,039	1,914	2,055	1,956	-6.3%	-4.8%
<b>Percentages</b>										
Full-Time	39.7%	43.0%	46.0%	45.3%	41.5%	44.9%	43.0%	45.5%		
Part-Time	60.3%	57.0%	54.0%	54.7%	58.5%	55.1%	57.0%	54.5%		



Source: IPEDS

### 1.3 Fall Credit Hours

	2001	2002	2003	2004	2005	2006	2007	2008	% Change	
									2001-2008	2007-2008
Total	28,989	28,993	29,912	30,989	30,861	32,046	32,677	33,328	15.0%	2.0%
<b>Credit Hours</b>										
Full-Time	19,512	20,011	20,911	21,083	19,950	21,437	21,109	22,150	13.5%	4.9%
Part-Time	9,477	8,982	9,001	9,906	10,911	10,609	11,568	11,178	17.9%	-3.4%
<b>Percentages</b>										
Full-Time	67.3%	69.0%	69.9%	68.0%	64.6%	66.9%	64.6%	66.5%		
Part-Time	32.7%	31.0%	30.1%	32.0%	35.4%	33.1%	35.4%	33.5%		



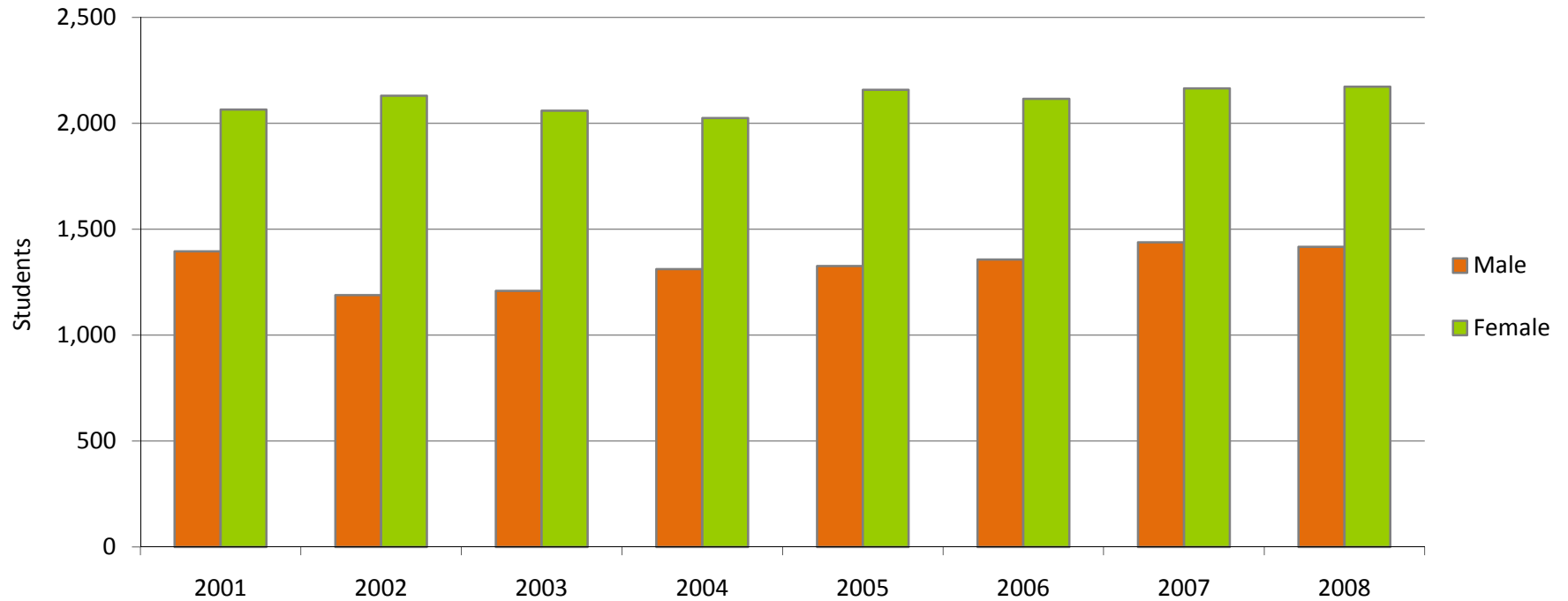
### 1.4 Fall Full-Time Equivalent (FTE) Enrollment

	2001	2002	2003	2004	2005	2006	2007	2008	% Change	
									2001-2008	2007-2008
FTE Enrollment	1,932	1,934	1,994	2,066	2,057	2,136	2,178	2,222	15.0%	2.0%

Source: DHE02, Supplement to the IPEDS EF and EMSAS

### 1.5 Fall Credit Enrollment By Gender

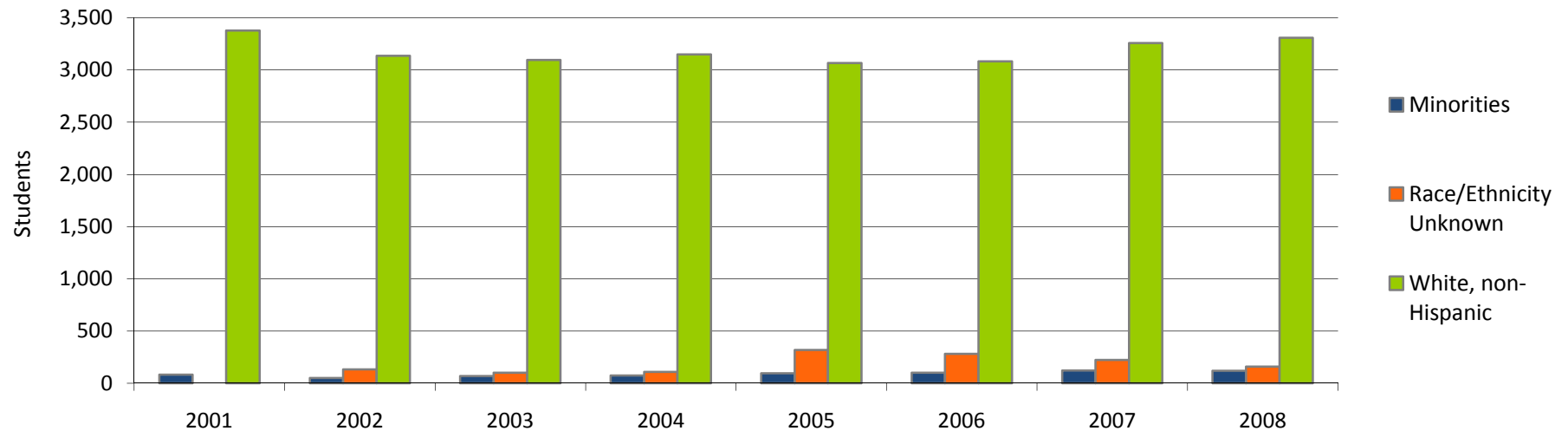
	2001	2002	2003	2004	2005	2006	2007	2008	% Change	
									2001-2008	2007-2008
Total	3,462	3,320	3,269	3,337	3,486	3,474	3,604	3,591	3.7%	-0.4%
<b>Headcount</b>										
Male	1,396	1,189	1,209	1,312	1,327	1,358	1,439	1,417	1.5%	-1.5%
Female	2,066	2,131	2,060	2,025	2,159	2,116	2,165	2,174	5.2%	0.4%
<b>Percentages</b>										
Male	40.3%	35.8%	37.0%	39.3%	38.1%	39.1%	39.9%	39.5%		
Female	59.7%	64.2%	63.0%	60.7%	61.9%	60.9%	60.1%	60.5%		



Source: IPEDS

## 1.6 Fall Credit Enrollment By Ethnicity

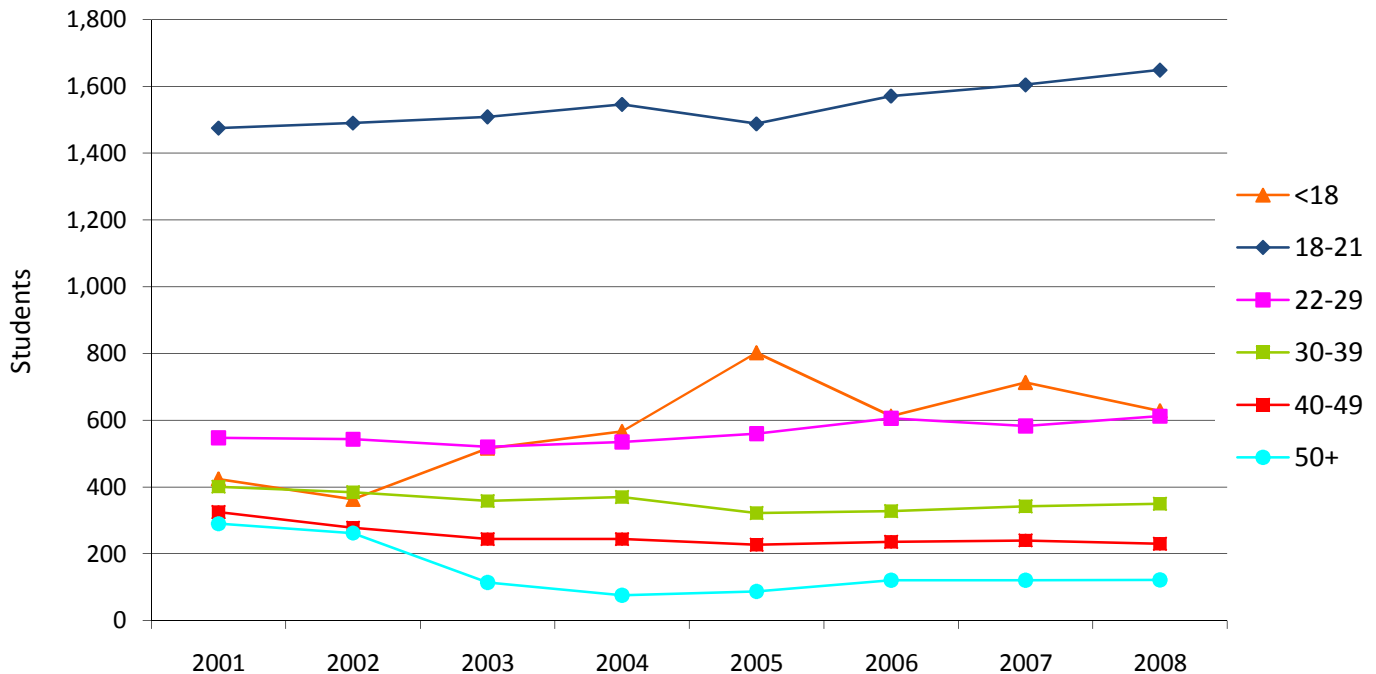
	2001	2002	2003	2004	2005	2006	2007	2008	% Change	
									2001-2008	2007-2008
Total	3,462	3,320	3,269	3,337	3,486	3,474	3,604	3,591	3.7%	3.4%
<b>Race/Ethnicity</b>										
American Indian/Alaska Native	13	5	5	10	14	13	15	11	-15.4%	-26.7%
Asian/Pacific Islander	21	10	20	22	27	24	21	20	-4.8%	-4.8%
Black, non-Hispanic	32	18	20	18	21	26	36	46	43.8%	27.8%
Hispanic	18	19	24	26	35	40	50	43	138.9%	-14.0%
Nonresident Alien	0	0	1	1	1	5	0	3	na	na
Race/Ethnicity Unknown	0	133	102	110	320	283	225	160	na	-28.9%
White, non-Hispanic	3,378	3,135	3,097	3,150	3,068	3,083	3,257	3,308	-2.1%	1.6%
<b>Percentages</b>										
American Indian/Alaska Native	0.4%	0.2%	0.2%	0.3%	0.4%	0.4%	0.4%	0.3%		
Asian/Pacific Islander	0.6%	0.3%	0.6%	0.7%	0.8%	0.7%	0.6%	0.6%		
Black, non-Hispanic	0.9%	0.5%	0.6%	0.5%	0.6%	0.7%	1.0%	1.3%		
Hispanic	0.5%	0.6%	0.7%	0.8%	1.0%	1.2%	1.4%	1.2%		
Nonresident Alien	0.0%	0.0%	0.0%	0.0%	0.0%	0.1%	0.0%	0.1%		
Race/Ethnicity Unknown	0.0%	4.0%	3.1%	3.3%	9.2%	8.1%	6.2%	4.5%		
White, non-Hispanic	97.6%	94.4%	94.7%	94.4%	88.0%	88.7%	90.4%	92.1%		



Source: IPEDS

## 1.7 Fall Credit Enrollment by Age

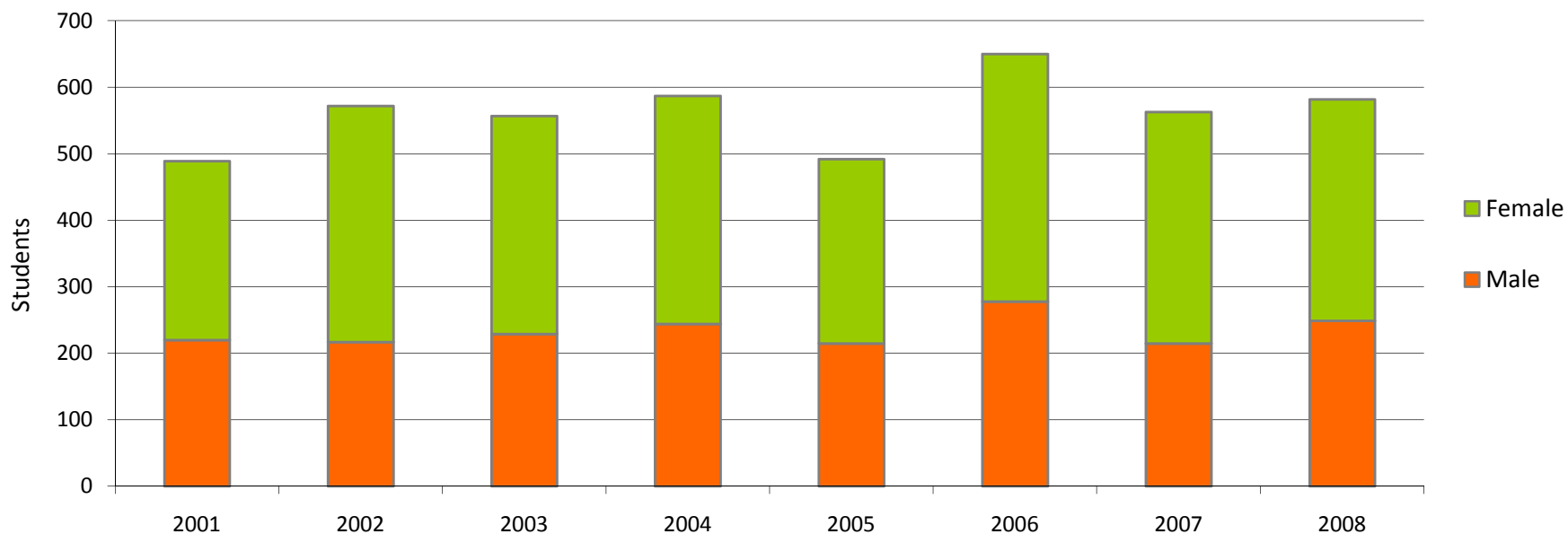
									% Change	
	2001	2002	2003	2004	2005	2006	2007	2008	2001-2008	2007-2008
Total	3,462	3,320	3,269	3,337	3,486	3,474	3,604	3,591	3.7%	-0.4%
<b>Age Category</b>										
<18	424	363	516	566	802	612	713	628	48.1%	-11.9%
18-19	966	1,001	1,006	1,052	1,019	1,078	1,098	1,100	13.9%	0.2%
20-21	509	489	503	494	469	493	507	549	7.9%	8.3%
22-24	265	281	274	293	301	306	278	300	13.2%	7.9%
25-29	282	262	246	242	259	300	305	312	10.6%	2.3%
30-34	203	188	182	211	187	186	188	184	-9.4%	-2.1%
35-39	198	196	176	159	135	142	154	166	-16.2%	7.8%
40-49	325	278	244	244	227	236	240	230	-29.2%	-4.2%
50-64	142	111	70	56	65	83	79	82	-42.3%	3.8%
65 and older	148	151	44	20	22	38	42	40	-73.0%	-4.8%
Unknown	0	0	8	0	0	0	0	0	na	na
<b>Percentages</b>										
<18	12.2%	10.9%	15.8%	17.0%	23.0%	17.6%	19.8%	17.5%		
18-19	27.9%	30.2%	30.8%	31.5%	29.2%	31.0%	30.5%	30.6%		
20-21	14.7%	14.7%	15.4%	14.8%	13.5%	14.2%	14.1%	15.3%		
22-24	7.7%	8.5%	8.4%	8.8%	8.6%	8.8%	7.7%	8.4%		
25-29	8.1%	7.9%	7.5%	7.3%	7.4%	8.6%	8.5%	8.7%		
30-34	5.9%	5.7%	5.6%	6.3%	5.4%	5.4%	5.2%	5.1%		
35-39	5.7%	5.9%	5.4%	4.8%	3.9%	4.1%	4.3%	4.6%		
40-49	9.4%	8.4%	7.5%	7.3%	6.5%	6.8%	6.7%	6.4%		
50-64	4.1%	3.3%	2.1%	1.7%	1.9%	2.4%	2.2%	2.3%		
65 and older	4.3%	4.5%	1.3%	0.6%	0.6%	1.1%	1.2%	1.1%		
Unknown	0.0%	0.0%	0.2%	0.0%	0.0%	0.0%	0.0%	0.0%		



Source: IPEDS

### 1.8 Fall Credit Enrollment By Full-Time, First-Time, Degree/Certificate-Seeking Students

	2001	2002	2003	2004	2005	2006	2007	2008	% Change	
									2001-2008	2007-2008
<b>Total*</b>	489	572	557	587	492	650	563	582	19.0%	3.4%
<b>Headcount</b>										
Male	220	217	229	244	215	278	215	249	13.2%	15.8%
Female	269	355	328	343	277	372	348	333	23.8%	-4.3%
<b>Percentages</b>										
Male	45.0%	37.9%	41.1%	41.6%	43.7%	42.8%	38.2%	42.8%		
Female	55.0%	62.1%	58.9%	58.4%	56.3%	57.2%	61.8%	57.2%		

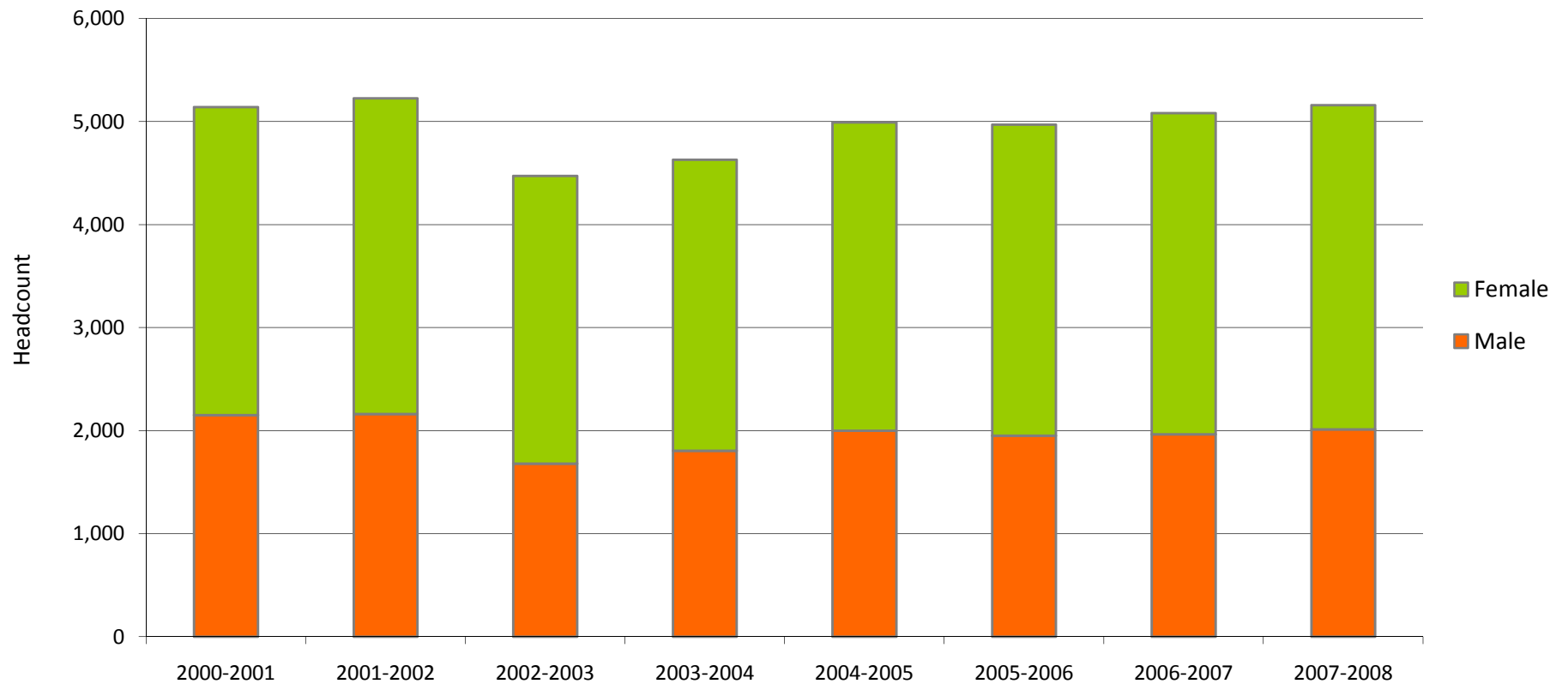


Source: IPEDS

\* Represents the IPEDS Graduation Rate Survey cohort

## 1.9 Twelve-Month\* Unduplicated Headcount

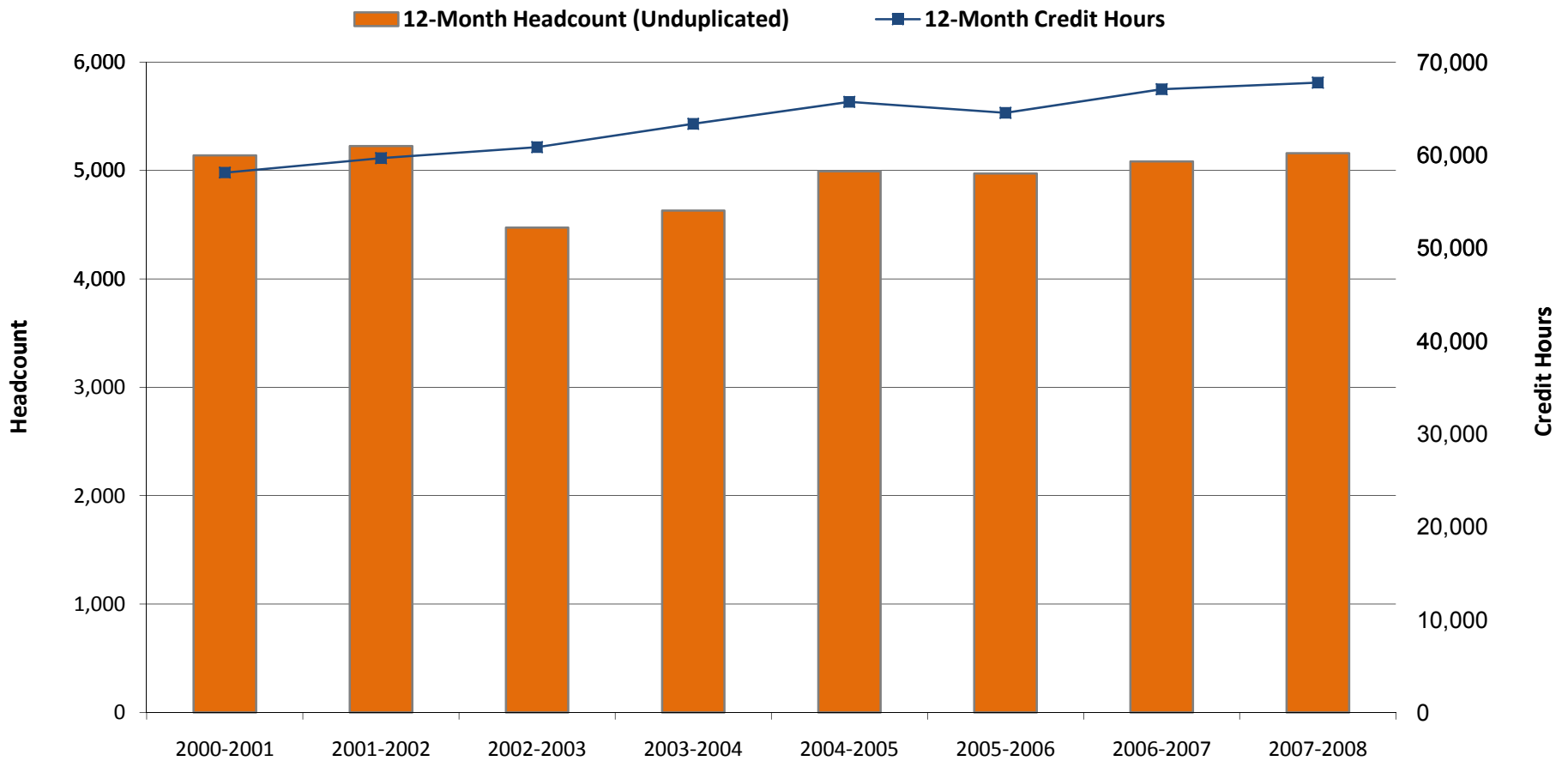
									% Change	
	2000-2001	2001-2002	2002-2003	2003-2004	2004-2005	2005-2006	2006-2007	2007-2008	2000-2001 to 2007-2008	2006-2007 to 2007-2008
Total	5,140	5,225	4,473	4,629	4,992	4,971	5,083	5,160	0.4%	1.5%
<b>Headcount</b>										
Male	2,151	2,163	1,680	1,805	1,999	1,951	1,966	2,014	-6.4%	2.4%
Female	2,989	3,062	2,793	2,824	2,993	3,020	3,117	3,146	5.3%	0.9%



Source: IPEDS  
\* July 1 - June 30

### 1.10 Twelve-Month\* Credit Hours & Full-Time Equivalent (FTE) Enrollment

									% Change	
	2000-2001	2001-2002	2002-2003	2003-2004	2004-2005	2005-2006	2006-2007	2007-2008	2000-2001 to 2007-2008	2006-2007 to 2007-2008
Credit Hours	58,104	59,658	60,831	63,347	65,715	64,532	67,072	67,794	16.7%	1.1%
FTE	1,937	1,989	2,028	2,112	2,191	2,151	2,236	2,260	16.7%	1.1%

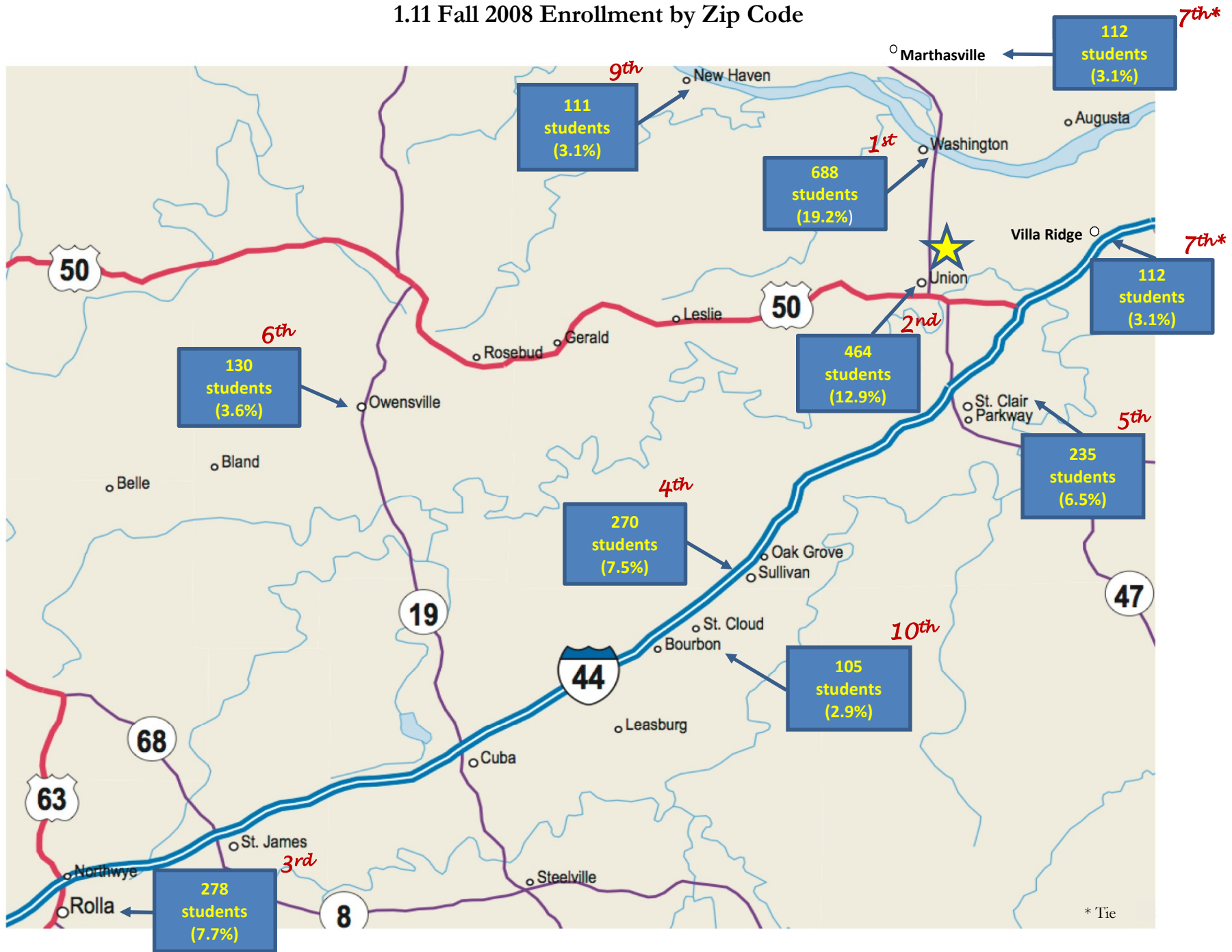


Source: IPEDS

\* July 1 - June 30

Note: FTE for twelve-month instructional activity = twelve-month credit hours/30

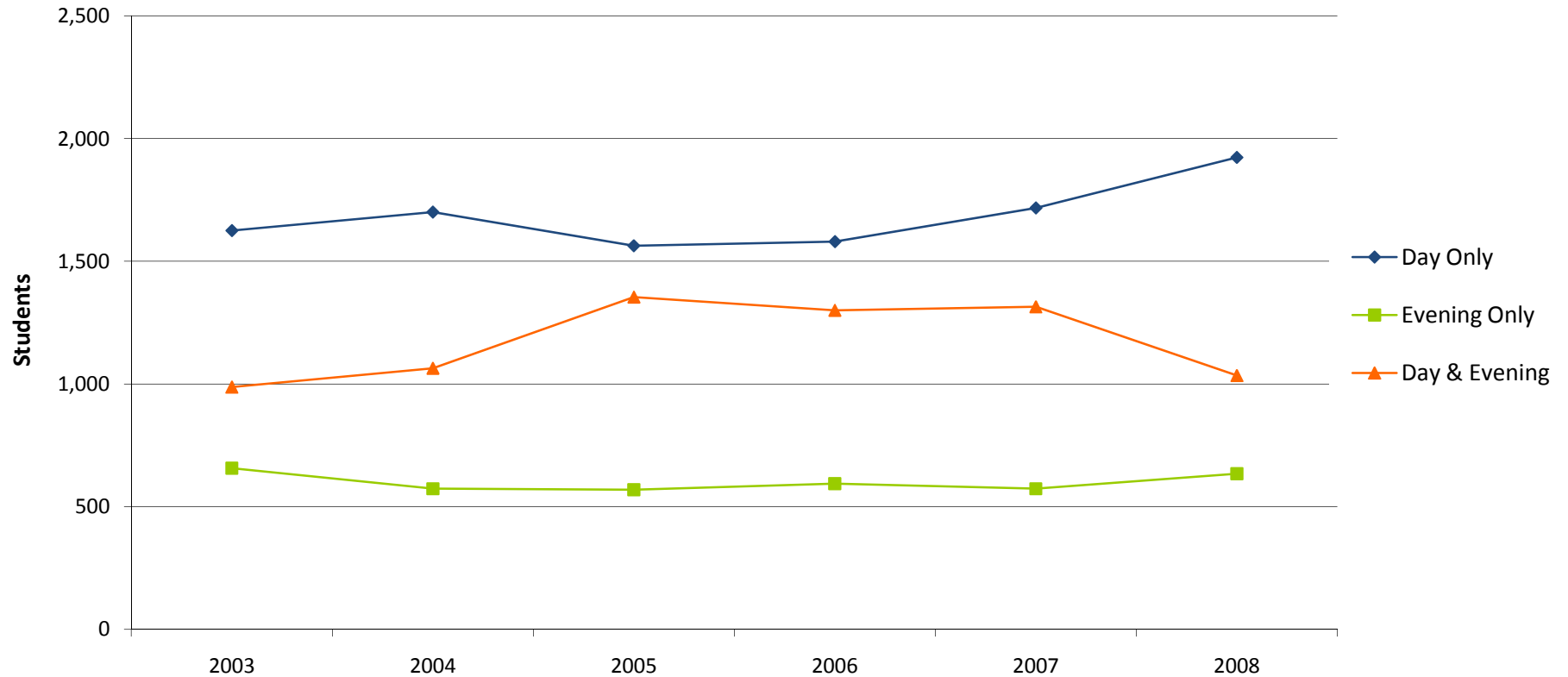
### 1.11 Fall 2008 Enrollment by Zip Code



Note: Percentages are based on total fall enrollment

### 1.12 Fall Enrollment by Day & Evening Students

	2003	2004	2005	2006	2007	2008	% Change	
							2003-2008	2007-2008
Total	3,269	3,337	3,486	3,474	3,604	3,591	9.9%	-0.4%
<b>Course Time(s)</b>								
Day Only	1,625	1,700	1,563	1,580	1,717	1,923	18.3%	12.0%
Evening Only	657	573	569	594	573	634	-3.5%	10.6%
Day & Evening	987	1,064	1,354	1,300	1,314	1,034	4.8%	-21.3%



Source: Colleague