

10.1 Fall Continuing Education Student Characteristics

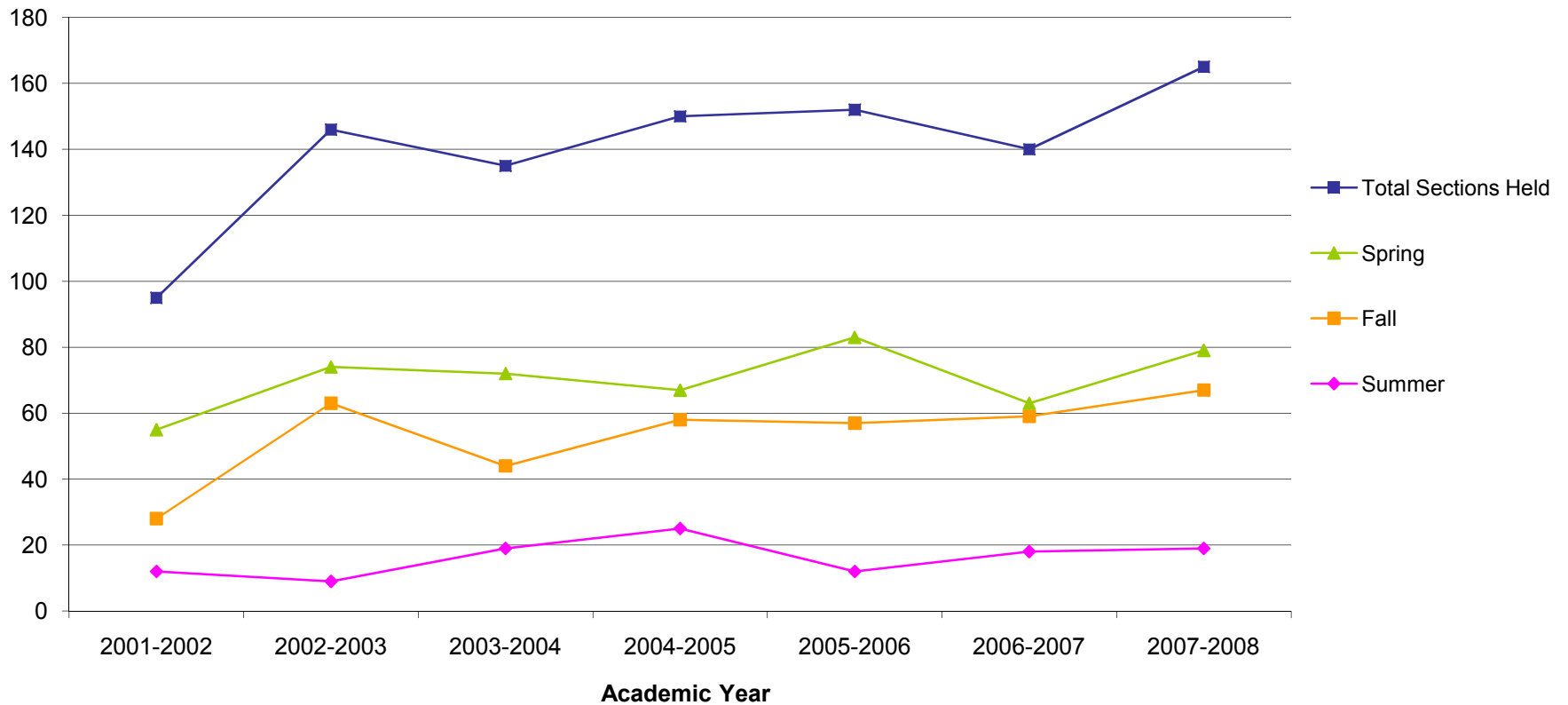
	Fall 2002	Fall 2003	Fall 2004	Fall 2005	Fall 2006	Fall 2007	Fall 2008
Total	404	378	262	372	283	352	247
Gender							
Male	154	115	95	131	104	109	86
Female	250	263	167	241	179	243	161
Enrollment Status (based on credit-bearing courses)							
Full-Time	9	24	15	11	11	8	0
Part-Time	395	354	247	361	272	344	247
Location							
In-District	284	275	184	298	205	264	199
Out-of-District	119	102	77	72	77	87	45
Out-of-State	1	0	0	2	0	0	0
International	0	0	0	0	0	0	0
Other	0	1	1	0	1	1	3
Age							
< 18	24	30	21	29	64	75	73
18-19	7	7	2	4	2	8	2
20-21	5	21	8	10	8	5	1
22-24	15	15	5	17	8	4	7
25-29	25	14	12	16	13	12	8
30-34	22	15	8	18	8	16	6
35-39	35	17	13	18	11	15	12
40-49	78	78	44	69	53	62	42
50-64	74	69	58	112	71	100	54
65 and older	72	59	46	74	34	47	33
Unknown	47	53	45	5	11	8	9
Race/Ethnicity							
American Indian/Alaska Native	0	1	0	0	2	0	0
Asian/Pacific Islander	0	1	0	0	0	1	0
Black, non-Hispanic	0	0	0	1	1	0	1
Hispanic	0	1	0	0	0	1	0
Nonresident Alien	0	0	0	0	0	0	0
Race/Ethnicity Unknown	142	123	105	153	125	189	154
White, non-Hispanic	262	252	157	218	155	161	92

Source: Colleague

Note: Data are based on end of fall term continuing education students.

10.2 Continuing Education Sections by Term

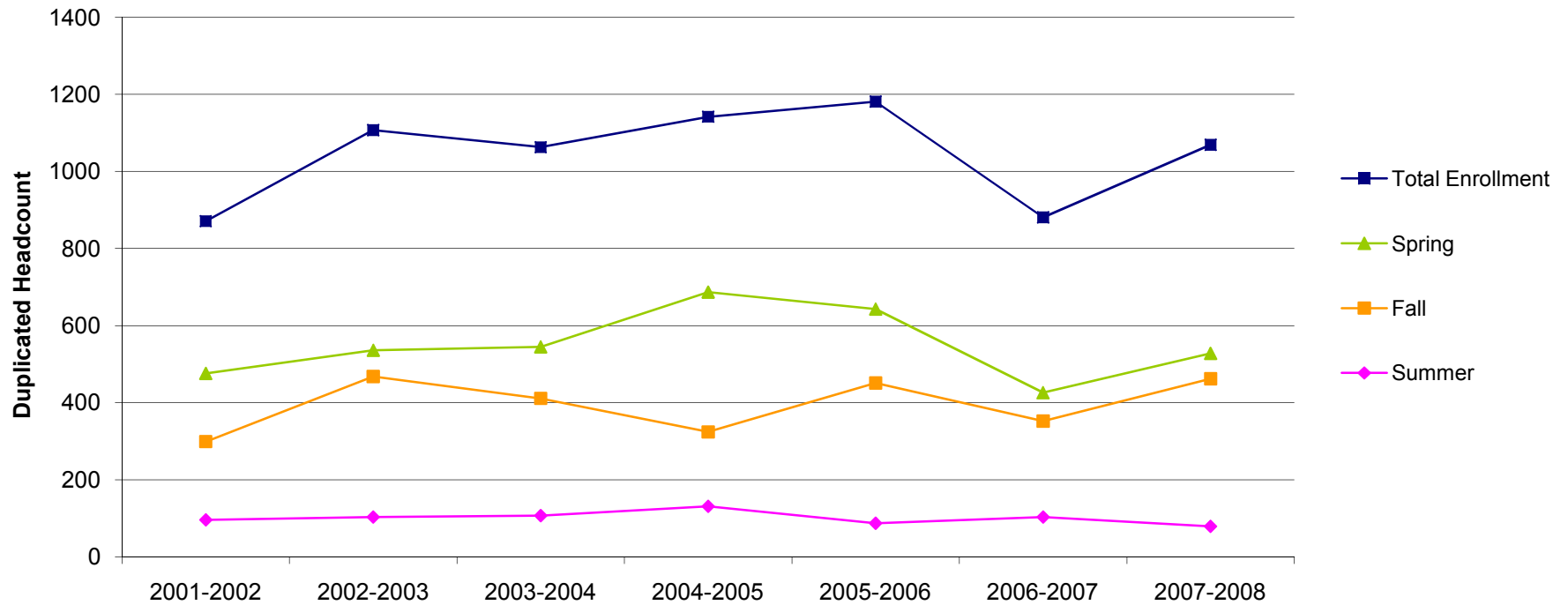
								% Change	
	2001-2002	2002-2003	2003-2004	2004-2005	2005-2006	2006-2007	2007-2008	2001-2002 to 2007-2008	2005-2006 to 2007-2008
Total Sections Held	95	146	135	150	152	140	165	73.7%	17.9%
Summer	12	9	19	25	12	18	19	58.3%	5.6%
Fall	28	63	44	58	57	59	67	139.3%	13.6%
Spring	55	74	72	67	83	63	79	43.6%	25.4%



Source: Colleague (end of term data)

10.3 Continuing Education Enrollment

								% Change	
	2001-2002	2002-2003	2003-2004	2004-2005	2005-2006	2006-2007	2007-2008	2001-2002 to 2006-2007	2005-2006 to 2006-2007
Total Enrollment (duplicated)	871	1107	1063	1142	1181	881	1069	22.7%	-9.5%
Summer	96	103	107	131	87	103	79	-17.7%	-9.2%
Fall	299	468	411	324	451	352	462	54.5%	2.4%
Spring	476	536	545	687	643	426	528	10.9%	-17.9%
Total Students (unduplicated)	721	941	848	819	872	662	724	0.4%	-17.0%
Summer	79	102	100	120	85	98	76	-3.8%	-10.6%
Fall	271	404	378	262	372	283	352	29.9%	-5.4%
Spring	417	472	449	545	512	365	418	0.2%	-18.4%



Source: Colleague (end of term data)