
Main Campus

4.1 Fall 2008 Main Campus Student Characteristics

	Freshmen	Sophomore	Other	Total	% of Total
Total	1,265	665	215	2,145	100.0%
Gender					
Male	541	214	73	828	38.6%
Female	724	451	142	1,317	61.4%
Enrollment Status					
Full-Time	867	400	68	1,335	62.2%
Part-Time	398	265	147	810	37.8%
Developmental Courses					
1 Course	341	73	9	423	19.7%
2 Courses	106	3	0	109	5.1%
3+ Courses	120	5	0	125	5.8%
Location					
In-District	927	511	166	1,604	74.8%
Out-of-District	331	151	49	531	24.8%
Out-of-State	7	0	0	7	0.3%
International	0	3	0	3	0.1%
Other	0	0	0	0	0.0%
Age					
<18	33	0	0	33	1.5%
18-19	643	134	1	778	36.3%
20-21	175	211	36	422	19.7%
22-24	94	91	46	231	10.8%
25-29	88	78	40	206	9.6%
30-34	61	43	25	129	6.0%
35-39	46	35	26	107	5.0%
40-49	70	47	27	144	6.7%
50-64	25	21	12	58	2.7%
65 and older	30	5	2	37	1.7%
Unknown	0	0	0	0	0.0%
Race/Ethnicity					
American Indian/Alaska Native	2	1	0	3	0.1%
Asian/Pacific Islander	4	7	0	11	0.5%
Black, non-Hispanic	21	8	3	32	1.5%
Hispanic	22	8	2	32	1.5%
Nonresident Alien	1	1	0	2	0.1%
Race/Ethnicity Unknown	49	36	4	89	4.1%
White, non-Hispanic	1,166	604	206	1,976	92.1%

Source: Colleague Census Data

Notes:

(1)Includes students enrolled in any credit bearing course located on the Main Campus (includes Main Campus ITV)

(2)Developmental coursework is for any ECC campus

4.2 Main Campus Headcount, Credit Hours & FTE by Academic Year

AY 2007-2008

	07/SU	07/FA	08/SP	AY Totals	
Headcount	690	2,076	1,985	Headcount (duplicated)	4,751
Credit Hours	2,807.00	20,147.50	18,780.00	Headcount (unduplicated)	2,877
FTE	468	1,343	1,252	Credit Hours	41,734.50
				Annual FTE	1,391

AY 2006-2007

	06/SU	06/FA	07/SP	AY Totals	
Headcount	717	2,130	2,012	Headcount (duplicated)	4,859
Credit Hours	2,993.50	20,348.50	19,111.00	Headcount (unduplicated)	2,897
FTE	499	1,357	1,274	Credit Hours	42,453.00
				Annual FTE	1,415

AY 2005-2006

	05/SU	05/FA	06/SP	AY Totals	
Headcount	773	2,036	1,899	Headcount (duplicated)	4,708
Credit Hours	3,230.50	19,937.00	18,282.50	Headcount (unduplicated)	2,825
FTE	538	1,329	1,219	Credit Hours	41,450.00
				Annual FTE	1,382

AY 2004-2005

	04/SU	04/FA	05/SP	AY Totals	
Headcount	722	2,085	1,920	Headcount (duplicated)	4,727
Credit Hours	3,086.50	21,081.00	18,822.50	Headcount (unduplicated)	2,814
FTE	514	1,405	1,255	Credit Hours	42,990.00
				Annual FTE	1,433

AY 2003-2004

	03/SU	03/FA	04/SP	AY Totals	
Headcount	780	2,094	1,943	Headcount (duplicated)	4,817
Credit Hours	3,216.50	20,868.00	19,134.50	Headcount (unduplicated)	2,893
FTE	536	1,391	1,276	Credit Hours	43,219.00
				Annual FTE	1,441

AY 2002-2003

	02/SU	02/FA	03/SP	AY Totals	
Headcount	856	2,204	1,944	Headcount (duplicated)	5,004
Credit Hours	3,705.00	21,769.50	19,154.00	Headcount (unduplicated)	3,057
FTE	618	1,451	1,277	Credit Hours	44,628.50
				Annual FTE	1,488

Notes:

(1) All data includes students who completed a course on the Main Campus (including ITV) with a verified grade.

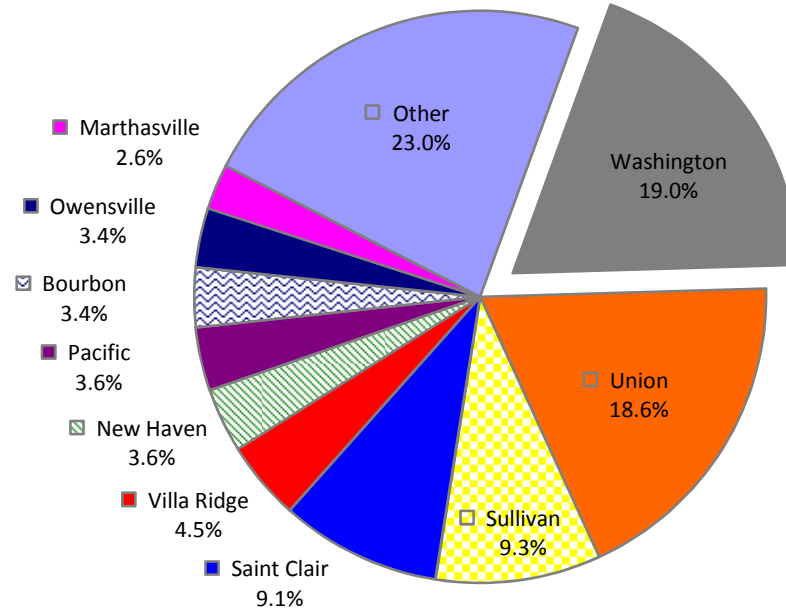
(2) FTE (Full-Time Equivalent): Fall and Spring = total semester hours divided by 15

 Summer = total semester hours divided by 6

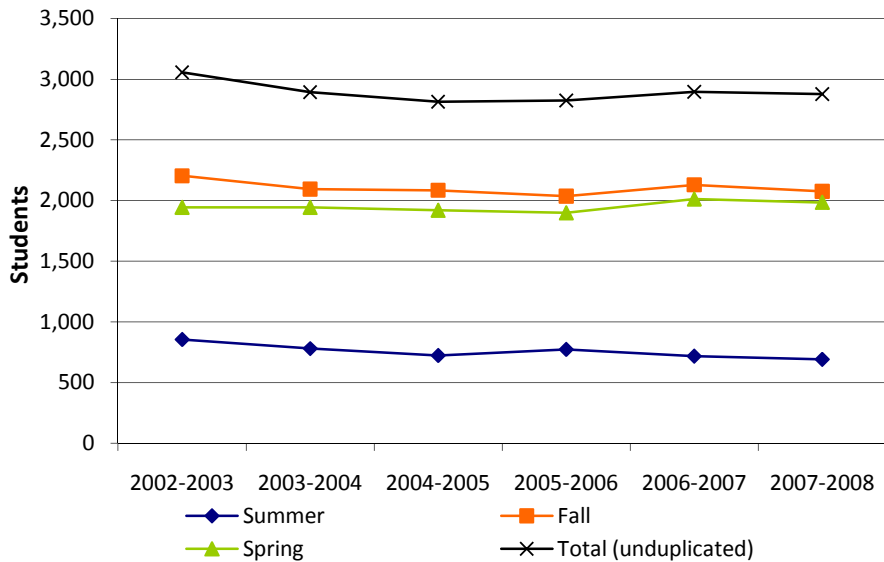
 Annual = total academic year hours divided by 30

4.3 Main Campus Enrollment Summary

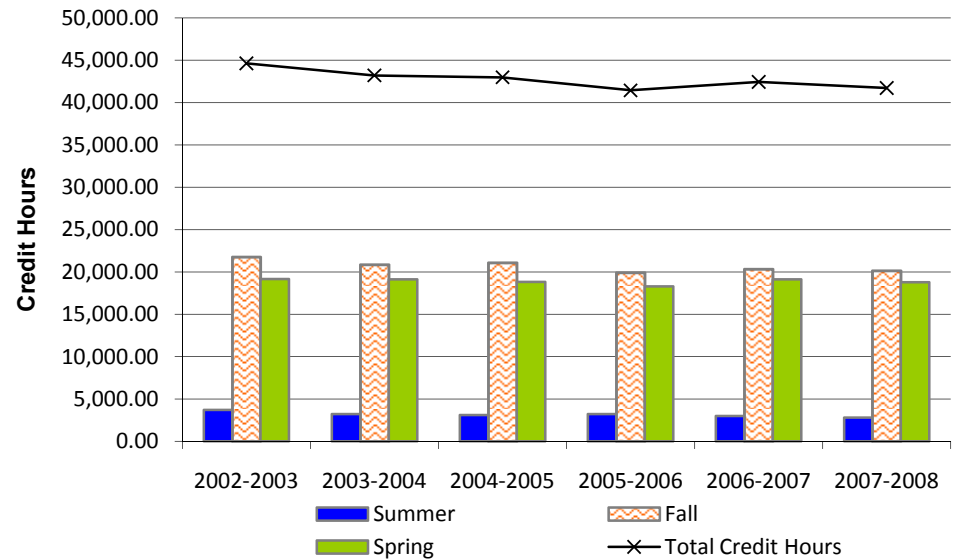
Top Zip Code Locations for Main Campus Students in Fall 2008



Main Campus Enrollment



Main Campus Credit Hours



Four Rivers

4.4 Fall 2008 Four Rivers Student Characteristics

	Freshmen	Sophomore	Other	Total	% of Total
Total	144	63	12	219	100.0%
Gender					
Male	95	37	7	139	63.5%
Female	49	26	5	80	36.5%
Enrollment Status					
Full-Time	77	33	7	117	53.4%
Part-Time	67	30	5	102	46.6%
Developmental Courses					
1 Course	32	10	1	43	19.6%
2 Courses	6	0	0	6	2.7%
3+ Courses	5	0	0	5	2.3%
Location					
In-District	113	53	10	176	80.4%
Out-of-District	31	10	2	43	19.6%
Out-of-State	0	0	0	0	0.0%
International	0	0	0	0	0.0%
Other	0	0	0	0	0.0%
Age					
<18	4	0	0	4	1.8%
18-19	41	9	0	50	22.8%
20-21	22	17	5	44	20.1%
22-24	12	10	1	23	10.5%
25-29	16	7	1	24	11.0%
30-34	14	6	1	21	9.6%
35-39	9	4	2	15	6.8%
40-49	20	10	1	31	14.2%
50-64	6	0	1	7	3.2%
65 and older	0	0	0	0	0.0%
Unknown	0	0	0	0	0.0%
Race/Ethnicity					
American Indian/Alaska Native	0	1	0	1	0.5%
Asian/Pacific Islander	0	0	0	0	0.0%
Black, non-Hispanic	1	0	0	1	0.5%
Hispanic	1	1	0	2	0.9%
Nonresident Alien	0	0	0	0	0.0%
Race/Ethnicity Unknown	9	1	0	10	4.6%
White, non-Hispanic	133	60	12	205	93.6%

Source: Colleague Census Data

Notes:

(1)Includes students enrolled in any credit bearing course located on the Four Rivers campus (includes Four Rivers ITV)

(2)Developmental coursework is for any ECC campus

4.5 Four Rivers Headcount, Credit Hours & FTE by Academic Year

AY 2007-2008

	07/SU	07/FA	08/SP	AY Totals	
Headcount	1	233	188	Headcount (duplicated)	422
Credit Hours	3.00	1,045.00	813.00	Headcount (unduplicated)	344
FTE	1	70	54	Credit Hours	1,861.00
				Annual FTE	62

AY 2006-2007

	06/SU	06/FA	07/SP	AY Totals	
Headcount	23	260	206	Headcount (duplicated)	489
Credit Hours	69.00	1,316.00	1,010.00	Headcount (unduplicated)	384
FTE	12	88	67	Credit Hours	2,395.00
				Annual FTE	80

AY 2005-2006

	05/SU	05/FA	06/SP	AY Totals	
Headcount	3	161	192	Headcount (duplicated)	356
Credit Hours	9.00	895.00	1,005.00	Headcount (unduplicated)	279
FTE	2	60	67	Credit Hours	1,909.00
				Annual FTE	64

AY 2004-2005

	04/SU	04/FA	05/SP	AY Totals	
Headcount	9	180	201	Headcount (duplicated)	390
Credit Hours	27.00	871.00	994.00	Headcount (unduplicated)	295
FTE	5	58	66	Credit Hours	1,892.00
				Annual FTE	63

AY 2003-2004

	03/SU	03/FA	04/SP	AY Totals	
Headcount	9	179	215	Headcount (duplicated)	403
Credit Hours	27.00	881.00	1,084.00	Headcount (unduplicated)	316
FTE	5	59	72	Credit Hours	1,992.00
				Annual FTE	66

AY 2002-2003

	02/SU	02/FA	03/SP	AY Totals	
Headcount	12	128	235	Headcount (duplicated)	375
Credit Hours	38.00	675.00	1,097.00	Headcount (unduplicated)	285
FTE	6	45	73	Credit Hours	1,810.00
				Annual FTE	60

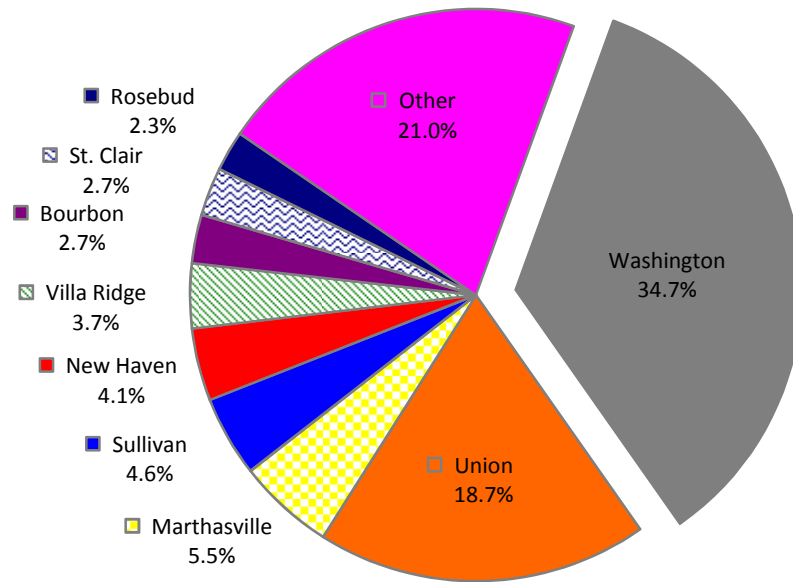
Notes:

(1) All data includes students who completed a course on the Four Rivers campus (including ITV) with a verified grade.

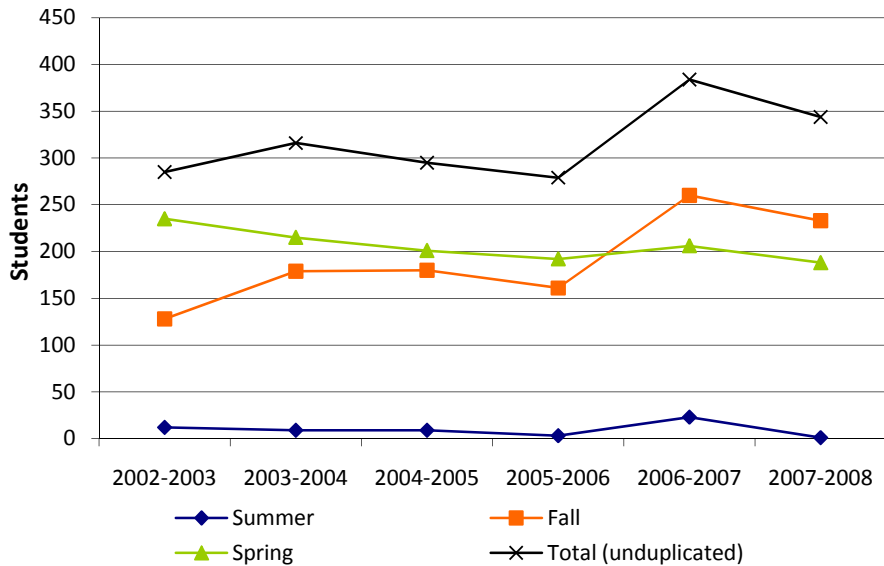
(2) FTE (Full-Time Equivalent):
 Fall and Spring = total semester hours divided by 15
 Summer = total semester hours divided by 6
 Annual = total academic year hours divided by 30

4.6 Four Rivers Enrollment Summary

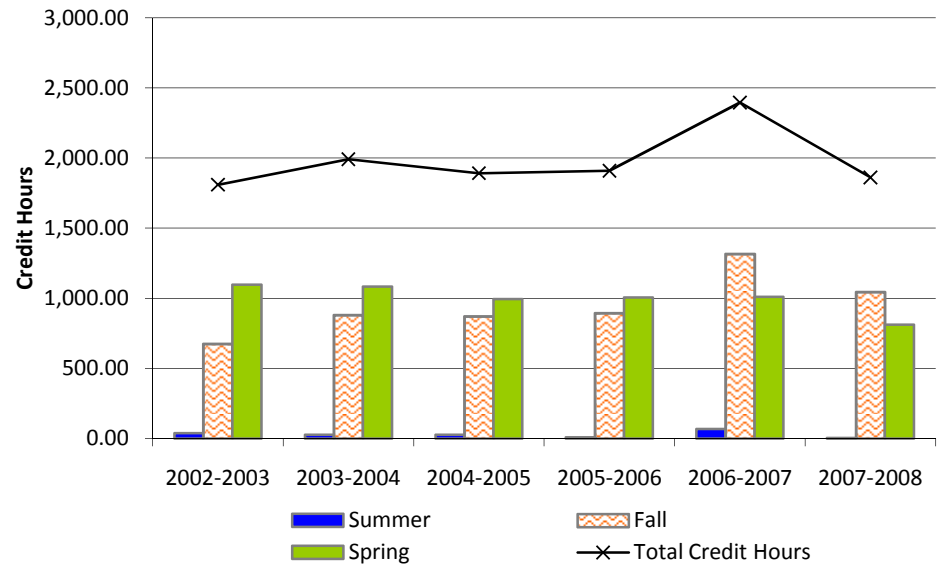
**Top Zip Code Locations for
Four Rivers Students in Fall 2008**



Four Rivers Enrollment



Four Rivers Credit Hours



Rolla

4.7 Fall 2008 Rolla Student Characteristics

	Freshmen	Sophomore	Other	Total	% of Total
Total	335	166	23	524	100.0%
Gender					
Male	87	34	5	126	24.0%
Female	248	132	18	398	76.0%
Enrollment Status					
Full-Time	176	85	12	273	52.1%
Part-Time	159	81	11	251	47.9%
Developmental Courses					
1 Course	108	19	1	128	24.4%
2 Courses	38	5	0	43	8.2%
3+ Courses	25	2	0	27	5.2%
Location					
In-District	12	27	6	45	8.6%
Out-of-District	322	138	17	477	91.0%
Out-of-State	0	0	0	0	0.0%
International	1	1	0	2	0.4%
Other	0	0	0	0	0.0%
Age					
<18	8	0	0	8	1.5%
18-19	146	24	0	170	32.4%
20-21	53	46	4	103	19.7%
22-24	23	29	5	57	10.9%
25-29	38	30	6	74	14.1%
30-34	16	10	3	29	5.5%
35-39	22	12	1	35	6.7%
40-49	28	12	2	42	8.0%
50-64	1	2	2	5	1.0%
65 and older	0	1	0	1	0.2%
Unknown	0	0	0	0	0.0%
Race/Ethnicity					
American Indian/Alaska Native	6	2	0	8	1.5%
Asian/Pacific Islander	4	4	0	8	1.5%
Black, non-Hispanic	3	4	0	7	1.3%
Hispanic	4	3	1	8	1.5%
Nonresident Alien	1	0	0	1	0.2%
Race/Ethnicity Unknown	8	3	1	12	2.3%
White, non-Hispanic	309	150	21	480	91.6%

Source: Colleague Census Data

Notes:

- (1)Includes students enrolled in any credit bearing course located on the Rolla campus (includes Rolla ITV)
- (2)Developmental coursework is for any ECC campus

4.8 Rolla Headcount, Credit Hours & FTE by Academic Year

AY 2007-2008

	07/SU	07/FA	08/SP	AY Totals	
Headcount	150	488	460	Headcount (duplicated)	1,098
Credit Hours	673.00	4,383.00	4,191.00	Headcount (unduplicated)	728
FTE	112	292	279	Credit Hours	9,247.00
				Annual FTE	308

AY 2006-2007

	06/SU	06/FA	07/SP	AY Totals	
Headcount	177	421	362	Headcount (duplicated)	960
Credit Hours	857.00	3,810.00	3,276.00	Headcount (unduplicated)	643
FTE	143	254	218	Credit Hours	7,943.00
				Annual FTE	265

AY 2005-2006

	05/SU	05/FA	06/SP	AY Totals	
Headcount	169	398	349	Headcount (duplicated)	916
Credit Hours	878.00	3,489.00	3,017.00	Headcount (unduplicated)	603
FTE	146	233	201	Credit Hours	7,384.00
				Annual FTE	246

AY 2004-2005

	04/SU	04/FA	05/SP	AY Totals	
Headcount	135	434	407	Headcount (duplicated)	976
Credit Hours	674.00	3,690.00	3,418.50	Headcount (unduplicated)	644
FTE	112	246	228	Credit Hours	7,782.50
				Annual FTE	259

AY 2003-2004

	03/SU	03/FA	04/SP	AY Totals	
Headcount	143	435	345	Headcount (duplicated)	923
Credit Hours	721.00	3,742.00	3,028.00	Headcount (unduplicated)	602
FTE	120	249	202	Credit Hours	7,491.00
				Annual FTE	250

AY 2002-2003

	02/SU	02/FA	03/SP	AY Totals	
Headcount	109	374	326	Headcount (duplicated)	809
Credit Hours	473.00	2,952.00	2,739.50	Headcount (unduplicated)	545
FTE	79	197	183	Credit Hours	6,164.50
				Annual FTE	205

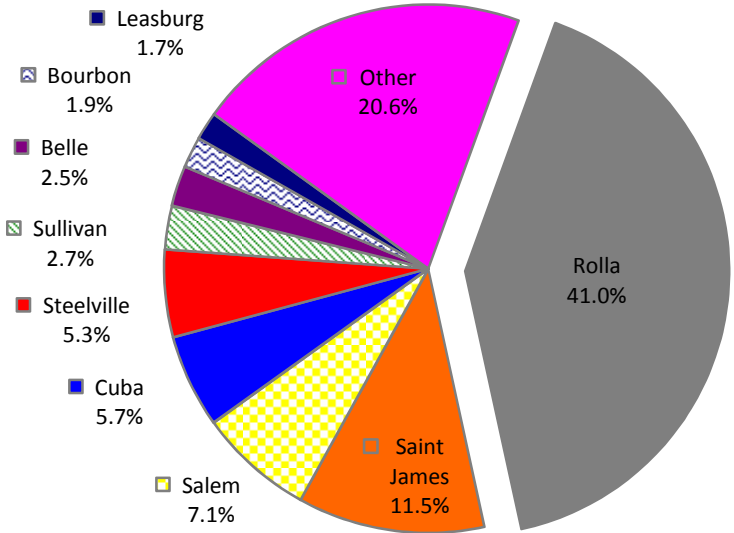
Notes:

(1) All data includes students who completed a course on the Rolla campus (including ITV) with a verified grade.

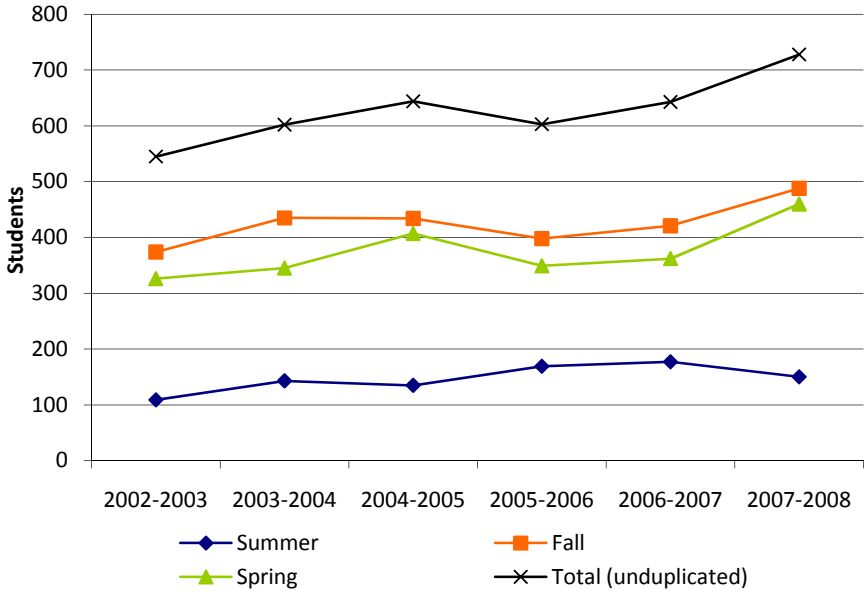
(2) FTE (Full-Time Equivalent):
 Fall and Spring = total semester hours divided by 15
 Summer = total semester hours divided by 6
 Annual = total academic year hours divided by 30

4.9 Rolla Enrollment Summary

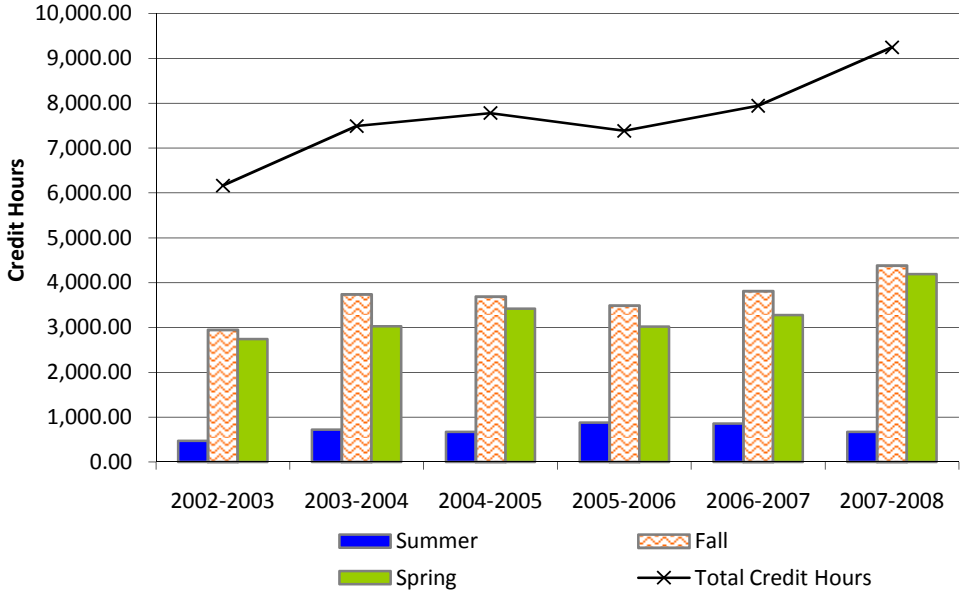
Top Zip Code Locations for Rolla Students in Fall 2008



Rolla Enrollment



Rolla Credit Hours



Southwest Area Center

4.10 Fall 2008 Southwest Area Center (SAC) Student Characteristics

	Freshmen	Sophomore	Other	Total	% of Total
Total	127	60	12	199	100.0%
Gender					
Male	40	17	4	61	30.7%
Female	87	43	8	138	69.3%
Enrollment Status					
Full-Time	64	39	7	110	55.3%
Part-Time	63	21	5	89	44.7%
Developmental Courses					
1 Course	49	7	1	57	28.6%
2 Courses	14	1	0	15	7.5%
3+ Courses	8	1	0	9	4.5%
Location					
In-District	99	51	10	160	80.4%
Out-of-District	28	9	2	39	19.6%
Out-of-State	0	0	0	0	0.0%
International	0	0	0	0	0.0%
Other	0	0	0	0	0.0%
Age					
<18	4	0	0	4	2.0%
18-19	46	8	0	54	27.1%
20-21	20	18	1	39	19.6%
22-24	13	4	2	19	9.5%
25-29	15	9	4	28	14.1%
30-34	11	6	2	19	9.5%
35-39	6	6	0	12	6.0%
40-49	8	6	2	16	8.0%
50-64	3	1	1	5	2.5%
65 and older	1	2	0	3	1.5%
Unknown	0	0	0	0	0.0%
Race/Ethnicity					
American Indian/Alaska Native	0	0	0	0	0.0%
Asian/Pacific Islander	0	0	0	0	0.0%
Black, non-Hispanic	1	0	0	1	0.5%
Hispanic	1	2	0	3	1.5%
Nonresident Alien	0	0	0	0	0.0%
Race/Ethnicity Unknown	6	7	0	13	6.5%
White, non-Hispanic	119	51	12	182	91.5%

Source: Colleague Census Data

Notes:

(1)Includes students enrolled in any credit bearing course located on the SAC campus (includes SAC ITV)

(2)Developmental coursework is for any ECC campus

4.11 SAC Headcount, Credit Hours & FTE by Academic Year

AY 2007-2008

	07/SU	07/FA	08/SP	AY Totals	
Headcount	79	184	200	Headcount (duplicated)	463
Credit Hours	186.00	835.00	901.00	Headcount (unduplicated)	360
FTE	31	56	60	Credit Hours	1,922.00
				Annual FTE	64

AY 2006-2007

	06/SU	06/FA	07/SP	AY Totals	
Headcount	76	210	177	Headcount (duplicated)	463
Credit Hours	210.00	1,032.00	798.00	Headcount (unduplicated)	364
FTE	35	69	53	Credit Hours	2,040.00
				Annual FTE	68

AY 2005-2006

	05/SU	05/FA	06/SP	AY Totals	
Headcount	62	152	156	Headcount (duplicated)	370
Credit Hours	190.00	655.00	734.00	Headcount (unduplicated)	293
FTE	32	44	49	Credit Hours	1,579.00
				Annual FTE	53

AY 2004-2005

	04/SU	04/FA	05/SP	AY Totals	
Headcount	84	176	150	Headcount (duplicated)	410
Credit Hours	182.00	780.00	632.00	Headcount (unduplicated)	337
FTE	30	52	42	Credit Hours	1,594.00
				Annual FTE	53

AY 2003-2004

	03/SU	03/FA	04/SP	AY Totals	
Headcount	89	153	162	Headcount (duplicated)	404
Credit Hours	155.00	623.00	663.00	Headcount (unduplicated)	336
FTE	26	42	44	Credit Hours	1,441.00
				Annual FTE	48

AY 2002-2003

	02/SU	02/FA	03/SP	AY Totals	
Headcount	117	136	168	Headcount (duplicated)	421
Credit Hours	189.00	570.00	616.00	Headcount (unduplicated)	356
FTE	32	38	41	Credit Hours	1,375.00
				Annual FTE	46

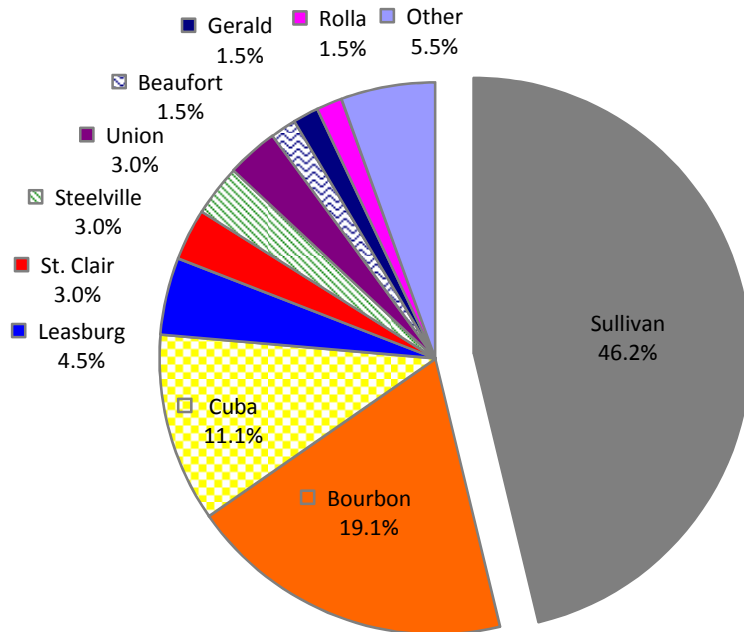
Notes:

(1) All data includes students who completed a course on the SAC campus (including ITV) with a verified grade.

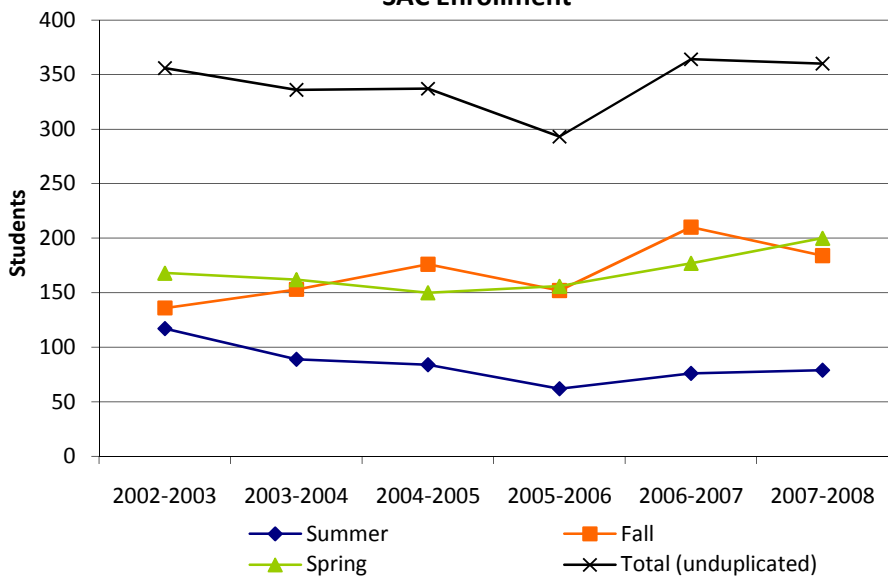
(2) FTE (Full-Time Equivalent):
 Fall and Spring = total semester hours divided by 15
 Summer = total semester hours divided by 6
 Annual = total academic year hours divided by 30

4.12 SAC Enrollment Summary

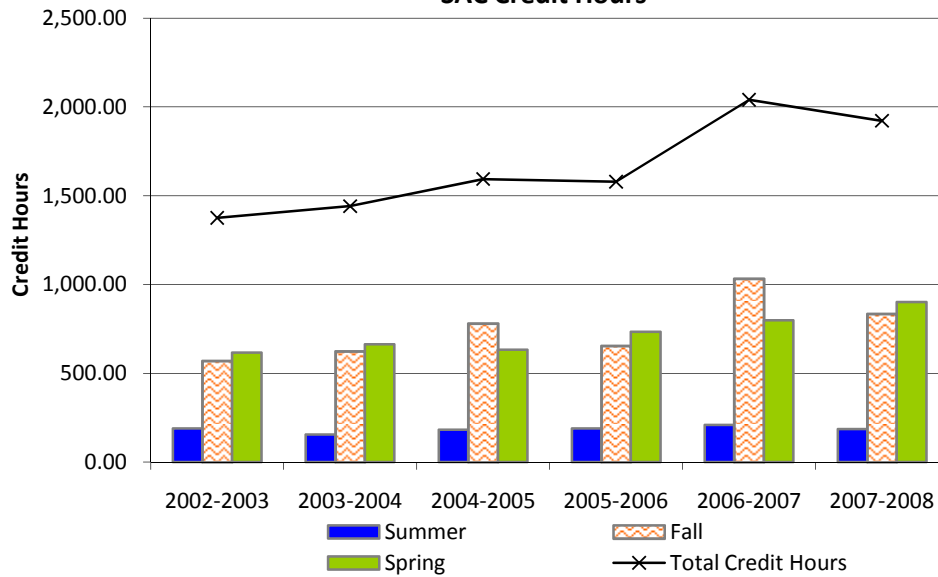
Top Zip Code Locations for SAC Students in Fall 2008



SAC Enrollment



SAC Credit Hours



On-Line Students

4.13 Fall 2008 On-Line Student Characteristics

	Freshmen	Sophomore	Other	Total	% of Total
Total	221	207	68	496	100.0%
Gender					
Male	67	45	22	134	27.0%
Female	154	162	46	362	73.0%
Enrollment Status					
Full-Time	121	120	28	269	54.2%
Part-Time	100	87	40	227	45.8%
Developmental Courses					
1 Course	76	30	4	110	22.2%
2 Courses	19	2	0	21	4.2%
3+ Courses	7	4	0	11	2.2%
Location					
In-District	136	140	50	326	65.7%
Out-of-District	85	67	18	170	34.3%
Out-of-State	0	0	0	0	0.0%
International	0	0	0	0	0.0%
Other	0	0	0	0	0.0%
Age					
<18	4	0	0	4	0.8%
18-19	54	35	0	89	17.9%
20-21	28	42	11	81	16.3%
22-24	24	24	15	63	12.7%
25-29	36	37	13	86	17.3%
30-34	25	22	7	54	10.9%
35-39	16	23	7	46	9.3%
40-49	26	15	8	49	9.9%
50-64	8	7	7	22	4.4%
65 and older	0	2	0	2	0.4%
Unknown	0	0	0	0	0.0%
Race/Ethnicity					
American Indian/Alaska Native	2	0	0	2	0.4%
Asian/Pacific Islander	0	1	0	1	0.2%
Black, non-Hispanic	6	2	0	8	1.6%
Hispanic	0	2	2	4	0.8%
Nonresident Alien	0	0	0	0	0.0%
Race/Ethnicity Unknown	8	13	1	22	4.4%
White, non-Hispanic	205	189	65	459	92.5%

Source: Colleague Census Data

Notes:

(1)Includes students enrolled in any on-line credit bearing course

(2)Developmental coursework is for any ECC campus

4.14 On-Line Student Headcount, Credit Hours & FTE by Academic Year

AY 2007-2008

	07/SU	07/FA	08/SP	AY Totals	
Headcount	273	291	453	Headcount (duplicated)	1,017
Credit Hours	954.00	1,016.00	1,692.00	Headcount (unduplicated)	857
FTE	159	68	113	Credit Hours	3,662.00
				Annual FTE	122

AY 2006-2007

	06/SU	06/FA	07/SP	AY Totals	
Headcount	257	410	448	Headcount (duplicated)	1,115
Credit Hours	886.00	1,612.00	1,704.00	Headcount (unduplicated)	906
FTE	148	107	114	Credit Hours	4,202.00
				Annual FTE	140

AY 2005-2006

	05/SU	05/FA	06/SP	AY Totals	
Headcount	189	369	374	Headcount (duplicated)	932
Credit Hours	652.00	1,449.00	1,454.00	Headcount (unduplicated)	795
FTE	109	97	97	Credit Hours	3,555.00
				Annual FTE	119

AY 2004-2005

	04/SU	04/FA	05/SP	AY Totals	
Headcount	154	284	268	Headcount (duplicated)	706
Credit Hours	511.00	1,074.00	1,008.00	Headcount (unduplicated)	607
FTE	85	72	67	Credit Hours	2,593.00
				Annual FTE	86

AY 2003-2004

	03/SU	03/FA	04/SP	AY Totals	
Headcount	175	179	240	Headcount (duplicated)	594
Credit Hours	584.00	619.00	877.00	Headcount (unduplicated)	507
FTE	97	41	58	Credit Hours	2,080.00
				Annual FTE	69

AY 2002-2003

	02/SU	02/FA	03/SP	AY Totals	
Headcount	133	151	193	Headcount (duplicated)	477
Credit Hours	394.00	487.00	639.00	Headcount (unduplicated)	421
FTE	66	32	43	Credit Hours	1,520.00
				Annual FTE	51

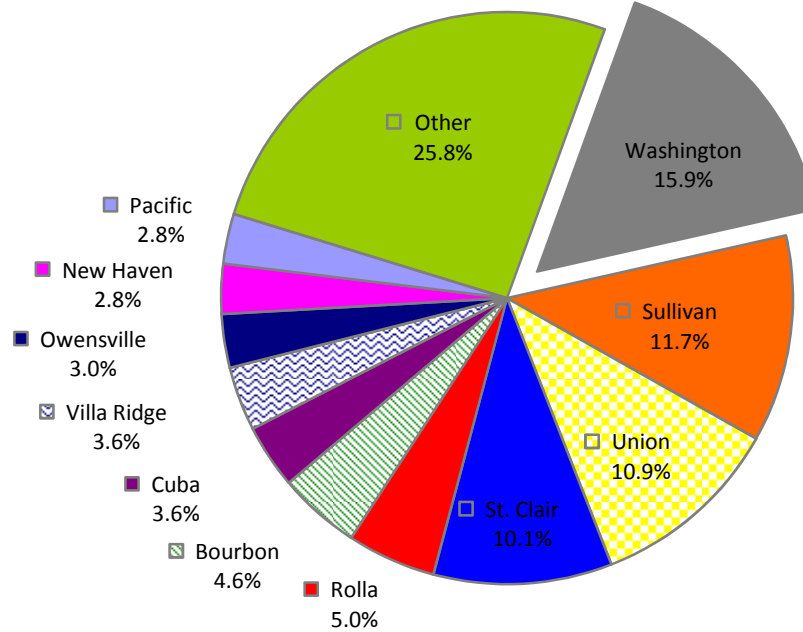
Notes:

(1) All data includes students who completed an on-line course with a verified grade.

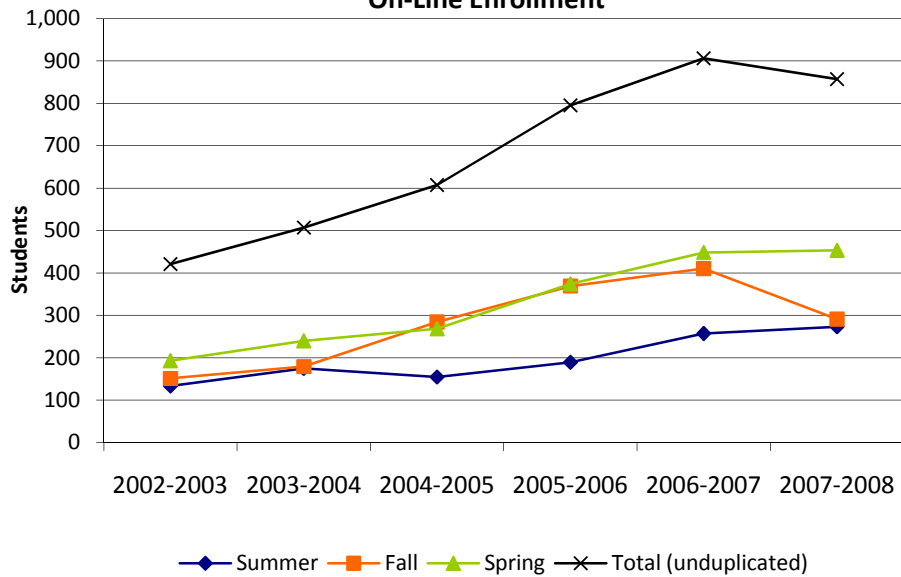
(2) FTE (Full-Time Equivalent):
 Fall and Spring = total semester hours divided by 15
 Summer = total semester hours divided by 6
 Annual = total academic year hours divided by 30

4.15 On-Line Student Enrollment Summary

Top Zip Code Locations for On-Line Students in Fall 2008



On-Line Enrollment



On-Line Credit Hours

