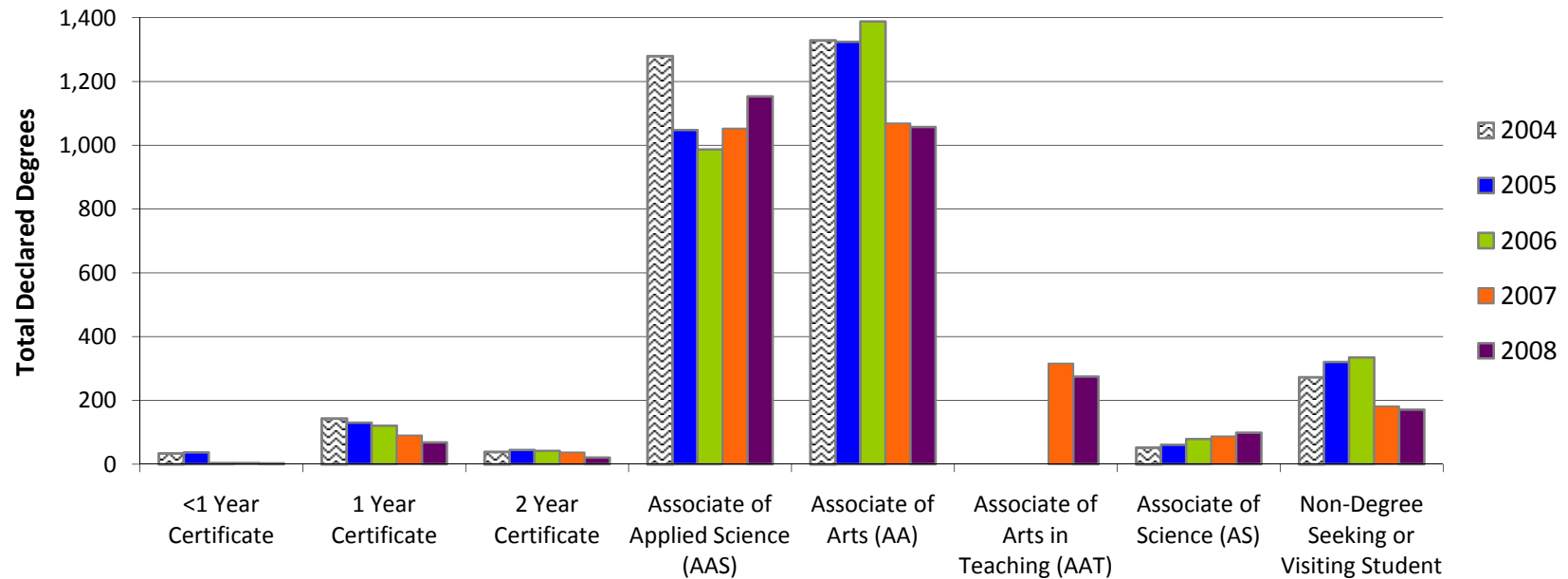


5.1 Fall Declared Degrees and Certificates

						% Change	
	2004	2005	2006	2007	2008	2004-2008	2007-2008
Total Declared Degrees*	3,150	2,965	2,956	2,837	2,847	-9.6%	0.4%
Degree Type							
<1 Year Certificate	34	37	4	5	3	-91.2%	-40.0%
1 Year Certificate	143	130	121	90	68	-52.4%	-24.4%
2 Year Certificate	39	45	42	37	21	-46.2%	-43.2%
Associate of Applied Science (AAS)	1,280	1,048	987	1,052	1,153	-9.9%	9.6%
Associate of Arts (AA)	1,329	1,324	1,388	1,069	1,057	-20.5%	-1.1%
Associate of Arts in Teaching (AAT)	na	na	na	316	275	na	-13.0%
Associate of Science (AS)	52	61	79	87	99	90.4%	13.8%
Non-Degree Seeking or Visiting Student	273	320	335	181	171	-37.4%	-5.5%



Source: Colleague

*Students may have more than one active declared degree (dual credit, dual technical credit, dual enrollment and unknown degree students not included).

5.2 Fall Course Enrollment by Academic Division

Career & Technical									% Change	
Course Prefix	Description	2003	2004	2005	2006	2007	2008	Total Course Enrollment	2003-2008	2007-2008
AI	HVAC/R	212	306	321	222	181	229	1,471	8.0%	26.5%
AT	Automotive Technology	41	49	36	37	20	41	224	0.0%	105.0%
BC	Building Construction Technology	24	14	14	18	10	8	88	-66.7%	-20.0%
CS	Computer Information Systems	467	328	330	320	262	323	2,030	-30.8%	23.3%
DF	Drafting & Design	87	113	58	86	98	148	590	70.1%	51.0%
HM	Hospitality/Culinary Arts	145	205	183	185	159	173	1,050	19.3%	8.8%
IE	Industrial Engineering Technology	105	85	91	84	75	68	508	-35.2%	-9.3%
MA	Precision Machining	127	85	119	116	68	78	593	-38.6%	14.7%
WL	Welding	14	15	28	29	16	24	126	71.4%	50.0%
Total Course Enrollment in Career & Technical		1,222	1,200	1,180	1,097	889	1,092	6,680	-10.6%	22.8%

Education & Social Sciences									% Change	
Course Prefix	Description	2003	2004	2005	2006	2007	2008	Total Course Enrollment	2003-2008	2007-2008
AC	Accounting	263	272	341	311	275	219	1,681	-16.7%	-20.4%
AN	Anthropology	6	10	10	--	--	--	26	na	na
BT	Business Technology	262	282	281	322	229	227	1,603	-13.4%	-0.9%
BU	Business	329	295	336	433	361	345	2,099	4.9%	-4.4%
CJ	Criminal Justice	20	31	68	48	55	53	275	165.0%	-3.6%
CV	Civilization	--	--	--	--	--	50	50	na	na
EC	Economics	184	185	142	154	135	126	926	-31.5%	-6.7%
ED	Education	308	269	226	143	222	265	1,433	-14.0%	19.4%
GE	Geography	40	42	46	32	26	20	206	-50.0%	-23.1%
HI	History	376	354	277	280	315	319	1,921	-15.2%	1.3%
PE	Physical Education	618	546	456	525	595	571	3,311	-7.6%	-4.0%
PS	Political Science	185	174	162	150	102	212	985	14.6%	107.8%
PY	Psychology	379	365	308	365	425	462	2,304	21.9%	8.7%
SO	Sociology	246	211	215	271	274	307	1,524	24.8%	12.0%
Total Course Enrollment in Education & Social Sciences		3,216	3,036	2,868	3,034	3,014	3,176	18,344	-1.2%	5.4%

English, Foreign Language & Philosophy									% Change	
Course Prefix	Description	2003	2004	2005	2006	2007	2008	Total Course Enrollment	2003-2008	2007-2008
EN	English	1,246	1,317	1,350	1,511	1,487	1,401	8,312	12.4%	-5.8%
FL	Foreign Language (Arabic, Chinese, French, German & Spanish)	65	74	88	132	131	113	603	73.8%	-13.7%
JR	Journalism	7	6	8	1	6	13	41	85.7%	116.7%
PR	Philosophy	109	86	89	135	116	156	691	43.1%	34.5%
Total Course Enrollment in English, Foreign Language & Philosophy		1,427	1,483	1,535	1,779	1,740	1,683	9,647	17.9%	-3.3%

5.2 Fall Course Enrollment by Academic Division (cont'd)

Fine & Performing Arts

									% Change	
Course		2003	2004	2005	2006	2007	2008	Total Course Enrollment	2003-2008	2007-2008
Prefix	Description									
AR	Art	325	310	282	286	345	257	1,805	-20.9%	-25.5%
CT	Communication, Media & Theatre	515	434	469	487	523	485	2,913	-5.8%	-7.3%
GD	Graphic Design	159	164	149	162	172	185	991	16.4%	7.6%
MU	Music	362	328	265	304	302	332	1,893	-8.3%	9.9%
Total Course Enrollment in Fine & Performing Arts		1,361	1,236	1,165	1,239	1,342	1,259	7,602	-7.5%	-6.2%

Nursing & Allied Health

									% Change	
Course		2003	2004	2005	2006	2007	2008	Total Course Enrollment	2003-2008	2007-2008
Prefix	Description									
EM	Emergency Medical Technology/Paramedic	111	148	94	125	112	163	753	46.8%	45.5%
FT	Fire Technology	20	40	38	35	30	57	220	185.0%	90.0%
NR	Nursing	199	190	225	196	158	187	1,155	-6.0%	18.4%
RC	Respiratory Care	71	61	64	81	96	126	499	77.5%	31.3%
Total Course Enrollment in Nursing & Allied Health		401	439	421	437	396	533	2,627	32.9%	34.6%

Science & Mathematics

									% Change	
Course		2003	2004	2005	2006	2007	2008	Total Course Enrollment	2003-2008	2007-2008
Prefix	Description									
BI	Biology	977	1,028	845	892	933	1,051	5,726	7.6%	12.6%
CH	Chemistry	253	281	185	263	240	257	1,479	1.6%	7.1%
EG	Pre-Engineering	69	56	75	62	69	72	403	4.3%	4.3%
ES	Environmental Science	--	--	9	28	35	86	158	na	145.7%
GL	Geology	--	39	41	44	29	81	234	na	179.3%
MT	Mathematics	950	1,101	1,040	1,102	1,178	1,221	6,592	28.5%	3.7%
PH	Physics/Physical Science	125	130	138	115	82	54	644	-56.8%	-34.1%
Total Course Enrollment in Science & Mathematics		2,374	2,635	2,333	2,506	2,566	2,822	15,236	18.9%	10.0%

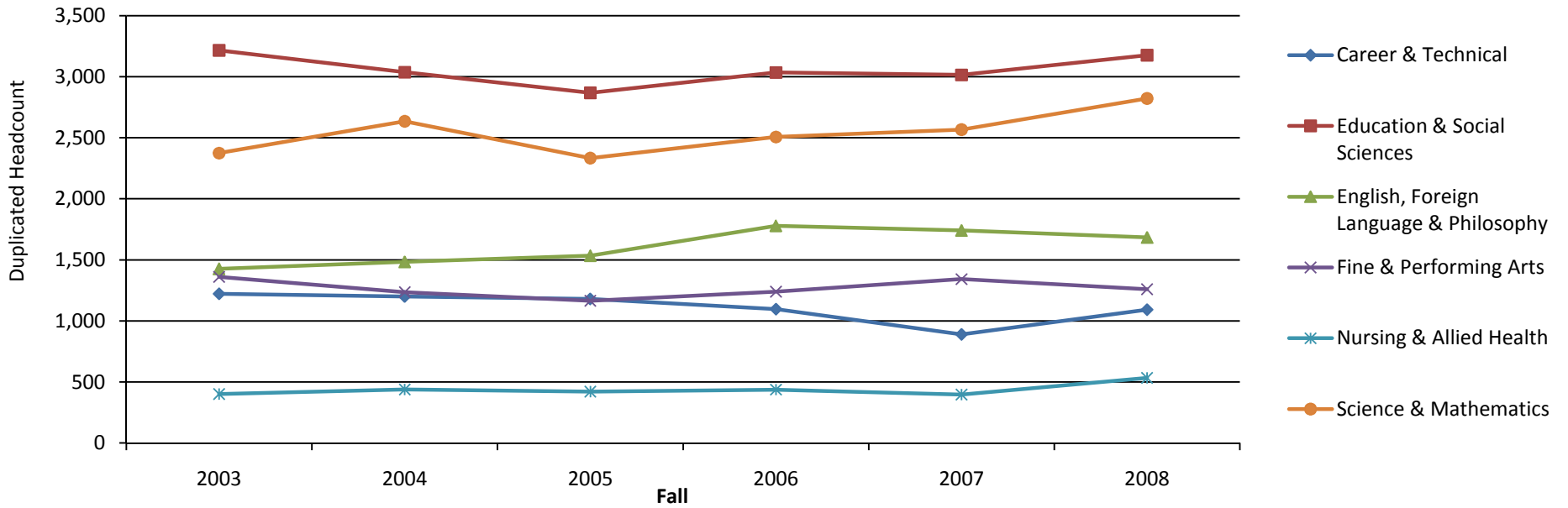
Student Success

									% Change	
Course		2003	2004	2005	2006	2007	2008	Total Course Enrollment	2003-2008	2007-2008
Prefix	Description									
FS	Student Success	718	754	692	710	741	741	4,356	3.2%	0.0%

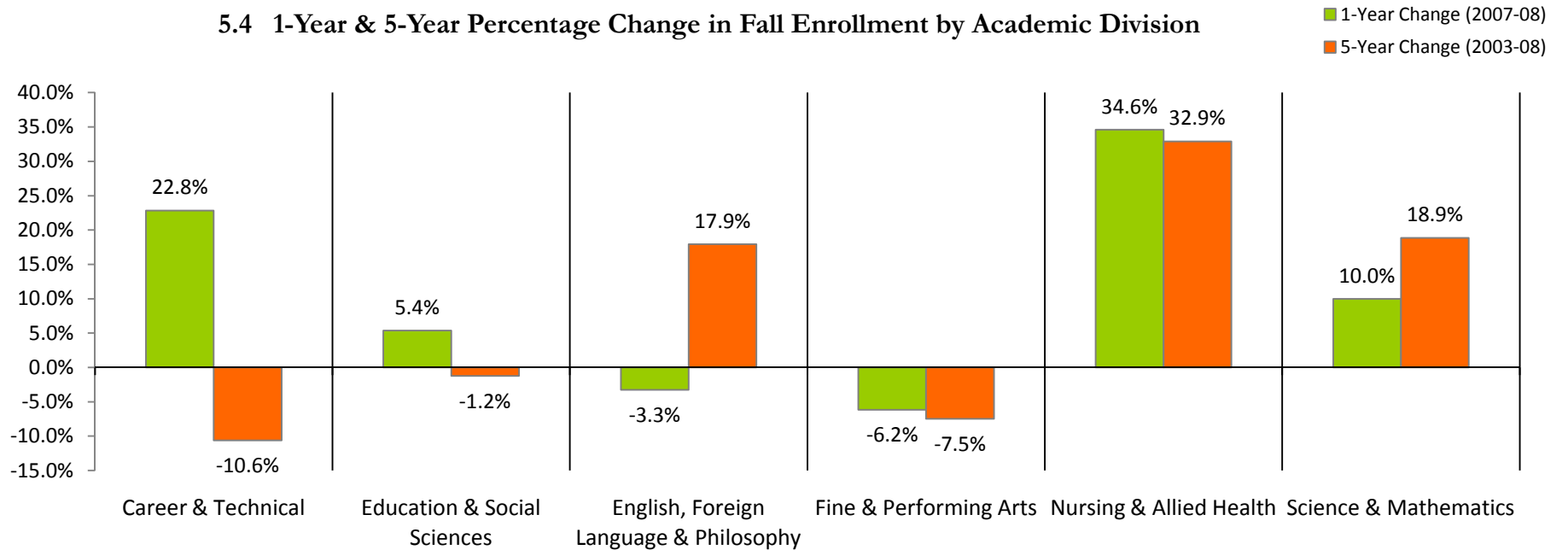
Source: Colleague Fall Census

Note: enrollment figures are duplicated student headcounts

5.3 Fall Enrollment Trend by Academic Division



5.4 1-Year & 5-Year Percentage Change in Fall Enrollment by Academic Division



5.5 Fall Dual Credit Course Enrollment

Dual Credit								% Change		
Course		2003	2004	2005	2006	2007	2008	Total Course Enrollment	2003-2008	2007-2008
Prefix	Description									
BI	Biology	40	18	52	56	70	40	276	0.0%	-42.9%
CT	Communication, Media & Theatre	32	30	66	67	82	92	369	187.5%	12.2%
CV	Civilization	--	--	--	--	--	15	15	na	na
EN	English	73	46	70	65	47	76	377	4.1%	61.7%
GL	Geology	--	--	--	12	20	18	50	na	-10.0%
HI	History	127	133	91	106	116	110	683	-13.4%	-5.2%
MT	Mathematics	113	104	132	152	151	165	817	46.0%	9.3%
PE	Physical Education	--	--	--	3	--	--	3	na	na
PY	Psychology	36	22	39	56	30	28	211	-22.2%	-6.7%
SO	Sociology	35	37	29	48	83	46	278	31.4%	-44.6%
Total Course Enrollment in Dual Credit		456	390	479	565	599	590	3,079	29.4%	-1.5%

Dual Technical Credit								% Change		
Course		2003	2004	2005 ⁽¹⁾	2006	2007	2008	Total Course Enrollment	2003-2008	2007-2008
Prefix	Description									
AC	Accounting	4	--	116	8	--	--	128	na	na
AI	HVAC/R	36	18	--	--	--	--	54	na	na
AR	Art	9	5	3	2	42	42	103	366.7%	0.0%
AT	Automotive Technology	13	72	86	65	143	139	518	969.2%	-2.8%
BC	Building Construction Technology	36	93	82	82	96	40	429	11.1%	-58.3%
BT	Business Technology	85	167	290	64	93	31	730	-63.5%	-66.7%
BU	Business	--	45	23	7	8	14	97	na	75.0%
CS	Computer Information Systems	21	28	41	36	47	20	193	-4.8%	-57.4%
DF	Drafting & Design	33	45	69	72	76	78	373	136.4%	2.6%
ED	Education	--	--	--	--	9	7	16	na	-22.2%
EM	Emergency Medical Technology/Paramedic	--	--	--	16	29	15	60	na	-48.3%
GD	Graphic Design	28	25	67	45	135	122	422	335.7%	-9.6%
HM	Hospitality	--	7	--	--	--	--	7	na	na
IE	Industrial Engineering Technology	10	11	13	9	8	--	51	na	na
MA	Precision Machining	40	64	74	56	82	44	360	10.0%	-46.3%
WL	Welding	6	41	33	59	80	31	250	416.7%	-61.3%
Total Course Enrollment in Dual Technical Credit		321	621	897	521	848	583	3,791	81.6%	-31.3%

Source: Colleague Fall Census

Notes:

- (1) The increase for Dual Technical Credit enrollment in Fall 2005 was due to a temporary change in the enrollment process
- (2) Enrollment figures are duplicated student headcounts

5.6 1-Year & 5-Year Percentage Change in Dual Credit Enrollment

