

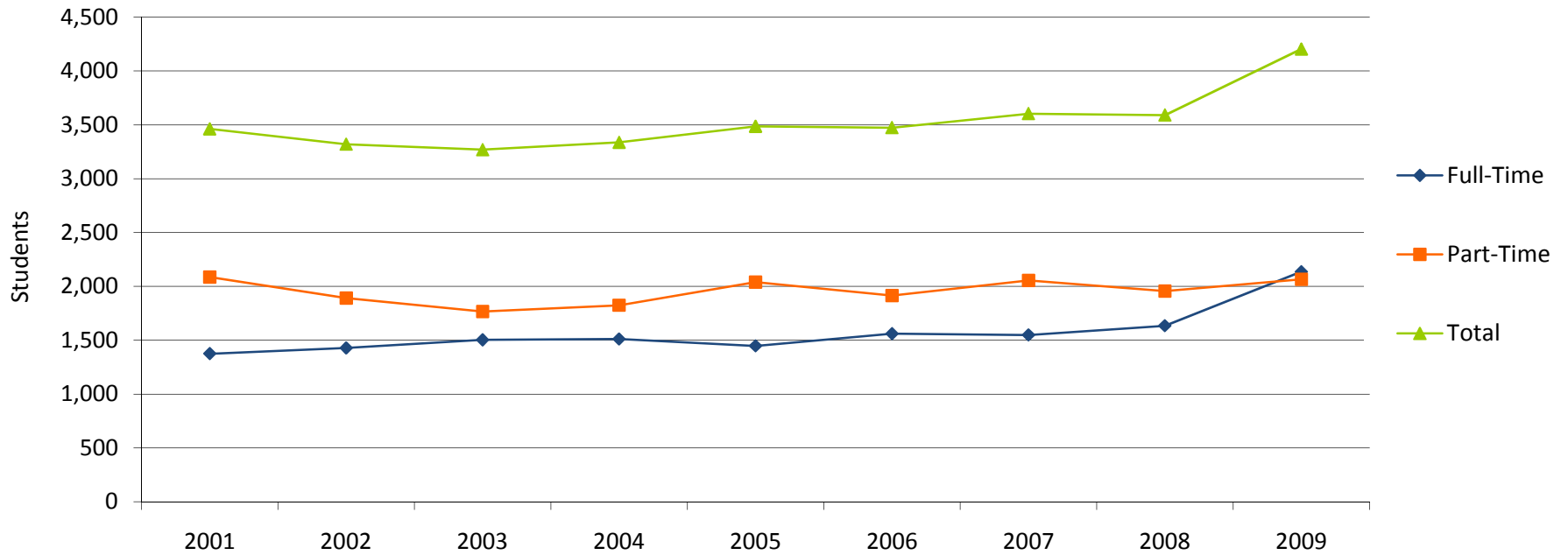
1.1 Fall 2009 Student Characteristics

	Freshmen	Sophomore	Other	Dual Credit/ Dual Enrolled	Dual Tech Credit	Total	% of Total
Total	2,247	1,000	285	447	224	4,203	100.0%
Gender							
Male	955	364	80	167	161	1,727	41.1%
Female	1,292	636	205	280	63	2,476	58.9%
Enrollment Status							
Full-Time	1,460	591	80	4	2	2,137	50.8%
Part-Time	787	409	205	443	222	2,066	49.2%
Developmental Courses							
1 course	766	114	15	0	0	895	21.3%
2 courses	190	5	0	0	0	195	4.6%
3+ courses	137	0	0	0	0	137	3.3%
Location							
In-District	1,289	649	205	320	92	2,555	60.8%
Out-of-District	948	351	79	127	132	1,637	38.9%
Out-of-State	7	0	0	0	0	7	0.2%
International	3	0	1	0	0	4	0.1%
Unknown	0	0	0	0	0	0	0.0%
Age							
< 18	69	3	0	376	182	630	15.0%
18-19	955	165	0	71	37	1,228	29.2%
20-21	272	298	41	0	1	612	14.6%
22-24	197	111	60	0	0	368	8.8%
25-29	208	114	47	0	2	371	8.8%
30-34	159	87	39	0	0	285	6.8%
35-39	119	73	34	0	1	227	5.4%
40-49	157	109	49	0	0	315	7.5%
50-64	76	35	14	0	1	126	3.0%
65 and older	35	5	1	0	0	41	1.0%
Unknown	0	0	0	0	0	0	0.0%
Race/Ethnicity							
American Indian/Alaska Native	9	3	0	1	1	14	0.3%
Asian	12	9	1	1	0	23	0.5%
Black or African American	30	8	2	2	4	46	1.1%
Hispanic	37	7	4	3	3	54	1.3%
Native Hawaiian/Pacific Islander	1	0	0	0	0	1	0.0%
Nonresident Alien	3	0	0	0	0	3	0.1%
Race/Ethnicity Unknown	64	39	2	9	10	124	3.0%
Two or more races	2	0	0	2	0	4	0.1%
White	2,089	934	276	429	206	3,934	93.6%

Source: Colleague Fall Census

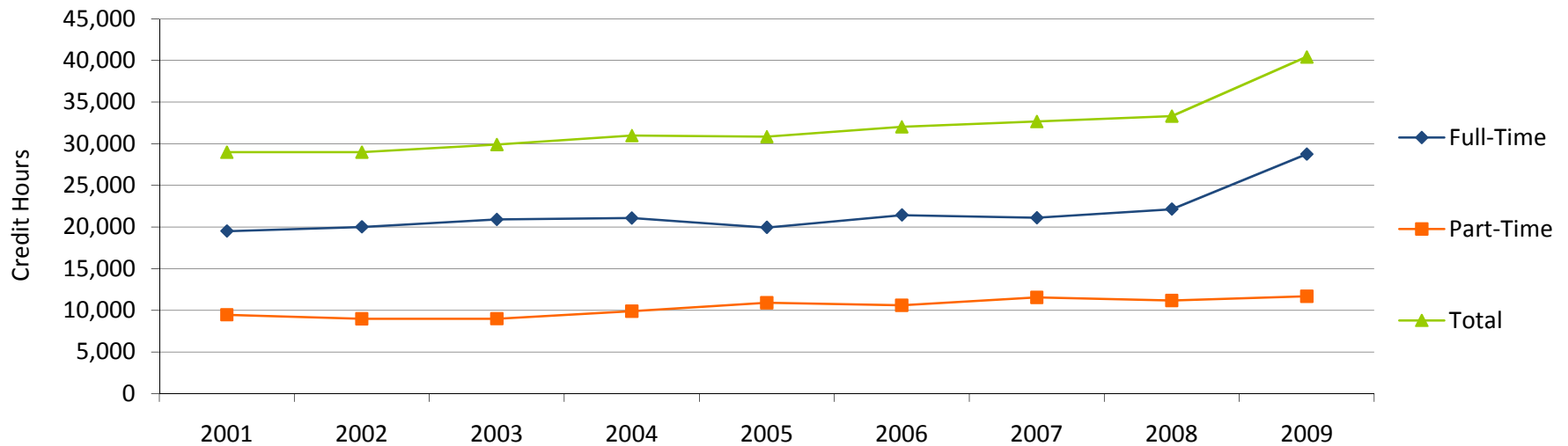
1.2 Fall Credit Enrollment By Enrollment Status

	2001	2002	2003	2004	2005	2006	2007	2008	2009	% Change	
										2001-2009	2008-2009
Total	3,462	3,320	3,269	3,337	3,486	3,474	3,604	3,591	4,203	21.4%	17.0%
Headcount											
Full-Time	1,375	1,428	1,503	1,512	1,447	1,560	1,549	1,635	2,137	55.4%	30.7%
Part-Time	2,087	1,892	1,766	1,825	2,039	1,914	2,055	1,956	2,066	-1.0%	5.6%
Percentages											
Full-Time	39.7%	43.0%	46.0%	45.3%	41.5%	44.9%	43.0%	45.5%	50.8%		
Part-Time	60.3%	57.0%	54.0%	54.7%	58.5%	55.1%	57.0%	54.5%	49.2%		



1.3 Fall Credit Hours

	2001	2002	2003	2004	2005	2006	2007	2008	2009	% Change	
										2001-2009	2008-2009
Total	28,989	28,993	29,912	30,989	30,861	32,046	32,677	33,328	40,444	39.5%	21.4%
Credit Hours											
Full-Time	19,512	20,011	20,911	21,083	19,950	21,437	21,109	22,150	28,756	47.4%	29.8%
Part-Time	9,477	8,982	9,001	9,906	10,911	10,609	11,568	11,178	11,687	23.3%	4.6%
Percentages											
Full-Time	67.3%	69.0%	69.9%	68.0%	64.6%	66.9%	64.6%	66.5%	71.1%		
Part-Time	32.7%	31.0%	30.1%	32.0%	35.4%	33.1%	35.4%	33.5%	28.9%		

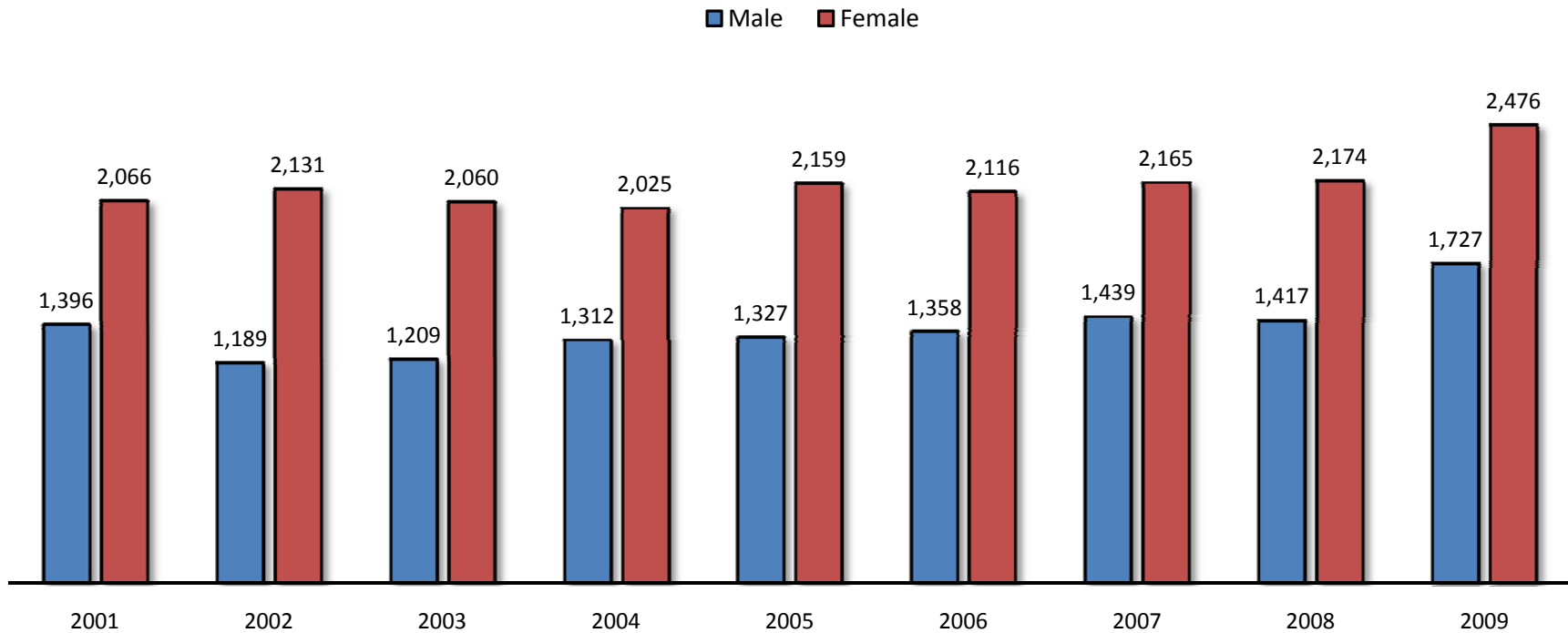


1.4 Fall Full-Time Equivalent (FTE) Enrollment

	2001	2002	2003	2004	2005	2006	2007	2008	2009	% Change	
										2001-2009	2008-2009
FTE Enrollment	1,932	1,934	1,994	2,066	2,057	2,136	2,178	2,222	2,696	39.5%	21.3%

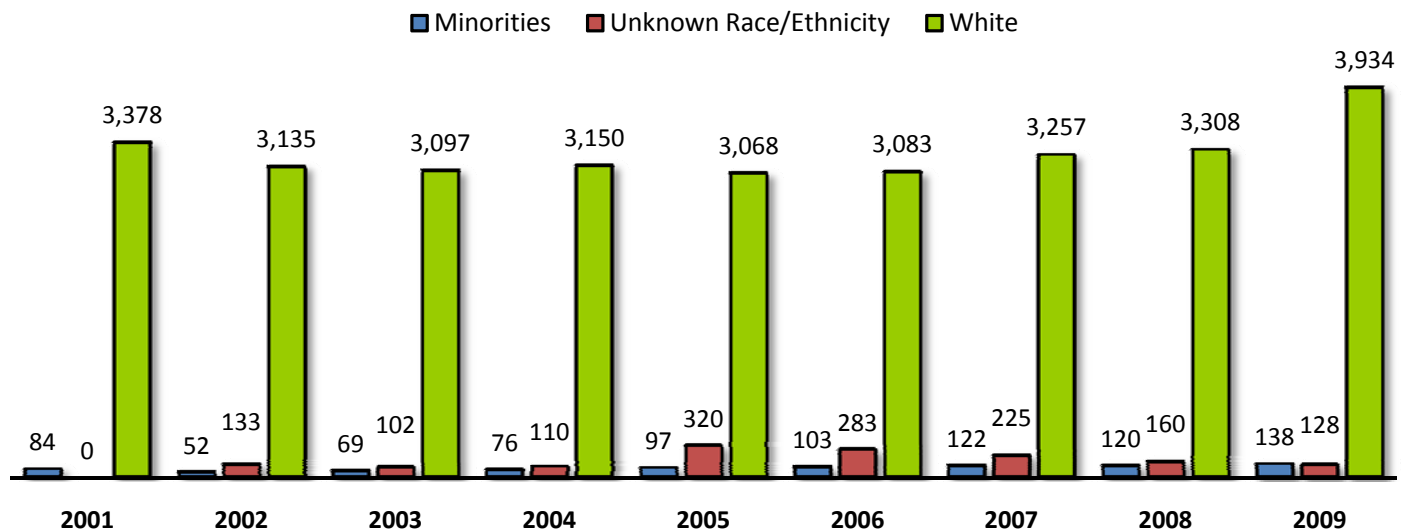
1.5 Fall Credit Enrollment By Gender

	2001	2002	2003	2004	2005	2006	2007	2008	2009	% Change	
										2001-2009	2008-2009
Headcount											
Total	3,462	3,320	3,269	3,337	3,486	3,474	3,604	3,591	4,203	21.4%	17.0%
Male	1,396	1,189	1,209	1,312	1,327	1,358	1,439	1,417	1,727	23.7%	21.9%
Female	2,066	2,131	2,060	2,025	2,159	2,116	2,165	2,174	2,476	19.8%	13.9%
Percentages											
Male	40.3%	35.8%	37.0%	39.3%	38.1%	39.1%	39.9%	39.5%	41.1%		
Female	59.7%	64.2%	63.0%	60.7%	61.9%	60.9%	60.1%	60.5%	58.9%		



1.6 Fall Credit Enrollment By Ethnicity

											% Change	
	2001	2002	2003	2004	2005	2006	2007	2008	2009	2001-2009	2008-2009	
Total	3,462	3,320	3,269	3,337	3,486	3,474	3,604	3,591	4,203	21.4%	17.0%	
Race/Ethnicity*												
American Indian/Alaska Native	13	5	5	10	14	13	15	11	14	7.7%	27.3%	
Asian	21	10	20	22	27	24	21	20	23	9.5%	15.0%	
Black or African American	32	18	20	18	21	26	36	46	46	43.8%	0.0%	
Hispanic	18	19	24	26	35	40	50	43	54	200.0%	25.6%	
Native Hawaiian/Pacific Islander	na	na	na	na	na	na	na	na	1	na	na	
Nonresident Alien	0	0	1	1	1	5	0	3	3	na	0.0%	
Race/Ethnicity Unknown	0	133	102	110	320	283	225	160	124	na	-22.5%	
Two or more races	na	na	na	na	na	na	na	na	4	na	na	
White	3,378	3,135	3,097	3,150	3,068	3,083	3,257	3,308	3,934	16.5%	18.9%	
Percentages												
American Indian/Alaska Native	0.4%	0.2%	0.2%	0.3%	0.4%	0.4%	0.4%	0.3%	0.3%			
Asian	0.6%	0.3%	0.6%	0.7%	0.8%	0.7%	0.6%	0.6%	0.5%			
Black or African American	0.9%	0.5%	0.6%	0.5%	0.6%	0.7%	1.0%	1.3%	1.1%			
Hispanic	0.5%	0.6%	0.7%	0.8%	1.0%	1.2%	1.4%	1.2%	1.3%			
Native Hawaiian/Pacific Islander	na	na	na	na	na	na	na	na	0.0%			
Nonresident Alien	0.0%	0.0%	0.0%	0.0%	0.0%	0.1%	0.0%	0.1%	0.1%			
Race/Ethnicity Unknown	0.0%	4.0%	3.1%	3.3%	9.2%	8.1%	6.2%	4.5%	3.0%			
Two or more races	na	na	na	na	na	na	na	na	0.1%			
White	97.6%	94.4%	94.7%	94.4%	88.0%	88.7%	90.4%	92.1%	93.6%			



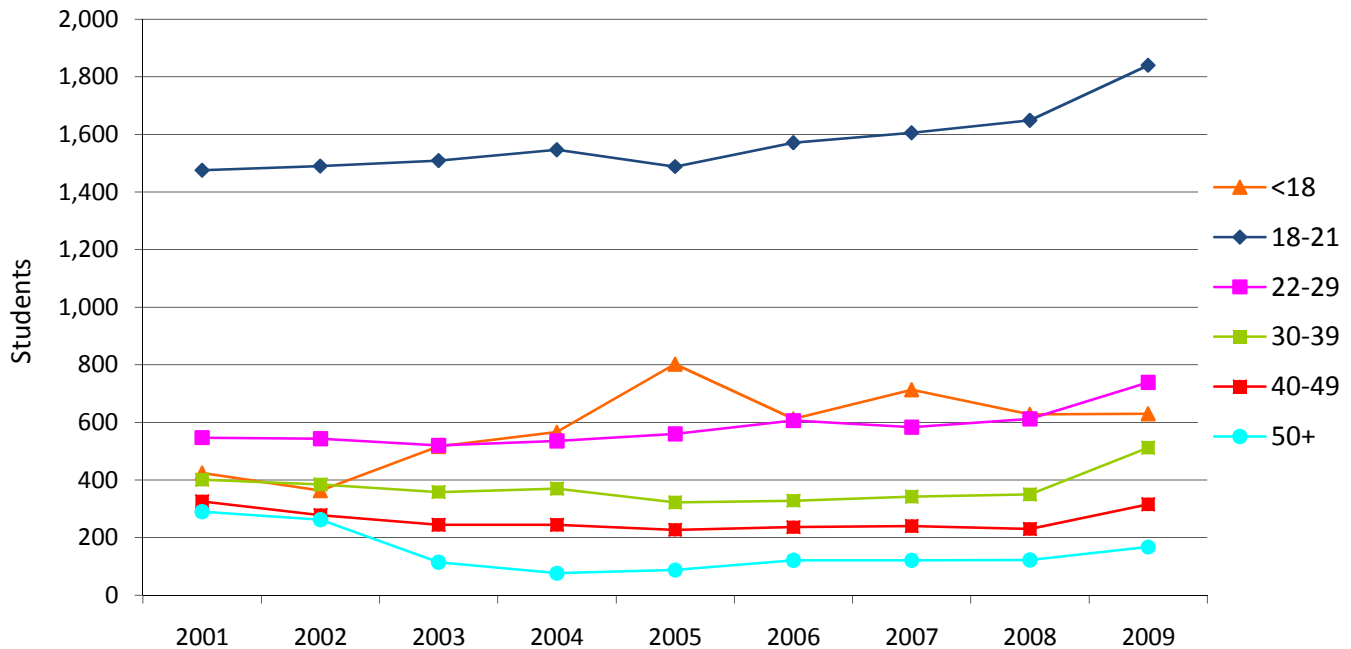
Note: Unknown Race/Ethnicity includes students who identified more than one race.

Source: IPEDS

* In 2009 the following reporting changes were made (per the US Dept. of Education): Asian/Pacific Islander is now Asian; Black, non-Hispanic is now Black/African American; White, non-Hispanic is now White; Native Hawaiian/Other Pacific Islander and Two or more races are new categories

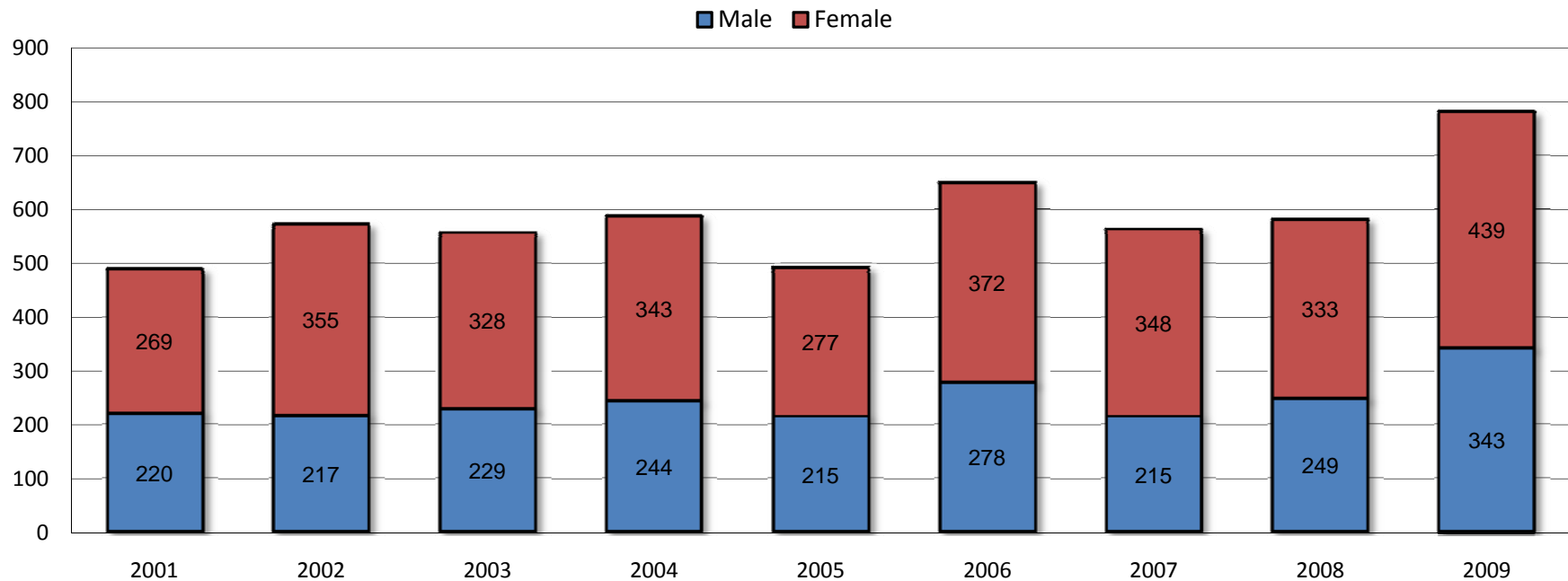
1.7 Fall Credit Enrollment by Age

	2001	2002	2003	2004	2005	2006	2007	2008	2009	% Change	
										2001-2009	2008-2009
Total	3,462	3,320	3,269	3,337	3,486	3,474	3,604	3,591	4,203	21.4%	17.0%
Age Category											
<18	424	363	516	566	802	612	713	628	630	48.6%	0.3%
18-19	966	1,001	1,006	1,052	1,019	1,078	1,098	1,100	1,228	27.1%	11.6%
20-21	509	489	503	494	469	493	507	549	612	20.2%	11.5%
22-24	265	281	274	293	301	306	278	300	368	38.9%	22.7%
25-29	282	262	246	242	259	300	305	312	371	31.6%	18.9%
30-34	203	188	182	211	187	186	188	184	285	40.4%	54.9%
35-39	198	196	176	159	135	142	154	166	227	14.6%	36.7%
40-49	325	278	244	244	227	236	240	230	315	-3.1%	37.0%
50-64	142	111	70	56	65	83	79	82	126	-11.3%	53.7%
65 and older	148	151	44	20	22	38	42	40	41	-72.3%	2.5%
Unknown	0	0	8	0	0	0	0	0	0	na	na
Percentages											
<18	12.2%	10.9%	15.8%	17.0%	23.0%	17.6%	19.8%	17.5%	15.0%		
18-19	27.9%	30.2%	30.8%	31.5%	29.2%	31.0%	30.5%	30.6%	29.2%		
20-21	14.7%	14.7%	15.4%	14.8%	13.5%	14.2%	14.1%	15.3%	14.6%		
22-24	7.7%	8.5%	8.4%	8.8%	8.6%	8.8%	7.7%	8.4%	8.8%		
25-29	8.1%	7.9%	7.5%	7.3%	7.4%	8.6%	8.5%	8.7%	8.8%		
30-34	5.9%	5.7%	5.6%	6.3%	5.4%	5.4%	5.2%	5.1%	6.8%		
35-39	5.7%	5.9%	5.4%	4.8%	3.9%	4.1%	4.3%	4.6%	5.4%		
40-49	9.4%	8.4%	7.5%	7.3%	6.5%	6.8%	6.7%	6.4%	7.5%		
50-64	4.1%	3.3%	2.1%	1.7%	1.9%	2.4%	2.2%	2.3%	3.0%		
65 and older	4.3%	4.5%	1.3%	0.6%	0.6%	1.1%	1.2%	1.1%	1.0%		
Unknown	0.0%	0.0%	0.2%	0.0%	0.0%	0.0%	0.0%	0.0%	0.0%		



1.8 Fall Credit Enrollment By Full-Time, First-Time, Degree/Certificate-Seeking Students

	2001	2002	2003	2004	2005	2006	2007	2008	2009	% Change	
										2001-2009	2008-2009
Total*	489	572	557	587	492	650	563	582	782	59.9%	34.4%
Headcount											
Male	220	217	229	244	215	278	215	249	343	55.9%	37.8%
Female	269	355	328	343	277	372	348	333	439	63.2%	31.8%
Percentages											
Male	45.0%	37.9%	41.1%	41.6%	43.7%	42.8%	38.2%	42.8%	43.9%		
Female	55.0%	62.1%	58.9%	58.4%	56.3%	57.2%	61.8%	57.2%	56.1%		



Source: IPEDS

* Represents the IPEDS Graduation Rate Survey cohort

1.9 Twelve-Month* Unduplicated Headcount

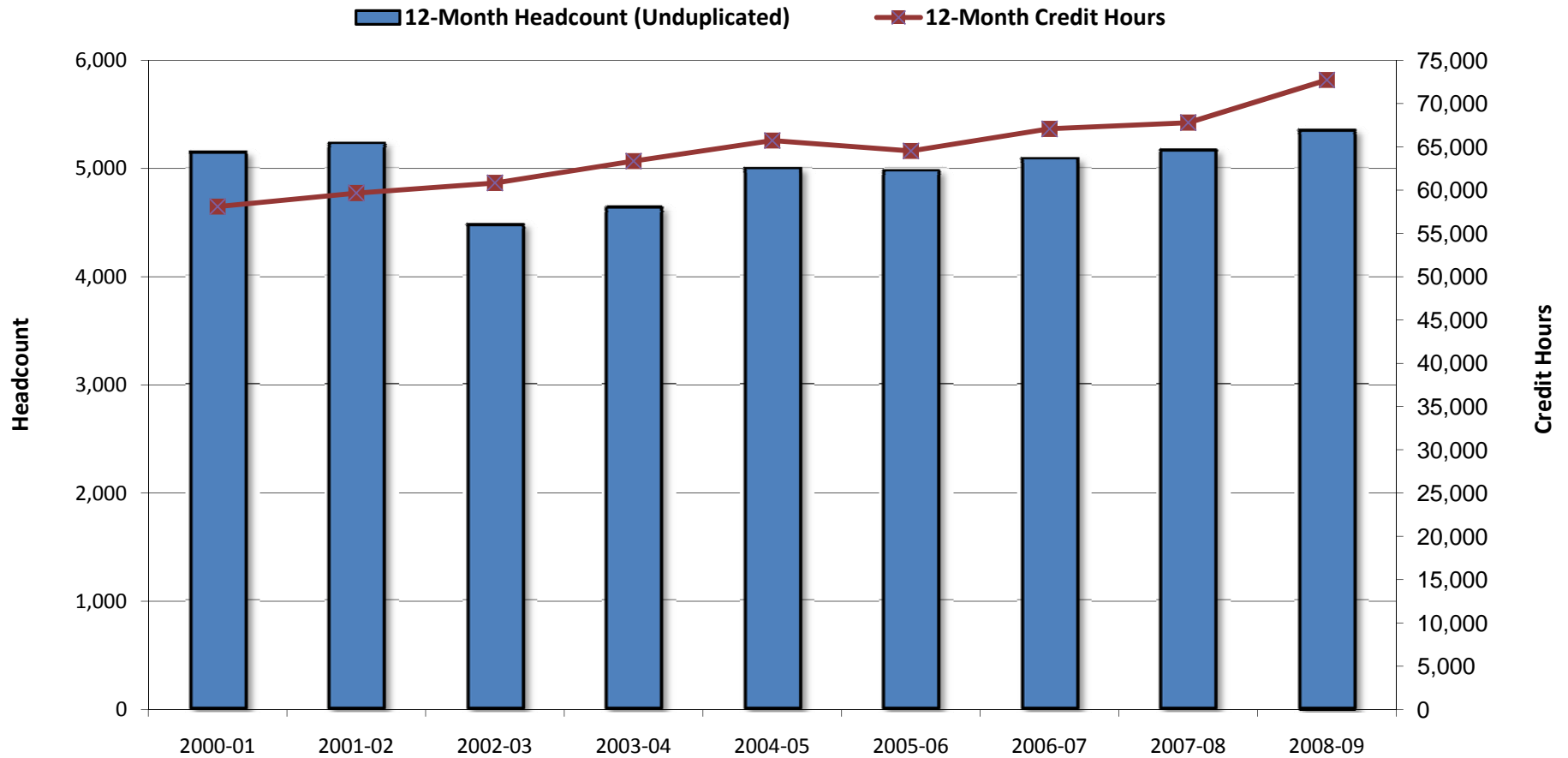
	2000-01	2001-02	2002-03	2003-04	2004-05	2005-06	2006-07	2007-08	2008-09	% Change	
										2000-01 to 2008-09	2007-08 to 2008-09
Headcount											
Total	5,140	5,225	4,473	4,629	4,992	4,971	5,083	5,160	5,345	4.0%	3.6%
Male	2,151	2,163	1,680	1,805	1,999	1,951	1,966	2,014	2,128	-1.1%	5.7%
Female	2,989	3,062	2,793	2,824	2,993	3,020	3,117	3,146	3,217	7.6%	2.3%



Source: IPEDS
* July 1 - June 30

1.10 Twelve-Month* Credit Hours & Full-Time Equivalent (FTE) Enrollment

	2000-01	2001-02	2002-03	2003-04	2004-05	2005-06	2006-07	2007-08	2008-09	% Change	
										2000-01 to 2008-09	2007-08 to 2008-09
Credit Hours	58,104	59,658	60,831	63,347	65,715	64,532	67,072	67,794	72,729	25.2%	7.3%
FTE	1,937	1,989	2,028	2,112	2,191	2,151	2,236	2,260	2,424	25.1%	7.3%

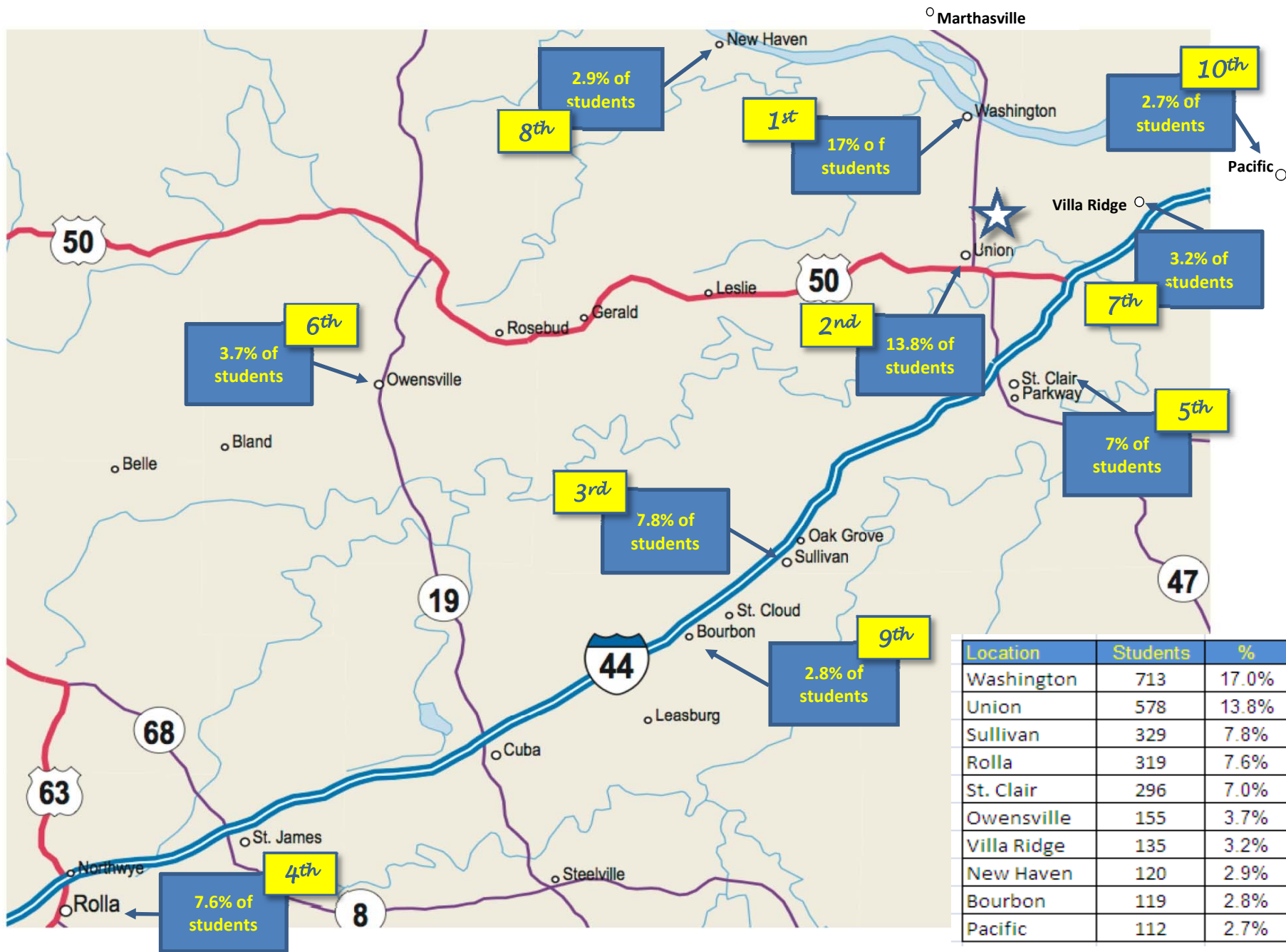


Source: IPEDS

* July 1 - June 30

Note: FTE for twelve-month instructional activity = twelve-month credit hours/30

1.11 Fall 2009 Enrollment by Zip Code



Source: Colleague

Note: Percentages are based on total fall enrollment

1.12 Fall Enrollment by Day & Evening Students

	2003	2004	2005	2006	2007	2008	2009	% Change	
								2003-2009	2008-2009
Total	3,269	3,337	3,486	3,474	3,604	3,591	4,203	28.6%	17.0%
Course Time(s)									
Day Only	1,875	1,957	1,828	1,872	2,053	2,108	2,461	31.3%	16.7%
Evening Only	496	426	469	507	491	503	461	-7.1%	-8.3%
Day & Evening	898	954	1,189	1,095	1,060	980	1,281	42.7%	30.7%

