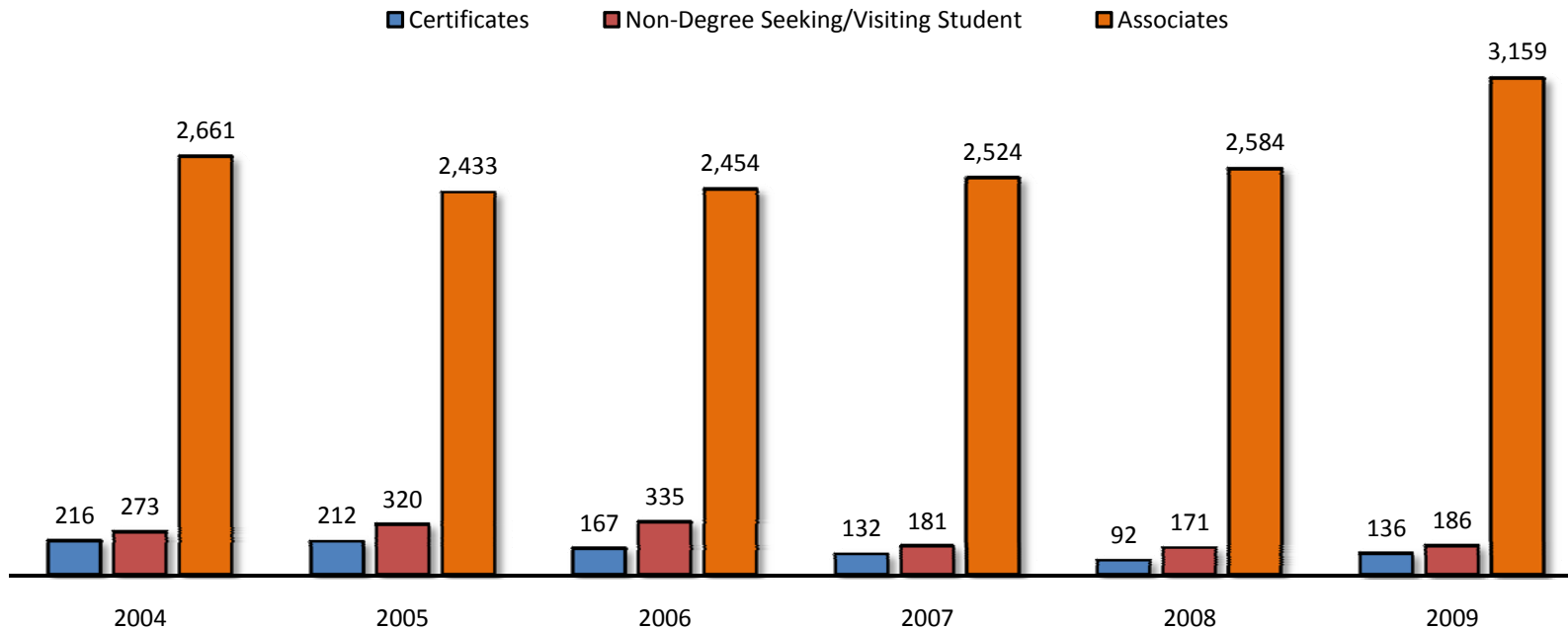


5.1 Fall Declared Degrees and Certificates

	2004	2005	2006	2007	2008	2009	% Change	
							2004-2009	2008-2009
Total Declared Degrees*	3,150	2,965	2,956	2,837	2,847	3,481	10.5%	22.3%
Degree Type								
<1 Year Certificate	34	37	4	5	3	11	-67.6%	266.7%
1 Year Certificate	143	130	121	90	68	90	-37.1%	32.4%
2 Year Certificate	39	45	42	37	21	35	-10.3%	66.7%
Associate of Applied Science (AAS)	1,280	1,048	987	1,052	1,153	1,419	10.9%	23.1%
Associate of Arts (AA)	1,329	1,324	1,388	1,069	1,057	1,430	7.6%	35.3%
Associate of Arts in Teaching (AAT)	na	na	na	316	275	181	na	-34.2%
Associate of Science (AS)	52	61	79	87	99	129	148.1%	30.3%
Non-Degree Seeking or Visiting Student	273	320	335	181	171	186	-31.9%	8.8%



Source: Colleague

*Students may have more than one active declared degree (dual credit, dual technical credit, dual enrollment and unknown degree students not included).

5.2 Fall Course Enrollment by Academic Division

Career & Technical										% Change	
Course		2003	2004	2005	2006	2007	2008	2009	Total Course Enrollment	2003-2009	2008-2009
Prefix	Description										
AI	HVAC/R	212	306	321	222	181	229	188	1,659	-11.3%	-17.9%
AT	Automotive Technology	41	49	36	37	20	41	49	273	19.5%	19.5%
BC	Building Construction Technology	24	14	14	18	10	8	9	97	-62.5%	12.5%
CS	Computer Information Systems	467	328	330	320	262	323	440	2,470	-5.8%	36.2%
DF	Drafting & Design	87	113	58	86	98	148	115	705	32.2%	-22.3%
HM	Hospitality/Culinary Arts	145	205	183	185	159	173	219	1,269	51.0%	26.6%
IE	Industrial Engineering Technology	105	85	91	84	75	68	104	612	-1.0%	52.9%
MA	Precision Machining	127	85	119	116	68	78	142	735	11.8%	82.1%
WL	Welding	14	15	28	29	16	24	49	175	250.0%	104.2%
Total Course Enrollment in Career & Technical		1,222	1,200	1,180	1,097	889	1,092	1,315	7,995	7.6%	20.4%

Education & Social Sciences										% Change	
Course		2003	2004	2005	2006	2007	2008	2009	Total Course Enrollment	2003-2009	2008-2009
Prefix	Description										
AC	Accounting	263	272	341	311	275	219	237	1,918	-9.9%	8.2%
AN	Anthropology	6	10	10	--	--	--	27	53	-9.9%	na
BT	Business Technology	262	282	281	322	229	227	255	1,858	-2.7%	12.3%
BU	Business	329	295	336	433	361	345	345	2,444	4.9%	0.0%
CJ	Criminal Justice	20	31	68	48	55	53	169	444	745.0%	218.9%
CV	Civilization	--	--	--	--	--	50	111	161	na	122.0%
EC	Economics	184	185	142	154	135	126	156	1,082	-15.2%	23.8%
ED	Education	308	269	226	143	222	265	270	1,703	-12.3%	1.9%
GE	Geography	40	42	46	32	26	20	57	263	42.5%	185.0%
HI	History	376	354	277	280	315	319	294	2,215	-21.8%	-7.8%
PE	Physical Education	618	546	456	525	595	571	642	3,953	3.9%	12.4%
PS	Political Science	185	174	162	150	102	212	243	1,228	31.4%	14.6%
PY	Psychology	379	365	308	365	425	462	551	2,855	45.4%	19.3%
SO	Sociology	246	211	215	271	274	307	386	1,910	56.9%	25.7%
Total Course Enrollment in Education & Social Sciences		3,216	3,036	2,868	3,034	3,014	3,176	3,743	22,087	16.4%	17.9%

English, Foreign Language & Philosophy										% Change	
Course		2003	2004	2005	2006	2007	2008	2009	Total Course Enrollment	2003-2009	2008-2009
Prefix	Description										
EN	English	1,246	1,317	1,350	1,511	1,487	1,401	1,955	10,267	56.9%	39.5%
FL	Foreign Language (Arabic, Chinese, French, German & Spanish)	65	74	88	132	131	113	159	762	144.6%	40.7%
JR	Journalism	7	6	8	1	6	13	14	55	100.0%	7.7%
PR	Philosophy	109	86	89	135	116	156	154	845	41.3%	-1.3%
Total Course Enrollment in English, Foreign Language & Philosophy		1,427	1,483	1,535	1,779	1,740	1,683	2,282	11,929	59.9%	35.6%

5.2 Fall Course Enrollment by Academic Division (cont'd)

Fine & Performing Arts

										% Change	
Course		2003	2004	2005	2006	2007	2008	2009	Total Course Enrollment	2003-2009	2008-2009
Prefix	Description										
AR	Art	325	310	282	286	345	257	375	2,180	15.4%	45.9%
CT	Communication, Media & Theatre (includes Am.Sign Lang.)	515	434	469	487	523	485	652	3,565	26.6%	34.4%
GD	Graphic Design	159	164	149	162	172	185	177	1,168	11.3%	-4.3%
MU	Music	362	328	265	304	302	332	442	2,335	22.1%	33.1%
Total Course Enrollment in Fine & Performing Arts		1,361	1,236	1,165	1,239	1,342	1,259	1,646	9,248	20.9%	30.7%

Nursing & Allied Health

										% Change	
Course		2003	2004	2005	2006	2007	2008	2009	Total Course Enrollment	2003-2009	2008-2009
Prefix	Description										
EM	Emergency Medical Technology/Paramedic	111	148	94	125	112	163	263	1,016	136.9%	61.3%
FT	Fire Technology	20	40	38	35	30	57	51	271	155.0%	-10.5%
NR	Nursing	199	190	225	196	158	187	227	1,382	14.1%	21.4%
RA	Radiologic Technology	--	--	--	--	--	--	32	32	na	na
RC	Respiratory Care	71	61	64	81	96	126	133	632	87.3%	5.6%
Total Course Enrollment in Nursing & Allied Health		401	439	421	437	396	533	706	3,333	76.1%	32.5%

Science & Mathematics

										% Change	
Course		2003	2004	2005	2006	2007	2008	2009	Total Course Enrollment	2003-2009	2008-2009
Prefix	Description										
BI	Biology	977	1,028	845	892	933	1,051	1,262	6,988	29.2%	20.1%
BY	Biotechnology	--	--	--	--	--	--	14	14	na	na
CH	Chemistry	253	281	185	263	240	257	298	1,777	17.8%	16.0%
EG	Pre-Engineering	69	56	75	62	69	72	89	492	29.0%	23.6%
ES	Environmental Science	--	--	9	28	35	86	91	249	na	5.8%
GL	Geology	--	39	41	44	29	81	81	315	na	0.0%
MT	Mathematics	950	1,101	1,040	1,102	1,178	1,221	1,508	8,100	58.7%	23.5%
PH	Physics/Physical Science	125	130	138	115	82	54	98	742	-21.6%	81.5%
Total Course Enrollment in Science & Mathematics		2,374	2,635	2,333	2,506	2,566	2,822	3,441	18,677	44.9%	21.9%

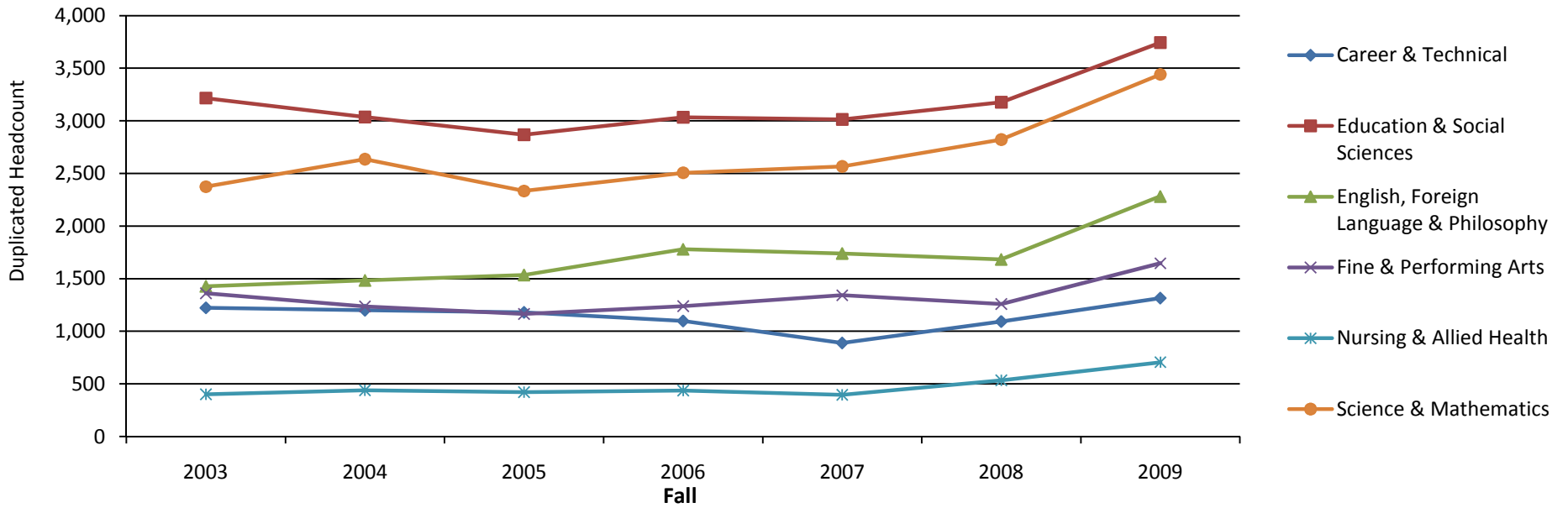
Student Success

										% Change	
Course		2003	2004	2005	2006	2007	2008	2009	Total Course Enrollment	2003-2009	2008-2009
Prefix	Description										
FS	Student Success	718	754	692	710	741	741	955	5,311	33.0%	28.9%

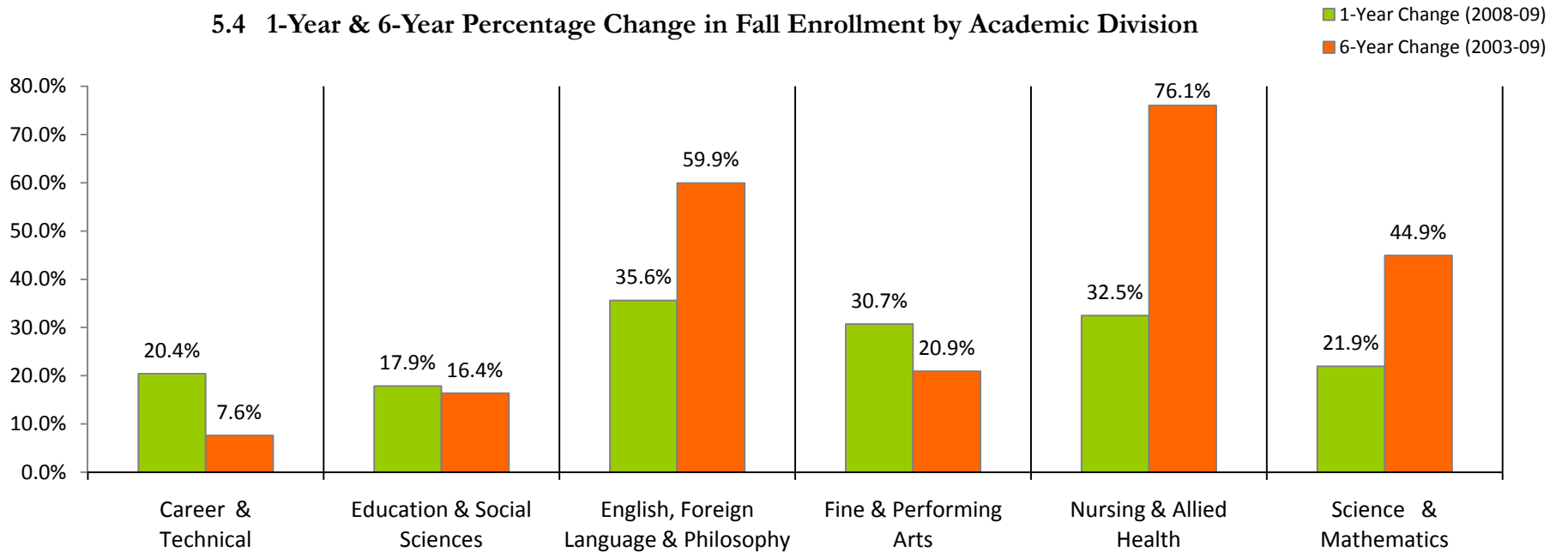
Source: Colleague Fall Census

Note: enrollment figures are duplicated student headcounts

5.3 Fall Enrollment Trend by Academic Division



5.4 1-Year & 6-Year Percentage Change in Fall Enrollment by Academic Division



5.5 Fall Dual Credit Course Enrollment

Dual Credit									% Change		
									Total Course Enrollment	2003-2009	2008-2009
Course Prefix	Description	2003	2004	2005	2006	2007	2008	2009	Total Course Enrollment	2003-2009	2008-2009
BI	Biology	40	18	52	56	70	40	46	322	15.0%	15.0%
CT	Communication, Media & Theatre	32	30	66	67	82	92	79	448	146.9%	-14.1%
CV	Civilization	--	--	--	--	--	15	--	15	na	na
EN	English	73	46	70	65	47	76	62	439	-15.1%	-18.4%
GL	Geology	--	--	--	12	20	18	20	70	na	11.1%
HI	History	127	133	91	106	116	110	138	821	8.7%	25.5%
MT	Mathematics	113	104	132	152	151	165	160	977	41.6%	-3.0%
PE	Physical Education	--	--	--	3	--	--	7	10	na	na
PY	Psychology	36	22	39	56	30	28	16	227	-55.6%	-42.9%
SO	Sociology	35	37	29	48	83	46	57	335	62.9%	23.9%
Total Course Enrollment in Dual Credit		456	390	479	565	599	590	585	3,664	28.3%	-0.8%

Dual Technical Credit									% Change		
									Total Course Enrollment	2003-2009	2008-2009
Course Prefix	Description	2003	2004	2005 ⁽¹⁾	2006	2007	2008	2009	Total Course Enrollment	2003-2009	2008-2009
AC	Accounting	4	--	116	8	--	--	--	128	na	na
AI	HVAC/R	36	18	--	--	--	--	--	54	na	na
AR	Art	9	5	3	2	42	42	38	141	322.2%	-9.5%
AT	Automotive Technology	13	72	86	65	143	139	102	620	684.6%	-26.6%
BC	Building Construction Technology	36	93	82	82	96	40	31	460	-13.9%	-22.5%
BT	Business Technology	85	167	290	64	93	31	49	779	-42.4%	58.1%
BU	Business	--	45	23	7	8	14	17	114	na	21.4%
CS	Computer Information Systems	21	28	41	36	47	20	11	204	-47.6%	-45.0%
DF	Drafting & Design	33	45	69	72	76	78	9	382	-72.7%	-88.5%
ED	Education	--	--	--	--	9	7	9	25	na	28.6%
EM	Emergency Medical Technology/Paramedic	--	--	--	16	29	15	--	60	na	na
GD	Graphic Design	28	25	67	45	135	122	57	479	103.6%	-53.3%
HM	Hospitality	--	7	--	--	--	--	--	7	na	na
IE	Industrial Engineering Technology	10	11	13	9	8	--	--	51	na	na
MA	Precision Machining	40	64	74	56	82	44	38	398	-5.0%	-13.6%
WL	Welding	6	41	33	59	80	31	64	314	966.7%	106.5%
Total Course Enrollment in Dual Technical Credit		321	621	897	521	848	583	425	4,216	32.4%	-27.1%

Source: Colleague Fall Census

Notes:

- (1) The increase for Dual Technical Credit enrollment in Fall 2005 was due to a temporary change in the enrollment process
- (2) Enrollment figures are duplicated student headcounts

5.6 1-Year & 6-Year Percentage Change in Dual Credit Enrollment

