

---

# Section 1

## Student Characteristics

---

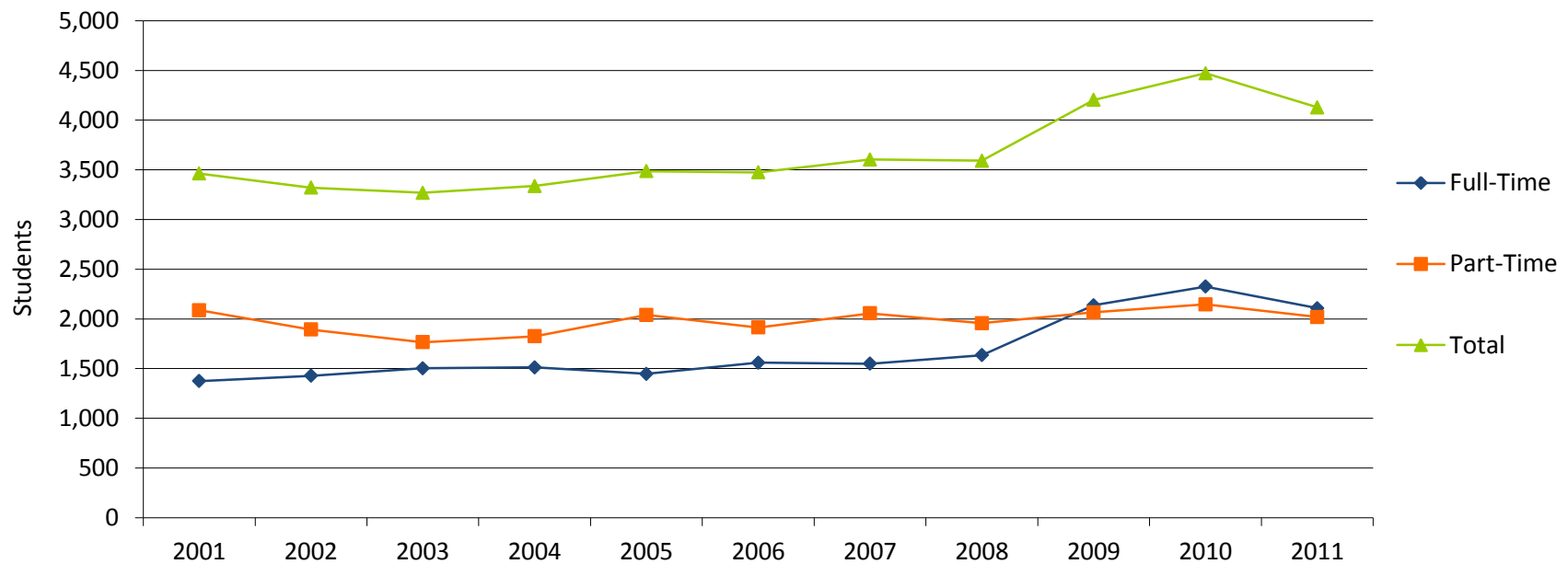
### 1.1 Fall 2011 Student Characteristics

	Freshmen	Sophomore	Other	Dual Credit/ Dual Enrolled	Dual Tech Credit	Total	% of Total
<b>Total</b>	2,083	1,173	343	331	197	4,127	100.0%
<b>Gender</b>							
Male	826	441	87	122	158	1,634	39.6%
Female	1,257	732	256	209	39	2,493	60.4%
<b>Enrollment Status</b>							
Full-Time	1,317	672	114	0	5	2,108	51.1%
Part-Time	766	501	229	331	192	2,019	48.9%
<b>Developmental Courses</b>							
1 course	612	94	9	0	0	715	17.3%
2 courses	207	6	0	0	0	213	5.2%
3+ courses	142	1	0	0	0	143	3.5%
<b>Location</b>							
In-District	1,230	723	235	275	103	2,566	62.2%
Out-of-District	843	448	108	56	94	1,549	37.5%
Out-of-State	7	0	0	0	0	7	0.2%
International	2	2	0	0	0	4	0.1%
Unknown	1	0	0	0	0	1	0.0%
<b>Age</b>							
< 18	57	3	0	286	181	527	12.8%
18-19	956	171	0	45	16	1,188	28.8%
20-21	306	336	56	0	0	698	16.9%
22-24	160	155	72	0	0	387	9.4%
25-29	178	161	56	0	0	395	9.6%
30-34	131	106	40	0	0	277	6.7%
35-39	91	77	39	0	0	207	5.0%
40-49	124	108	57	0	0	289	7.0%
50-64	45	51	21	0	0	117	2.8%
65 and older	34	5	2	0	0	41	1.0%
Unknown	1	0	0	0	0	1	0.0%
<b>Race/Ethnicity</b>							
American Indian/Alaska Native	5	6	3	0	2	16	0.4%
Asian	3	5	1	2	0	11	0.3%
Black or African American	22	12	0	1	0	35	0.8%
Hispanic	19	10	1	3	1	34	0.8%
Native Hawaiian/Pacific Islander	2	1	0	0	0	3	0.1%
Nonresident Alien	0	1	0	0	0	1	0.0%
Race/Ethnicity Unknown	38	18	3	12	7	78	1.9%
Two or more races	4	1	0	0	1	6	0.1%
White	1,990	1,119	335	313	186	3,943	95.5%

Source: Colleague Fall Census

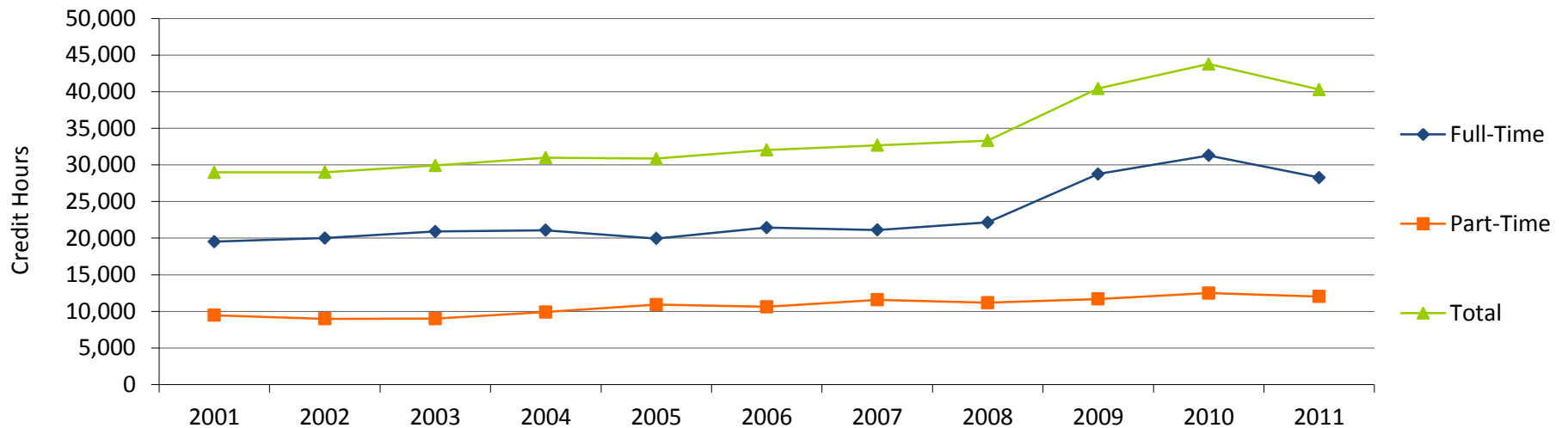
## 1.2 Fall Credit Enrollment By Enrollment Status

	2001	2002	2003	2004	2005	2006	2007	2008	2009	2010	2011	% Change	
												2001-2011	2010-2011
<b>Total</b>	3,462	3,320	3,269	3,337	3,486	3,474	3,604	3,591	4,203	4,471	4,127	19.2%	-7.7%
<b>Headcount</b>													
Full-Time	1,375	1,428	1,503	1,512	1,447	1,560	1,549	1,635	2,137	2,325	2,108	53.3%	-9.3%
Part-Time	2,087	1,892	1,766	1,825	2,039	1,914	2,055	1,956	2,066	2,146	2,019	-3.3%	-5.9%
<b>Percentages</b>													
Full-Time	39.7%	43.0%	46.0%	45.3%	41.5%	44.9%	43.0%	45.5%	50.8%	52.0%	51.1%		
Part-Time	60.3%	57.0%	54.0%	54.7%	58.5%	55.1%	57.0%	54.5%	49.2%	48.0%	48.9%		



### 1.3 Fall Credit Hours

	2001	2002	2003	2004	2005	2006	2007	2008	2009	2010	2011	% Change	
												2001-2011	2010-2011
Total	28,989	28,993	29,912	30,989	30,861	32,046	32,677	33,328	40,444	43,787	40,291	39.0%	-8.0%
<b>Credit Hours</b>													
Full-Time	19,512	20,011	20,911	21,083	19,950	21,437	21,109	22,150	28,756	31,288	28,268	44.9%	-9.7%
Part-Time	9,477	8,982	9,001	9,906	10,911	10,609	11,568	11,178	11,687	12,498	12,022	26.9%	-3.8%
<b>Percentages</b>													
Full-Time	67.3%	69.0%	69.9%	68.0%	64.6%	66.9%	64.6%	66.5%	71.1%	71.5%	70.2%		
Part-Time	32.7%	31.0%	30.1%	32.0%	35.4%	33.1%	35.4%	33.5%	28.9%	28.5%	29.8%		

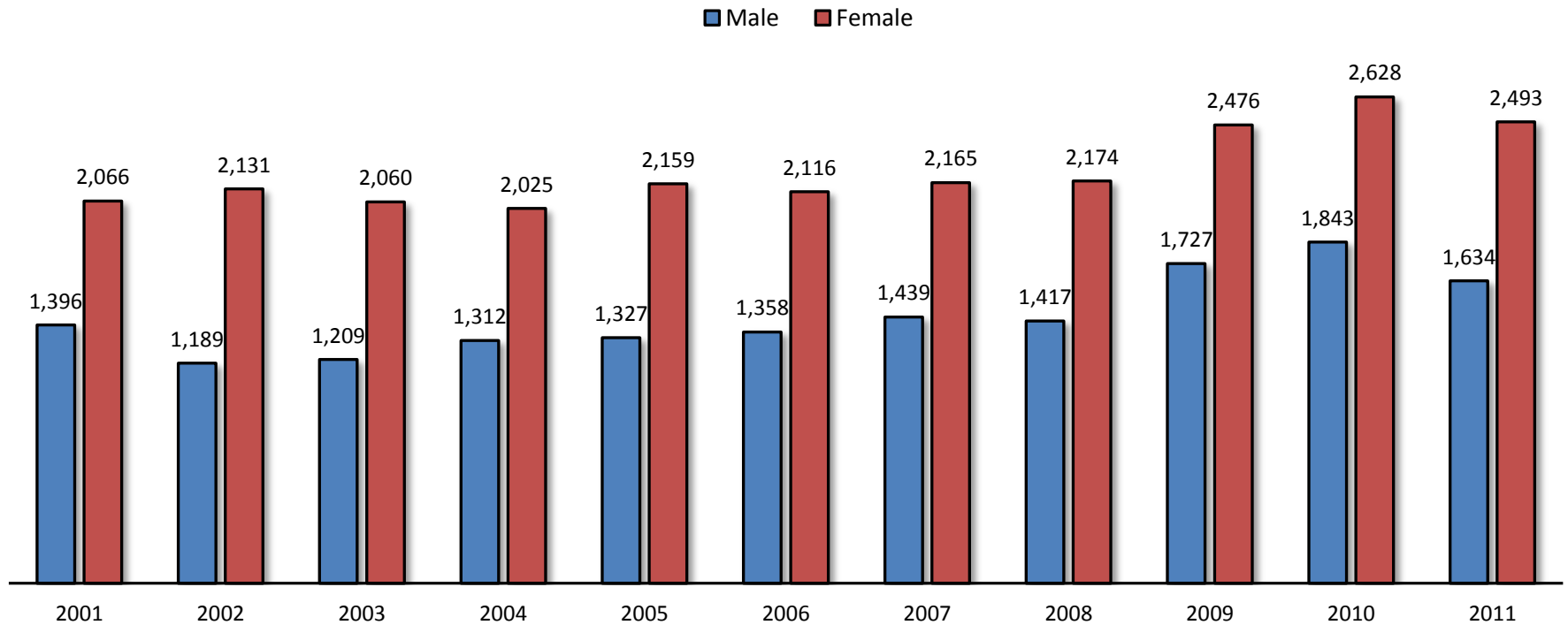


### 1.4 Fall Full-Time Equivalent (FTE) Enrollment

	2001	2002	2003	2004	2005	2006	2007	2008	2009	2010	2011	% Change	
												2001-2011	2010-2011
FTE	1,932	1,934	1,994	2,066	2,057	2,136	2,178	2,222	2,696	2,919	2,686	39.0%	-8.0%

### 1.5 Fall Credit Enrollment By Gender

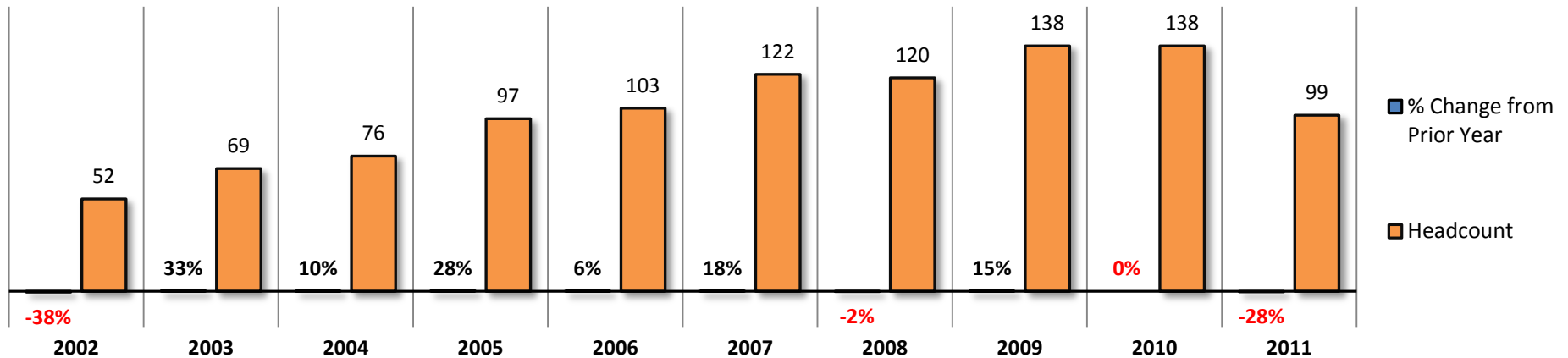
	2001	2002	2003	2004	2005	2006	2007	2008	2009	2010	2011	% Change	
												2001-2011	2010-2011
<b>Total</b>	3,462	3,320	3,269	3,337	3,486	3,474	3,604	3,591	4,203	4,471	4,127	19.2%	-7.7%
<b>Headcount</b>													
Male	1,396	1,189	1,209	1,312	1,327	1,358	1,439	1,417	1,727	1,843	1,634	17.0%	-11.3%
Female	2,066	2,131	2,060	2,025	2,159	2,116	2,165	2,174	2,476	2,628	2,493	20.7%	-5.1%
<b>Percentages</b>													
Male	40.3%	35.8%	37.0%	39.3%	38.1%	39.1%	39.9%	39.5%	41.1%	41.2%	39.6%		
Female	59.7%	64.2%	63.0%	60.7%	61.9%	60.9%	60.1%	60.5%	58.9%	58.8%	60.4%		



## 1.6 Fall Credit Enrollment By Ethnicity

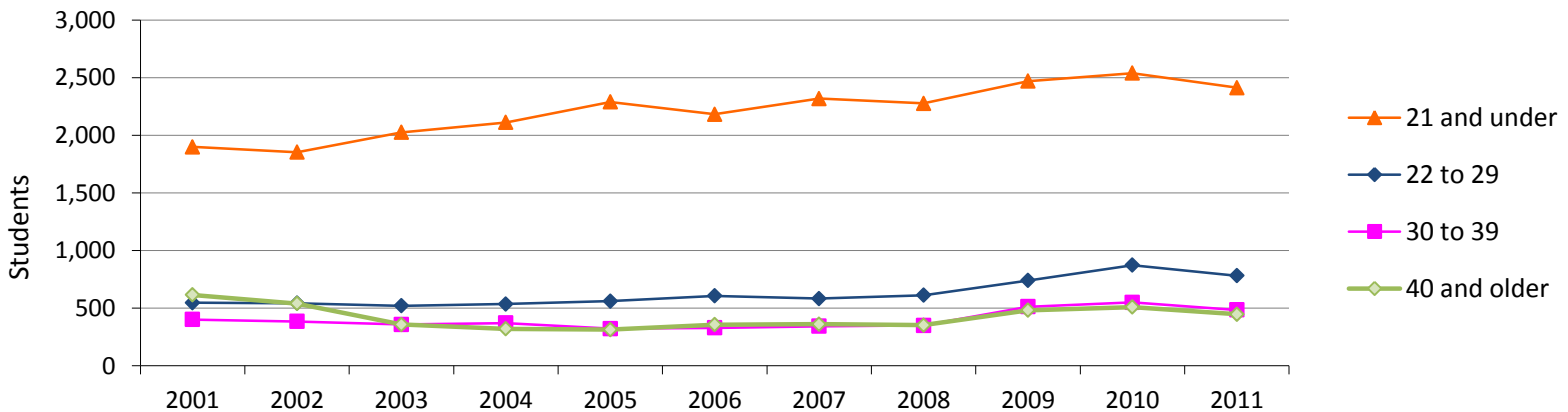
												% Change	
	2001	2002	2003	2004	2005	2006	2007	2008	2009	2010	2011	2001-2011	2010-2011
Total	3,462	3,320	3,269	3,337	3,486	3,474	3,604	3,591	4,203	4,471	4,127	19.2%	-7.7%
<b>Race/Ethnicity*</b>													
American Indian/Alaska Native	13	5	5	10	14	13	15	11	14	19	16	23.1%	-15.8%
Asian	21	10	20	22	27	24	21	20	23	12	11	-47.6%	-8.3%
Black or African American	32	18	20	18	21	26	36	46	46	47	35	9.4%	-25.5%
Hispanic	18	19	24	26	35	40	50	43	54	57	34	88.9%	-40.4%
Native Hawaiian/Pacific Islander	na	na	na	na	na	na	na	na	1	3	3	na	0.0%
Nonresident Alien	0	0	1	1	1	5	0	3	3	1	1	na	0.0%
Race/Ethnicity Unknown	0	133	102	110	320	283	225	160	124	93	78	na	-16.1%
Two or more races	na	na	na	na	na	na	na	na	4	6	6	na	0.0%
White	3,378	3,135	3,097	3,150	3,068	3,083	3,257	3,308	3,934	4,233	3,943	16.7%	-6.9%
<b>Percentages</b>													
American Indian/Alaska Native	0.4%	0.2%	0.2%	0.3%	0.4%	0.4%	0.4%	0.3%	0.3%	0.4%	0.4%		
Asian	0.6%	0.3%	0.6%	0.7%	0.8%	0.7%	0.6%	0.6%	0.5%	0.3%	0.3%		
Black or African American	0.9%	0.5%	0.6%	0.5%	0.6%	0.7%	1.0%	1.3%	1.1%	1.1%	0.8%		
Hispanic	0.5%	0.6%	0.7%	0.8%	1.0%	1.2%	1.4%	1.2%	1.3%	1.3%	0.8%		
Native Hawaiian/Pacific Islander	na	na	na	na	na	na	na	na	0.0%	0.1%	0.1%		
Nonresident Alien	0.0%	0.0%	0.0%	0.0%	0.0%	0.1%	0.0%	0.1%	0.1%	0.0%	0.0%		
Race/Ethnicity Unknown	0.0%	4.0%	3.1%	3.3%	9.2%	8.1%	6.2%	4.5%	3.0%	2.1%	1.9%		
Two or more races	na	na	na	na	na	na	na	na	0.1%	0.1%	0.1%		
White	97.6%	94.4%	94.7%	94.4%	88.0%	88.7%	90.4%	92.1%	93.6%	94.7%	95.5%		

### Minority Enrollment Trends



## 1.7 Fall Credit Enrollment by Age

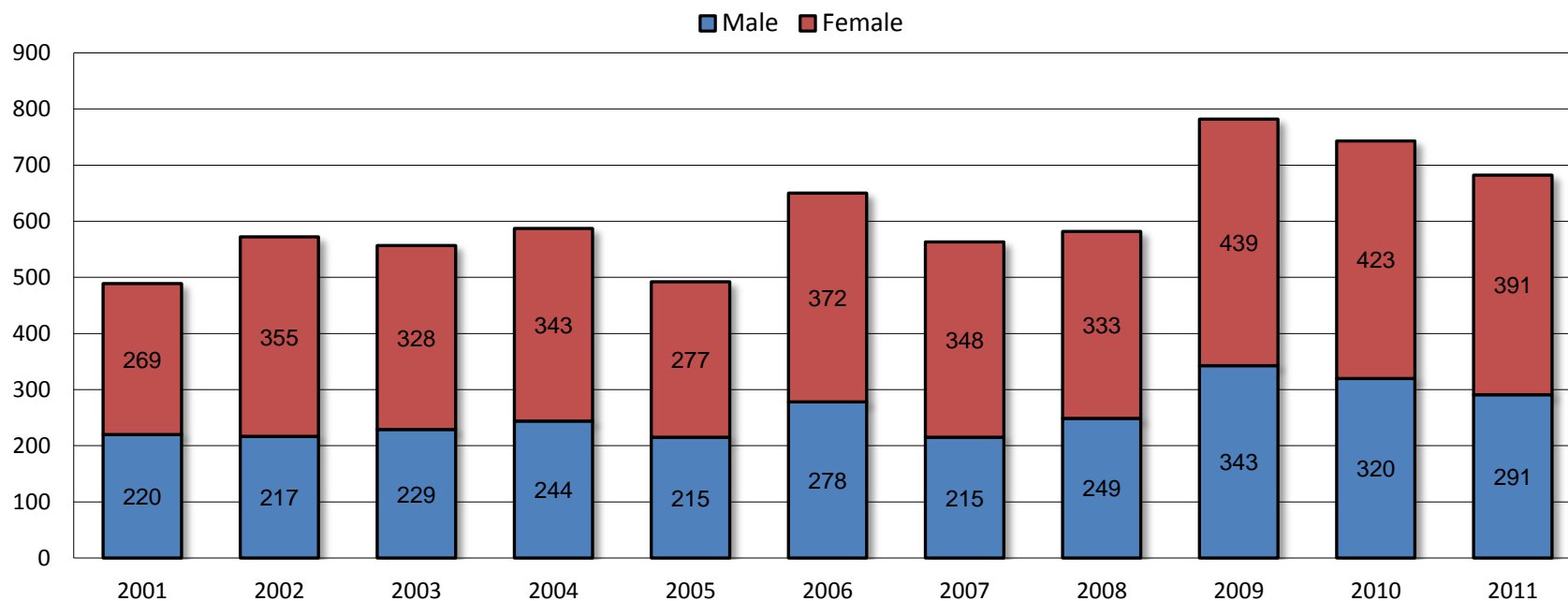
												% Change	
	2001	2002	2003	2004	2005	2006	2007	2008	2009	2010	2011	2001-2011	2010-2011
Total	3,462	3,320	3,269	3,337	3,486	3,474	3,604	3,591	4,203	4,471	4,127	19.2%	-7.7%
<b>Age Category</b>													
<18	424	363	516	566	802	612	713	628	630	581	527	24.3%	-9.3%
18-19	966	1,001	1,006	1,052	1,019	1,078	1,098	1,100	1,228	1,297	1,188	23.0%	-8.4%
20-21	509	489	503	494	469	493	507	549	612	661	698	37.1%	5.6%
22-24	265	281	274	293	301	306	278	300	368	435	387	46.0%	-11.0%
25-29	282	262	246	242	259	300	305	312	371	438	395	40.1%	-9.8%
30-34	203	188	182	211	187	186	188	184	285	309	277	36.5%	-10.4%
35-39	198	196	176	159	135	142	154	166	227	240	207	4.5%	-13.8%
40-49	325	278	244	244	227	236	240	230	315	322	289	-11.1%	-10.2%
50-64	142	111	70	56	65	83	79	82	126	142	117	-17.6%	-17.6%
65 and older	148	151	44	20	22	38	42	40	41	45	41	-72.3%	-8.9%
Unknown	0	0	8	0	0	0	0	0	0	1	1	na	0.0%
<b>Percentages</b>													
<18	12%	11%	16%	17%	23%	18%	20%	17%	15%	13%	13%		
18-19	28%	30%	31%	32%	29%	31%	30%	31%	29%	29%	29%		
20-21	15%	15%	15%	15%	13%	14%	14%	15%	15%	15%	17%		
22-24	8%	8%	8%	9%	9%	9%	8%	8%	9%	10%	9%		
25-29	8%	8%	8%	7%	7%	9%	8%	9%	9%	10%	10%		
30-34	6%	6%	6%	6%	5%	5%	5%	5%	7%	7%	7%		
35-39	6%	6%	5%	5%	4%	4%	4%	5%	5%	5%	5%		
40-49	9%	8%	7%	7%	7%	7%	7%	6%	7%	7%	7%		
50-64	4%	3%	2%	2%	2%	2%	2%	2%	3%	3%	3%		
65 and older	4%	5%	1%	1%	1%	1%	1%	1%	1%	1%	1%		
Unknown	0%	0%	0%	0%	0%	0%	0%	0%	0%	0%	0%		



Source: IPEDS

### 1.8 Fall Credit Enrollment By Full-Time, First-Time, Degree/Certificate-Seeking Students

	2001	2002	2003	2004	2005	2006	2007	2008	2009	2010	2011	% Change	
												2001-2011	2010-2011
<b>Total*</b>	489	572	557	587	492	650	563	582	782	743	682	39.5%	-8.2%
<b>Headcount</b>													
Male	220	217	229	244	215	278	215	249	343	320	291	32.3%	-9.1%
Female	269	355	328	343	277	372	348	333	439	423	391	45.4%	-7.6%
<b>Percentages</b>													
Male	45.0%	37.9%	41.1%	41.6%	43.7%	42.8%	38.2%	42.8%	43.9%	43.1%	42.7%		
Female	55.0%	62.1%	58.9%	58.4%	56.3%	57.2%	61.8%	57.2%	56.1%	56.9%	57.3%		

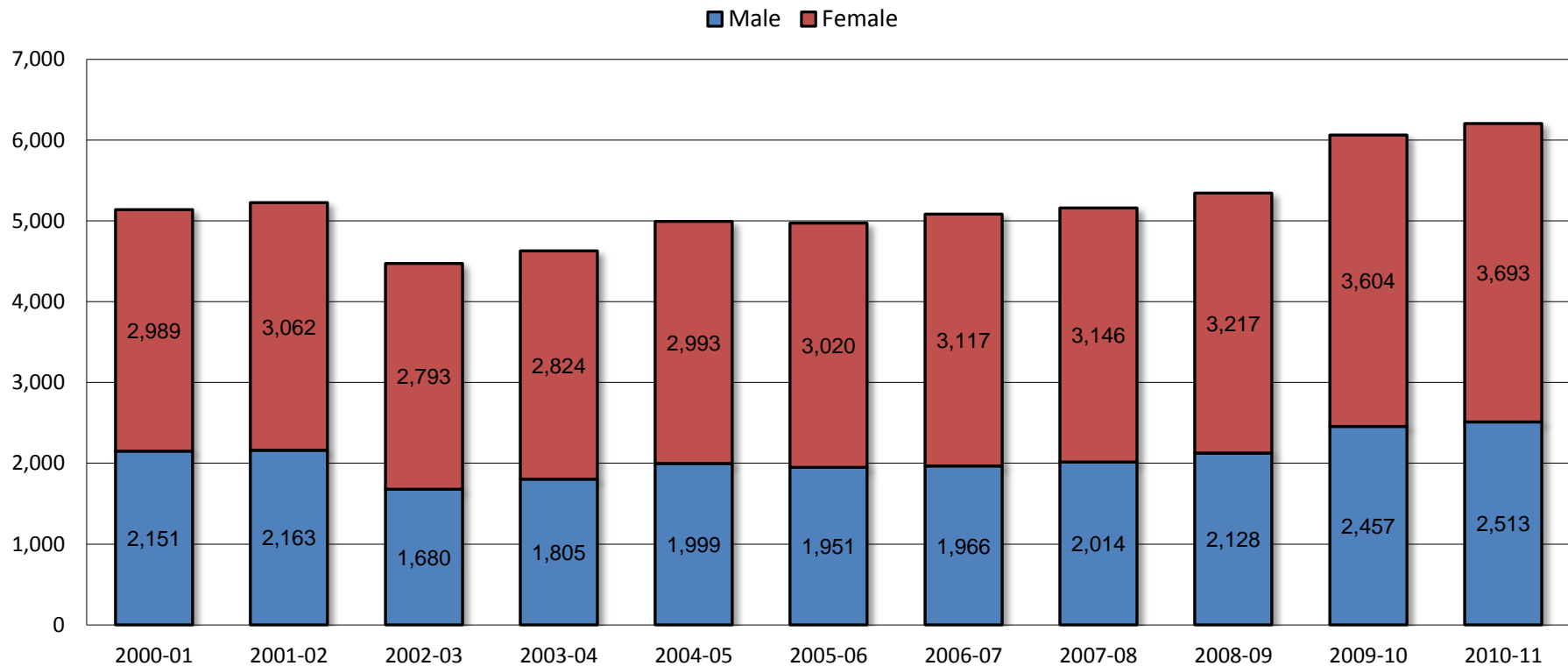


Source: IPEDS

\* Represents the IPEDS Graduation Rate Survey cohort

## 1.9 Twelve-Month\* Unduplicated Headcount

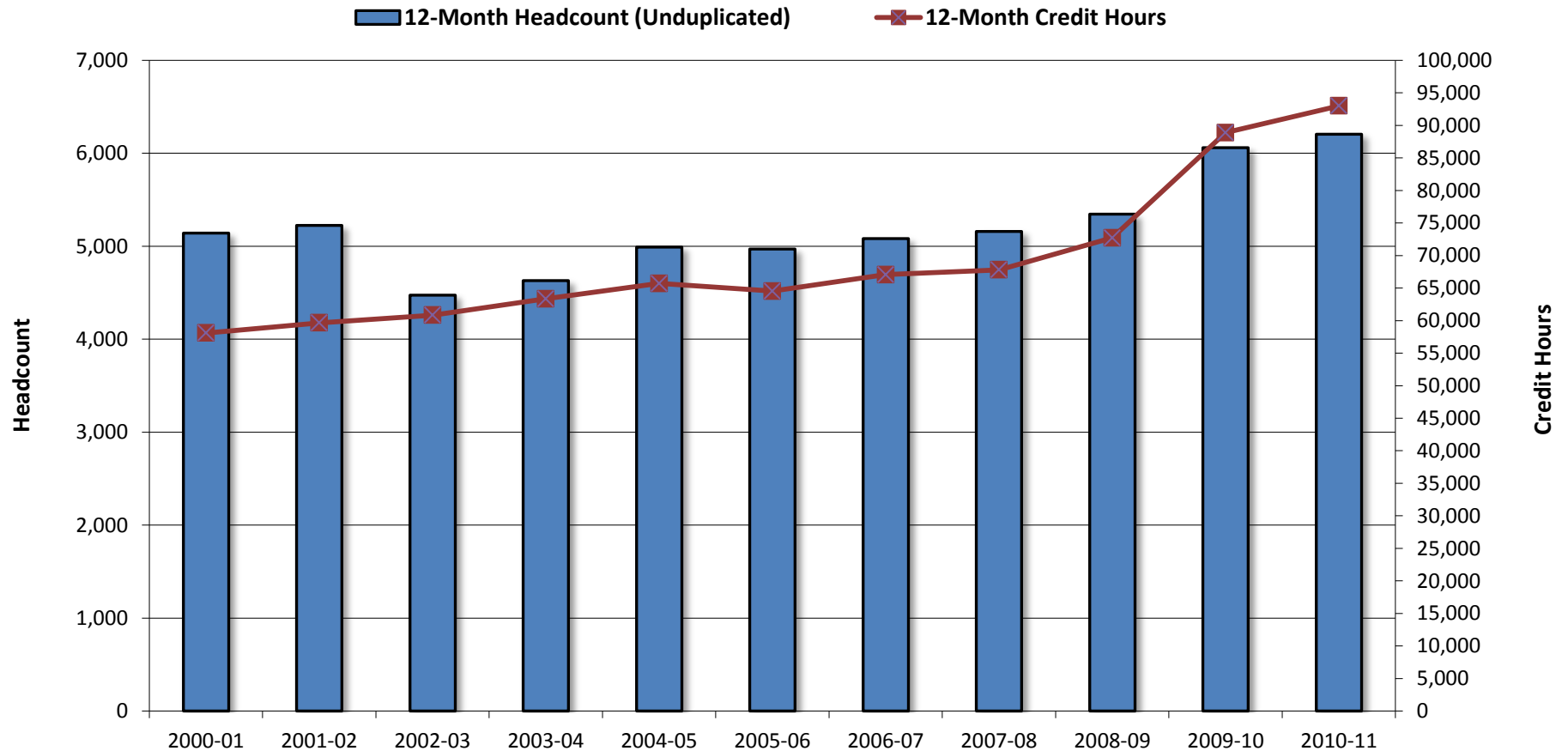
												% Change	
	2000-01	2001-02	2002-03	2003-04	2004-05	2005-06	2006-07	2007-08	2008-09	2009-10	2010-11	2000-01 to 2010-11	2009-10 to 2010-11
<b>Headcount</b>													
Total	5,140	5,225	4,473	4,629	4,992	4,971	5,083	5,160	5,345	6,061	6,206	20.7%	2.4%
Male	2,151	2,163	1,680	1,805	1,999	1,951	1,966	2,014	2,128	2,457	2,513	16.8%	2.3%
Female	2,989	3,062	2,793	2,824	2,993	3,020	3,117	3,146	3,217	3,604	3,693	23.6%	2.5%



Source: IPEDS  
\* July 1 - June 30

## 1.10 Twelve-Month\* Credit Hours & Full-Time Equivalent (FTE) Enrollment

	2000-01	2001-02	2002-03	2003-04	2004-05	2005-06	2006-07	2007-08	2008-09	2009-10	2010-11	% Change	
												2000-01 to 2010-11	2009-10 to 2010-11
Credit Hours	58,104	59,658	60,831	63,347	65,715	64,532	67,072	67,794	72,729	88,883	93,012	60.1%	4.6%
FTE	1,937	1,989	2,028	2,112	2,191	2,151	2,236	2,260	2,424	2,963	3,100	60.1%	4.6%

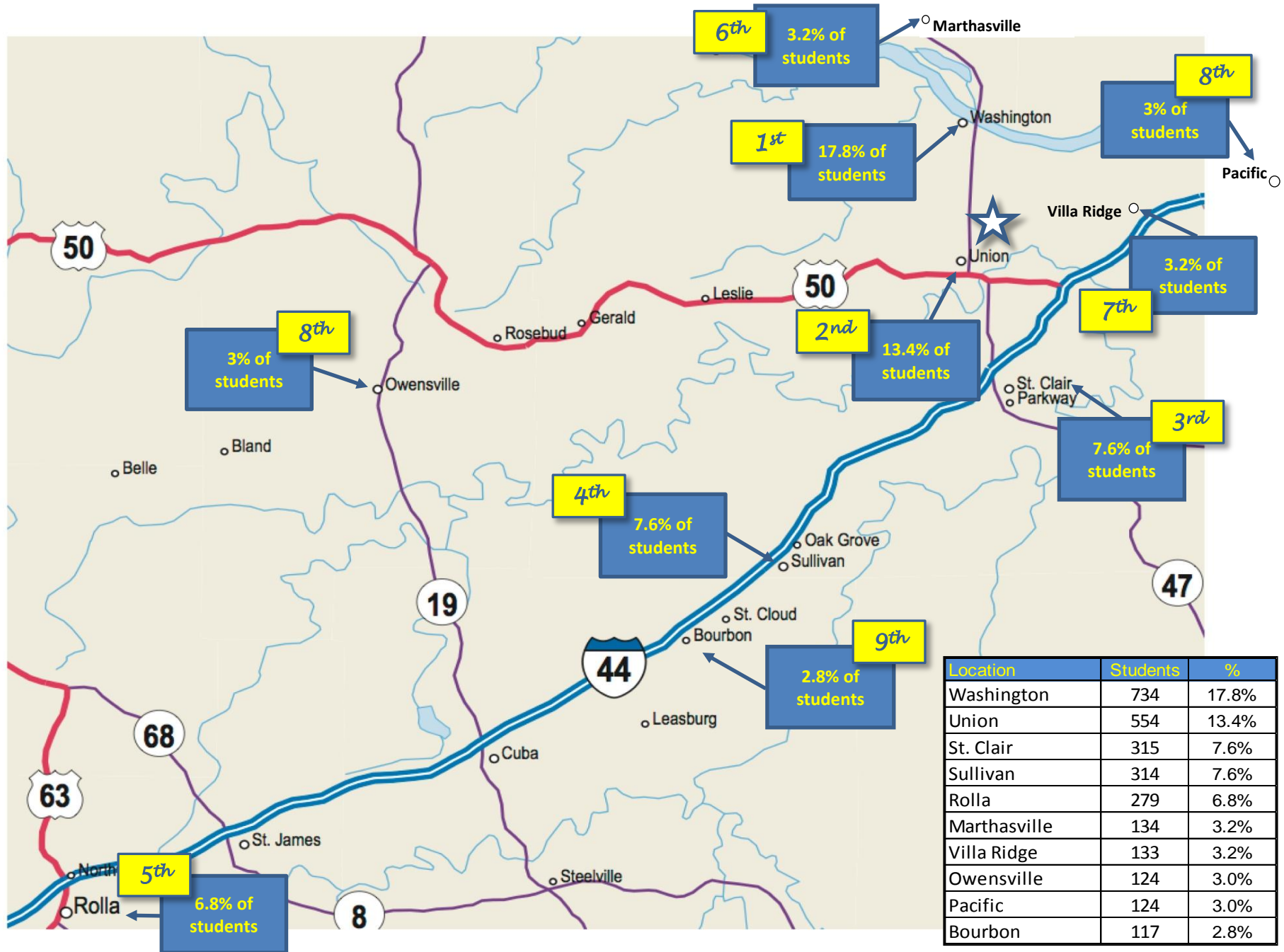


Source: IPEDS

\* July 1 - June 30

Note: FTE for twelve-month instructional activity = twelve-month credit hours/30

### 1.11 Fall 2011 Enrollment by Zip Code



### 1.12 Fall Enrollment by Day & Evening Students

	2003	2004	2005	2006	2007	2008	2009	2010	2011	% Change	
										2003-2011	2010-2011
Total	3,269	3,337	3,486	3,474	3,604	3,591	4,203	4,471	4,127	26.2%	-7.7%
<b>Course Time(s)</b>											
Day Only	1,875	1,957	1,828	1,872	2,053	2,108	2,461	2,679	2,347	25.2%	-12.4%
Evening Only	496	426	469	507	491	503	461	437	430	-13.3%	-1.6%
Day & Evening	898	954	1,189	1,095	1,060	980	1,281	1,355	1,350	50.3%	-0.4%

