
Section 10

Continuing Education

10.1 Fall Continuing Education Student Characteristics

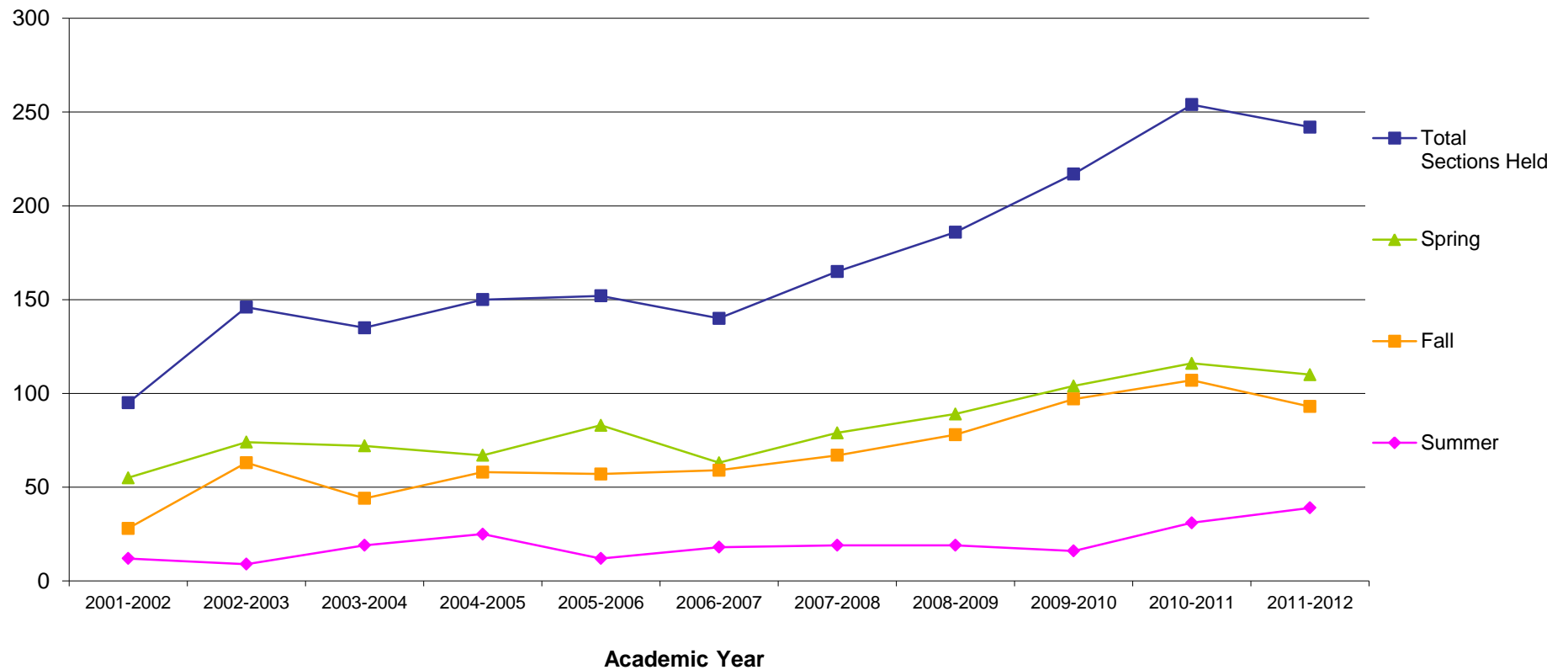
	Fall 2004	Fall 2005	Fall 2006	Fall 2007	Fall 2008	Fall 2009	Fall 2010	Fall 2011
Total	261	372	282	352	271	494	550	488
Gender								
Male	95	131	104	109	95	120	169	122
Female	166	241	178	243	176	374	381	366
Enrollment Status (based on credit-bearing courses)								
Full-Time	9	8	10	6	2	25	22	17
Part-Time	9	8	11	5	7	11	20	11
Location								
In-District	181	297	204	263	215	400	449	383
Out-of-District	76	72	76	83	51	90	100	104
Out-of-State	0	2	0	0	0	0	0	0
International	0	0	0	0	0	0	0	0
Other	4	1	2	6	5	4	1	1
Age								
< 18	21	29	64	75	90	82	70	65
18-19	2	4	2	8	2	14	14	11
20-21	8	10	9	5	3	13	7	14
22-24	6	17	8	4	7	15	9	10
25-29	12	16	13	12	9	27	30	22
30-34	8	18	8	16	6	16	31	29
35-39	13	18	11	15	12	28	23	16
40-49	44	69	53	63	43	86	108	79
50-64	58	112	71	100	57	123	165	148
65 and older	46	74	34	47	35	74	71	73
Unknown	43	5	9	7	7	16	22	21
Race/Ethnicity								
American Indian/Alaska Native	0	0	2	0	0	1	1	0
Asian	0	0	0	1	0	0	0	0
Black or African American	0	1	1	0	1	1	2	3
Hispanic	0	0	0	1	1	2	1	1
Native Hawaiian/Pacific Islander	0	0	0	0	0	0	0	0
Nonresident Alien	0	0	0	0	0	0	0	0
Race/Ethnicity Unknown	100	149	117	175	159	253	277	259
Two or more races	0	0	0	0	0	0	0	0
White	161	222	162	175	110	237	269	225

Source: Colleague

Note: Data are based on end of fall term continuing education students.

10.2 Continuing Education Sections by Term

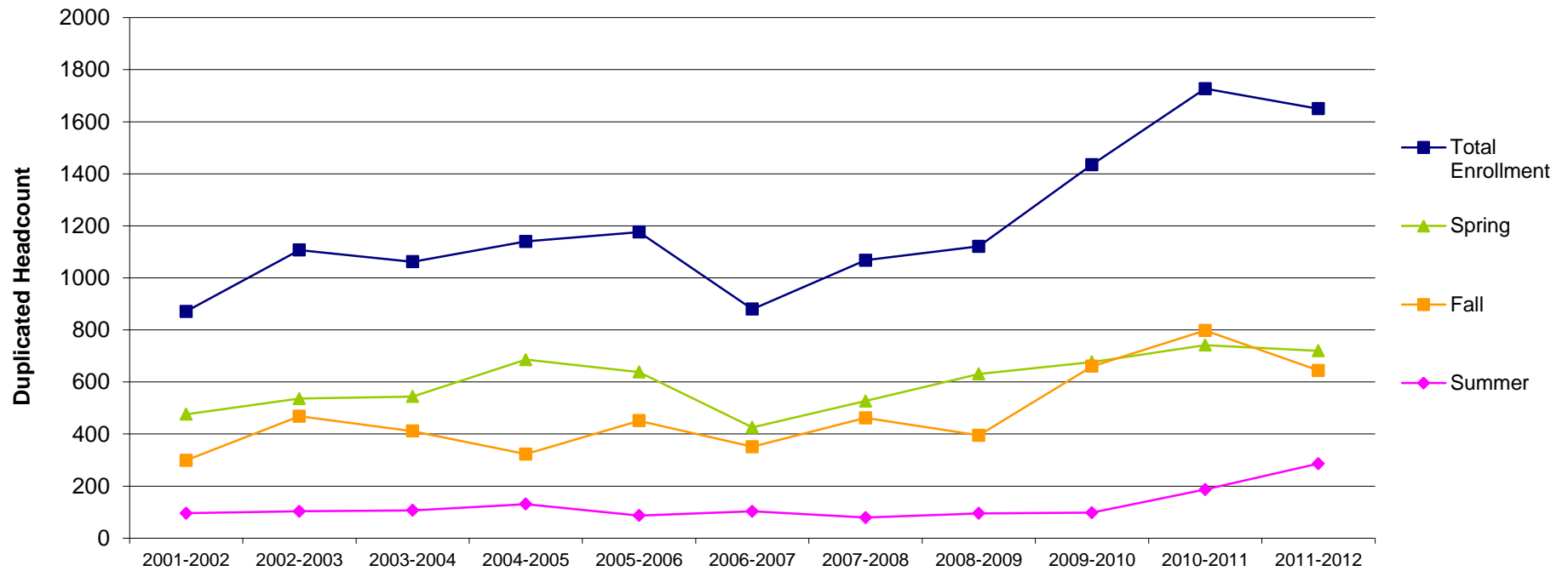
												% Change	
	2001-2002	2002-2003	2003-2004	2004-2005	2005-2006	2006-2007	2007-2008	2008-2009	2009-2010	2010-2011	2011-2012	2001-2002 to 2011-2012	2010-2011 to 2011-2012
Total Sections Held	95	146	135	150	152	140	165	186	217	254	242	154.7%	-4.7%
Summer	12	9	19	25	12	18	19	19	16	31	39	225.0%	25.8%
Fall	28	63	44	58	57	59	67	78	97	107	93	232.1%	-13.1%
Spring	55	74	72	67	83	63	79	89	104	116	110	100.0%	-5.2%



Source: Colleague (end of term data)

10.3 Continuing Education Enrollment

												% Change	
	2001-2002	2002-2003	2003-2004	2004-2005	2005-2006	2006-2007	2007-2008	2008-2009	2009-2010	2010-2011	2011-2012	2001-2002 to 2011-2012	2010-2011 to 2011-2012
Total Enrollment (duplicated)	871	1107	1062	1140	1176	880	1068	1121	1435	1727	1650	89.4%	-4.5%
Summer	96	103	107	131	87	103	79	95	98	187	286	197.9%	52.9%
Fall	299	468	411	323	451	351	462	395	660	798	644	115.4%	-19.3%
Spring	476	536	544	686	638	426	527	631	677	742	720	51.3%	-3.0%
Total Students (unduplicated)	721	941	846	817	868	660	723	741	1022	1103	1172	62.6%	6.3%
Summer	79	102	100	120	85	98	76	91	87	157	250	216.5%	59.2%
Fall	271	404	378	261	372	282	352	271	494	550	488	80.1%	-11.3%
Spring	417	472	447	544	508	364	417	478	536	517	526	26.1%	1.7%



Source: Colleague (end of term data)