
Section 4

Enrollment By Campus

Main Campus

4.1 Fall 2011 Main Campus Student Characteristics

	Freshmen	Sophomore	Other	Total	% of Total
Total	1,231	1,086	386	2,703	100.0%
Gender					
Male	535	431	116	1,082	40.0%
Female	696	655	270	1,621	60.0%
Enrollment Status					
Full-Time	817	707	184	1,708	63.2%
Part-Time	414	379	202	995	36.8%
Developmental Courses					
1 Course	307	113	12	432	16.0%
2 Courses	188	29	2	219	8.1%
3+ Courses	182	15	1	198	7.3%
Location					
In-District	900	789	277	1,966	72.7%
Out-of-District	324	293	109	726	26.9%
Out-of-State	5	2	0	7	0.3%
International	1	2	0	3	0.1%
Other	1	0	0	1	0.0%
Age					
<18	23	2	0	25	0.9%
18-19	631	261	6	898	33.2%
20-21	161	289	90	540	20.0%
22-24	77	122	64	263	9.7%
25-29	94	128	57	279	10.3%
30-34	75	81	46	202	7.5%
35-39	45	72	40	157	5.8%
40-49	70	83	55	208	7.7%
50-64	23	43	25	91	3.4%
65 and older	32	5	3	40	1.5%
Unknown	0	0	0	0	0.0%
Race/Ethnicity					
American Indian or Alaska Native	2	3	3	8	0.3%
Asian	1	4	1	6	0.2%
Black or African American	12	8	2	22	0.8%
Hispanic	7	9	2	18	0.7%
Native Hawaiian or Other Pacific Islander	2	0	0	2	0.1%
White	1,179	1,050	370	2,599	96.2%
Two or More Races	2	2	0	4	0.1%
Nonresident Alien	0	1	0	1	0.0%
Race and Ethnicity Unknown	26	9	8	43	1.6%

Source: Colleague Census Data

Notes: (1) Includes students enrolled in any credit bearing course located on the Main Campus (includes Main Campus ITV)
(2) Developmental coursework is for any ECC campus

4.2 Main Campus Headcount, Credit Hours & FTE by Academic Year

2010-2011	10/SU	10/FA	11/SP	2010-2011 Totals		
Headcount	983	2,948	2,726	Headcount*	6,657	Credit Hours 60,151.00
Credit Hours	4,276.00	29,328.00	26,547.00	Headcount**	3,830	Annual FTE 2,005
FTE	713	1,955	1,770			
2009-2010	09/SU	09/FA	10/SP	2009-2010 Totals		
Headcount	873	2,641	2,671	Headcount*	6,185	Credit Hours 56,607.00
Credit Hours	3,746.50	26,133.50	26,727.00	Headcount**	3,661	Annual FTE 1,887
FTE	624	1,742	1,782			
2008-2009	08/SU	08/FA	09/SP	2008-2009 Totals		
Headcount	719	2,143	2,156	Headcount*	5,018	Credit Hours 44,451.00
Credit Hours	2,960.00	20,593.00	20,898.00	Headcount**	3,027	Annual FTE 1,482
FTE	493	1,373	1,393			
2007-2008	07/SU	07/FA	08/SP	2007-2008 Totals		
Headcount	690	2,076	1,985	Headcount*	4,751	Credit Hours 41,734.50
Credit Hours	2,807.00	20,147.50	18,780.00	Headcount**	2,877	Annual FTE 1,391
FTE	468	1,343	1,252			
2006-2007	06/SU	06/FA	07/SP	2006-2007 Totals		
Headcount	717	2,130	2,012	Headcount*	4,859	Credit Hours 42,453.00
Credit Hours	2,993.50	20,348.50	19,111.00	Headcount**	2,897	Annual FTE 1,415
FTE	499	1,357	1,274			
2005-2006	05/SU	05/FA	06/SP	2005-2006 Totals		
Headcount	773	2,036	1,899	Headcount*	4,708	Credit Hours 41,450.00
Credit Hours	3,230.50	19,937.00	18,282.50	Headcount**	2,825	Annual FTE 1,382
FTE	538	1,329	1,219			
2004-2005	04/SU	04/FA	05/SP	2004-2005 Totals		
Headcount	722	2,085	1,920	Headcount*	4,727	Credit Hours 42,990.00
Credit Hours	3,086.50	21,081.00	18,822.50	Headcount**	2,814	Annual FTE 1,433
FTE	514	1,405	1,255			
2003-2004	03/SU	03/FA	04/SP	2003-2004 Totals		
Headcount	780	2,094	1,943	Headcount*	4,817	Credit Hours 43,219.00
Credit Hours	3,216.50	20,868.00	19,134.50	Headcount**	2,893	Annual FTE 1,441
FTE	536	1,391	1,276			
2002-2003	02/SU	02/FA	03/SP	2002-2003 Totals		
Headcount	856	2,204	1,944	Headcount*	5,004	Credit Hours 44,628.50
Credit Hours	3,705.00	21,769.50	19,154.00	Headcount**	3,057	Annual FTE 1,488
FTE	618	1,451	1,277			

*duplicated

**unduplicated

Notes:

(1) All data includes students who completed a course on the Main Campus (including ITV) with a verified grade.

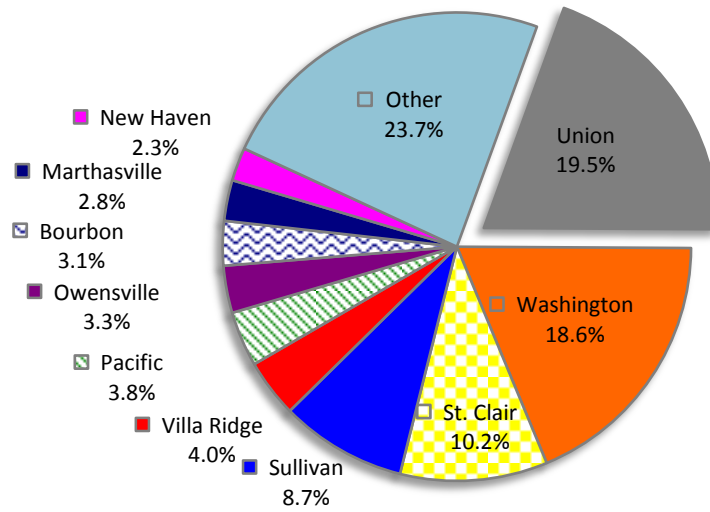
(2) FTE (Full-Time Equivalent): Fall and Spring = total semester hours divided by 15

Summer = total semester hours divided by 6

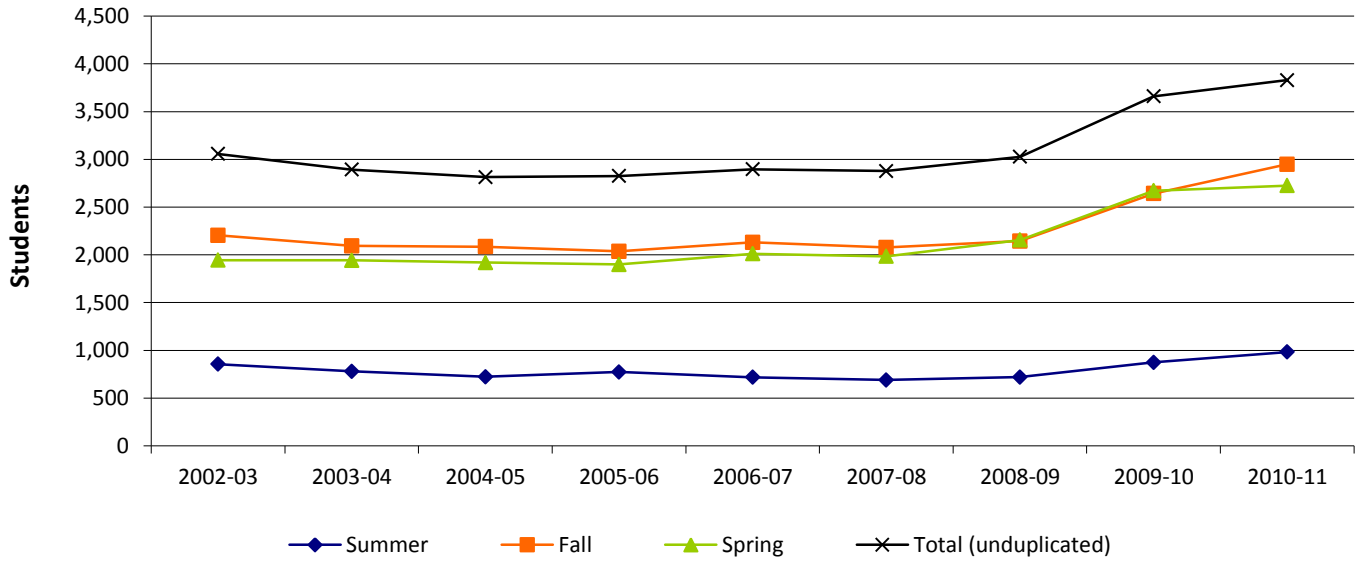
Annual = total academic year hours divided by 30

4.3 Main Campus Enrollment Summary

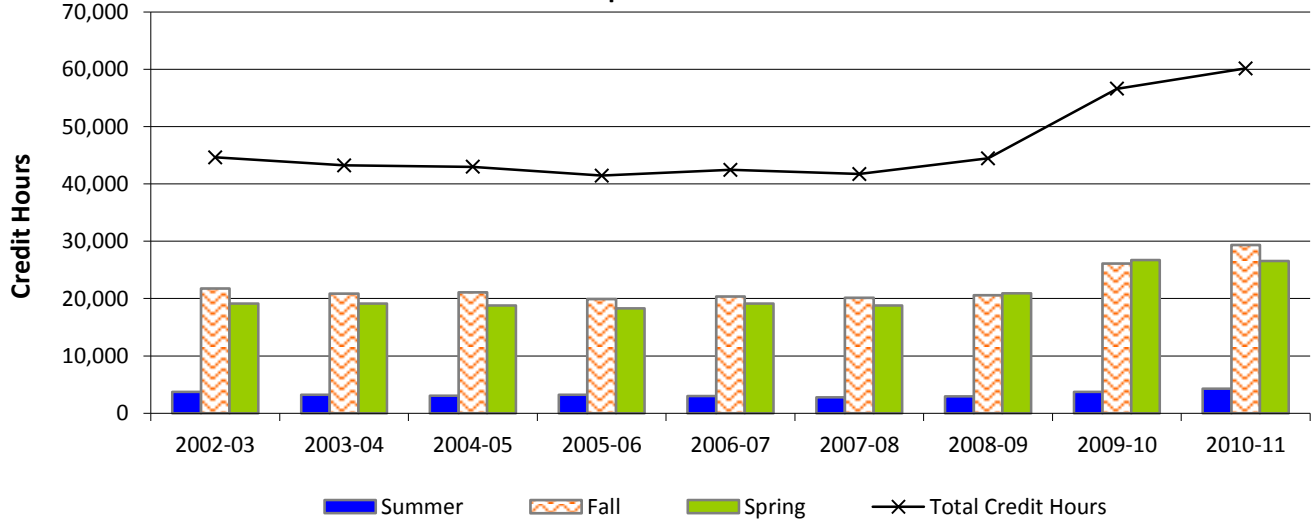
Top Zip Code Locations for Main Campus Students in Fall 2011



Main Campus Enrollment



Main Campus Credit Hours



ECC Washington

4.4 Fall 2011 ECC Washington Student Characteristics

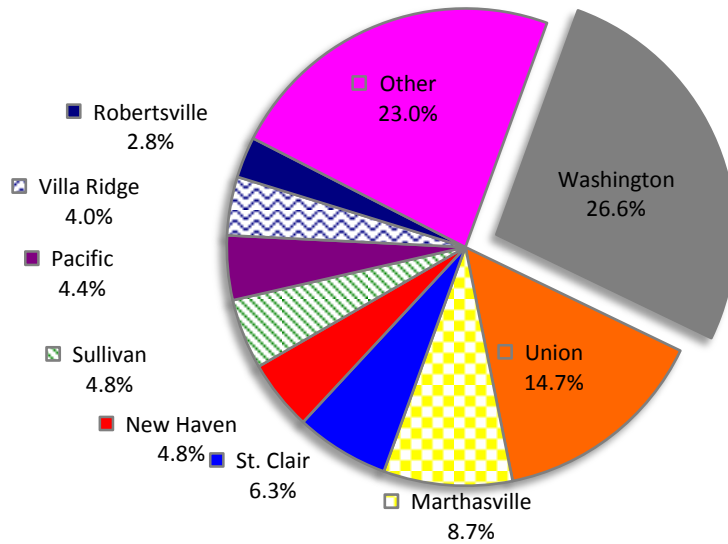
	Freshmen	Sophomore	Other	Total	% of Total
Total	111	112	29	252	100.0%
Gender					
Male	69	69	17	155	61.5%
Female	42	43	12	97	38.5%
Enrollment Status					
Full-Time	47	73	16	136	54.0%
Part-Time	64	39	13	116	46.0%
Developmental Courses					
1 Course	22	16	0	38	15.1%
2 Courses	13	4	1	18	7.1%
3+ Courses	6	3	0	9	3.6%
Location					
In-District	75	93	22	190	75.4%
Out-of-District	36	19	7	62	24.6%
Out-of-State	0	0	0	0	0.0%
International	0	0	0	0	0.0%
Other	0	0	0	0	0.0%
Age					
<18	0	2	0	2	0.8%
18-19	38	17	2	57	22.6%
20-21	17	27	5	49	19.4%
22-24	18	13	6	37	14.7%
25-29	6	9	3	18	7.1%
30-34	7	14	4	25	9.9%
35-39	12	8	2	22	8.7%
40-49	10	15	4	29	11.5%
50-64	2	7	2	11	4.4%
65 and older	1	0	1	2	0.8%
Unknown	0	0	0	0	0.0%
Race/Ethnicity					
American Indian or Alaska Native	0	0	1	1	0.4%
Asian	0	1	0	1	0.4%
Black or African American	1	1	0	2	0.8%
Hispanic	0	1	0	1	0.4%
Native Hawaiian or Other Pacific Island	0	0	0	0	0.0%
White	108	108	28	244	96.8%
Two or More Races	0	0	0	0	0.0%
Nonresident Alien	0	0	0	0	0.0%
Race and Ethnicity Unknown	2	1	0	3	1.2%

Source: Colleague Census Data

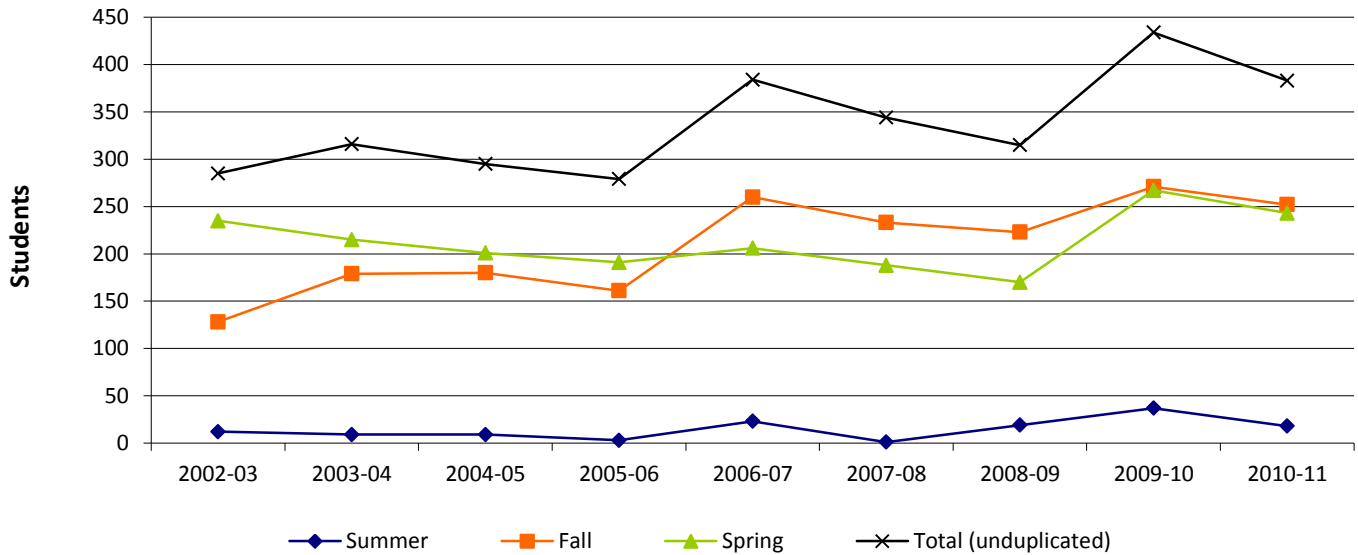
Notes: (1)Includes students enrolled in any credit bearing course located at the Washington site (includes ITV)
 (2)Developmental coursework is for any ECC location

4.6 ECC Washington Enrollment Summary

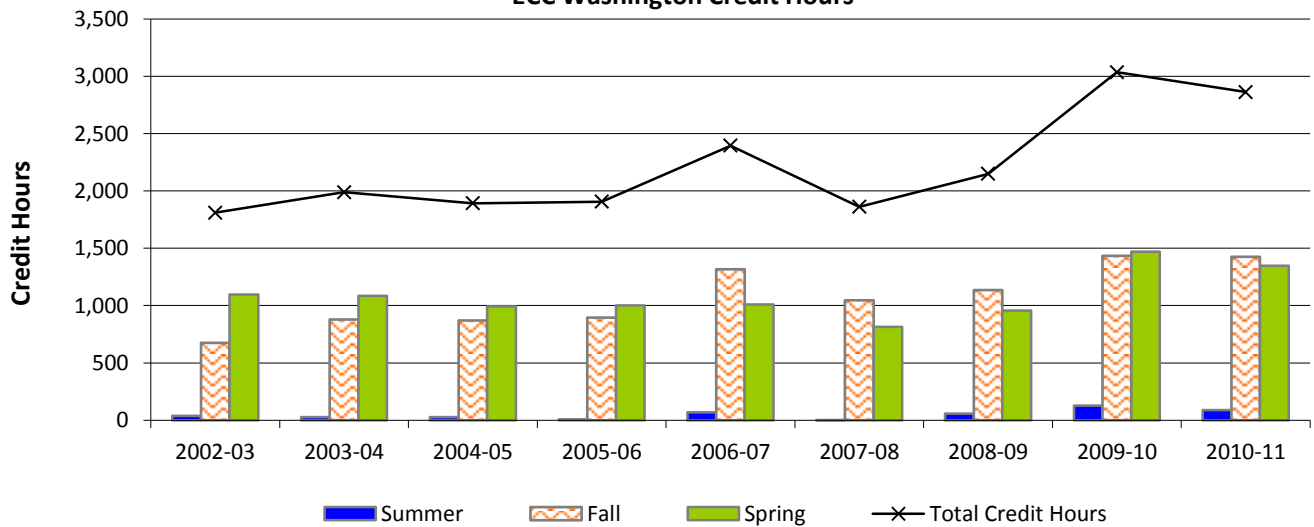
Top Zip Code Locations for ECC Washington Students in Fall 2011



ECC Washington Enrollment



ECC Washington Credit Hours



ECC Rolla

4.7 Fall 2011 ECC Rolla Student Characteristics

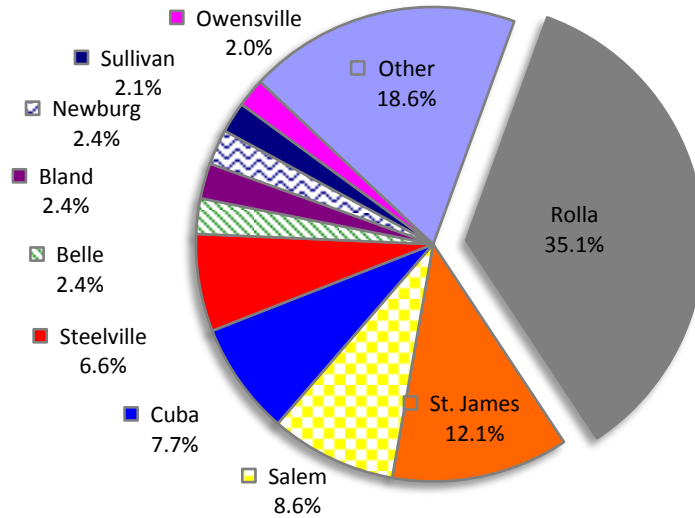
	Freshmen	Sophomore	Other	Total	% of Total
Total	332	249	82	663	100.0%
Gender					
Male	91	67	13	171	25.8%
Female	241	182	69	492	74.2%
Enrollment Status					
Full-Time	183	133	42	358	54.0%
Part-Time	149	116	40	305	46.0%
Developmental Courses					
1 Course	106	22	2	130	19.6%
2 Courses	59	4	0	63	9.5%
3+ Courses	42	2	0	44	6.6%
Location					
In-District	9	23	14	46	6.9%
Out-of-District	322	226	68	616	92.9%
Out-of-State	0	0	0	0	0.0%
International	1	0	0	1	0.2%
Other	0	0	0	0	0.0%
Age					
<18	6	1	0	7	1.1%
18-19	151	49	0	200	30.2%
20-21	47	58	24	129	19.5%
22-24	39	29	19	87	13.1%
25-29	33	46	16	95	14.3%
30-34	21	27	7	55	8.3%
35-39	11	14	6	31	4.7%
40-49	17	21	10	48	7.2%
50-64	7	4	0	11	1.7%
65 and older	0	0	0	0	0.0%
Unknown	0	0	0	0	0.0%
Race/Ethnicity					
American Indian or Alaska Native	2	2	1	5	0.8%
Asian	1	1	0	2	0.3%
Black or African American	7	3	0	10	1.5%
Hispanic	8	4	0	12	1.8%
Native Hawaiian or Other Pacific Islander	0	1	0	1	0.2%
White	310	229	81	620	93.5%
Two or More Races	1	0	0	1	0.2%
Nonresident Alien	0	0	0	0	0.0%
Race and Ethnicity Unknown	3	9	0	12	1.8%

Source: Colleague Census Data

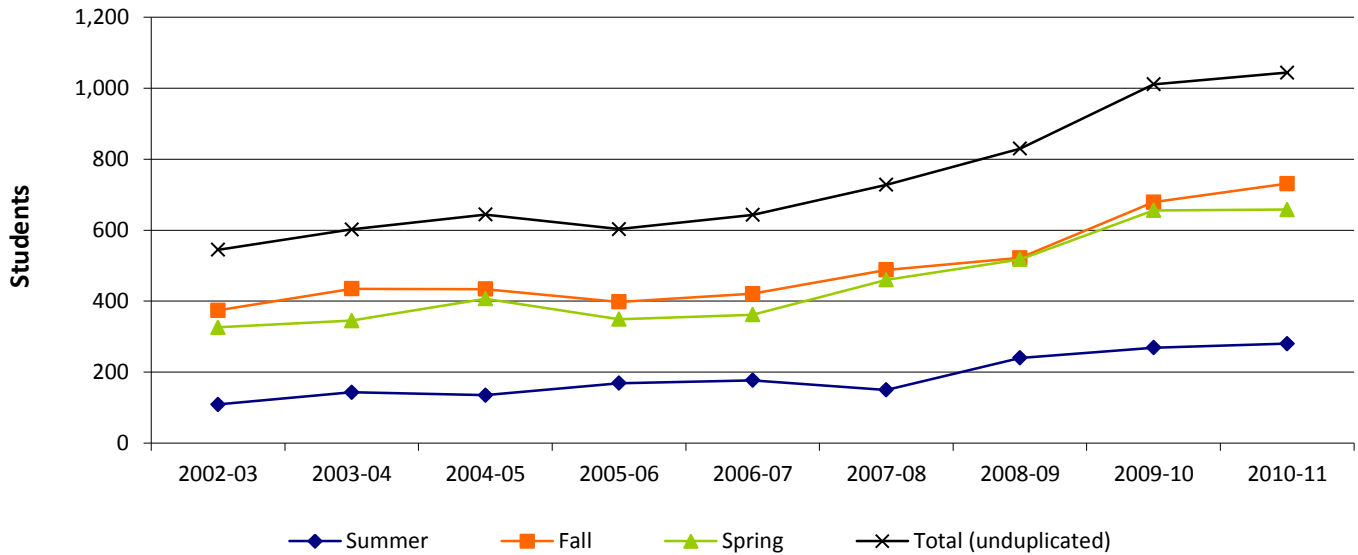
Notes: (1)Includes students enrolled in any credit bearing course located at the Rolla site (includes ITV)
 (2)Developmental coursework is for any ECC location

4.9 ECC Rolla Enrollment Summary

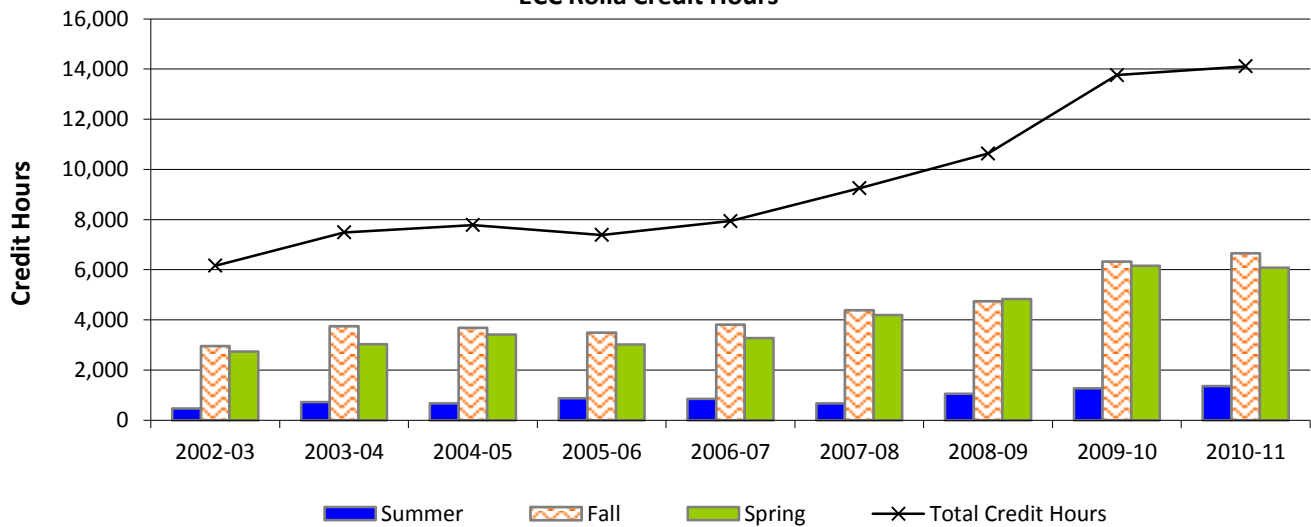
Top Zip Code Locations for ECC Rolla Students in Fall 2011



ECC Rolla Enrollment



ECC Rolla Credit Hours



ECC Sullivan

4.10 Fall 2011 ECC Sullivan Student Characteristics

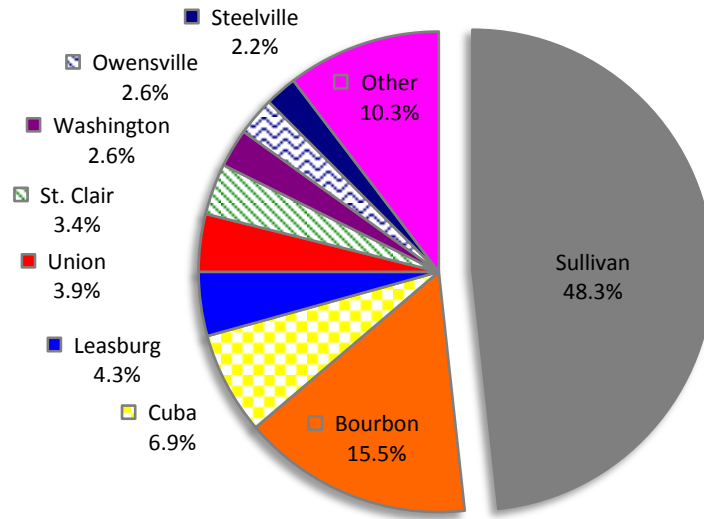
	Freshmen	Sophomore	Other	Total	% of Total
Total	102	85	45	232	100.0%
Gender					
Male	22	23	9	54	23.3%
Female	80	62	36	178	76.7%
Enrollment Status					
Full-Time	61	54	26	141	60.8%
Part-Time	41	31	19	91	39.2%
Developmental Courses					
1 Course	32	8	3	43	18.5%
2 Courses	22	3	0	25	10.8%
3+ Courses	18	2	0	20	8.6%
Location					
In-District	84	66	33	183	78.9%
Out-of-District	17	19	12	48	20.7%
Out-of-State	1	0	0	1	0.4%
International	0	0	0	0	0.0%
Other	0	0	0	0	0.0%
Age					
<18	2	0	0	2	0.9%
18-19	36	13	0	49	21.1%
20-21	16	25	14	55	23.7%
22-24	9	7	7	23	9.9%
25-29	10	12	11	33	14.2%
30-34	10	8	5	23	9.9%
35-39	5	6	2	13	5.6%
40-49	10	9	5	24	10.3%
50-64	3	5	1	9	3.9%
65 and older	1	0	0	1	0.4%
Unknown	0	0	0	0	0.0%
Race/Ethnicity					
American Indian or Alaska Native	0	0	1	1	0.4%
Asian	0	0	0	0	0.0%
Black or African American	0	0	0	0	0.0%
Hispanic	2	0	0	2	0.9%
Native Hawaiian or Other Pacific Islander	0	0	0	0	0.0%
White	100	84	44	228	98.3%
Two or More Races	0	0	0	0	0.0%
Nonresident Alien	0	0	0	0	0.0%
Race and Ethnicity Unknown	0	1	0	1	0.4%

Source: Colleague Census Data

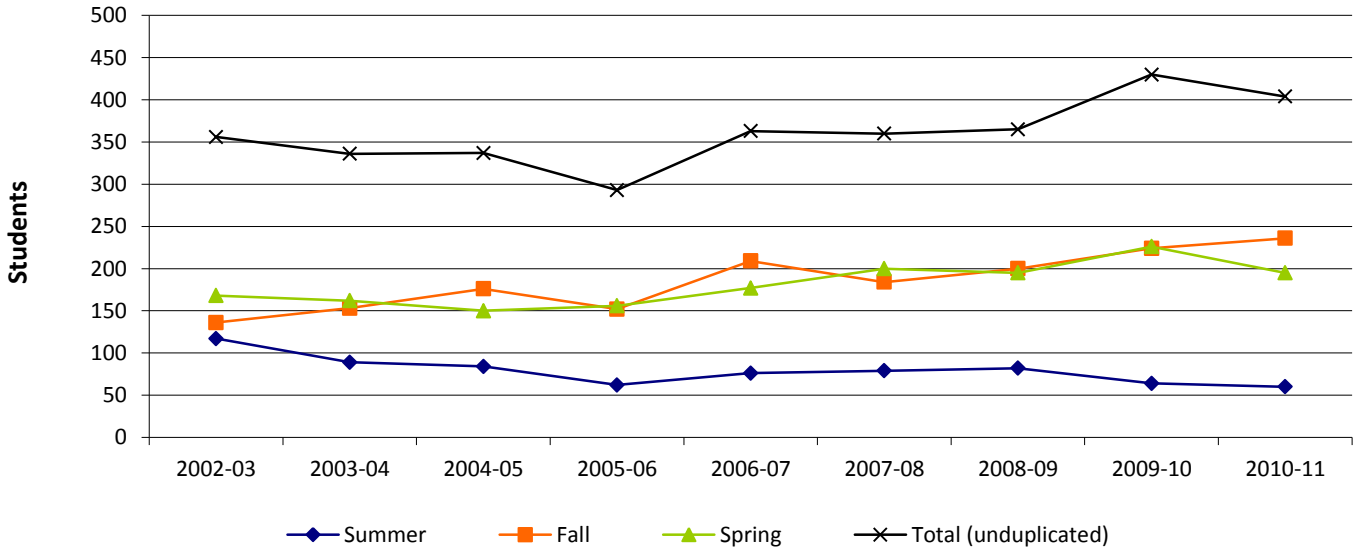
Notes: (1)Includes students enrolled in any credit bearing course located at the Sullivan site (includes ITV)
 (2)Developmental coursework is for any ECC location

4.12 ECC Sullivan Enrollment Summary

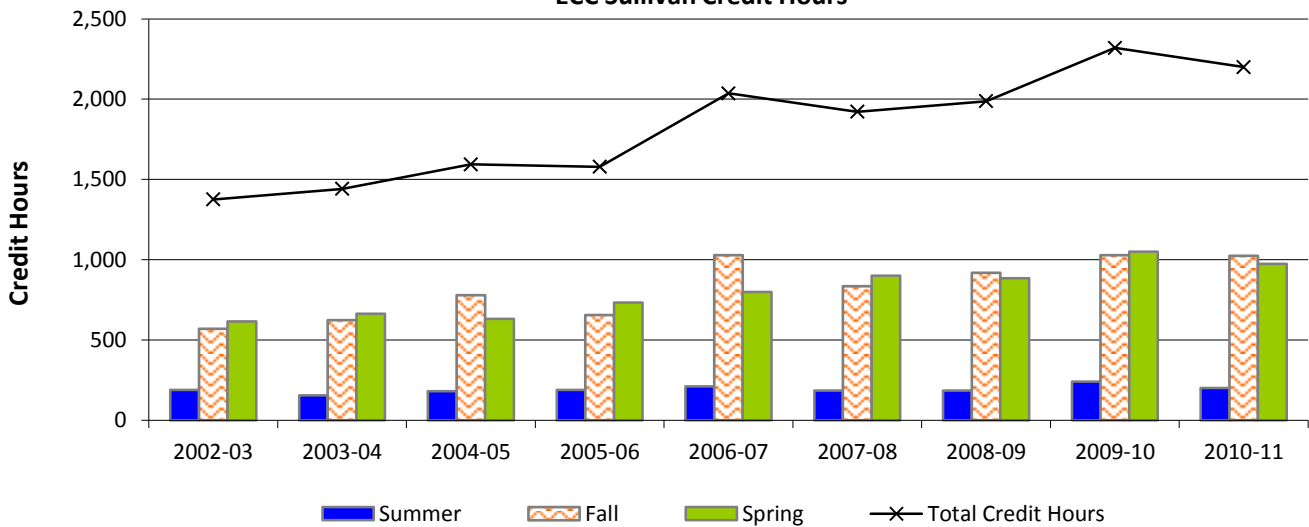
Top Zip Code Locations for ECC Sullivan Students in Fall 2011



ECC Sullivan Enrollment



ECC Sullivan Credit Hours



On-Line Students

4.13 Fall 2011 On-Line Student Characteristics

	Freshmen	Sophomore	Other	Total	% of Total
Total	161	291	115	567	100.0%
Gender					
Male	41	58	28	127	22.4%
Female	120	233	87	440	77.6%
Enrollment Status					
Full-Time	87	174	54	315	55.6%
Part-Time	74	117	61	252	44.4%
Developmental Courses					
1 Course	60	34	4	98	17.3%
2 Courses	22	5	0	27	4.8%
3+ Courses	8	4	0	12	2.1%
Location					
In-District	84	168	76	328	57.8%
Out-of-District	77	122	39	238	42.0%
Out-of-State	0	0	0	0	0.0%
International	0	1	0	1	0.2%
Other	0	0	0	0	0.0%
Age					
<18	0	1	0	1	0.2%
18-19	46	53	0	99	17.5%
20-21	23	60	30	113	19.9%
22-24	23	23	18	64	11.3%
25-29	19	51	19	89	15.7%
30-34	18	36	12	66	11.6%
35-39	8	25	11	44	7.8%
40-49	18	27	19	64	11.3%
50-64	5	14	6	25	4.4%
65 and older	1	1	0	2	0.4%
Unknown	0	0	0	0	0.0%
Race/Ethnicity					
American Indian or Alaska Native	0	0	2	2	0.4%
Asian	0	1	0	1	0.2%
Black or African American	1	3	0	4	0.7%
Hispanic	1	3	0	4	0.7%
Native Hawaiian or Other Pacific Islander	0	0	0	0	0.0%
White	157	276	112	545	96.1%
Two or More Races	0	0	0	0	0.0%
Nonresident Alien	0	1	0	1	0.2%
Race and Ethnicity Unknown	2	7	1	10	1.8%

Source: Colleague Census Data

Notes: (1)Includes students enrolled in any on-line credit bearing course
(2)Developmental coursework is for any ECC location

4.14 On-Line Student Headcount, Credit Hours & FTE by Academic Year

2010-2011	10/SU	10/FA	11/SP	2010-2011 Totals			
Headcount	435	582	579	Headcount*	1,596	Credit Hours	5,876.00
Credit Hours	1,555.00	2,212.00	2,109.00	Headcount**	1,247	Annual FTE	196
FTE	259	147	141				
2009-2010	09/SU	09/FA	10/SP	2009-2010 Totals			
Headcount	433	583	615	Headcount*	1,631	Credit Hours	5,952.00
Credit Hours	1,531.00	2,154.00	2,267.00	Headcount**	1,319	Annual FTE	198
FTE	255	144	151				
2008-2009	08/SU	08/FA	09/SP	2008-2009 Totals			
Headcount	276	496	509	Headcount*	1,281	Credit Hours	4,742.00
Credit Hours	958.00	1,907.00	1,877.00	Headcount**	1,037	Annual FTE	158
FTE	160	127	125				
2007-2008	07/SU	07/FA	08/SP	2007-2008 Totals			
Headcount	273	291	453	Headcount*	1,017	Credit Hours	3,662.00
Credit Hours	954.00	1,016.00	1,692.00	Headcount**	857	Annual FTE	122
FTE	159	68	113				
2006-2007	06/SU	06/FA	07/SP	2006-2007 Totals			
Headcount	257	410	448	Headcount*	1,115	Credit Hours	4,202.00
Credit Hours	886.00	1,612.00	1,704.00	Headcount**	906	Annual FTE	140
FTE	148	107	114				
2005-2006	05/SU	05/FA	06/SP	2005-2006 Totals			
Headcount	189	369	374	Headcount*	932	Credit Hours	3,555.00
Credit Hours	652.00	1,449.00	1,454.00	Headcount**	795	Annual FTE	119
FTE	109	97	97				
2004-2005	04/SU	04/FA	05/SP	2004-2005 Totals			
Headcount	154	284	268	Headcount*	706	Credit Hours	2,593.00
Credit Hours	511.00	1,074.00	1,008.00	Headcount**	607	Annual FTE	86
FTE	85	72	67				
2003-2004	03/SU	03/FA	04/SP	2003-2004 Totals			
Headcount	175	179	240	Headcount*	594	Credit Hours	2,080.00
Credit Hours	584.00	619.00	877.00	Headcount**	507	Annual FTE	69
FTE	97	41	58				
2002-2003	02/SU	02/FA	03/SP	2002-2003 Totals			
Headcount	133	151	193	Headcount*	477	Credit Hours	1,520.00
Credit Hours	394.00	487.00	639.00	Headcount**	421	Annual FTE	51
FTE	66	32	43				

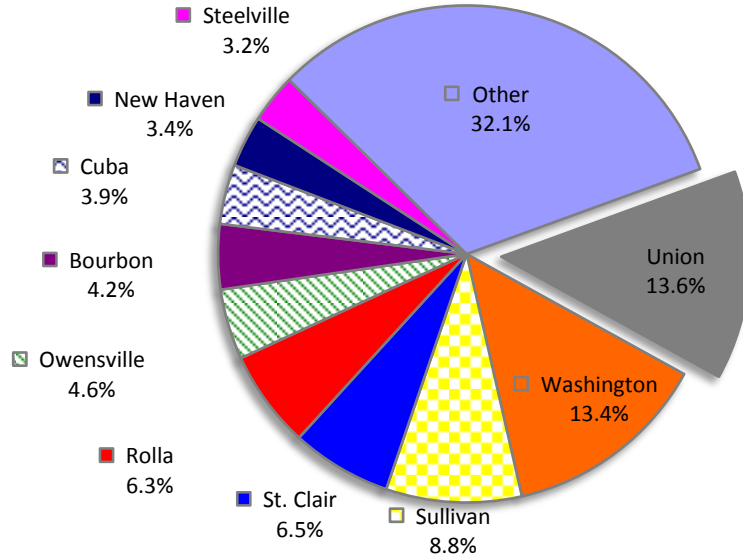
*duplicated
**unduplicated

Notes:

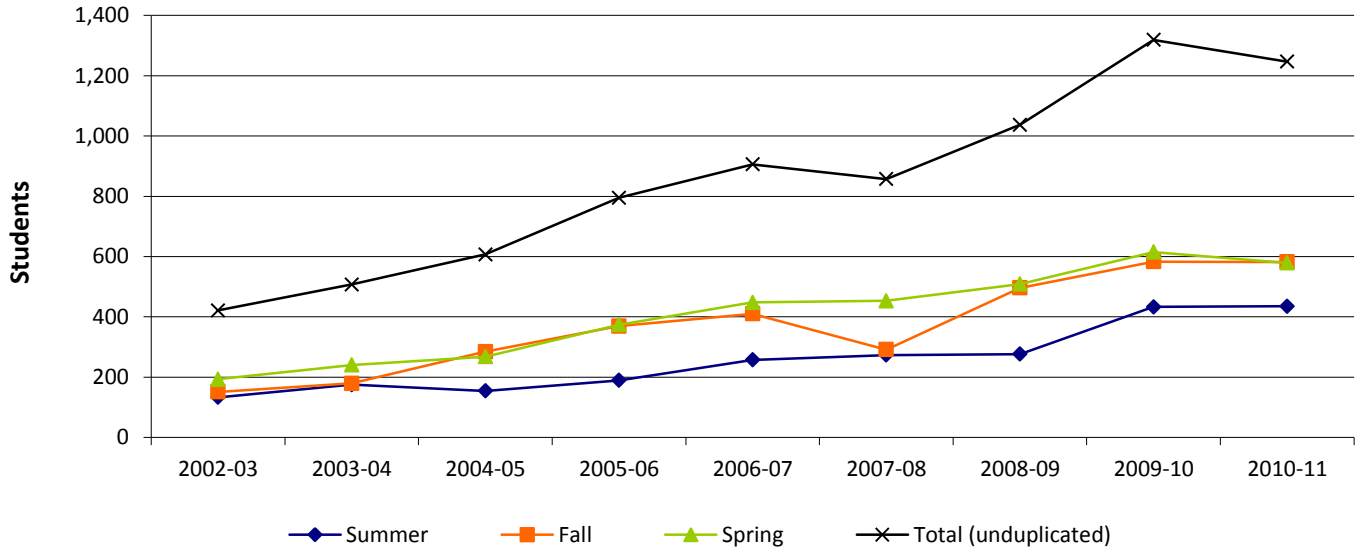
- (1) All data includes students who completed an on-line course with a verified grade.
- (2) FTE (Full-Time Equivalent):
 - Fall and Spring = total semester hours divided by 15
 - Summer = total semester hours divided by 6
 - Annual = total academic year hours divided by 30

4.15 On-Line Enrollment Summary

Top Zip Code Locations for On-Line Students in Fall 2011



On-Line Enrollment



On-Line Credit Hours

