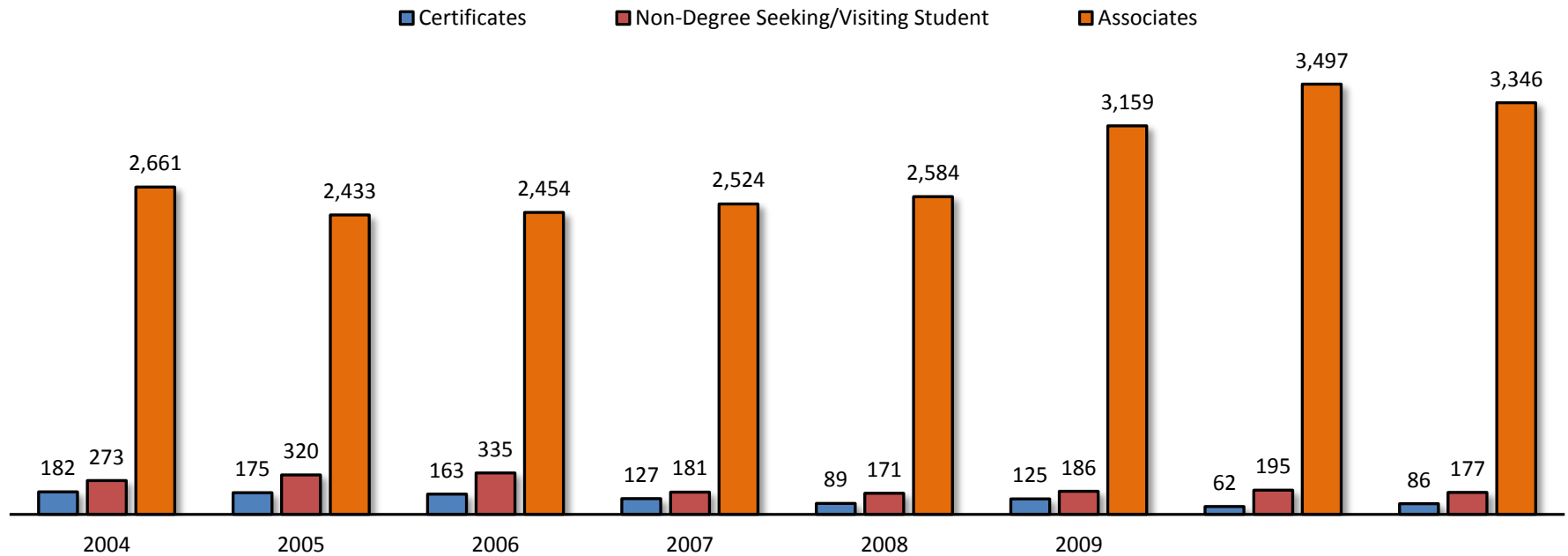

Section 5

Student Programs &
Course Enrollment

5.1 Fall Declared Degrees and Certificates

	2004	2005	2006	2007	2008	2009	2010	2011**	% Change	
									2004-2011	2010-2011
Total Declared Degrees*	3,116	2,928	2,952	2,832	2,844	3,470	3,754	3,609	15.8%	-3.9%
Degree Type										
Certificate of Specialization	143	130	121	90	68	90	45	4	-97.2%	-91.1%
Certificate of Achievement	39	45	42	37	21	35	17	82	110.3%	382.4%
Associate of Applied Science (AAS)	1,280	1,048	987	1,052	1,153	1,419	1,622	1,599	24.9%	-1.4%
Associate of Arts (AA)	1,329	1,324	1,388	1,069	1,057	1,430	1,380	1,352	1.7%	-2.0%
Associate of Arts in Teaching (AAT)	na	na	na	316	275	181	365	263	na	-27.9%
Associate of Fine Arts (AFA)	na	na	na	na	na	na	na	11	na	na
Associate of Science (AS)	52	61	79	87	99	129	130	121	132.7%	-6.9%
Non-Degree Seeking or Visiting Student	273	320	335	181	171	186	195	177	-35.2%	-9.2%



Source: Colleague

*Students may have more than one active declared degree (dual credit, dual technical credit, dual enrollment and unknown degree students not included).

**2011 was the first year for the new certificate model

5.2 Fall Course Enrollment by Academic Division

Career & Technical

											% Change		
Course											Total Course Enrollment		
Prefix	Description	2003	2004	2005	2006	2007	2008	2009	2010	2011		2003-2011	2010-2011
AI	HVAC/R	212	306	321	222	181	229	188	215	163	2,037	-23.1%	-24.2%
AT	Automotive Technology	41	49	36	37	20	41	49	72	59	404	43.9%	-18.1%
BC	Building Construction Technology	24	14	14	18	10	8	9	8	7	112	-70.8%	-12.5%
DF	Drafting & Design	87	113	58	86	98	148	115	113	97	915	11.5%	-14.2%
HM	Hospitality/Culinary Arts	145	205	183	185	159	173	219	147	224	1,640	54.5%	52.4%
IE	Industrial Engineering Technology	105	85	91	84	75	68	104	91	58	761	-44.8%	-36.3%
MA	Precision Machining	127	85	119	116	68	78	142	138	159	1,032	25.2%	15.2%
WL	Welding	14	15	28	29	16	24	49	49	62	286	342.9%	26.5%
Total Course Enrollment in Career & Technical		755	872	850	777	627	769	875	833	829	7,187	9.8%	-0.5%

Education & Social Sciences

											% Change		
Course											Total Course Enrollment		
Prefix	Description	2003	2004	2005	2006	2007	2008	2009	2010	2011		2003-2011	2010-2011
AC	Accounting	263	272	341	311	275	219	237	266	230	2,414	-12.5%	-13.5%
AN	Anthropology	6	10	10	--	--	--	27	22	19	94	216.7%	-13.6%
BMT	Business Management Technology	--	--	--	--	--	--	--	--	8	8	na	na
BT	Business Technology	262	282	281	322	229	227	255	291	170	2,319	-35.1%	-41.6%
BU	Business	329	295	336	433	361	345	345	323	257	3,024	-21.9%	-20.4%
CJ	Criminal Justice	20	31	68	48	55	53	169	165	103	712	415.0%	-37.6%
CS	Computer Information Systems	467	328	330	320	262	323	440	507	492	3,469	5.4%	-3.0%
EC	Economics	184	185	142	154	135	126	156	132	128	1,342	-30.4%	-3.0%
ED	Education	308	269	226	143	222	265	270	352	265	2,320	-14.0%	-24.7%
GE	Geography	40	42	46	32	26	20	57	48	25	336	-37.5%	-47.9%
HI	History	376	354	277	280	315	319	294	342	353	2,910	-6.1%	3.2%
HIT	Health Information Technology	--	--	--	--	--	--	--	14	63	77	na	350.0%
PE	Physical Education	618	546	456	525	595	571	642	702	625	5,280	1.1%	-11.0%
PS	Political Science	185	174	162	150	102	212	243	311	157	1,696	-15.1%	-49.5%
PY	Psychology	379	365	308	365	425	462	551	639	526	4,020	38.8%	-17.7%
SO	Sociology	246	211	215	271	274	307	386	428	304	2,642	23.6%	-29.0%
Total Course Enrollment in Education & Social Science		3,683	3,364	3,198	3,354	3,276	3,449	4,072	4,542	3,725	32,663	1.1%	-18.0%

5.2 Fall Course Enrollment by Academic Division (cont'd)

English, Foreign Language & Philosophy

											% Change		
Course		2003	2004	2005	2006	2007	2008	2009	2010	2011	Total Course Enrollment	2003-2011	2010-2011
Prefix	Description												
CV	Civilization	--	--	--	--	--	50	111	71	86	318	na	21.1%
EN	English	1,246	1,317	1,350	1,511	1,487	1,401	1,955	2,184	1,851	14,302	48.6%	-15.2%
FL	Foreign Language (all languages)	65	74	88	132	131	113	159	133	149	1,044	129.2%	12.0%
JR	Journalism	7	6	8	1	6	13	14	6	11	72	57.1%	83.3%
PR	Philosophy	109	86	89	135	116	156	154	193	181	1,219	66.1%	-6.2%
Total Course Enrollment in English, FL & Philosophy		1,427	1,483	1,535	1,779	1,740	1,733	2,393	2,587	2,278	16,955	59.6%	-11.9%

Fine & Performing Arts

											% Change		
Course		2003	2004	2005	2006	2007	2008	2009	2010	2011	Total Course Enrollment	2003-2011	2010-2011
Prefix	Description												
AR	Art	325	310	282	286	345	257	375	375	388	2,943	19.4%	3.5%
CT	Communication, Media & Theatre	515	434	469	487	496	463	652	670	692	4,878	34.4%	3.3%
GD	Graphic Design	159	164	149	162	172	185	177	192	170	1,530	6.9%	-11.5%
MU	Music	362	328	265	304	302	332	442	537	621	3,493	71.5%	15.6%
Total Course Enrollment in Fine & Performing Arts		1,361	1,236	1,165	1,239	1,315	1,237	1,646	1,774	1,871	12,844	37.5%	5.5%

Mathematics

											% Change		
Course		2003	2004	2005	2006	2007	2008	2009	2010	2011	Total Course Enrollment	2003-2011	2010-2011
Prefix	Description												
EG	Pre-Engineering	69	56	75	62	69	72	89	59	72	623	4.3%	22.0%
MT	Mathematics	950	1,101	1,040	1,102	1,178	1,221	1,508	1,910	1,851	11,861	94.8%	-3.1%
PH	Physics/Physical Science	125	130	138	115	82	54	98	58	69	869	-44.8%	19.0%
Total Course Enrollment in Mathematics		1,144	1,287	1,253	1,279	1,329	1,347	1,695	2,027	1,992	13,353	74.1%	-1.7%

Nursing & Allied Health

											% Change		
Course		2003	2004	2005	2006	2007	2008	2009	2010	2011	Total Course Enrollment	2003-2011	2010-2011
Prefix	Description												
EM	Emergency Medical Technology/Paramedic	111	148	94	125	112	163	263	339	300	1,655	170.3%	-11.5%
FT	Fire Technology	20	40	38	35	30	57	51	46	39	356	95.0%	-15.2%
NR	Nursing	199	190	225	196	158	187	227	226	227	1,835	14.1%	0.4%
OTA	Occupational Therapy Assistant	--	--	--	--	--	--	--	6	14	20	na	133.3%
RA	Radiologic Technology	--	--	--	--	--	--	32	84	120	236	na	42.9%
RC	Respiratory Care	71	61	64	81	96	126	133	117	114	863	60.6%	-2.6%
Total Course Enrollment in Nursing & Allied Health		401	439	421	437	396	533	706	818	814	4,965	103.0%	-0.5%

5.2 Fall Course Enrollment by Academic Division (cont'd)

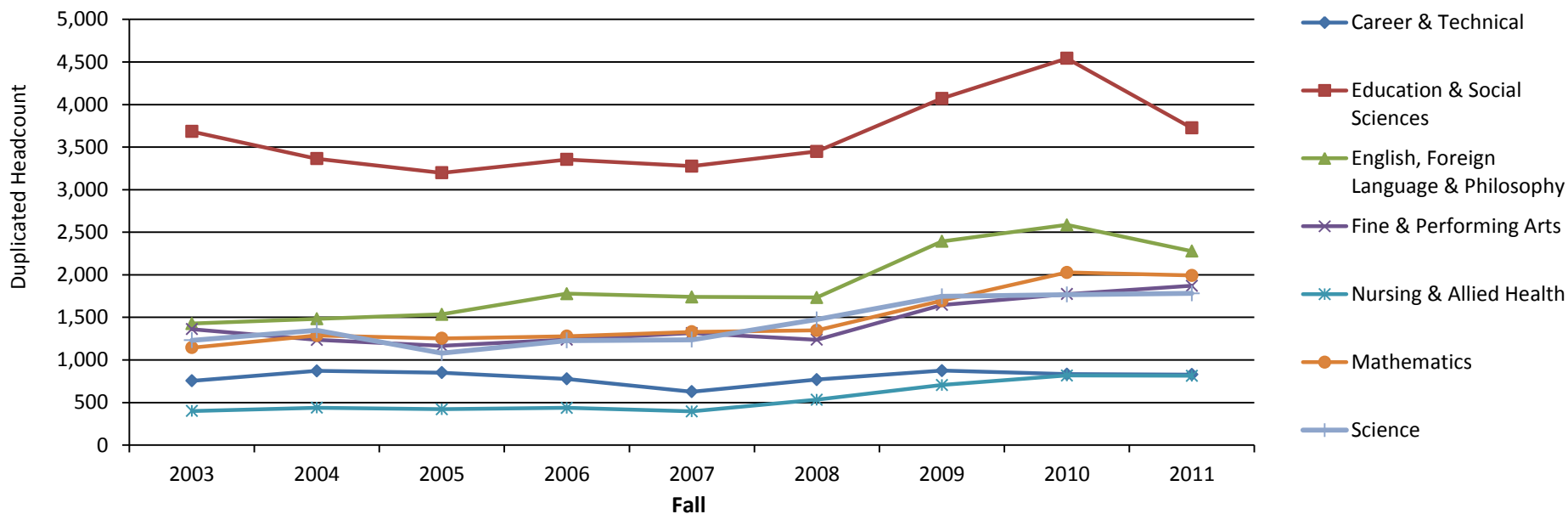
Science											% Change		
Course		2003	2004	2005	2006	2007	2008	2009	2010	2011	Total Course Enrollment	2003-2011	2010-2011
Prefix	Description												
BI	Biology	977	1,028	845	892	933	1,051	1,262	900	919	8,807	-5.9%	2.1%
BY	Biotechnology	--	--	--	--	--	--	14	7	--	21	na	na
CH	Chemistry	253	281	185	263	240	257	298	400	420	2,597	66.0%	5.0%
CHT	Chemical Technology	--	--	--	--	--	--	--	--	1	1	na	na
ES	Environmental Science	--	--	9	28	35	86	91	134	90	473	na	-32.8%
GL	Geology	--	39	41	44	29	81	81	46	59	420	na	28.3%
HS	Health Science	--	--	--	--	--	--	--	281	292	573	na	3.9%
Total Course Enrollment in Science		1,230	1,348	1,080	1,227	1,237	1,475	1,746	1,768	1,781	12,892	44.8%	0.7%

Student Success											% Change		
Course		2003	2004	2005	2006	2007	2008	2009	2010	2011	Total Course Enrollment	2003-2011	2010-2011
Prefix	Description												
FS	Freshmen Studies	718	754	692	710	741	741	955	1,000	972	7,283	35.4%	-2.8%

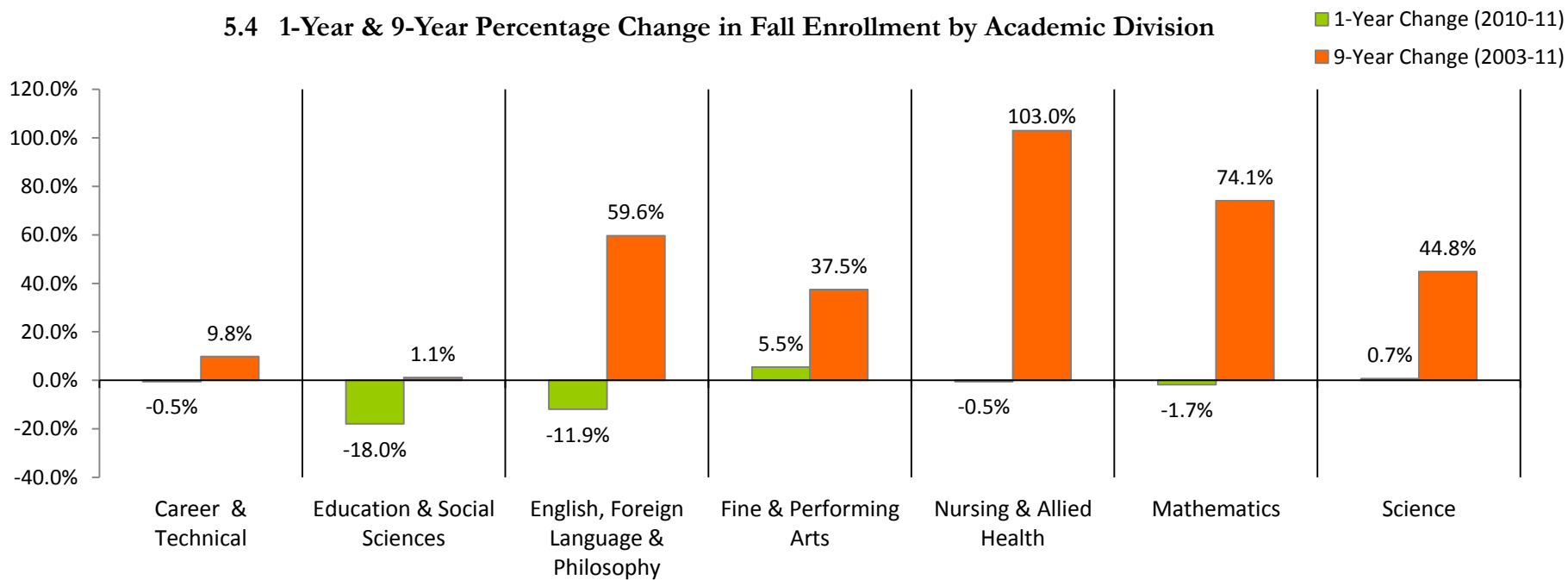
Source: Colleague Fall Census

Note: enrollment figures are duplicated student headcounts

5.3 Fall Enrollment Trend by Academic Division



5.4 1-Year & 9-Year Percentage Change in Fall Enrollment by Academic Division



5.5 Fall Dual Credit Course Enrollment

Dual Credit												% Change	
Course		2003	2004	2005	2006	2007	2008	2009	2010	2011	Total Course Enrollment	2003-2011	2010-2011
Prefix	Description												
BI	Biology	40	18	52	56	70	40	46	40	24	386	-40.0%	-40.0%
CT	Communication, Media & Theatre	32	30	66	67	82	92	79	99	95	642	196.9%	-4.0%
CV	Civilization	--	--	--	--	--	15	--	4	--	19	na	na
EN	English	73	46	70	65	47	76	62	45	49	533	-32.9%	8.9%
GL	Geology	--	--	--	12	20	18	20	14	26	110	na	85.7%
HI	History	127	133	91	106	116	110	138	117	122	1,060	-3.9%	4.3%
MT	Mathematics	113	104	132	152	151	165	160	57	57	1,091	-49.6%	0.0%
PE	Physical Education	--	--	--	3	--	--	7	--	--	10	na	na
PY	Psychology	36	22	39	56	30	28	16	18	39	284	8.3%	116.7%
SO	Sociology	35	37	29	48	83	46	57	41	13	389	-62.9%	-68.3%
Total Course Enrollment in Dual Credit		456	390	479	565	599	590	585	435	425	4,524	-6.8%	-2.3%

Dual Technical Credit												% Change	
Course		2003	2004	2005 ⁽¹⁾	2006	2007	2008	2009	2010	2011	Total Course Enrollment	2003-2011	2010-2011
Prefix	Description												
AC	Accounting	4	--	116	8	--	--	--	--	--	128	na	na
AI	HVAC/R	36	18	--	--	--	--	--	--	--	54	na	na
AR	Art	9	5	3	2	42	42	38	16	--	157	na	na
AT	Automotive Technology	13	72	86	65	143	139	102	138	138	896	961.5%	0.0%
BC	Building Construction Technology	36	93	82	82	96	40	31	29	23	512	-36.1%	-20.7%
BT	Business Technology	85	167	290	64	93	31	49	38	39	856	-54.1%	2.6%
BU	Business	--	45	23	7	8	14	17	10	10	134	na	0.0%
CS	Computer Information Systems	21	28	41	36	47	20	11	39	14	257	-33.3%	-64.1%
DF	Drafting & Design	33	45	69	72	76	78	9	12	16	410	-51.5%	33.3%
ED	Education	--	--	--	--	9	7	9	--	--	25	na	na
EM	Emergency Medical Technology/Paramedic	--	--	--	16	29	15	--	--	--	60	na	na
GD	Graphic Design	28	25	67	45	135	122	57	24	--	503	na	na
HM	Hospitality	--	7	--	--	--	--	--	6	--	13	na	na
IE	Industrial Engineering Technology	10	11	13	9	8	--	--	--	--	51	na	na
MA	Precision Machining	40	64	74	56	82	44	38	38	40	476	0.0%	5.3%
WL	Welding	6	41	33	59	80	31	64	40	39	393	550.0%	-2.5%
Total Course Enrollment in Dual Technical Credit		321	621	897	521	848	583	425	390	319	4,925	-0.6%	-18.2%

Source: Colleague Fall Census

Notes:

- (1) The increase for Dual Technical Credit enrollment in Fall 2005 was due to a temporary change in the enrollment process
- (2) Enrollment figures are duplicated student headcounts

5.6 1-Year & 9-Year Percentage Change in Dual Credit Enrollment

