
Section 10

Continuing Education

10.1 Fall Continuing Education Student Characteristics

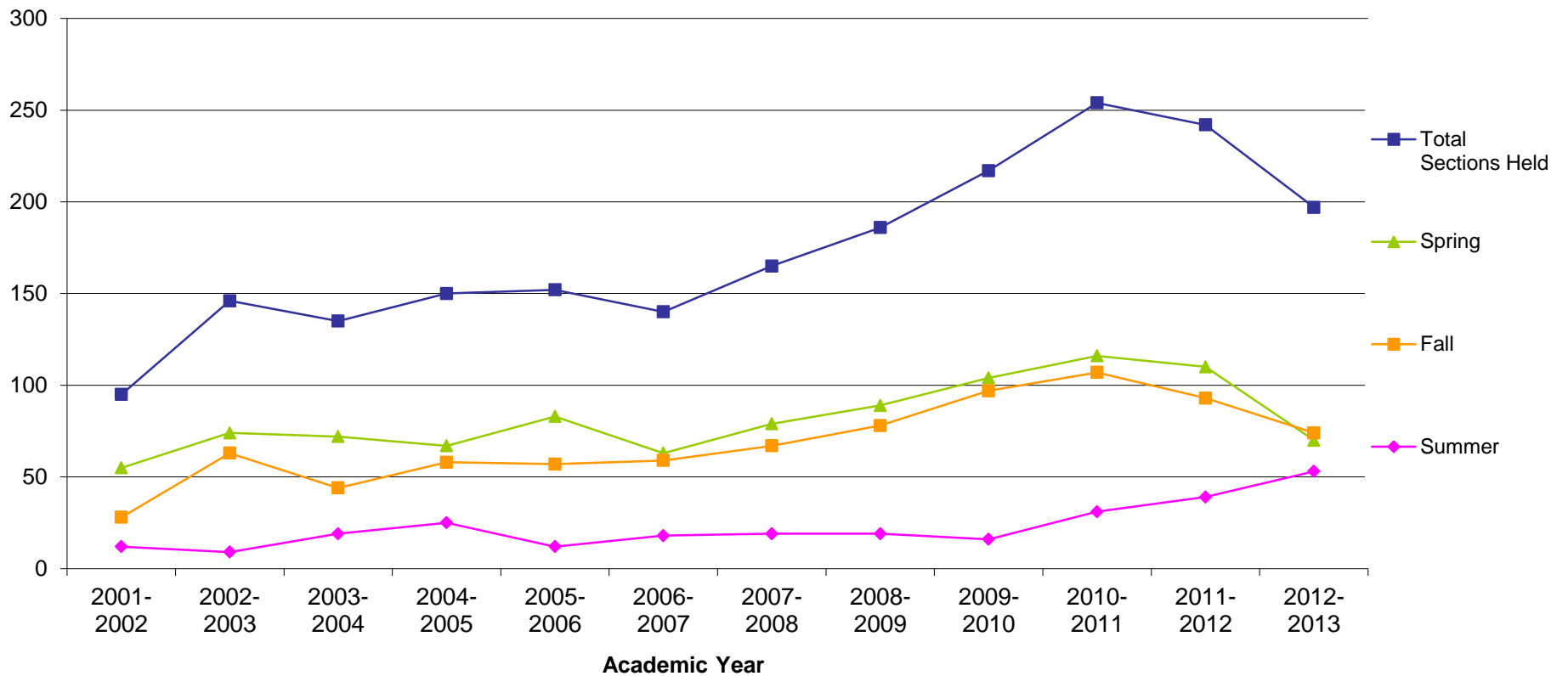
	Fall 2004	Fall 2005	Fall 2006	Fall 2007	Fall 2008	Fall 2009	Fall 2010	Fall 2011	Fall 2012
Total	261	372	282	352	271	494	550	488	402
Gender									
Male	95	131	104	109	95	120	169	122	100
Female	166	241	178	243	176	374	381	366	302
Enrollment Status (based on credit-bearing courses)									
Full-Time	9	8	10	6	2	25	22	17	6
Part-Time	9	8	11	5	7	11	20	11	14
Location									
In-District	181	297	204	263	215	400	449	383	328
Out-of-District	76	72	76	83	51	90	100	104	73
Out-of-State	0	2	0	0	0	0	0	0	0
International	0	0	0	0	0	0	0	0	0
Other	4	1	2	6	5	4	1	1	1
Age									
< 18	21	29	64	75	90	82	70	65	38
18-19	2	4	2	8	2	14	14	11	1
20-21	8	10	9	5	3	13	7	14	13
22-24	6	17	8	4	7	15	9	10	7
25-29	12	16	13	12	9	27	30	22	24
30-34	8	18	8	16	6	16	31	29	16
35-39	13	18	11	15	12	28	23	16	24
40-49	44	69	53	63	43	86	108	79	51
50-64	58	112	71	100	57	123	165	148	133
65 and older	46	74	34	47	35	74	71	73	89
Unknown	43	5	9	7	7	16	22	21	6
Race/Ethnicity									
American Indian/Alaska Native	0	0	2	0	0	1	1	0	0
Asian	0	0	0	1	0	0	0	0	0
Black or African American	0	1	1	0	1	1	2	3	1
Hispanic	0	0	0	1	1	2	1	1	1
Native Hawaiian/Pacific Islander	0	0	0	0	0	0	0	0	0
Nonresident Alien	0	0	0	0	0	0	0	0	0
Race/Ethnicity Unknown	100	149	117	175	159	253	277	259	128
Two or more races	0	0	0	0	0	0	0	0	0
White	161	222	162	175	110	237	269	225	272

Source: Colleague

Note: Data are based on end of fall term continuing education students.

10.2 Continuing Education Sections by Term

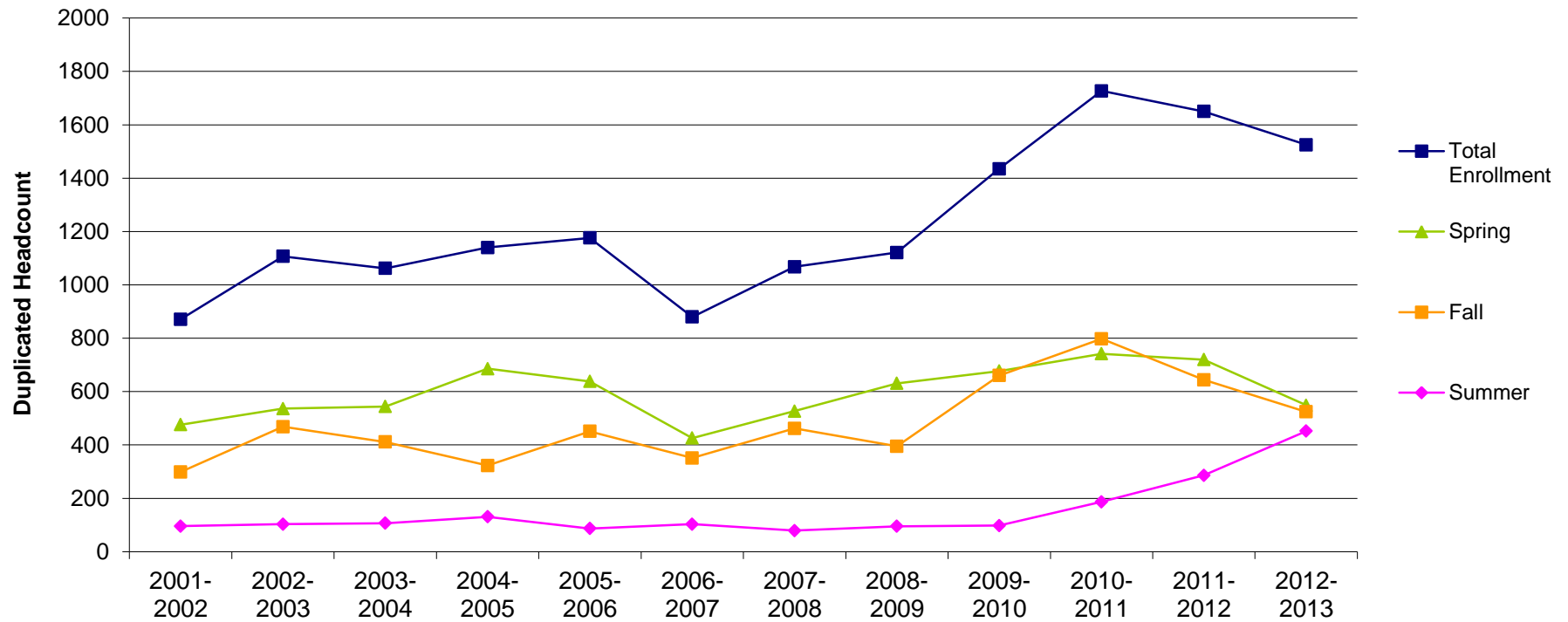
													% Change	
	2001-2002	2002-2003	2003-2004	2004-2005	2005-2006	2006-2007	2007-2008	2008-2009	2009-2010	2010-2011	2011-2012	2012-2013	2001-2002 to 2012-2013	2011-2012 to 2012-2013
Total Sections Held	95	146	135	150	152	140	165	186	217	254	242	197	107.4%	-18.6%
Summer	12	9	19	25	12	18	19	19	16	31	39	53	341.7%	35.9%
Fall	28	63	44	58	57	59	67	78	97	107	93	74	164.3%	-20.4%
Spring	55	74	72	67	83	63	79	89	104	116	110	70	27.3%	-36.4%



Source: Colleague (end of term data)

10.3 Continuing Education Enrollment

	2001-2002	2002-2003	2003-2004	2004-2005	2005-2006	2006-2007	2007-2008	2008-2009	2009-2010	2010-2011	2011-2012	2012-2013	% Change	
													2001-2002 to 2012-2013	2011-2012 to 2012-2013
Total Enrollment (duplicated)	871	1107	1062	1140	1176	880	1068	1121	1435	1727	1650	1525	75.1%	-7.6%
Summer	96	103	107	131	87	103	79	95	98	187	286	452	370.8%	58.0%
Fall	299	468	411	323	451	351	462	395	660	798	644	524	75.3%	-18.6%
Spring	476	536	544	686	638	426	527	631	677	742	720	549	15.3%	-23.8%
Total Students (unduplicated)	721	941	846	817	868	660	723	741	1022	1103	1172	1073	48.8%	-8.4%
Summer	79	102	100	120	85	98	76	91	87	157	250	366	363.3%	46.4%
Fall	271	404	378	261	372	282	352	271	494	550	488	404	49.1%	-17.2%
Spring	417	472	447	544	508	364	417	478	536	517	526	401	-3.8%	-23.8%



Source: Colleague (end of term data)