
Section 4

Enrollment By Campus

Main Campus

4.1 Fall 2012 Main Campus Student Characteristics

	Freshmen	Sophomore	Other	Total	% of Total
Total	1,387	884	248	2,519	100.0%
Gender					
Male	559	320	85	964	38.3%
Female	828	564	163	1,555	61.7%
Enrollment Status					
Full-Time	936	521	90	1,547	61.4%
Part-Time	451	363	158	972	38.6%
Developmental Courses					
1 Course	393	57	5	455	18.1%
2 Courses	177	13	3	193	7.7%
3+ Courses	141	4	0	145	5.8%
Location					
In-District	1,000	634	191	1,825	72.4%
Out-of-District	375	246	57	678	26.9%
Out-of-State	6	3	0	9	0.4%
International	6	1	0	7	0.3%
Other	0	0	0	0	0.0%
Age					
<18	26	1	0	27	1.1%
18-19	643	145	0	788	31.3%
20-21	206	279	37	522	20.7%
22-24	112	123	44	279	11.1%
25-29	120	98	43	261	10.4%
30-34	91	80	36	207	8.2%
35-39	56	52	22	130	5.2%
40-49	77	65	43	185	7.3%
50-64	52	35	23	110	4.4%
65 and older	4	6	0	10	0.4%
Unknown	0	0	0	0	0.0%
Race/Ethnicity					
American Indian or Alaska Native	2	4	1	7	0.3%
Asian	4	3	1	8	0.3%
Black or African American	6	4	3	13	0.5%
Hispanic	8	5	1	14	0.6%
Native Hawaiian or Other Pacific Islander	1	2	0	3	0.1%
White	1,341	855	238	2,434	96.6%
Two or More Races	1	1	0	2	0.1%
Nonresident Alien	0	0	0	0	0.0%
Race and Ethnicity Unknown	24	10	4	38	1.5%

Source: Colleague Census Data

Notes: (1) Includes students enrolled in any credit bearing course located on the Main Campus (includes Main Campus ITV)
 (2) Developmental coursework is for any ECC campus

4.2 Main Campus Headcount, Credit Hours & FTE by Academic Year

2011-2012	11/SU	11/FA	12/SP	2011-2012 Totals		
Headcount	949	2,698	2,515	Headcount*	6,162	Credit Hours 55,160.00
Credit Hours	4,128.00	26,679.50	24,352.50	Headcount**	3,593	Annual FTE 1,839
FTE	688	1,779	1,624			
2010-2011	10/SU	10/FA	11/SP	2010-2011 Totals		
Headcount	1,011	2,950	2,730	Headcount*	6,691	Credit Hours 60,724.00
Credit Hours	4,525.00	29,475.00	26,724.00	Headcount**	3,840	Annual FTE 2,024
FTE	754	1,965	1,782			
2009-2010	09/SU	09/FA	10/SP	2009-2010 Totals		
Headcount	873	2,641	2,671	Headcount*	6,185	Credit Hours 56,607.00
Credit Hours	3,746.50	26,133.50	26,727.00	Headcount**	3,661	Annual FTE 1,887
FTE	624	1,742	1,782			
2008-2009	08/SU	08/FA	09/SP	2008-2009 Totals		
Headcount	719	2,143	2,156	Headcount*	5,018	Credit Hours 44,451.00
Credit Hours	2,960.00	20,593.00	20,898.00	Headcount**	3,027	Annual FTE 1,482
FTE	493	1,373	1,393			
2007-2008	07/SU	07/FA	08/SP	2007-2008 Totals		
Headcount	690	2,076	1,985	Headcount*	4,751	Credit Hours 41,734.50
Credit Hours	2,807.00	20,147.50	18,780.00	Headcount**	2,877	Annual FTE 1,391
FTE	468	1,343	1,252			
2006-2007	06/SU	06/FA	07/SP	2006-2007 Totals		
Headcount	717	2,130	2,012	Headcount*	4,859	Credit Hours 42,453.00
Credit Hours	2,993.50	20,348.50	19,111.00	Headcount**	2,897	Annual FTE 1,415
FTE	499	1,357	1,274			
2005-2006	05/SU	05/FA	06/SP	2005-2006 Totals		
Headcount	773	2,036	1,899	Headcount*	4,708	Credit Hours 41,450.00
Credit Hours	3,230.50	19,937.00	18,282.50	Headcount**	2,825	Annual FTE 1,382
FTE	538	1,329	1,219			
2004-2005	04/SU	04/FA	05/SP	2004-2005 Totals		
Headcount	722	2,085	1,920	Headcount*	4,727	Credit Hours 42,990.00
Credit Hours	3,086.50	21,081.00	18,822.50	Headcount**	2,814	Annual FTE 1,433
FTE	514	1,405	1,255			
2003-2004	03/SU	03/FA	04/SP	2003-2004 Totals		
Headcount	780	2,094	1,943	Headcount*	4,817	Credit Hours 43,219.00
Credit Hours	3,216.50	20,868.00	19,134.50	Headcount**	2,893	Annual FTE 1,441
FTE	536	1,391	1,276			

*duplicated

**unduplicated

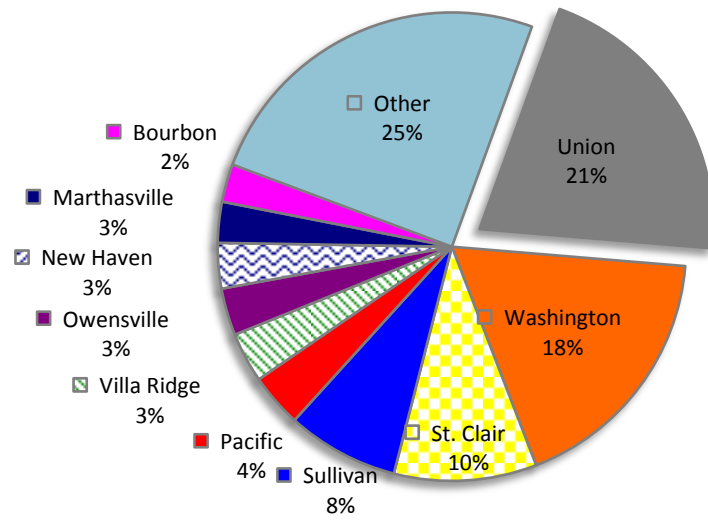
Notes:

(1) All data includes students who completed a course on the Main Campus (including ITV) with a verified grade.

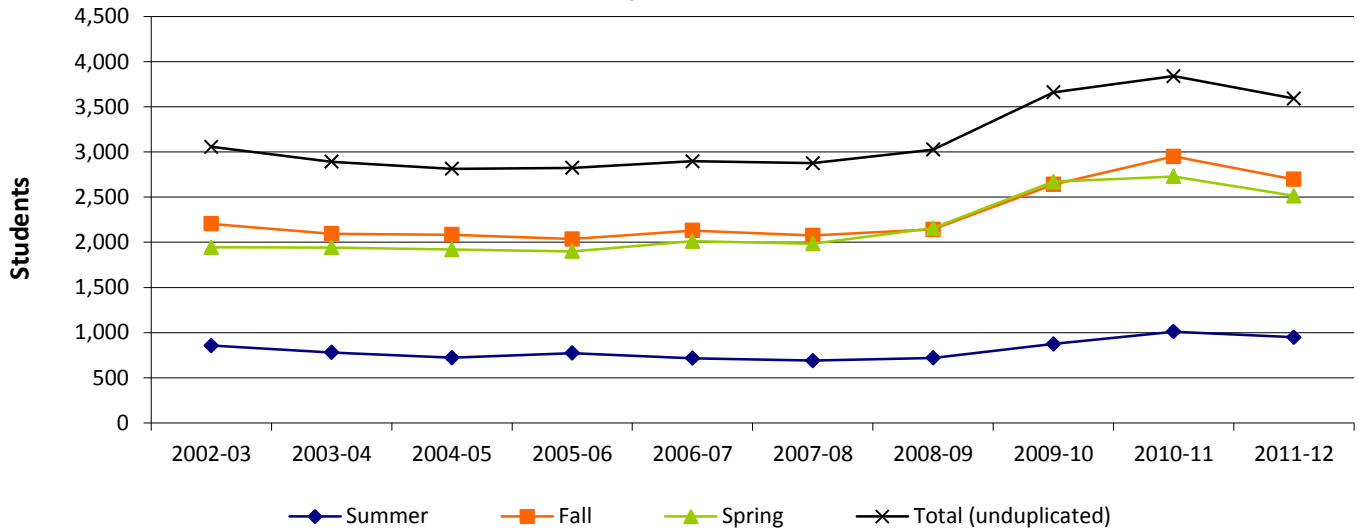
(2) FTE (Full-Time Equivalent):
 Fall and Spring = total semester hours divided by 15
 Summer = total semester hours divided by 6
 Annual = total academic year hours divided by 30

4.3 Main Campus Enrollment Summary

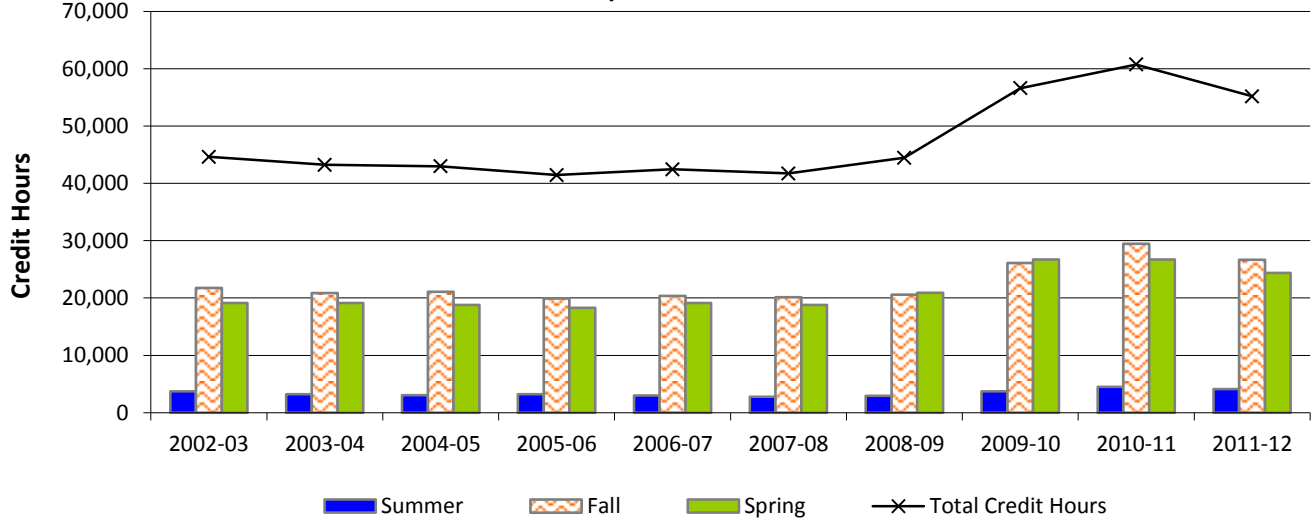
Top Zip Code Locations for Main Campus Students in Fall 2012



Main Campus Enrollment



Main Campus Credit Hours



ECC Washington

4.4 Fall 2012 ECC Washington Student Characteristics

	Freshmen	Sophomore	Other	Total	% of Total
Total	159	86	41	286	100.0%
Gender					
Male	98	40	22	160	55.9%
Female	61	46	19	126	44.1%
Enrollment Status					
Full-Time	74	45	18	137	47.9%
Part-Time	85	41	23	149	52.1%
Developmental Courses					
1 Course	35	6	1	42	14.7%
2 Courses	14	1	0	15	5.2%
3+ Courses	9	1	0	10	3.5%
Location					
In-District	129	66	33	228	79.7%
Out-of-District	30	20	8	58	20.3%
Out-of-State	0	0	0	0	0.0%
International	0	0	0	0	0.0%
Other	0	0	0	0	0.0%
Age					
<18	2	0	0	2	0.7%
18-19	36	19	0	55	19.2%
20-21	29	18	3	50	17.5%
22-24	23	14	9	46	16.1%
25-29	21	10	9	40	14.0%
30-34	11	4	3	18	6.3%
35-39	8	11	5	24	8.4%
40-49	14	4	7	25	8.7%
50-64	13	6	5	24	8.4%
65 and older	2	0	0	2	0.7%
Unknown	0	0	0	0	0.0%
Race/Ethnicity					
American Indian or Alaska Native	0	0	0	0	0.0%
Asian	1	0	0	1	0.3%
Black or African American	0	0	0	0	0.0%
Hispanic	0	1	0	1	0.3%
Native Hawaiian or Other Pacific Island	0	0	0	0	0.0%
White	157	84	41	282	98.6%
Two or More Races	0	0	0	0	0.0%
Nonresident Alien	0	0	0	0	0.0%
Race and Ethnicity Unknown	1	1	0	2	0.7%

Source: Colleague Census Data

Notes: (1)Includes students enrolled in any credit bearing course located at the Washington site (includes ITV)
(2)Developmental coursework is for any ECC location

4.5 ECC Washington Headcount, Credit Hours & FTE by Academic Year

2011-2012	11/SU	11/FA	12/SP	2011-2012 Totals		
Headcount	20	249	243	Headcount*	512	Credit Hours 2,662.00
Credit Hours	60.00	1,341.00	1,261.00	Headcount**	385	Annual FTE 89
FTE	10	89	84			
2010-2011	10/SU	10/FA	11/SP	2010-2011 Totals		
Headcount	18	252	243	Headcount*	513	Credit Hours 2,862.00
Credit Hours	90.00	1,426.00	1,346.00	Headcount**	383	Annual FTE 95
FTE	15	95	90			
2009-2010	09/SU	09/FA	10/SP	2009-2010 Totals		
Headcount	37	271	267	Headcount*	575	Credit Hours 3,035.00
Credit Hours	129.00	1,435.00	1,471.00	Headcount**	434	Annual FTE 101
FTE	22	96	98			
2008-2009	08/SU	08/FA	09/SP	2008-2009 Totals		
Headcount	19	223	170	Headcount*	412	Credit Hours 2,149.00
Credit Hours	57.00	1,135.00	957.00	Headcount**	315	Annual FTE 72
FTE	10	76	64			
2007-2008	07/SU	07/FA	08/SP	2007-2008 Totals		
Headcount	1	233	188	Headcount*	422	Credit Hours 1,861.00
Credit Hours	3.00	1,045.00	813.00	Headcount**	344	Annual FTE 62
FTE	1	70	54			
2006-2007	06/SU	06/FA	07/SP	2006-2007 Totals		
Headcount	23	260	206	Headcount*	489	Credit Hours 2,395.00
Credit Hours	69.00	1,316.00	1,010.00	Headcount**	384	Annual FTE 80
FTE	12	88	67			
2005-2006	05/SU	05/FA	06/SP	2005-2006 Totals		
Headcount	3	161	191	Headcount*	355	Credit Hours 1,906.00
Credit Hours	9.00	895.00	1,002.00	Headcount**	279	Annual FTE 64
FTE	2	60	67			
2004-2005	04/SU	04/FA	05/SP	2004-2005 Totals		
Headcount	9	180	201	Headcount*	390	Credit Hours 1,892.00
Credit Hours	27.00	871.00	994.00	Headcount**	295	Annual FTE 63
FTE	5	58	66			
2003-2004	03/SU	03/FA	04/SP	2003-2004 Totals		
Headcount	9	179	215	Headcount*	403	Credit Hours 1,989.00
Credit Hours	27.00	878.00	1,084.00	Headcount**	316	Annual FTE 66
FTE	5	59	72			

*duplicated
**unduplicated

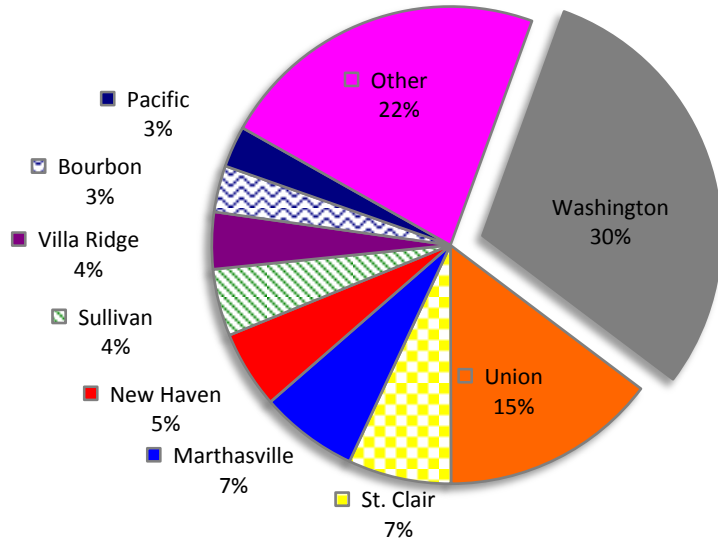
Notes:

(1) All data includes students who completed a course at the Washington site (including ITV) with a verified grade.

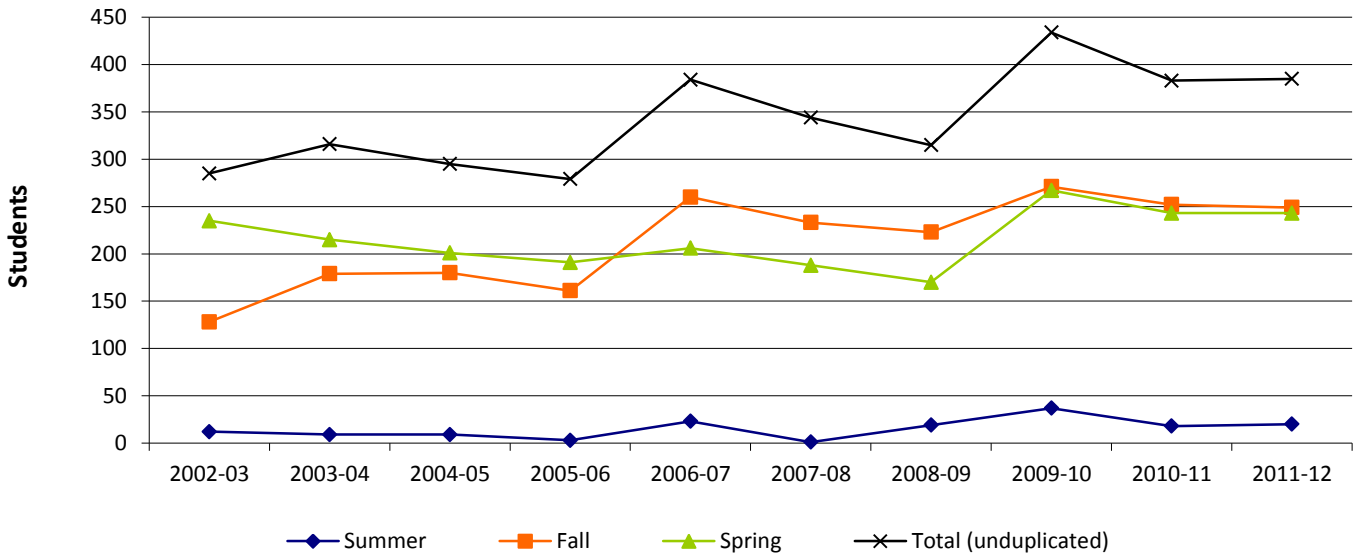
(2) FTE (Full-Time Equivalent):
 Fall and Spring = total semester hours divided by 15
 Summer = total semester hours divided by 6
 Annual = total academic year hours divided by 30

4.6 ECC Washington Enrollment Summary

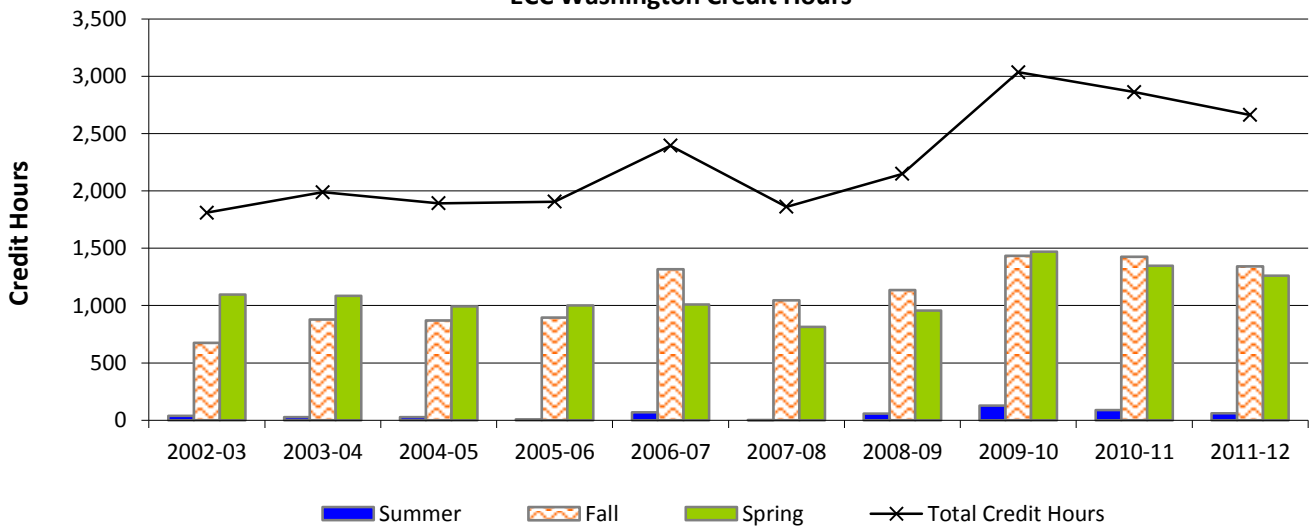
Top Zip Code Locations for ECC Washington Students in Fall 2012



ECC Washington Enrollment



ECC Washington Credit Hours



ECC Rolla

4.7 Fall 2012 ECC Rolla Student Characteristics

	Freshmen	Sophomore	Other	Total	% of Total
Total	426	198	49	673	100.0%
Gender					
Male	148	49	11	208	30.9%
Female	278	149	38	465	69.1%
Enrollment Status					
Full-Time	241	102	20	363	53.9%
Part-Time	185	96	29	310	46.1%
Developmental Courses					
1 Course	123	12	0	135	20.1%
2 Courses	51	4	1	56	8.3%
3+ Courses	45	0	0	45	6.7%
Location					
In-District	17	14	10	41	6.1%
Out-of-District	407	184	39	630	93.6%
Out-of-State	2	0	0	2	0.3%
International	0	0	0	0	0.0%
Other	0	0	0	0	0.0%
Age					
<18	5	0	0	5	0.7%
18-19	190	21	0	211	31.4%
20-21	72	53	5	130	19.3%
22-24	42	39	11	92	13.7%
25-29	40	27	11	78	11.6%
30-34	34	25	8	67	10.0%
35-39	15	10	1	26	3.9%
40-49	21	20	10	51	7.6%
50-64	5	3	3	11	1.6%
65 and older	1	0	0	1	0.1%
Unknown	1	0	0	1	0.1%
Race/Ethnicity					
American Indian or Alaska Native	2	1	0	3	0.4%
Asian	0	0	1	1	0.1%
Black or African American	8	2	0	10	1.5%
Hispanic	6	3	1	10	1.5%
Native Hawaiian or Other Pacific Islander	1	0	0	1	0.1%
White	400	187	47	634	94.2%
Two or More Races	1	0	0	1	0.1%
Nonresident Alien	0	0	0	0	0.0%
Race and Ethnicity Unknown	8	5	0	13	1.9%

Source: Colleague Census Data

Notes: (1)Includes students enrolled in any credit bearing course located at the Rolla site (includes ITV)
(2)Developmental coursework is for any ECC location

4.8 ECC Rolla Headcount, Credit Hours & FTE by Academic Year

2011-2012	11/SU	11/FA	12/SP	2011-2012 Totals		
Headcount	254	659	625	Headcount*	1,538	Credit Hours 13,440.00
Credit Hours	1,226.00	6,362.00	5,852.00	Headcount**	946	Annual FTE 448
FTE	204	424	390			
2010-2011	10/SU	10/FA	11/SP	2010-2011 Totals		
Headcount	280	731	658	Headcount*	1,669	Credit Hours 14,109.00
Credit Hours	1,368.00	6,658.50	6,082.50	Headcount**	1,044	Annual FTE 470
FTE	228	444	406			
2009-2010	09/SU	09/FA	10/SP	2009-2010 Totals		
Headcount	269	679	656	Headcount*	1,604	Credit Hours 13,757.50
Credit Hours	1,280.00	6,323.50	6,154.00	Headcount**	1,011	Annual FTE 459
FTE	213	422	410			
2008-2009	08/SU	08/FA	09/SP	2008-2009 Totals		
Headcount	240	522	518	Headcount*	1,280	Credit Hours 10,632.00
Credit Hours	1,058.00	4,747.00	4,827.00	Headcount**	830	Annual FTE 354
FTE	176	316	322			
2007-2008	07/SU	07/FA	08/SP	2007-2008 Totals		
Headcount	150	488	460	Headcount*	1,098	Credit Hours 9,247.00
Credit Hours	673.00	4,383.00	4,191.00	Headcount**	728	Annual FTE 308
FTE	112	292	279			
2006-2007	06/SU	06/FA	07/SP	2006-2007 Totals		
Headcount	177	421	362	Headcount*	960	Credit Hours 7,943.00
Credit Hours	857.00	3,810.00	3,276.00	Headcount**	643	Annual FTE 265
FTE	143	254	218			
2005-2006	05/SU	05/FA	06/SP	2005-2006 Totals		
Headcount	169	398	349	Headcount*	916	Credit Hours 7,384.00
Credit Hours	878.00	3,489.00	3,017.00	Headcount**	603	Annual FTE 246
FTE	146	233	201			
2004-2005	04/SU	04/FA	05/SP	2004-2005 Totals		
Headcount	135	434	407	Headcount*	976	Credit Hours 7,782.50
Credit Hours	674.00	3,690.00	3,418.50	Headcount**	644	Annual FTE 259
FTE	112	246	228			
2003-2004	03/SU	03/FA	04/SP	2003-2004 Totals		
Headcount	143	435	345	Headcount*	923	Credit Hours 7,491.00
Credit Hours	721.00	3,742.00	3,028.00	Headcount**	602	Annual FTE 250
FTE	120	249	202			

*duplicated

**unduplicated

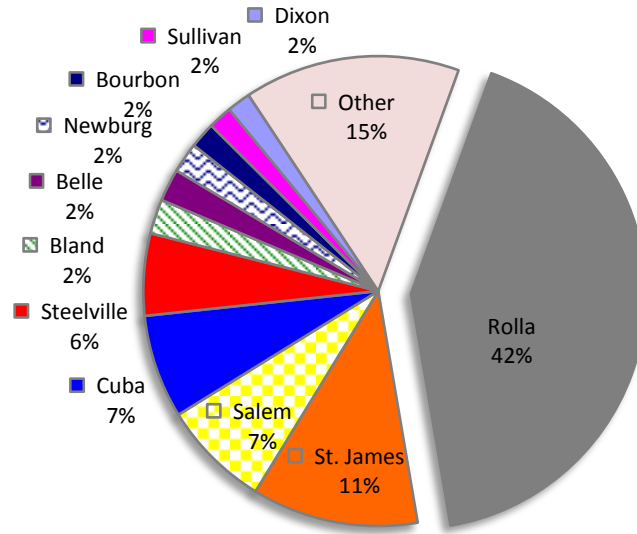
Notes:

(1) All data includes students who completed a course at the Rolla site (including ITV) with a verified grade.

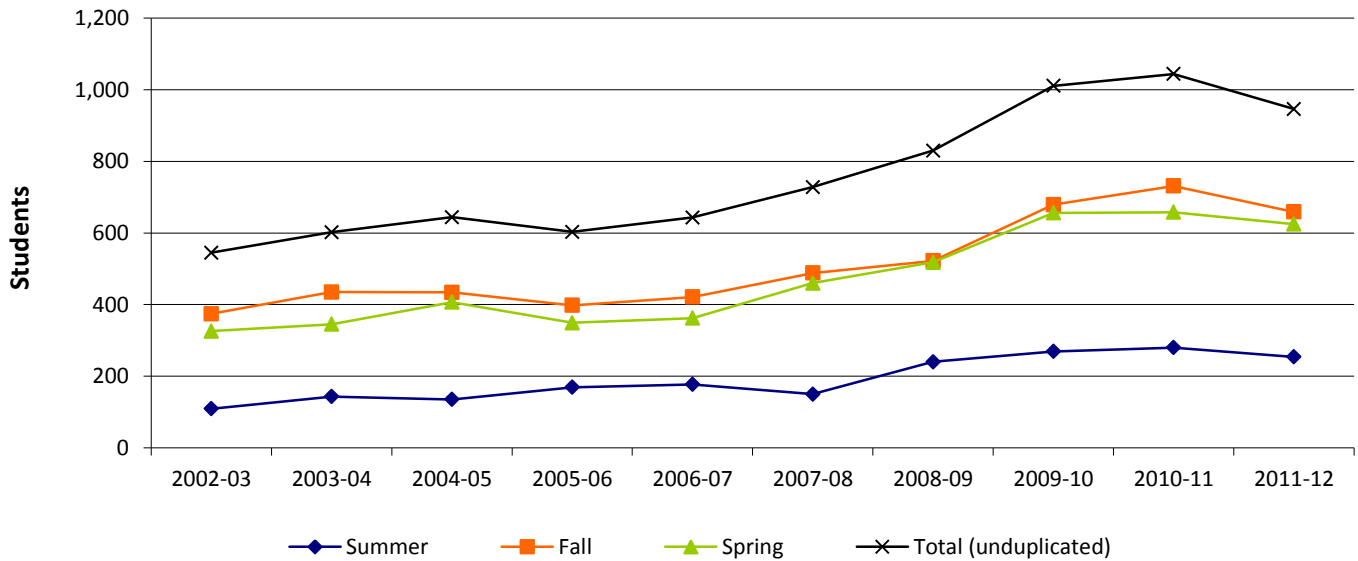
(2) FTE (Full-Time Equivalent):
 Fall and Spring = total semester hours divided by 15
 Summer = total semester hours divided by 6
 Annual = total academic year hours divided by 30

4.9 ECC Rolla Enrollment Summary

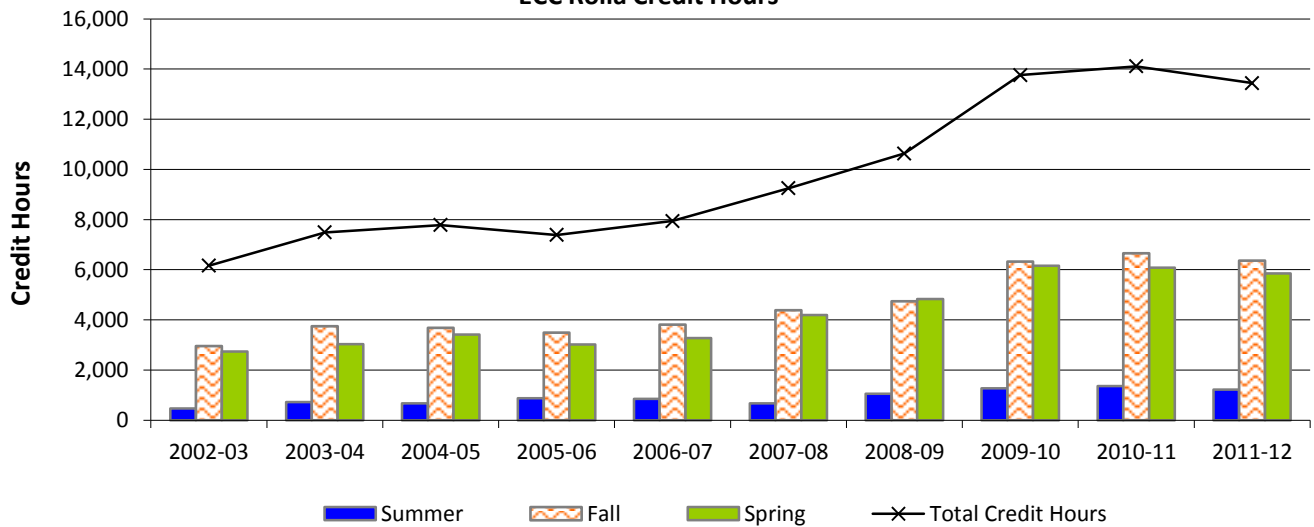
Top Zip Code Locations for ECC Rolla Students in Fall 2012



ECC Rolla Enrollment



ECC Rolla Credit Hours



ECC Sullivan

4.10 Fall 2012 ECC Sullivan Student Characteristics

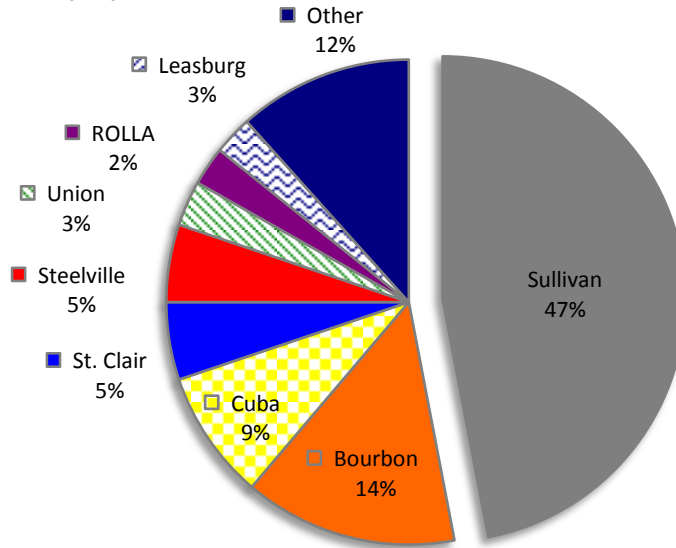
	Freshmen	Sophomore	Other	Total	% of Total
Total	146	63	23	232	100.0%
Gender					
Male	44	12	4	60	25.9%
Female	102	51	19	172	74.1%
Enrollment Status					
Full-Time	88	34	10	132	56.9%
Part-Time	58	29	13	100	43.1%
Developmental Courses					
1 Course	53	7	0	60	25.9%
2 Courses	29	3	1	33	14.2%
3+ Courses	18	1	0	19	8.2%
Location					
In-District	117	47	17	181	78.0%
Out-of-District	29	16	6	51	22.0%
Out-of-State	0	0	0	0	0.0%
International	0	0	0	0	0.0%
Other	0	0	0	0	0.0%
Age					
<18	3	0	0	3	1.3%
18-19	63	4	0	67	28.9%
20-21	22	19	4	45	19.4%
22-24	7	5	7	19	8.2%
25-29	16	7	2	25	10.8%
30-34	12	3	4	19	8.2%
35-39	9	14	2	25	10.8%
40-49	8	8	4	20	8.6%
50-64	5	3	0	8	3.4%
65 and older	1	0	0	1	0.4%
Unknown	0	0	0	0	0.0%
Race/Ethnicity					
American Indian or Alaska Native	0	0	0	0	0.0%
Asian	0	0	0	0	0.0%
Black or African American	0	0	0	0	0.0%
Hispanic	2	0	0	2	0.9%
Native Hawaiian or Other Pacific Islander	0	0	0	0	0.0%
White	142	61	23	226	97.4%
Two or More Races	1	1	0	2	0.9%
Nonresident Alien	0	0	0	0	0.0%
Race and Ethnicity Unknown	1	1	0	2	0.9%

Source: Colleague Census Data

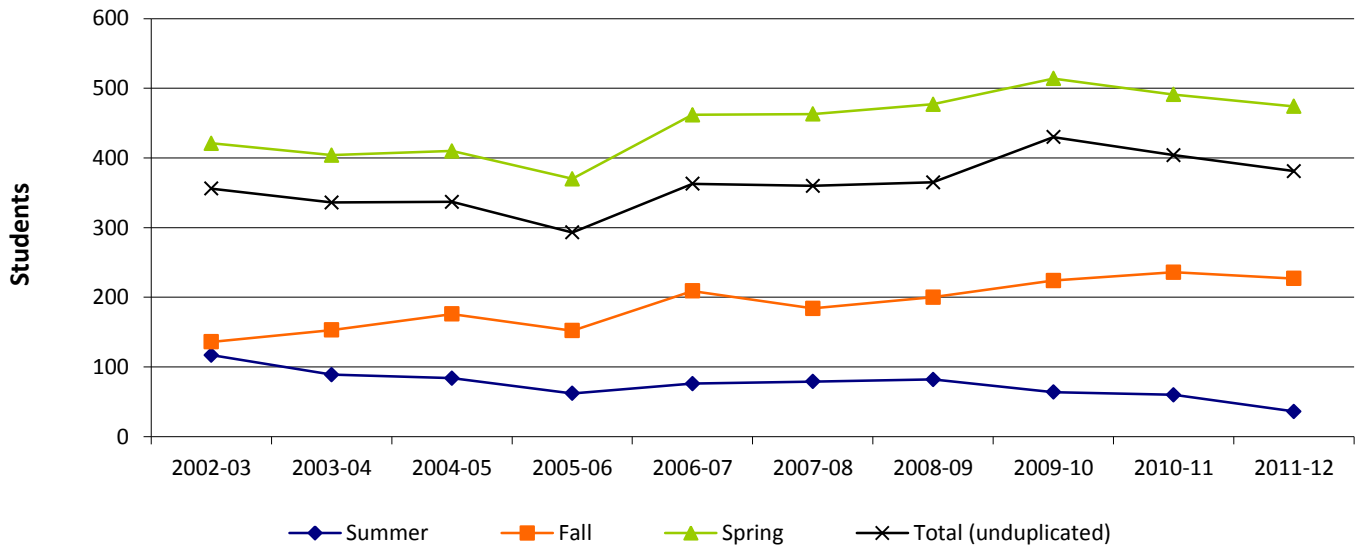
Notes: (1)Includes students enrolled in any credit bearing course located at the Sullivan site (includes ITV)
 (2)Developmental coursework is for any ECC location

4.12 ECC Sullivan Enrollment Summary

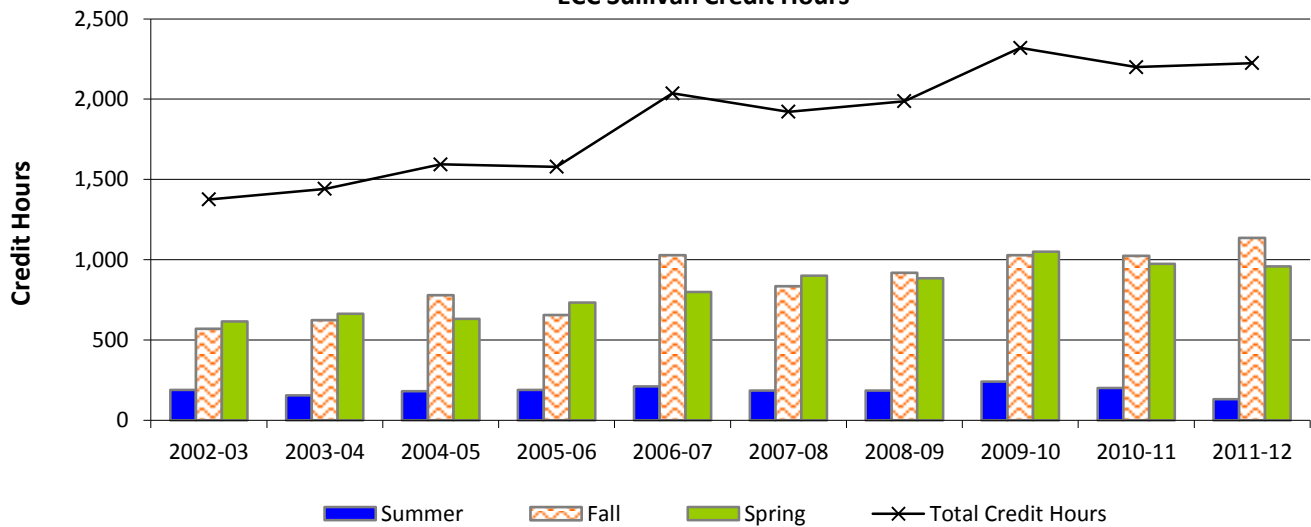
Top Zip Code Locations for ECC Sullivan Students in Fall 2012



ECC Sullivan Enrollment



ECC Sullivan Credit Hours



ECC Warrenton

4.13 Fall 2012 ECC Warrenton Student Characteristics

	Freshmen	Sophomore	Other	Total	% of Total
Total	24	3	0	27	100.0%
Gender					
Male	7	1	0	8	29.6%
Female	17	2	0	19	70.4%
Enrollment Status					
Full-Time	13	1	0	14	51.9%
Part-Time	11	2	0	13	48.1%
Developmental Courses					
1 Course	11	0	0	11	40.7%
2 Courses	3	0	0	3	11.1%
3+ Courses	3	0	0	3	11.1%
Location					
In-District	2	1	0	3	11.1%
Out-of-District	22	2	0	24	88.9%
Out-of-State	0	0	0	0	0.0%
International	0	0	0	0	0.0%
Other	0	0	0	0	0.0%
Age					
<18	1	0	0	1	3.7%
18-19	14	0	0	14	51.9%
20-21	2	2	0	4	14.8%
22-24	0	1	0	1	3.7%
25-29	2	0	0	2	7.4%
30-34	3	0	0	3	11.1%
35-39	2	0	0	2	7.4%
40-49	0	0	0	0	0.0%
50-64	0	0	0	0	0.0%
65 and older	0	0	0	0	0.0%
Unknown	0	0	0	0	0.0%
Race/Ethnicity					
American Indian or Alaska Native	0	0	0	0	0.0%
Asian	0	0	0	0	0.0%
Black or African American	0	0	0	0	0.0%
Hispanic	1	0	0	1	3.7%
Native Hawaiian or Other Pacific Islander	0	0	0	0	0.0%
White	23	3	0	26	96.3%
Two or More Races	0	0	0	0	0.0%
Nonresident Alien	0	0	0	0	0.0%
Race and Ethnicity Unknown	0	0	0	0	0.0%

Source: Colleague Census Data

Notes: (1)Includes students enrolled in any credit bearing course located at the Warrenton site (includes ITV)
 (2)Developmental coursework is for any ECC location

4.14 ECC Warrenton Student Headcount, Credit Hours & FTE by Academic Year

2011-2012	11/SU	11/FA	12/SP	2011-2012 Totals			
Headcount	0	0	25	Headcount*	25	Credit Hours	105.00
Credit Hours	0.00	0.00	105.00	Headcount**	25	Annual FTE	4
FTE	0	0	7				

2010-2011	10/SU	10/FA	11/SP	2010-2011 Totals			
Headcount	0	11	3	Headcount*	14	Credit Hours	51.00
Credit Hours	0.00	42.00	9.00	Headcount**	14	Annual FTE	2
FTE	0	3	1				

2009-2010	09/SU	09/FA	10/SP	2009-2010 Totals			
Headcount	0	7	12	Headcount*	19	Credit Hours	75.00
Credit Hours	0.00	30.00	45.00	Headcount**	16	Annual FTE	3
FTE	0	2	3				

2008-2009	08/SU	08/FA	09/SP	2008-2009 Totals			
Headcount	0	6	14	Headcount*	20	Credit Hours	60.00
Credit Hours	0.00	18.00	42.00	Headcount**	18	Annual FTE	2
FTE	0	1	3				

2007-2008	07/SU	07/FA	08/SP	2007-2008 Totals			
Headcount	0	25	32	Headcount*	57	Credit Hours	212.00
Credit Hours	0.00	96.00	116.00	Headcount**	50	Annual FTE	7
FTE	0	6	8				

2006-2007	06/SU	06/FA	07/SP	2006-2007 Totals			
Headcount	0	0	14	Headcount*	14	Credit Hours	57.00
Credit Hours	0.00	0.00	57.00	Headcount**	14	Annual FTE	2
FTE	0	0	4				

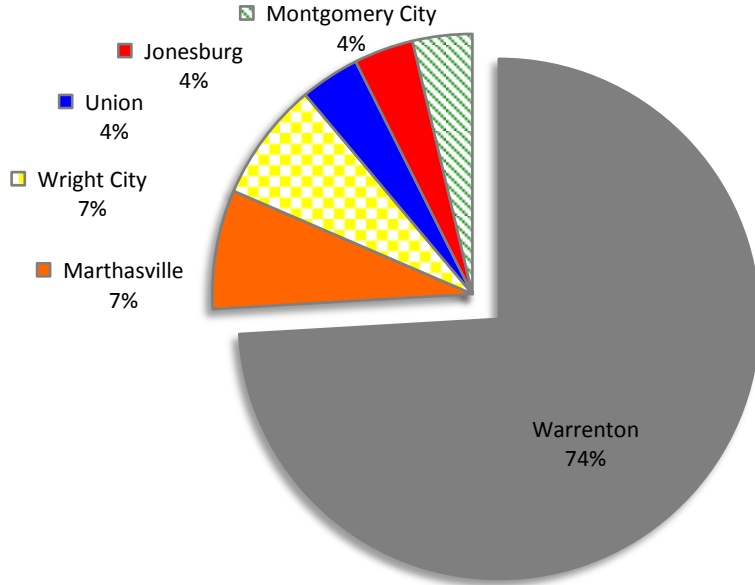
*duplicated
**unduplicated

Notes:

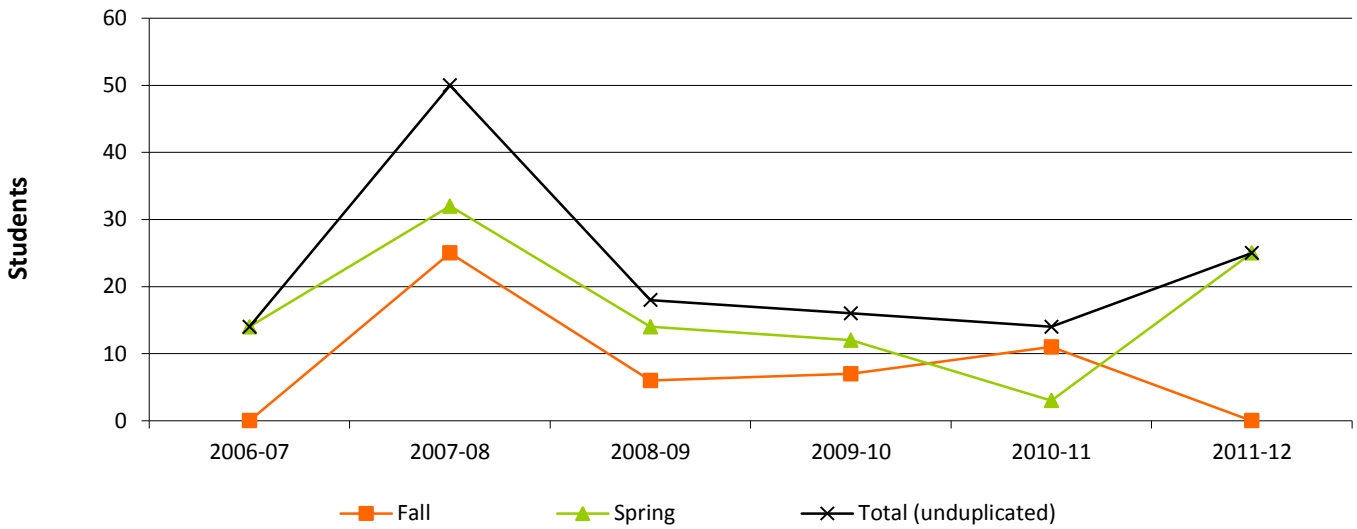
- (1) All data includes students who completed a course at the Warrenton site (including ITV) with a verified grade.
- (2) FTE (Full-Time Equivalent):
 - Fall and Spring = total semester hours divided by 15
 - Summer = total semester hours divided by 6
 - Annual = total academic year hours divided by 30

4.15 ECC Warrenton Enrollment Summary

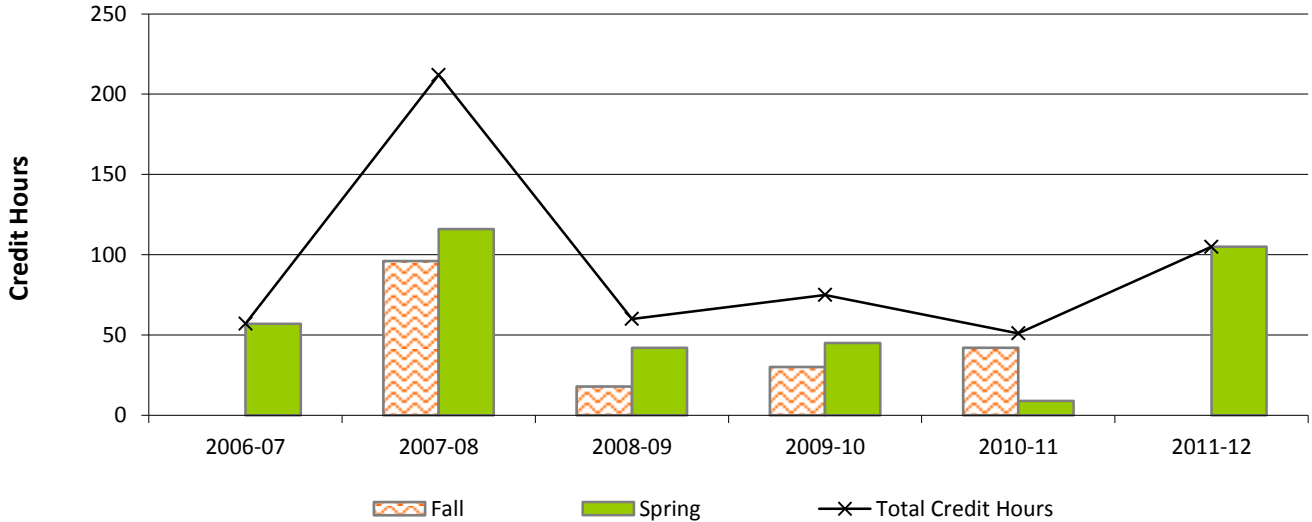
Top Zip Code Locations for ECC Warrenton Students in Fall 2012



ECC Warrenton Enrollment



ECC Warrenton Credit Hours



On-Line Students

4.13 Fall 2012 On-Line Student Characteristics

	Freshmen	Sophomore	Other	Total	% of Total
Total	275	333	90	698	100.0%
Gender					
Male	41	78	20	139	19.9%
Female	234	255	70	559	80.1%
Enrollment Status					
Full-Time	167	181	38	386	55.3%
Part-Time	108	152	52	312	44.7%
Developmental Courses					
1 Course	71	32	4	107	15.3%
2 Courses	25	4	1	30	4.3%
3+ Courses	13	1	0	14	2.0%
Location					
In-District	153	192	62	407	58.3%
Out-of-District	122	138	28	288	41.3%
Out-of-State	0	2	0	2	0.3%
International	0	1	0	1	0.1%
Other	0	0	0	0	0.0%
Age					
<18	3	0	0	3	0.4%
18-19	74	32	0	106	15.2%
20-21	37	78	9	124	17.8%
22-24	25	38	17	80	11.5%
25-29	29	53	17	99	14.2%
30-34	42	46	16	104	14.9%
35-39	29	25	8	62	8.9%
40-49	21	36	14	71	10.2%
50-64	15	23	9	47	6.7%
65 and older	0	2	0	2	0.3%
Unknown	0	0	0	0	0.0%
Race/Ethnicity					
American Indian or Alaska Native	0	1	0	1	0.1%
Asian	1	2	1	4	0.6%
Black or African American	2	1	1	4	0.6%
Hispanic	3	1	0	4	0.6%
Native Hawaiian or Other Pacific Islander	0	0	0	0	0.0%
White	267	323	88	678	97.1%
Two or More Races	0	1	0	1	0.1%
Nonresident Alien	0	0	0	0	0.0%
Race and Ethnicity Unknown	2	4	0	6	0.9%

Source: Colleague Census Data

Notes: (1)Includes students enrolled in any on-line credit bearing course
 (2)Developmental coursework is for any ECC location

4.14 On-Line Student Headcount, Credit Hours & FTE by Academic Year

2011-2012	11/SU	11/FA	12/SP	2011-2012 Totals			
Headcount	395	566	548	Headcount*	1,509	Credit Hours	5,404.00
Credit Hours	1,404.00	2,013.00	1,987.00	Headcount**	1,217	Annual FTE	180
FTE	234	134	132				
2010-2011	10/SU	10/FA	11/SP	2010-2011 Totals			
Headcount	435	582	579	Headcount*	1,596	Credit Hours	5,876.00
Credit Hours	1,555.00	2,212.00	2,109.00	Headcount**	1,247	Annual FTE	196
FTE	259	147	141				
2009-2010	09/SU	09/FA	10/SP	2009-2010 Totals			
Headcount	433	583	615	Headcount*	1,631	Credit Hours	5,952.00
Credit Hours	1,531.00	2,154.00	2,267.00	Headcount**	1,319	Annual FTE	198
FTE	255	144	151				
2008-2009	08/SU	08/FA	09/SP	2008-2009 Totals			
Headcount	276	496	509	Headcount*	1,281	Credit Hours	4,742.00
Credit Hours	958.00	1,907.00	1,877.00	Headcount**	1,037	Annual FTE	158
FTE	160	127	125				
2007-2008	07/SU	07/FA	08/SP	2007-2008 Totals			
Headcount	273	291	453	Headcount*	1,017	Credit Hours	3,662.00
Credit Hours	954.00	1,016.00	1,692.00	Headcount**	857	Annual FTE	122
FTE	159	68	113				
2006-2007	06/SU	06/FA	07/SP	2006-2007 Totals			
Headcount	257	410	448	Headcount*	1,115	Credit Hours	4,202.00
Credit Hours	886.00	1,612.00	1,704.00	Headcount**	906	Annual FTE	140
FTE	148	107	114				
2005-2006	05/SU	05/FA	06/SP	2005-2006 Totals			
Headcount	189	369	374	Headcount*	932	Credit Hours	3,555.00
Credit Hours	652.00	1,449.00	1,454.00	Headcount**	795	Annual FTE	119
FTE	109	97	97				
2004-2005	04/SU	04/FA	05/SP	2004-2005 Totals			
Headcount	154	284	268	Headcount*	706	Credit Hours	2,593.00
Credit Hours	511.00	1,074.00	1,008.00	Headcount**	607	Annual FTE	86
FTE	85	72	67				
2003-2004	03/SU	03/FA	04/SP	2003-2004 Totals			
Headcount	175	179	240	Headcount*	594	Credit Hours	2,080.00
Credit Hours	584.00	619.00	877.00	Headcount**	507	Annual FTE	69
FTE	97	41	58				

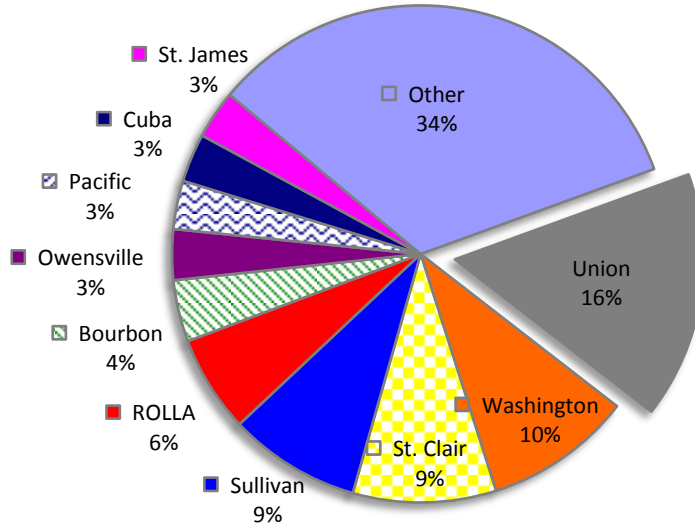
*duplicated
**unduplicated

Notes:

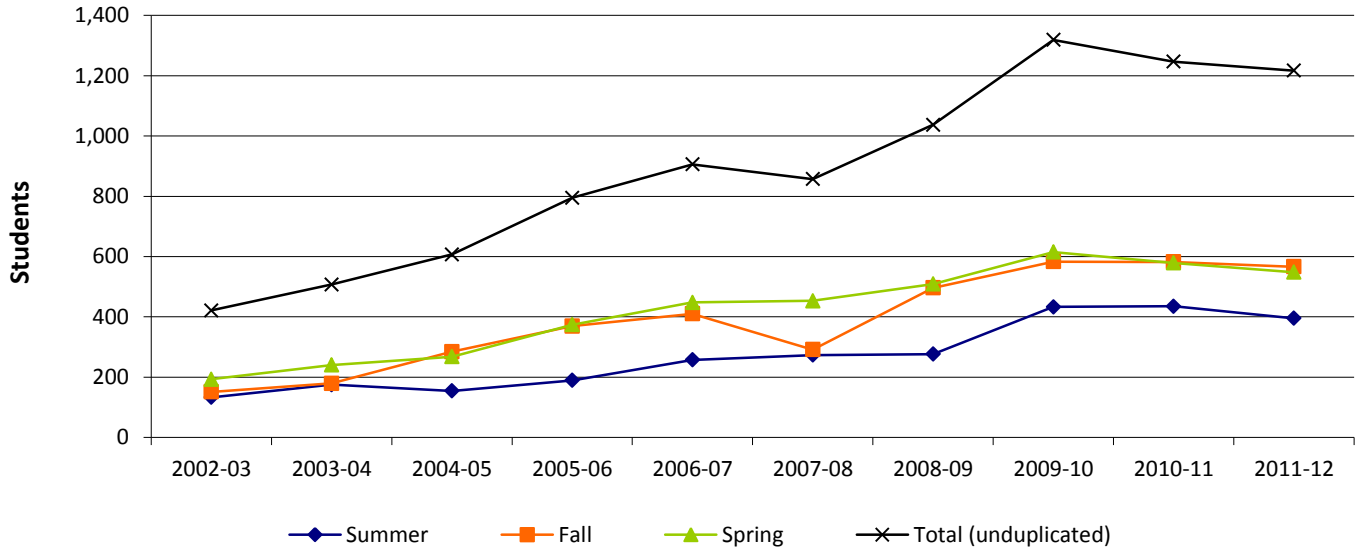
- (1) All data includes students who completed an on-line course with a verified grade.
- (2) FTE (Full-Time Equivalent):
 - Fall and Spring = total semester hours divided by 15
 - Summer = total semester hours divided by 6
 - Annual = total academic year hours divided by 30

4.15 On-Line Enrollment Summary

Top Zip Code Locations for On-Line Students in Fall 2012



On-Line Enrollment



On-Line Credit Hours

