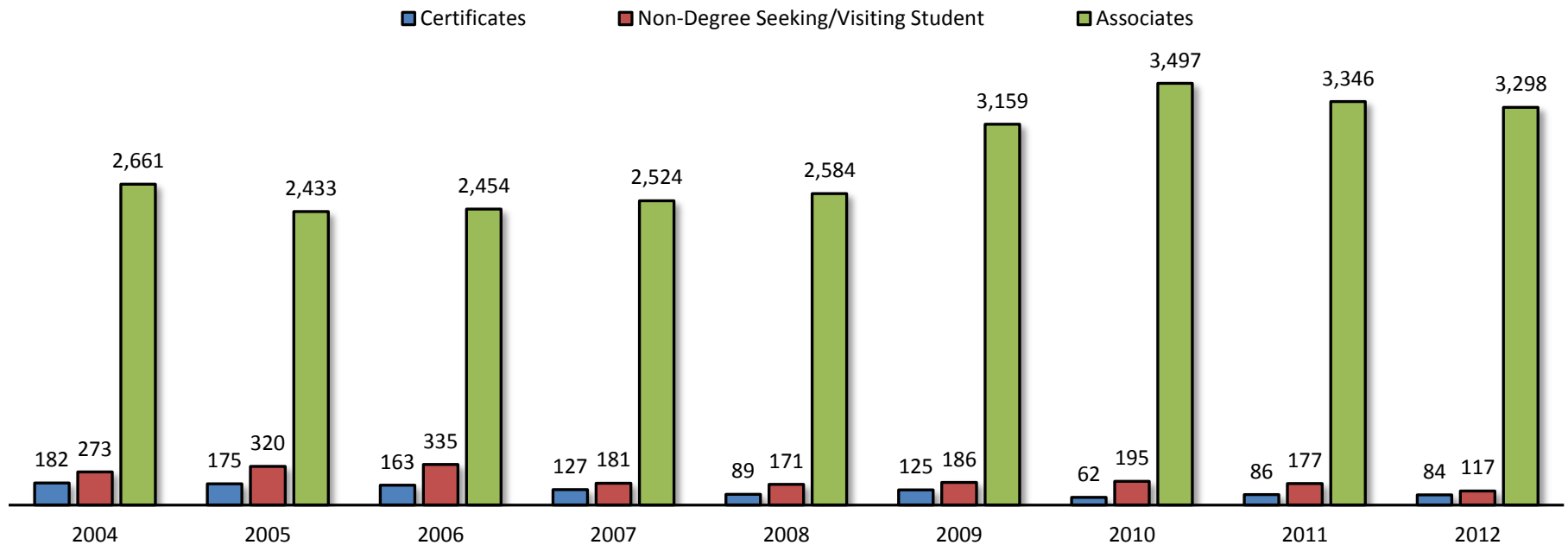

Section 5

Student Programs &
Course Enrollment

5.1 Fall Declared Degrees and Certificates

	2004	2005	2006	2007	2008	2009	2010	2011**	2012	% Change	
										2004-2012	2011-2012
Total Declared Degrees*	3,116	2,928	2,952	2,832	2,844	3,470	3,754	3,609	3,499	12.3%	-3.0%
Degree Type											
Certificate of Specialization	143	130	121	90	68	90	45	4	6	-95.8%	50.0%
Certificate of Achievement	39	45	42	37	21	35	17	82	78	100.0%	-4.9%
Associate of Applied Science (AAS)	1,280	1,048	987	1,052	1,153	1,419	1,622	1,599	1,513	18.2%	-5.4%
Associate of Arts (AA)	1,329	1,324	1,388	1,069	1,057	1,430	1,380	1,352	1,422	7.0%	5.2%
Associate of Arts in Teaching (AAT)	na	na	na	316	275	181	365	263	201	na	-23.6%
Associate of Fine Arts (AFA)	na	na	na	na	na	na	na	11	37	na	236.4%
Associate of Science (AS)	52	61	79	87	99	129	130	121	125	140.4%	3.3%
Non-Degree Seeking or Visiting Student	273	320	335	181	171	186	195	177	117	-57.1%	-33.9%



Source: Colleague

*Students may have more than one active declared degree (dual credit, dual technical credit, dual enrollment and unknown degree students not included).

**2011 was the first year for the new certificate model

5.2 Fall Course Enrollment by Academic Division

Career & Technical

												% Change		
Course												Total Course Enrollment		
Prefix	Description	2003	2004	2005	2006	2007	2008	2009	2010	2011	2012			
AI	HVAC/R	212	306	321	222	181	229	188	215	163	178	2,215	-16.0%	9.2%
AT	Automotive Technology	41	49	36	37	20	41	49	72	59	47	451	14.6%	-20.3%
BC	Building Construction Technology	24	14	14	18	10	8	9	8	7	8	120	-66.7%	14.3%
DF	Drafting & Design	87	113	58	86	98	148	115	113	97	1	916	-98.9%	-99.0%
HM	Hospitality/Culinary Arts	145	205	183	185	159	173	219	147	224	151	1,791	4.1%	-32.6%
IE	Industrial Engineering Technology	105	85	91	84	75	68	104	91	58	66	827	-37.1%	13.8%
MA	Precision Machining	127	85	119	116	68	78	142	138	159	181	1,213	42.5%	13.8%
WL	Welding	14	15	28	29	16	24	49	49	62	79	365	464.3%	27.4%
Total Course Enrollment in Career & Technical		755	872	850	777	627	769	875	833	829	711	7,898	-5.8%	-14.2%

Education & Social Sciences

												% Change		
Course												Total Course Enrollment		
Prefix	Description	2003	2004	2005	2006	2007	2008	2009	2010	2011	2012			
AC	Accounting	263	272	341	311	275	219	237	266	230	243	2,657	-7.6%	5.7%
AN	Anthropology	6	10	10	--	--	--	27	22	19	18	112	200.0%	-5.3%
BMT	Business Management Technology	--	--	--	--	--	--	--	--	8	30	38	na	275.0%
BT	Business Technology	262	282	281	322	229	227	255	291	170	92	2,411	-64.9%	-45.9%
BU	Business	329	295	336	433	361	345	345	323	257	252	3,276	-23.4%	-1.9%
CJ	Criminal Justice	20	31	68	48	55	53	169	165	103	68	780	240.0%	-34.0%
CS	Computer Information Systems	467	328	330	320	262	323	440	507	492	466	3,935	-0.2%	-5.3%
EC	Economics	184	185	142	154	135	126	156	132	128	126	1,468	-31.5%	-1.6%
ED	Education	308	269	226	143	222	265	270	352	265	238	2,558	-22.7%	-10.2%
GE	Geography	40	42	46	32	26	20	57	48	25	14	350	-65.0%	-44.0%
HI	History	376	354	277	280	315	319	294	342	353	333	3,243	-11.4%	-5.7%
HIM	Health Information Management	--	--	--	--	--	--	--	14	63	213	290	na	238.1%
PE	Physical Education	618	546	456	525	595	571	642	702	625	625	5,905	1.1%	0.0%
PS	Political Science	185	174	162	150	102	212	243	311	157	140	1,836	-24.3%	-10.8%
PY	Psychology	379	365	308	365	425	462	551	639	526	572	4,592	50.9%	8.7%
SO	Sociology	246	211	215	271	274	307	386	428	304	343	2,985	39.4%	12.8%
Total Course Enrollment in Education & Social Sciences		3,683	3,364	3,198	3,354	3,276	3,449	4,072	4,542	3,725	3,773	36,436	2.4%	1.3%

5.2 Fall Course Enrollment by Academic Division (cont'd)

English, Foreign Language & Philosophy

													% Change	
Course												Total Course Enrollment	2003-2012	2011-2012
Prefix	Description	2003	2004	2005	2006	2007	2008	2009	2010	2011	2012			
CV	Civilization	--	--	--	--	--	50	111	71	86	46	364	na	-46.5%
EN	English	1,246	1,317	1,350	1,511	1,487	1,401	1,955	2,184	1,851	1,715	16,017	37.6%	-7.3%
FL	Foreign Language (all languages)	65	74	88	132	131	113	159	133	149	103	1,147	58.5%	-30.9%
JR	Journalism	7	6	8	1	6	13	14	6	11	26	98	271.4%	136.4%
PR	Philosophy	109	86	89	135	116	156	154	193	181	204	1,423	87.2%	12.7%
Total Course Enrollment in English, FL & Philosophy		1,427	1,483	1,535	1,779	1,740	1,733	2,393	2,587	2,278	2,094	19,049	46.7%	-8.1%

Fine & Performing Arts

													% Change	
Course												Total Course Enrollment	2003-2012	2011-2012
Prefix	Description	2003	2004	2005	2006	2007	2008	2009	2010	2011	2012			
AR	Art	325	310	282	286	345	257	375	375	388	456	3,399	40.3%	17.5%
CT	Communication, Media & Theatre	515	434	469	487	496	463	652	670	692	669	5,547	29.9%	-3.3%
GD	Graphic Design	159	164	149	162	172	185	177	192	170	154	1,684	-3.1%	-9.4%
MU	Music	362	328	265	304	302	332	442	537	621	539	4,032	48.9%	-13.2%
Total Course Enrollment in Fine & Performing Arts		1,361	1,236	1,165	1,239	1,315	1,237	1,646	1,774	1,871	1,818	14,662	33.6%	-2.8%

Mathematics

													% Change	
Course												Total Course Enrollment	2003-2012	2011-2012
Prefix	Description	2003	2004	2005	2006	2007	2008	2009	2010	2011	2012			
EG	Pre-Engineering	69	56	75	62	69	72	89	59	72	78	701	13.0%	8.3%
MT	Mathematics	950	1,101	1,040	1,102	1,178	1,221	1,508	1,910	1,851	1,816	13,677	91.2%	-1.9%
PH	Physics/Physical Science	125	130	138	115	82	54	98	58	69	70	939	-44.0%	1.4%
Total Course Enrollment in Mathematics		1,144	1,287	1,253	1,279	1,329	1,347	1,695	2,027	1,992	1,964	15,317	71.7%	-1.4%

5.2 Fall Course Enrollment by Academic Division (cont'd)

Nursing & Allied Health

													% Change	
Course												Total Course Enrollment	2003-2012	2011-2012
Prefix	Description	2003	2004	2005	2006	2007	2008	2009	2010	2011	2012			
EM	Emergency Medical Technology/Paramedic	111	148	94	125	112	163	263	339	300	263	1,918	136.9%	-12.3%
FT	Fire Technology	20	40	38	35	30	57	51	46	39	60	416	200.0%	53.8%
NR	Nursing	199	190	225	196	158	187	227	226	227	240	2,075	20.6%	5.7%
OTA	Occupational Therapy Assistant	--	--	--	--	--	--	--	6	14	28	48	na	100.0%
RA	Radiologic Technology	--	--	--	--	--	--	32	84	120	143	379	na	19.2%
RC	Respiratory Care	71	61	64	81	96	126	133	117	114	136	999	91.5%	19.3%
Total Course Enrollment in Nursing & Allied Health		401	439	421	437	396	533	706	818	814	870	5,835	117.0%	6.9%

Science

													% Change	
Course												Total Course Enrollment	2003-2012	2011-2012
Prefix	Description	2003	2004	2005	2006	2007	2008	2009	2010	2011	2012			
BI	Biology	977	1,028	845	892	933	1,051	1,262	900	919	505	9,312	-48.3%	-45.0%
BY	Biotechnology	--	--	--	--	--	--	14	7	--	14	35	na	na
CH	Chemistry	253	281	185	263	240	257	298	400	420	210	2,807	-17.0%	-50.0%
CHT	Chemical Technology	--	--	--	--	--	--	--	--	1	3	4	na	200.0%
ES	Environmental Science	--	--	9	28	35	86	91	134	90	91	564	na	1.1%
GL	Geology	--	39	41	44	29	81	81	46	59	46	466	na	-22.0%
HS	Health Science	--	--	--	--	--	--	--	281	292	288	861	na	-1.4%
Total Course Enrollment in Science		1,230	1,348	1,080	1,227	1,237	1,475	1,746	1,768	1,781	1,157	14,049	-5.9%	-35.0%

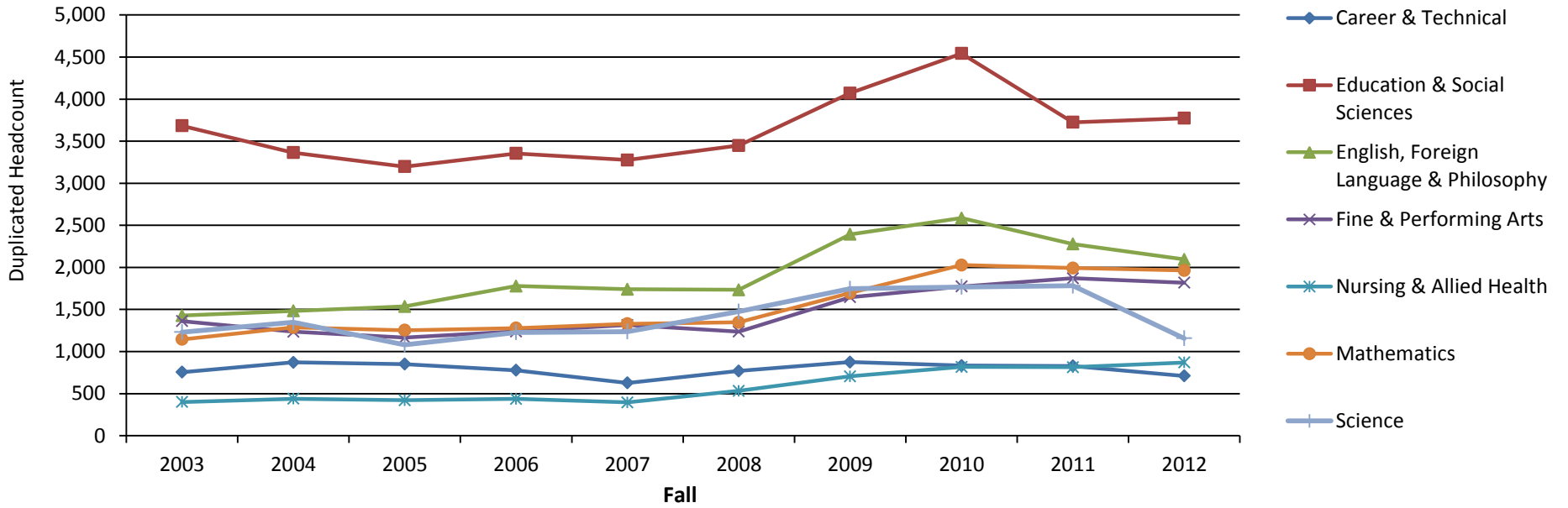
Student Success

													% Change	
Course												Total Course Enrollment	2003-2012	2011-2012
Prefix	Description	2003	2004	2005	2006	2007	2008	2009	2010	2011	2012			
FS	Freshmen Studies	718	754	692	710	741	741	955	1,000	972	906	8,189	26.2%	-6.8%

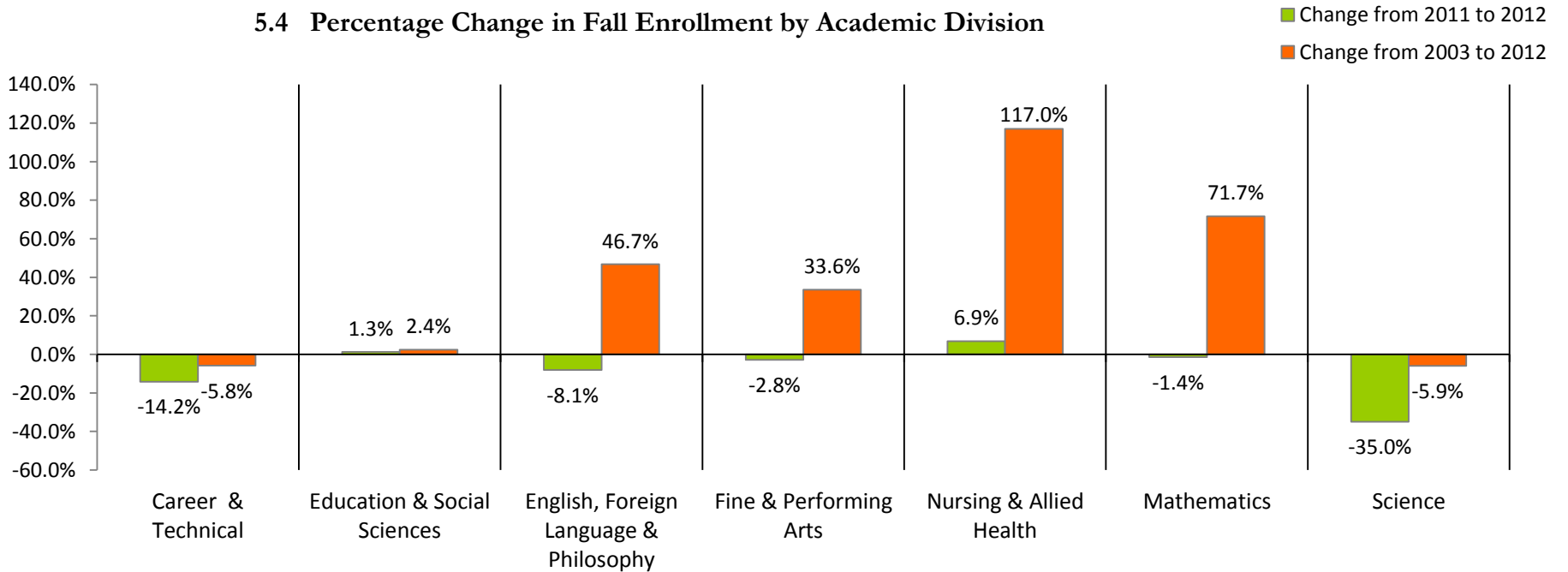
Source: Colleague Fall Census

Note: enrollment figures are duplicated student headcounts

5.3 Fall Enrollment Trend by Academic Division



5.4 Percentage Change in Fall Enrollment by Academic Division



5.5 Fall Dual Credit Course Enrollment

Dual Credit												% Change		
Course		2003	2004	2005	2006	2007	2008	2009	2010	2011	2012	Total Course Enrollment	2003-2012	2011-2012
Prefix	Description													
BI	Biology	40	18	52	56	70	40	46	40	24	9	395	-77.5%	-62.5%
CT	Communication, Media & Theatre	32	30	66	67	82	92	79	99	95	117	759	265.6%	23.2%
CV	Civilization	--	--	--	--	--	15	--	4	--	--	19	na	na
EN	English	73	46	70	65	47	76	62	45	49	37	570	-49.3%	-24.5%
GL	Geology	--	--	--	12	20	18	20	14	26	22	132	na	-15.4%
HI	History	127	133	91	106	116	110	138	117	122	150	1,210	18.1%	23.0%
MT	Mathematics	113	104	132	152	151	165	160	57	57	74	1,165	-34.5%	29.8%
PE	Physical Education	--	--	--	3	--	--	7	--	--	--	10	na	na
PY	Psychology	36	22	39	56	30	28	16	18	39	36	320	0.0%	-7.7%
SO	Sociology	35	37	29	48	83	46	57	41	13	38	427	8.6%	192.3%
Total Course Enrollment in Dual Credit		456	390	479	565	599	590	585	435	425	483	5,007	5.9%	13.6%

Dual Technical Credit												% Change		
Course		2003	2004	2005 ⁽¹⁾	2006	2007	2008	2009	2010	2011	2012	Total Course Enrollment	2003-2012	2011-2012
Prefix	Description													
AC	Accounting	4	--	116	8	--	--	--	--	--	--	128	na	na
AI	HVAC/R	36	18	--	--	--	--	--	--	--	--	54	na	na
AR	Art	9	5	3	2	42	42	38	16	--	--	157	na	na
AT	Automotive Technology	13	72	86	65	143	139	102	138	138	108	1,004	730.8%	-21.7%
BC	Building Construction Technology	36	93	82	82	96	40	31	29	23	25	537	-30.6%	8.7%
BT	Business Technology	85	167	290	64	93	31	49	38	39	23	879	-72.9%	-41.0%
BU	Business	--	45	23	7	8	14	17	10	10	7	141	na	-30.0%
CS	Computer Information Systems	21	28	41	36	47	20	11	39	14	17	274	-19.0%	21.4%
DF	Drafting & Design	33	45	69	72	76	78	9	12	16	3	413	-90.9%	-81.3%
ED	Education	--	--	--	--	9	7	9	--	--	--	25	na	na
EM	Emergency Medical Technology/Paramedic	--	--	--	16	29	15	--	--	--	--	60	na	na
GD	Graphic Design	28	25	67	45	135	122	57	24	--	--	503	na	na
HM	Hospitality	--	7	--	--	--	--	--	6	--	--	13	na	na
IE	Industrial Engineering Technology	10	11	13	9	8	--	--	--	--	--	51	na	na
MA	Precision Machining	40	64	74	56	82	44	38	38	40	48	524	20.0%	20.0%
WL	Welding	6	41	33	59	80	31	64	40	39	28	421	366.7%	-28.2%
Total Course Enrollment in Dual Technical Credit		321	621	897	521	848	583	425	390	319	259	5,184	-19.3%	-18.8%

Source: Colleague Fall Census

Notes:

(1) The increase for Dual Technical Credit enrollment in Fall 2005 was due to a temporary change in the enrollment process

(2) Enrollment figures are duplicated student headcounts

5.6 Percentage Change in Dual Credit Enrollment

